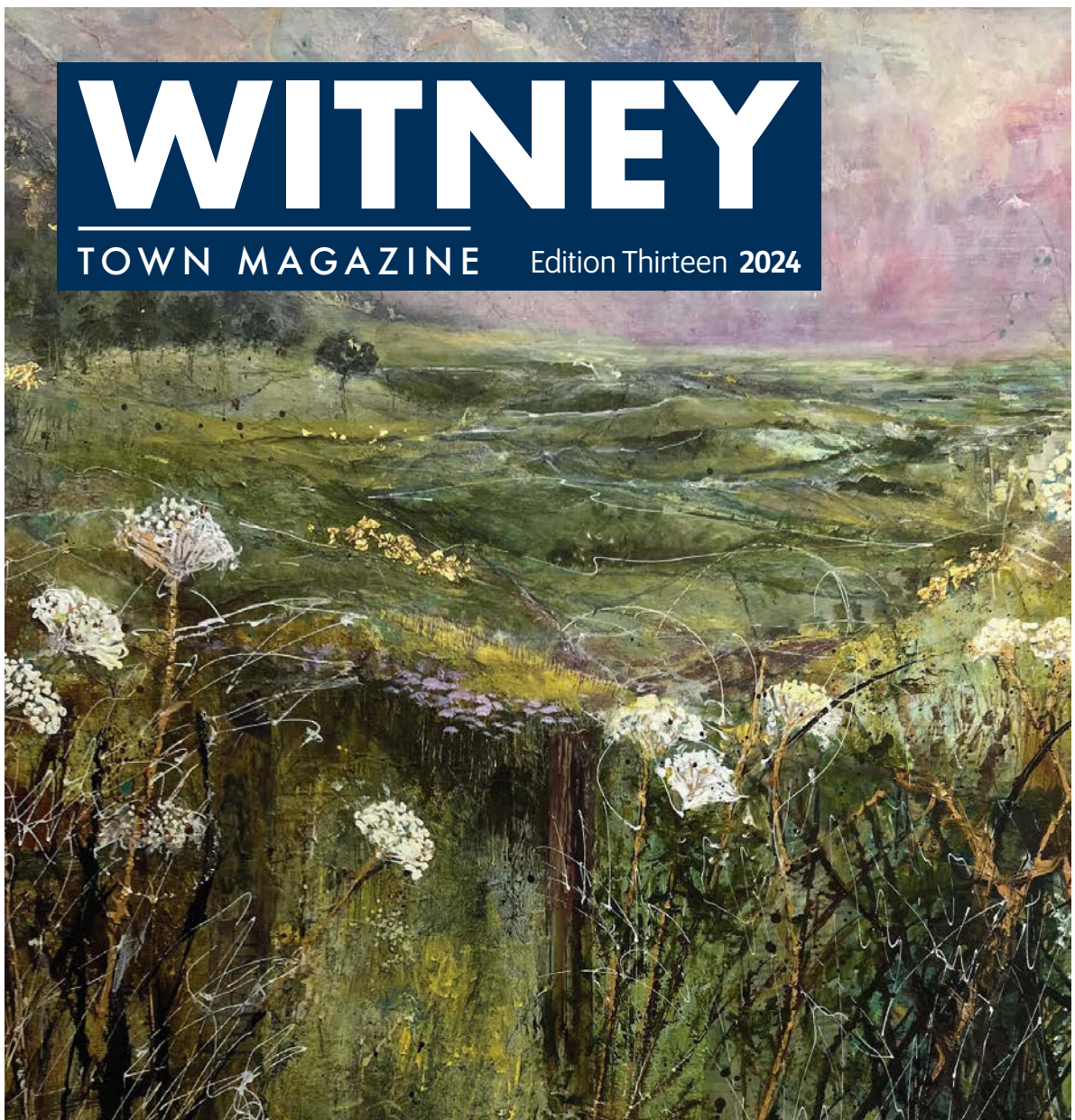


WITNEY

TOWN MAGAZINE

Edition Thirteen 2024



Spring What's On • Local Music • Oxfordshire Artweeks • Community Fundraising

SHOP • EAT • PLAY

The Ever-growing Gallery



This month and next, artists in and around Witney are preparing for Oxfordshire Artweeks later this spring: Artweeks – the UK’s oldest and biggest open studios and pop-up exhibition event – always seems to be the event that signals the arrival of summer sunshine. As the festival begins colour suddenly runs riot across the county, so we were keen to find out what we’ve got to look forward to locally. Here are our suggestions to get you started.



Candy Kerpache

In Witney

Witney Artweeks runs this year from 4-12 May, and you’ll find, for example, stunning showcases of top-quality art in the SOTA Gallery in Langdale Court, whilst Derwent House on Bridge Street is the place to head for hand-crafted furniture and sumptuous textile pieces.

Candida and Dominic Kerpache, two contemporary artists who are new to Artweeks for 2024, are hosting a pop-up exhibition in the Bosworth Suite at Witney Market Square’s Blue Boar. Working together, they draw inspiration from the colours and forms of the natural environment, ranging from a peacock feather to swirling cosmic patterns in space, and everything in between. Using fluid paints to create their entrancing bold abstracts, they harness the power of movement and capture a range of moods and emotions through their explorations of colour, shape, and pattern.

“I’m the dreadlocked half of this creative mother-and-son duo!” grins Dominic. “My childhood obsession with Star Wars and Sci-Fi films sparked my desire and increasing fascination to explore and understand the formation of galaxies, exploding stars, black holes, and all things cosmic. That fascination has grown and developed into a deeper yearning to understand the secrets of the world beyond our planet, and the James Webb telescope images constantly challenge and ignite my artistic imagination. Also, the brilliantly



Dominic
Kerpache

filmed and narrated David Attenborough documentaries never fail to fill me with awe and wonder at the beauty and intricacies of our natural environment.”

“Acrylic pouring has gifted me the opportunity to develop my creativity and passion for the natural environment and beyond,” he continues, “from the delicate winsomeness of a perfectly formed flower, the calming movement and flow of water to the infinitely dynamic chaos and artistry of our cosmos. I love experimenting with new techniques and colour combinations to create atmospheric images, filled with light, movement, and endless possibilities for individual interpretation.”

“As a Reiki Master I also paint canvases designed to promote meditation and well-being based on the beautiful Chakra colours; and at the end of a painting session our bespattered studio floor is a no-go zone for several days! Painty paw-prints are avoided by keeping my whippet, Snoop and my Mum’s inquisitive hound cross, Chantilly, well away!”

Also in town, on Manor Road, Andrew and Kerry Forkner invite you to their house studio-cum-gallery where Andrew’s latest collection shows British wildlife in their natural environments and Kerry’s intriguing fabric creations draw you into the history of the landscape. Click to page 24 to find out more.

Head to Crawley Mill

Just out of town, where a tinkling brook runs through a wooded glade beneath the tall red brick chimney of Crawley Mill, a series of charming artisan spaces are also inviting you in for Artweeks.

Here, meet Meg Harris who uses freehand machine embroidery to create ‘happy textiles’ original stitches as well as printed homewares and stationery with contemporary motifs, her ideas drawn from the home, the garden and sometimes the seaside.

In neighbouring Kingfisher Studios, you’ll find the perennially popular paintings of Jessica Parker who focuses on the essence of the Cotswolds, their stunning natural beauty a rich source of inspiration for her. “I have responded to elements of the landscape such as rolling hills, stone walls, vegetation and flowers, or winding country lanes in my pieces to evoke the charm and tranquillity of the Cotswolds,” she says. “I experiment with different colour palettes to capture the four seasons and the play of light and shadow across the landscape. Acrylic paint offers versatility in its application from translucent washes to opaque layers,” she explains, “while collage adds texture and dimension through the incorporation of various materials. I also use ink to define details and enhance elements of the composition.” Each captivating layered mixed media painting is therefore a dynamic exploration of colour, texture, and depth.



Jessica Parker



Penelope Fulljames

Jessica is joined by a number of other artists, including Penelope Fulljames a wildlife artist with a focus on wilderness and endangered landscapes and MJ Marshall, a budding and unconventional contemporary abstract artist. Her exhibition is a snapshot of the artist's emerging and evolving voice in which each artwork represents a state of mind, and feelings associated with seasons, time, nature, and personal experiences.

"I was driven to paint by the sensory overload from the constant synaesthetic explosion of colours in my head - namely, seeing words and hearing music in colour," she explains. "I'm inspired by many weird and wonderful things - from art, nature, science, space, geometry, architecture, and the richness of different cultures. My ethereal and stark artscapes are an expression of emotional states associated with world experiences and the need to escape."

Alongside, in Kingfisher Studio, Artweeks newcomer Natalia Podpora is showing visually poetic art created with paper – intricate and unique papercut works, as well as ink illustrations – and other pieces. Born in Toruń in Poland, from childhood she was inspired by her surroundings and encouraged by her family to create and use her imagination. Recently she has been experimenting with laser cutting her designs into different mediums such as wood and acrylic, taking her work into a different, more tangible dimensions, exploring the intricate physicality of her designs.

Deeply influenced by films and travel, Natalia enjoys visualising the unspoken and focusing on the wellbeing of the mind in her work. Always looking for the next opportunity to translate life and the beauty within into art, she finds inspiration in unspoken emotions, shadows, Japanese woodblocks, and the small pleasures in life.

Also celebrating small pleasures in life, potter Leigh Hicks creates beautiful and tactile pottery with strong, simple shapes that often have a graphic element, and glazes that enhance this. Every piece is hand thrown in small batches on a wheel using stoneware clay and fired to 1240°C, making them both elegant yet robust for everyday use.



Kath Fotheringham

Take a trip to Wilcote Riding

"If you go down to the woods today, you're in for a big surprise!" Hidden in the woods five miles NW of Witney, you'll find Wilcote Arts, a set of studios where fifteen artists are opening their studios and showing very varied art including original drawings in expressive charcoal by Kath Fotheringham, a graphic designer, artist, and wild swimmer, to simple ceramics for mindful moments by Karen Fern throws with terracotta and stoneware. "The first draws me to the natural landscapes surrounding my woodland studio whereas deep rich ocean blue glazes beautifully echo the hues of the Cornish coast, a favourite escape since childhood, and evoke a feeling of complete calm," she explains.

Here too artist Nimmi Naidoo, a process-led artist, is curating a thought-provoking installation in the 'Drawing Room' of Wilcote Art on 'Soil', the complex organic matter we cannot live without, which gives life and accepts our death. Here four artists, Laura Middleton, Nimmi Naidoo, Karen Purple, and Annabel Ralphs each present work that explores their relationship with soil: Nimmi, for example, has gathered burnt soil from a bonfire in the woods which she is using, along with recently gathered soil, as material for her contribution. There will be the opportunity for visitors to engage in a close examination of soil and, in conversation with the artists, reflect on their own relationship with the earth.



Hugh Pryor

Head over to Eynsham

There are also a number of venues to discover in Eynsham which include an exhibition by Hugh Pryor whose dynamics figurative photography emerged from life drawing and looking at the human figure as a way of investigating the properties of light when used with long exposure photography. This interest in movement emerged from his experience as an animator and looking at what happens between the frames.

“By using fluorescent and reflective materials under carefully crafted lighting, movement becomes like a paintbrush,” he explains.

You can also visit the fascinating studio of friendly potter Alison Holmans who creates quirky pieces including thrown bowls with expressive lips; jugs with fun ‘hand’-les; platters of whole imprinted leaves with decorative coils, and quirky animals and birds brought to life with a flick of an ear or tilt of a head.

Interestingly, Alison has discovered a seam of ‘Roman clay’ nearby which she loves to use.



Alison Holmans

“Dug from the earth, it echoes the past as I clean it and mould it into shape with my hands as people would have done 2,000 years ago. Full of iron oxide, it first turns a rich terracotta-orange in fire and then, under reduction, it turns a deep black. I have discovered that it is ‘stable’ to stoneware temperatures and produces a deep crimson clay – something our forebears may not have achieved with their crude kilns and fire pits,” she explains.



For more on these and hundreds of other venues visit artweeks.org

Artweeks

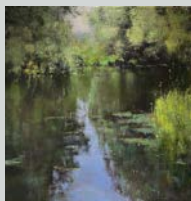
LOCAL VENUES

24 venues within 10km of Witney Market Square

SOTA Gallery (Artweeks listing 100)

Be wowed by the work of over 100 artists and crafters all year round: ceramics, jewellery, painting, printmaking & sculpture.

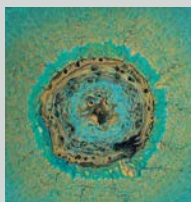
Langdale Court, Witney OX28 6FG
9am-5pm; 4-6-11 May



Candida & Dominic Kerpache (Artweeks listing 99)

Paintings: unique vibrant fluid art creations inspired by our natural world and the universe beyond.

The Blue Boar (Bosworth Suite)
28 Market Square, Witney OX28 6BH
11am-6pm; 6-10 May



Derwent House (Artweeks listing 516)

Showcasing a range of British designer-makers and local artists who handcraft furniture, ceramics, textiles, and homewares.

3 Bridge Street, Witney OX28 1BY
9.30am-5.30pm; 4-27 May
(closed Suns/Mons)



Andrew & Kerry Forkner (Artweeks listing 98)

Wildlife paintings and drawings, hand-dyed, quilted, and embroidered textiles and jewellery.

149 Manor Road, Witney OX28 3UF
11am-6pm; 4-12 May



Meg Harris-Smith (Artweeks listing 92)

Meg uses freehand machine embroidery to create original textile art as well as printed homewares and stationery.

May 1 Design, Unit 18C, Crawley Mill Ind. Est., Dry Lane, Crawley OX29 9TJ
10am-4pm; 4-12 May



Jessica Parker, Penelope Fulljames, MJ Marshall, Natalia Podpora and Leigh Hicks (Artweeks listings 95-99)

Mixed media paintings based on the Cotswold Landscape; oil studies, charcoal drawings & pastels of wild places, wildernesses, trees & water; synaesthetic unconventional abstracts; papercuts & ink illustrations showcasing the beauty of life and growth; and functional and decorative stoneware ceramics, handthrown and individual.

Kingfisher Studios, Unit 30, Crawley Mill Ind. Est., Dry Lane, Crawley OX29 9TJ
10am-4pm; 4-12 May



Julia Ogborne WOA (Artweeks listing 80)

Vibrant and joyful acrylic paintings exhibited in a lovely Cotswold home.

Hawthorn Cottage, Witney Road, Finstock OX7 3DE
11am-5pm; 4-6-10-12 May



Wilcote Arts (Artweeks listing 81)

In a beautiful, wooded setting tucked away near Finstock, see the work of fourteen artists.

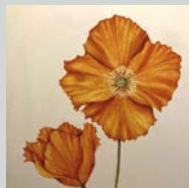
Wilcote Studios, Unit 4, Hunts Copse, Wilcote Riding OX7 3DX
11am-5pm; 4-6-11-12 May



Polly Wyatt (Artweeks listing 125)

Beautiful botanical illustrations in watercolours and pencils.

5 Olivers Close, Long Hanborough OX29 8GL
11am-6pm; 8-10-12 May



Jane & Paul Tomlinson
(Artweeks listing 124)

You'll love Jane's vibrant paintings maps of nature, birds & teacups, & Paul's exquisite drawings of the built environment.

7 Pigeon House Lane,
Freeland OX29 8AG
12pm-5.30pm; 4-5 11-12 May



Alison Berrett (Artweeks listing 115)

Colourful, dramatic paintings and drawings based on the natural landscape and rhythms of nature in a beautiful village-edge location.

2 Newfield Cottages, Eynsham
OX29 4BG
11am-5pm; 4-5 9-12 May



Paul Drew (Artweeks listing 116)

Ceramics and sculpture, making connections - vessels, relics, human forms and references to the natural world.

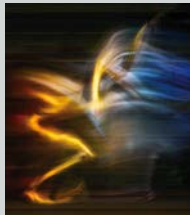
98 Acre End Street,
Eynsham OX29 4PD
11am-6pm; 4-6 11-12 May



Hugh Pryor (Artweeks listing 117)

Exciting experimental photography using dynamic lighting with performance and movement to striking effect.

88 Acre End Street, Eynsham
OX29 4PD
11am-6pm (Sun 2pm-6pm);
4-5 9 11-12 May



Eric White (Artweeks listing 118)

Gorgeous atmospheric landscapes in pastel, ink and paint - a veritable cornucopia of visual delights.

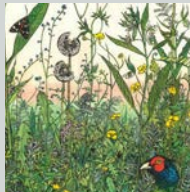
28 Mill Street, Eynsham OX29 4JS
11am-6pm (Sun 12pm-6pm);
4-6 8 10-12 May



Alice Walker and Matt Black
(Artweeks listings 119 & 120)

The peace of wild things: intricate & soulful nature themed artworks combining paint, print & embroidery and paintings and drawings depicting ambiguous territories beyond consciousness.

in Eynsham's newest arts venue.
Mill Street Arts, 66 Mill Street,
Eynsham OX29 4JU
10am-4pm; 4-6 11-12 May



Alison Holmans
(Artweeks listing 121)

Wheel-thrown and hand-built stoneware pottery that is functional, aesthetic, and tactile. Raku made from local clay.

The New House, Tanners Lane,
Eynsham OX29 4HI
10am-6pm (Tue/Wed by appt);
4-6 9-12 May



Philippa Norris
(Artweeks listing 122)

Quirky and practical ceramics in a backwater of ancient Eynsham.

Cotswold House, 9 Queens Lane,
Eynsham OX29 4HL
11am-6pm; 4-6 10-12 May



Lorna Marrison
(Artweeks listing 123)

Paintings of home and landscapes.

16 Hawthorn Road, Eynsham
OX29 4NT
11am-5pm; 4-6 11-12 May



Neville Crowson
(Artweeks listing 114)

Paintings of plain air landscapes, garden scenes, seascapes, still life and church interiors on view in house and garden.

Blomfield House, Cote,
Bampton OX18 2EG
11am-6pm; 4-12 May



West Ox Arts Gallery
(Artweeks listing 107)

Enjoy a stunning showcase of work across the visual arts by fifteen talents artists – includes textiles, glass art and vintage ephemera delightfully upcycled. Runs from 27 April to 1 June (closed Mondays except Bank holidays).

Town Hall, Market Square,
Bampton OX18 2JH
11.30am-4.30pm (Sun 2-4pm); 4-12 May



Tuula Nicholson
(Artweeks listing 108)

Sculpture, Wood. A multitude of contemporary sculptures plus home & garden products made from natural materials, handmade in the Cotswolds.

Wisteria, Church View, Bampton OX18 2NE
11am-5pm; 4-12 May



**David Williams, Sue Side,
Tamzin Keown**
(Artweeks listings 109-111)

Organic tactile stone sculpture for home & garden; atmospheric drawings, etchings & graphite portraits; And jewellery inspired both by the four natural elements and by outside the earth's atmosphere.
The Old Forge, Bampton OX18 2NA
10am-5pm; 4-6 10-12 May



Sue Side

Pip Shuckburgh
(Artweeks listing 112)

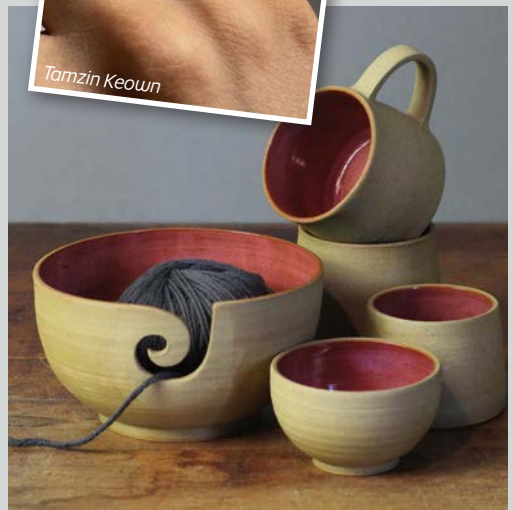
Pip is enjoying commissions & exhibitions throughout 2024. Catch her at her studio during Artweeks!
Fairwood, Cheapside, Bampton OX18 2JL
11am-6pm; 4-5 9-12 May



Tamzin Keown

Mark Fitzgerald
(Artweeks listing 113)

Rustic earthenware pottery: slipware and tin glazed. Open studio with shop window display.
2a Bushey Row, Bampton OX18 2JU
11am-6pm; 4-12 May



Leigh Hicks

**Christopher Townsend,
Glynn Allcock, Nic Vickery &
Guen Palmer**
(Artweeks listing 89-91)

See latest collection of new work from two of Oxfordshire's most dynamic makers in metal and wood as metal is forged in the fire; quirky animal artwork using vintage maps, watercolour, ink, pastel and acrylics; and delicate contemporary jewellery designed and handmade using precious materials with unusual gemstones and pearls.
The Old Forge, Asthall Barrow Farm, Asthall OX18 4HJ
11am-5pm; 4-12 May



Christopher Townsend



For more details on these and other venues or to browse an online art showcase visit artweeks.org