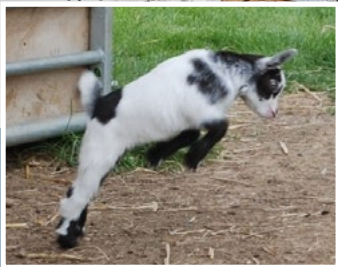


WITNEY

TOWN MAGAZINE

Edition Nine 2023



What's On • Artweeks Guide • Recipes • Sunshine Cat Rescue

SHOP • EAT • PLAY

Artweeks in and around Witney



Oxfordshire Artweeks is the UK's oldest and biggest open studios and pop-up exhibition event, and the 41st festival, which runs from 6-29 May and begins with a coronation, promises to be fit for a king. As the country's creatives open their doors to welcome visitors, for free, there's a wealth of art and intrigue to explore. In the villages around Witney as many as 50 artists, ceramicists, sculptors, jewellers – many of whom are taking part in Artweeks for the first time this year – invite you to explore more than twenty locations during the second week of the festival (13-21 May).

You'll find artists, designers and makers showcasing extraordinary talent, explaining their materials and, often, demonstrating their methods. Touch and talk about thousands of pieces of art and craft and uncover the stories of their inspiration.

The Witney Artweeks trail

Artistic Licence (Artweeks venue 297)

Visit The Corn Exchange for an exhibition of drawing and painting by the Witney art group 'Artistic Licence' which meets on Wednesdays in Witney's Corn Exchange, tutored by Sarah Moncrieff.

**The Corn Exchange,
Market Square
OX28 6AB
13-21 May (11am-5pm)**



A new face for Artweeks 2023: Steven Broughton (Artweeks venue 298)

A witney-based potter making wheel-thrown ceramics opens his studios and invites you in.

**53 Corn Street OX28 6BT
13-14, 20-21 May (11am-5pm)**



Derwent House (Artweeks venue 299)

Derwent House represents a range of top British designer-makers handcrafting furniture, ceramics, textiles and homewares, and local artists too.

**3 Bridge Street OX28 1BY
6-27 May (9.30am-5.30pm,
closed Sun/Bank hols)**



Debbie Howard WOA (Artweeks venue 300)

Mixed media artist and potter producing vibrant and inspirational artworks as well as offering classes and retreats.

**47 Woodgreen OX28 1DE
11-14 (11am-4pm)**



Andrew and Kerry Forkner
(Artweeks venue 301)

This husband-and-wife artist duo open their home studios inviting visitors to see wildlife paintings and drawings; hand-dyed, quilted and embroidered textiles and jewellery.

149 Manor Road OX28 3UF
13-21 May (11am-6pm)



Also, on the edge of town you'll find two artists/makers at Crawley Mill

Jessica Parker and Meg Harris-Smith
(Artweeks venues 295 and 296)

Semi abstract landscape mixed media paintings using collage, ink and acrylic paint and freehand machine embroidery originals and stitched designs printed onto homeware and stationery in two adjacent studios.

Crawley Mill Ind. Est.,
Dry Lane, Crawley OX29 9TJ
13-21 May (10am-5pm; Meg's studio is closed on 13)



To The North

Julia Ogborne
(Artweeks venue 247)

Julia paints vibrant and joyful abstract acrylic landscapes which she will be showing in a delightful Cotswold home gallery alongside polymer clay jewellery.

Hawthorn Cottage,
Witney Road, Finstock OX7 3DE
13-14, 18-21 May (11am-5pm)



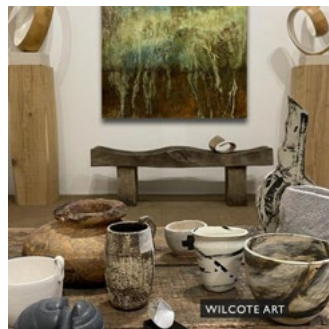
Wilcote Arts
(Artweeks venue 246)

Then head to Wilcote Arts, a large community of artists deep in the ancient Royal Hunting Forest of Wychwood. During the Artweeks festival, 16 artists are showcasing their artworks on a theme of Contemplation in the main exhibition room, and in individual studios. The group includes painters, sculptors, ceramicists, jewellery makers, and installation artists who work as individuals and also collaborate in creating socially engaged works (Artweeks venue 246) so it's a microcosm of Artweeks itself.

Artists and makers include Richard Fox, a sculptor whose work is focused on form and balance. He creates lines in space with impressive tactile curves of wood, each with a symmetry, a seductive delicacy and a smoothness of shape that is perfect for peaceful contemplation. Of the woods he uses, which are all native to the UK, Richard's particular favourite is sycamore. He describes how because it is pale in colour, the grain catches the light in such a way that its appearance changes as the sculpture rotates. The sculptures are designed to be turned by hand because they are each on a 'pin' fixed on the base of the sculpture, giving

these large-scale ribbons of wood an interactive dimension and the fluidity of ever-changing views.

Hunts Copse,
Wilcote Riding OX7 3DX
13-14, 19-21 May (11am-5pm)



Paul and Jane Tomlinson
(Artweeks venue 302)

In Freeland, siblings Paul and Jane present a stunning exhibition of drawing and painting, observation and imagination, colour and calm, light and shade with a range of goodies that includes original works of art, signed prints, cards, tea towels, and jigsaws. Jane's vibrant paintings are of nature, birds, animals, trees, the weather and hand-painted maps and Jane's whimsical imagination produces the most life-affirming, colourful and magical contemporary art around. Alongside, Paul's exquisite characterful drawings, are of carefully observed

townscapes and buildings washed with watercolour. A former engineer, Paul brings thoroughness and precision to his work yet each imbues local charm.

**7 Pigeon House Lane,
Freeland OX29 8AG
13-14 20-21 May (12pm-5.30pm)**



To The East

Eynsham has a vibrant Artweeks trail with 7 village venues, 3 of which are new for this year.

These include the home studio of artist Paul Ellis, also a landscape architect, draws on a love of gardening to create varied artworks in response to the land and his garden. Having previously explored the varied processes of printmaking from lino cuts, dry point, colourgraphs, lithographs, Japanese woodblock and monoprints, often combining processes to achieve unpredictable outcomes, he has

recently focused on collage creating lush multi-layered compositions.

Nearby, ceramicist, sculptor and designer Paul Drew who uses certain forms and familiar shapes that are sometimes primaeva and generate an emotional response.

You'll find Philippa Norris and Sue Doughty in the third new venue. Philippa specialises in slipcast porcelain making both functional vessels and decorative animals with a nod to Staffordshire figurines. Everything is individually finished using a mix of stained slip, oxides and carving to create the finished item.

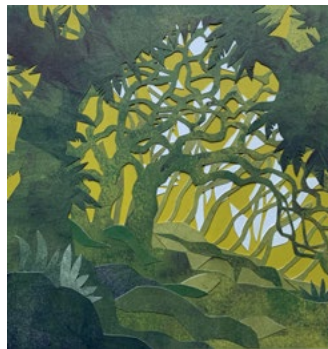
Sue works almost exclusively with sterling silver creating jewellery and spoons using a variety of techniques, particularly forging, texturing and reticulation and she also incorporates semi-precious stones into her pieces.

New for 2023

**Paul Ellis
(Artweeks venue 309)**

Figurative and abstract collage and printmaking inspired by natural forms and landscapes.

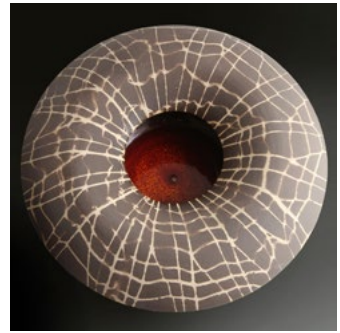
**82 Dovehouse Close,
Eynsham OX29 4EY
13-21 May (11am-6pm)**



**Paul Drew
(Artweeks venue 304)**

Paul Drew's ceramics and sculpture which makes connections - vessels, relics, human forms, and references to the natural world.

**98 Acre End Street,
Eynsham OX29 4PD
13-14 20-21 May (11am-6pm)**



**Philippa Norris | Sue Doughty
(Artweeks venue 306)**

Decorative/functional porcelain ceramics and hand-forged silver jewellery
**Cotswold House,
9 Queens Lane, Eynsham OX29 4HL
13-14 19-21 May (11am-6pm)**



Previously Popular Venues in Eynsham

Eric White's feast of delectably delicious contemporary landscapes in paint, pastel, and inks at the heart of the village.
**28 Mill Street,
Eynsham, OX29 4JS
13-14 18-21 May (11am-6pm;
Sun 12pm-6pm)**



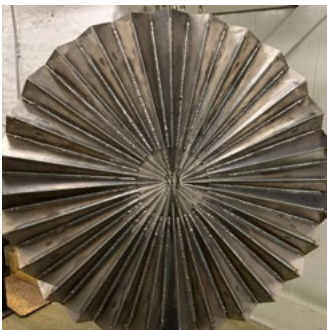
Down Tanner's Lane you'll find sculpture assembled out of recycled and reclaimed metals by **Peter Shrimpton**, an invite to explore wheel-thrown and hand-built stoneware and raku ceramics by **Alison Homans** at Chicken Run Studio and glowing watercolours of plants and local landscapes by **Julia Loken**, exhibited in a neighbouring house and garden

(*Artweeks venues 307 and 308*).

Tanner's Lane, Eynsham OX29 4HJ

Alison/Peter 13-15 18-19 21 May;

Julia 13-14 19-21 May (11am-6pm)



Alison Berrett

(*Artweeks venue 303*)

Find vibrant expressive painting and drawings displayed in Alison's brand new studio on the edge of Eynsham

2 Newfield Cottages,

Eynsham OX29 4BG

13-14 18-19 21 May (11am-5pm)



To The South

At the heart of Bampton's Market Square stands **West Ox Arts Gallery** which is gathering together a new selection of artists for 2023 and art that stunning stained glass inspired by the moon and lunar incantations by Kay Gibbons, a fresh take on still life by Denny Webb and felted bags by Helen MacRitchie. Alongside popular regulars Pip Shuckburgh and Tuula Nicolson, you can also visit Mark Fitzgerald at Sun Pottery

and explore a first-time venue, The Old Forge, where Sue Side's striking graphite portraits and watercolours are shown alongside organic tactile stone sculpture by award-winning David Williams and talented young jeweller Tamzin Keown.

West Ox Arts Gallery

(*Artweeks venue 287*)

Market Square OX18 2JH

6-28 May (11.30am-4.30pm)



Pip Shuckburgh

(*Artweeks venue 288*)

Fairwood, Cheapside OX18 2JL

Open 13-14 18-21 May (11am-6pm)

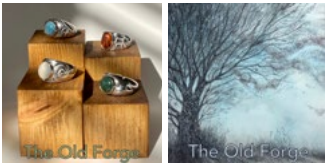


Tamzin Keown, Sue Side and David Williams

(*Artweeks venue 289-291*)

The Old Forge, Church Street OX18 2NA

Open 13-14 19-21 May (10am-5pm)



Neville Crowson
(Artweeks venue 294)

Neville Crowson shows plein air landscapes, garden scenes, seascapes, still life and church interiors

Blomfield House,
Cote nr Bampton OX18 2EG
Open 13-21 May (11am-6pm)



Tuula Nicholson
(Artweeks venue 292)
Wisteria, Church View OX18 2NE
Open 13-21 May, 11am-5pm



Out West

Look out for four artists in an old barn-cum-forge venue just off the A40 near Asthall. This year regulars metal sculptor Chris Townsend, animal artist Nic Vickery and jeweller Guen Palmer are joined by ceramicist Gilly Whittington who throws most of her pots on the wheel, and handbuilding larger vases. Most recently she has been working with porcelain, despite its reputation for being tricky because of the way the brilliant white background gives the glazes an extra élat.

'I have always wanted my pots to have a feeling of spontaneity and movement, despite being static!' she chuckles. 'Inspired by Abstract Expressionist painters, I try to get that wonderful feeling of seemingly disorganised dynamism into each piece, and I love the exuberance of the random brushwork, and the unexpected results when the colours melt and produce a new and unexpected shade. As a contrast I also make contemporary designed mugs, bowls, and tableware in porcelain, with plain bright glazes.'

The Old Forge
(Artweeks venues 278-280)
Asthall Barrow Farm, Asthall OX18 4HJ
13-21 May (11am-5pm)



Elsewhere across the county, explore a five-acre sculpture park in the Cotswolds, take an art trail through the towns of Woodstock, Watlington and Wallingford or visit city studios in the heart of Oxford, including a printmaking workshop in the heart of the Bodleian library. Artweeks also promises a global journey through the eyes of Oxford artists who have been influenced by people and places around the world and the colours, fabrics, and styles of exotic destinations: tour America on a motorbike, go on safari in Tanzania, head to Svalbard or Cuba, and be enchanted by Rajasthan.

Where will you go first?

For more information on these and hundreds of other venues visit artweeks.org





Esther Lafferty Meets: Jane Tomlinson

Created by Oxfordshire Artweeks artist Jane Tomlinson, this colourful map, *Keep on Rockin' in the Free World* – a visual soundtrack of North American rock music – was painted with a mixture of watercolours and inks with added homemade transfers in the spirit of Pop Art and a big dollop of love! Jane chose the title from Neil Young's 1989 anthem and the map itself pays homage to more than 100 bands, artists, songs and cultural icons that reflect the spirit of most genres and styles of rock music: that's 'rock music' in a wide sense as it often has blurred boundaries with other genres, such as funk, blues, pop, folk and punk. Jane's choices include influential, iconic, significant and well-known tracks, and with so many to choose from, inevitably Jane has chosen her favourites. "I've used many ways to represent the music I love: logos, portraits, album covers, elements from a band's iconography, lyrics, and cultural references," she explains.

Laughingly described as Disk 1 by Jane, Canada sits at the top of the map, and you'll spot Bryan Adams' black and white figure as seen the cover of his album *Waking up*



the Neighbours in the place where you'd find Vancouver. It's the city in which, although it's a long time since he called it home, he settled as a teenager. The baby from the album cover of Nirvana's *Nevermind* swims off the coast and at his feet Jane has placed the logo from the Heart's album, *Dreamboat Annie*, the album made in Vancouver which made them famous. Alongside, Joni Mitchell's face from the cover of the *Blue* album and a lyric from her song *Woodstock* represents the influence of American folk music on rock.

On the far side, Alanis Morissette peers from the picture, a striking red as seen on the album cover of *Under Rug Swept*, with – below the lettering of 1969 Woodstock “to remember the US festival of all festivals, which was not held at Woodstock in Oxfordshire,” laughs Jane, “something my mum, Janet often had to explain as a guide at Blenheim Palace.”



“Look out too for the iconic Starman emblem, which first appeared on Rush’s 1976 classic, *2112*, and has appeared on countless Rush releases since, next to (in *Lake Huron*) a reference to the incredibly sad early death of their incredible drummer and wonderful lyricist Neil Peart. He was a favourite of mine,” explains Jane.

As well as an attractive piece of art for any wall, the map is rather a riddle, and Jane hopes that music fans will enjoy working out who’s who and what’s what from some of more of the obscure references. “It would have been too easy – and actually not very interesting – to paint logo after logo,” explains Jane, “so I decided to make it more participative. Some tracks are obvious but for others, viewers will have to spot and work out what’s represented. Where possible, I have placed subjects somewhere relevant. However, there are so many artists and bands with connections to cities such as New York and Los Angeles, that it has been impossible to be 100% faithful to geographical origins so I’ve had to exercise significant artistic license.”



On the West coast you’ll spot Monterey 1967 (International Pop Festival) – often regarded as one of the first events of the Summer of Love and filmed as *Monterey Pop*. The festival featured the first widely witnessed US appearances of Jimi Hendrix, The Who, Janis Joplin, Otis Redding and many others; kickstarting many careers. Jimi Hendrix himself can be spotted further north.

“Look out too for Love,” says Jane, “possibly the first ever logo in rock? Fronted by primary songwriter Arthur Lee, they were one of the first multi-racial American rock bands. Their third album, *Forever Changes* is surely undeniably one of the classics of the sixties.”

Jane has also included the neon sign from the cover of the Eagles’ *Hotel California* album, and the Beach Boys’ *Good Vibrations* appears in the Pacific Ocean with a surfer, and the picture of *LA Woman* by The Doors, one of Jane’s favourite albums by one of her favourite bands.

In the top centre of the map, *Songs in Key of Life* marks Stevie Wonder’s contribution to the rock world and was the first album Jane ever bought with her own money at Tower Records, Sacramento in September 1977.

“You’ll also spot Prince’s ‘Love Symbol’,” continues Jane, “Elvis, of course, and the faces of The Jackson 5 (from their TV cartoon series), Simon and Garfunkel (as seen on the cover of *Bridge over Troubled Water*), and Buddy Holly, one of the first stars of rock and roll, sadly also represented by the date Feb 3 1959. In Don McLean’s *American Pie* “The Day the Music Died” was when Buddy was killed in a plane crash along with fellow stars Ritchie Valens and ‘the Big Bopper’ JP Richardson, as well as the pilot, Roger Peterson.”

“It has been fascinating to dig down into the meaning of some of the songs on the map,” she continues. “Atlantic Records record label logo appears in the Atlantic Ocean which was an obvious spot, but you’ll also see a whale, “the mighty sperm whale” from Mountain’s classic song *Nantucket Sleighride* (to Owen Coffin). It’s been harpooned and is pulling a whaling boat along (which was known as a *Nantucket Sleighride*). The song is about the bravery and loneliness of whale-hunters before the world acknowledged just how brutal and inhumane that industry was. (Owen Coffin was a young seaman on the whaling ship *Essex*, who was shot and eaten by his shipmates after the ship was rammed and wrecked by a sperm whale in 1820.)”



Beneath, the ‘hook-and-cross’ is a logo that appears on every Blue Öyster Cult album: in Greek mythology the hook-and-cross apparently symbolises Kronos (Cronus), king of the Titans, father of Zeus, and grandfather of Hercules. Its inclusion seems eminently appropriate given this labour of love has been, for Jane - both a Herculean effort and a heavenly end-result for all rock music lovers.

North American Rock Music Map – *Keep on Rockin’* in the *Free World* is available as an A2 signed print for £40, a 1000-piece jigsaw for £32, and as a tea towel and cards via janetomlinson.com