

1–23 May 2021

OXFORDSHIRE

art

WEEKS

art

www.artweeks.org

Festival guide & artist directory

250 venues
to visit

500 virtual
exhibitions

Sunningwell School of Art

Inclusive and Welcoming - Classes for All
mornings, afternoons and evenings

Open Saturday 1st May 12.30pm-6pm
Sunday 2nd May 12noon-6pm
Monday 3rd May 12noon-5pm



Drawing : Kate Tibbetts

The Old School Sunningwell nr Abingdon OX13 6RD
sunningwell@artschool.org.uk 01865 730442 www.artschool.org.uk

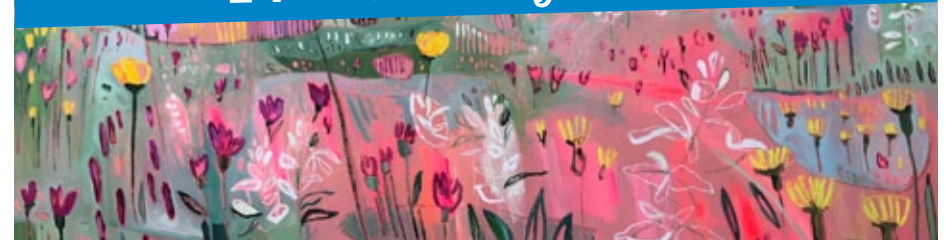
 The North Wall
Arts Centre



Re-Fresh

Paintings by Elaine Kazimierzczuk

17 - 25 May 2021



The North Wall, South Parade, Oxford OX2 7JN



ST. EDWARD'S
OXFORD

St Edward's School is the principal sponsor of The North Wall's innovative public programme of theatre, music, art exhibitions, dance and talks.

Artweeks is a not-for-profit organisation and relies upon the generous support of many people to whom we're most grateful as we bring this celebration of the visual arts to you. These include:

Patrons: Will Gompertz, Mark Haddon, Janina Ramirez

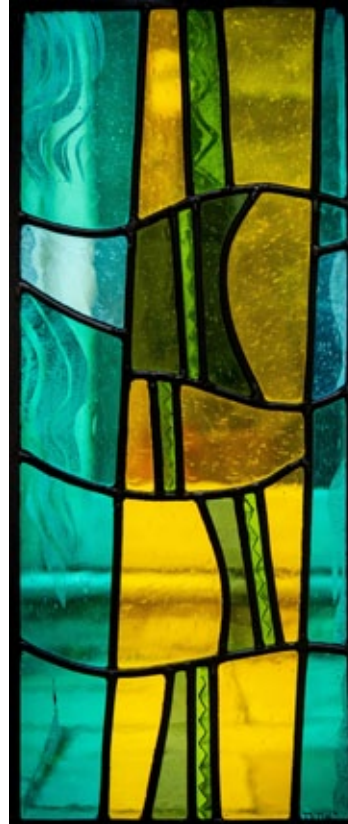
Board members: Emmett Casley, Anna Dillon, Caroline Harben, Kate Hipkiss, Wendy Newhofer (Chair), Sue Side, Jane Strother and Robin Wilson.

We thank our volunteer area coordinators: Wendy Clifford, Philip Dove, Rachel Ducker, Pam Fyvie, Charlotte Houlihan, Jo Lilywhite, Rahima Kenner, Jaine McCormack, Susan Moxley, Melissa Orrom-Swan, Graham Perryman, Yvette Phillips, Francesca Shakespeare, Jill Smith, Dougie Simpson, Pip Stacey, Jane Tomlinson, & Helen White.

Thank you, also, to all the other people and organisations who have helped make Artweeks a success over the years including Janet Brown, Abi Brown, Jill Colchester, David Cotterell, Designers Guild, Jill Rayner, Alun Ward, Appleton Christmas Barn, Cornerstone Arts Centre, Experience Oxfordshire, Eye Division, OX magazine, Ox in a Box, Oxfordshire Library Service, The Jam Factory, The Mill Banbury, The North Wall, The Oxford Times, The Oxfordshire Museum, former board members, all the Artweeks artists themselves and the thousands of members of the public who make the festival so special.



Our cover this year is a scene by Francesca Shakespeare who is exhibiting from her Summertown home (listing 135). Francesca paints outdoors all year round, both in Oxford and further afield. Her fluid plein air landscapes catch the dynamism of fleeting clouds, the changes of the seasons and the underlying rhythms of the countryside.



Di Gold, listing 29

To participate in
Artweeks 2022
(7–30 May)
please register by
31 December 2021.

For details on taking
part, visit
www.artweeks.org

Oxfordshire Artweeks 2021

Welcome to the 39th Oxfordshire Artweeks festival! Last year COVID-19 forced our venues to close and we took the festival on-line: it was a great success and so this year you can visit venues across Oxfordshire and enjoy a virtual festival too.

Within these pages you will find a variety of types of exhibitions: some artists team up to host group shows while others open their studios (look for the OS throughout this guide) and welcome you in to both see their work and to chat about their materials and methods. Each exhibition has committed to be COVID-secure and some are operating by appointment only to help keep you safe. You will see this marked in these venues' details.

Because government regulations concerning coronavirus can change rapidly, updates to venues arrangements and opening hours will be amended in real-time on our website. We strongly recommend that you check with every venue or book an appointment before travelling.

If you are unable to get to any studio or exhibitions for real, or you simply appreciate seeing art from the comfort of your own home, there are also hundreds of virtual studios and exhibitions on our website: a small selection are listed in the fourth section of this artist directory to whet your appetite.

The virtual festival, a dynamic art showcase, includes more than twenty themed art trails to help you navigate through a wealth of video tours, mini-galleries and live-streamed events. You can, for example, take a trip to the coast, marvel at the animal kingdom, venture into the woods, or adventure abroad. Alternatively, search for individual artists or browse by artform, from painting and ceramics to sculpture and installations.

You'll also find the very latest pieces by Artweeks artists on social media – follow us on Facebook, Instagram and/or Twitter and search #OxfordshireArtweeks every day to see what's new all year round.

We hope you enjoy exploring the treasures that Artweeks has to offer and thank you for supporting Oxfordshire Artweeks artists in these challenging times.

Esther Lafferty Festival Director
Jo Salmon Administrator

Oxfordshire Artweeks, 8 Hazel Road, Oxford OX2 9LF
01865 865596
artweeks@artweeks.org

[f /OxfordshireArtweeks](https://www.facebook.com/OxfordshireArtweeks)
[i /OxfordshireArtweeks](https://www.instagram.com/OxfordshireArtweeks)
[t /OxonArtweeks](https://www.twitter.com/OxonArtweeks)



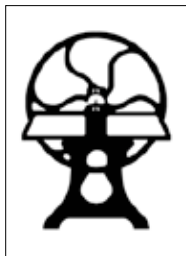
The Oxford Art Society was founded in 1891 and is an umbrella for accomplished artists with diverse and exciting styles living in Oxfordshire, many of whom also exhibit nationally or internationally. We hold regular exhibitions, and welcome submissions towards membership at our annual Open Exhibition. Look for the initials **OAS** in this guide to find members' work. For more information visit www.oxfordartsociety.co.uk



The Oxfordshire Craft Guild draws together designer-makers representing a wide range of traditional and contemporary crafts, and holds temporary and permanent exhibitions throughout the county. Membership, which is by selection, is a sign of the finest design ability and highest quality craftsmanship. Look out for the initials **OCG** in this guide to find Guild Members' work. For further information go to www.ocg.co.uk or www.facebook.com/oxfordshirecraftguild.



West Ox Arts is a lively association of artists and art enthusiasts, many of whom take part in exhibitions alongside artists invited from across the UK. Our Gallery is an inspiring, light-filled venue that sells a wide range of contemporary, high quality art and offers various workshops, demonstrations and special events throughout the year. We are situated in the first floor of Bampton's Town Hall in the Market Square. For more information or to become a member of **WOA** visit www.westoxarts.com. You can also find us on facebook at www.facebook.com/westoxarts



Oxford Printmakers Co-operative (OPC) has been running for over 40 years and is an open access Fine Art Print workshop offering a high standard of printmaking facilities. It currently has 100 members many of whom are professional artists exhibiting in the UK and abroad. As well as holding regular exhibitions, OPC runs courses in many of the print processes: such as linocut & woodcut, wood engraving, etching, monoprinting, screenprinting, collagraphy and stone lithography. These courses are open to anyone with an interest in printmaking. OPC also offers different membership options for accessing workshop facilities and equipment, and new members are always welcome. Look for the initials **OPC** in this guide to find members work. For more information go to: www.oxfordprintmakers.co.uk



The Oxford Etsy Team is a collective of local Etsy sellers in and around Oxfordshire. Etsy is a global marketplace for selling handmade goods & vintage items.

Key to abbreviations

Wheelchair access	W
Open Studio	OS
Demonstrations	D
Refreshments	R
Teacher	T
Parking	P

Oxford Art Society **OAS**

Oxfordshire Craft Guild **OCG**

Oxford Etsy Team **OET**

Oxford Printmakers Co-op **OPC**

West Oxfordshire Arts **WOA**



Chloe Romanos 99 & 162

Artweeks Mary Moser Award Winner 2020 9

North Oxfordshire: Sat 1 – Sun 9 May	15
Banbury & villages	16
Chipping Norton & villages	17
Charlbury	19
Burford & Bampton	21
Witney & Eynsham	24
Kidlington & Woodstock	25
Bicester & villages	26

Oxford City: Sat 8 – Sun 16 May	27
Botley and West Oxford	28
Oxford city centre	29
East & South Oxford	30
Iffley & Cowley	32
Headington to Marston	34
Jericho	36
Summertown	39
Wolvercote & Wytham	41

South Oxfordshire: Sat 15 - Sun 23 May	45
Faringdon to Wantage	46
Abingdon & villages	47
The Wittenhams to Didcot	49
Wallingford & Henley	52
Watlington	54
Thame to Wheatley & villages	62

Virtual exhibitions/directory of other artists	65
Take part in 2022	71
Index of artists	72
Index of galleries and large group exhibitions	76

Although the majority of venues in each Artweeks area open only during their regional dates, you'll find some artists exhibiting for a longer period of time. Browse the listings to take advantage of these additional days or use our search facility at artweeks.org/festival/search

The virtual festival is available to visit 24 hours a day from 1-23rd May.

Make and Mend Display

Venue: Ashmolean Museum

Dates: May - July 2021

Timing: During opening hours,
see www.ashmolean.org

Cost: Free entry

Branch Up, a youth activity group run by the charity Oxford Hub, have created a display of artwork inspired by the Japanese tradition of Kintsugi, which celebrates the repair of broken ceramics by highlighting the breaks in gold. The project, led by artist Francesca Shakespeare, and inspired by the Ashmolean Museum's Japanese collections, involved the breaking, decorating and mending of plates. The children's plates will be displayed outside the Learning Studio.

(open subject to Covid-19 restrictions).



From top, clockwise: Nicola Kantorowicz, Gill Heaton; Karen Joy, Nicola Durrant, Alison Bell, Paul Minter, Jane Peart.

Art Scholarships Available



Independent education for boys from 4-18 years

Abingdon School: admissions@abingdon.org.uk

Abingdon Prep: admissions.manager@abingdonprep.org.uk

abingdon.org.uk

Free and subsidised places available through bursaries.



ABINGDON

The Mary Moser Award

This annual Artweeks award was established to honour Mary Moser's commitment to Artweeks and to further the career of a professional artist who has taken up art as a second career later in life.

Previous winners include:

Caroline Chappell, listing 277, virtual exhibition.

Jane Duff, venue 202, Ewelme.

Elaine Kazimierczuk, venue 139, Summertown, Oxford

Caroline Meynell, listing 288, virtual exhibition.

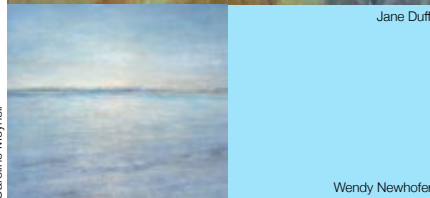
Wendy Newhofer, venue 128, Jericho, Oxford

Claire Christie Sadler, listing 296, virtual exhibition.

Caroline Chappell



Jane Duff



Caroline Meynell



Wendy Newhofer

Claire Christie Sadler



Elaine Kazimierczuk

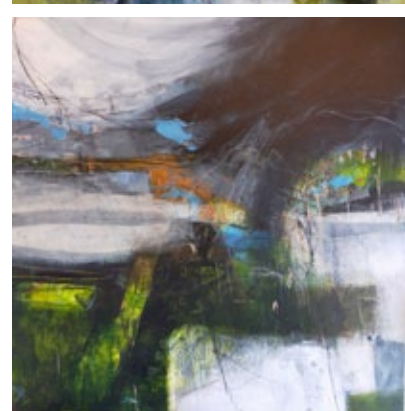
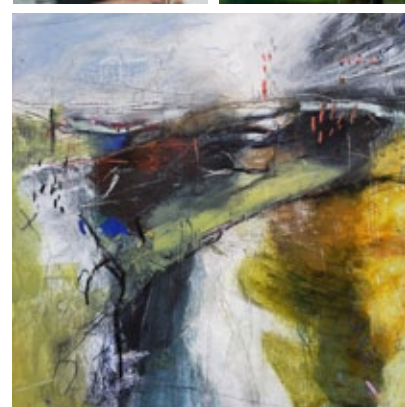
Introducing Rachel Cronin

Congratulations to Hook Norton artist Rachel Cronin, the winner of the 2021 Artweeks Mary Moser Award. Rachel worked first in retail as a bookseller and then in administration and adult education before taking the plunge into art full time.

"When I was small, I always wanted to be an artist (apart from the summer I wanted to be Alexis Colby in Dynasty), and in every picture of me as a child, I am holding a paintbrush," Rachel smiles.

"I've always been drawn to landscapes, seeking out forms, patterns and colours. It's the countryside that inspires me most and I love the rolling land of North Oxfordshire, woods and trees, and lesser-known spots. I love picking out the man-made elements like gateposts and fences and evidence of ancient ways of life."

"Although I always have a sketchbook as a starting point for each painting, it's purely a place to begin. I'll start, perhaps, with the shape of the land, the lines of a ploughed field, the S of a winding path or a solitary tree and, together with the colours I see, create a composition that is not drawn directly from the landscape but is about it. I hope to offer the viewer an experience rather than a literal representation of a scene or vista, and I like my paintings to be a little non-conformist, possibly even a bit jarring or uncomfortable: that adds a depth and an intrigue."



You can see Rachel's paintings at venue 5 in Banbury where she is exhibiting with Jane Griffiths who makes bold sterling silver jewellery incorporating sea-glass, found objects and semi-precious stones.

You can also see Rachel's virtual Artweeks show at www.artweeks.org.



First Exhibition of Student Work

Opportunities to learn ceramics skills in an attractive setting
with experienced professional tuition in a welcoming environment

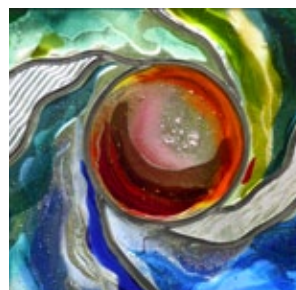


Drew School of Ceramics, The Calf Pens, Friars Court, Clanfield, OX18 2SU

Instagram: @drewschoolofceramics

drewschoolofceramics@gmail.com

07760 114979



vital peeters

glass

stone

bronze

drawings

garden & studio

@

538, banbury road, Oxford

8-16 may 2-6pm

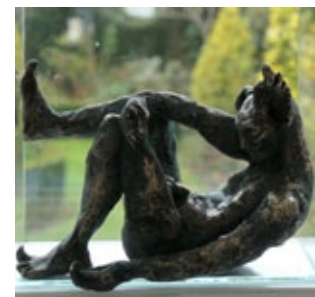
by appointment

01865 512761

www.vitalpeeters.co.uk

facebook: vital peeters

Instagram: vitalpeetersglassandstone



Six exhibitions of
contemporary art a year

Sewell Centre Gallery
Radley College
OX14 2HR

SCG

www.radley.org.uk/sewell-centre-gallery



Alyssa Dabbs

Courtesy of Zuleika Gallery

NEW
HINKSEY
ARTS

NEW HINKSEY ARTS

Community of established and new artists showing in a reclaimed water pumping station at the southern end of Hinksey Park

venue 91

New Hinksey Arts has changing displays of work for sale throughout the year.

Including:

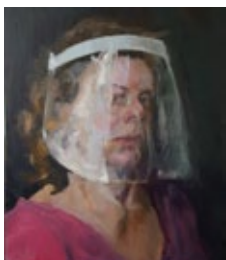
- **Artweeks — 8, 9, 14, 15, 16 May 12-5pm late night 14 May to 9pm**

Virtual gallery available via https://www.youtube.com/channel/UCKJZbrPDeM-TAuCA_R-n50g
Also

- **Art workshops occurring monthly in;**

Life Drawing — Watercolour pencil — and sketchbooks, contact office for more details
Find us in the South Oxford Community Centre, Lake Street off the Abingdon Road, OX1 4RP
Office open weekdays 10-1pm All exhibitions are available to view at other times subject to availability 01865 242666 or enquiries@southoxford.org

www.southoxford.org



OXFORD FESTIVAL of the ARTS

#OFAvirtual



As part of this year's Oxford Festival of the Arts you can enjoy short films about their work from Glass Artist Vital Peeters, Mosaicist Becky Paton, Landscape Artist Elaine Kazimierczuk and Stone Carver & Sculptor Piotr Gargas.

Visit artsfestivaloxford.org for more details

Art in Action Gallery

SHOWCASING THE UNIQUE

See www.waterperrygardens.co.uk for opening hours



■ Ceramics ■ Glass ■ Jewellery ■ Paintings ■ Prints ■ Sculpture

www.waterperrygardens.co.uk | 01844 339254 ext 4 | gallery@waterperrygardens.co.uk





Explore your creativity with small group workshops in painting & drawing with professional artist & experienced, qualified teacher, Kieran Stiles

kieran@artcoursesoxford.com
www.artcoursesoxford.com

159 Jacquie Nicholas
Painting, Sculpture



Innovative imaginative work from recycled finds & papier maché; watercolour and mixed media paintings.
11am-6pm
4 Wearn Road
Faringdon
SN7 7GF
01367 240684
jacreations@icloud.com
W | O | S | D | P
15 16 17 18 19 20 21 22 23

visit our website for opening details www.abingdon.gov.uk/partners/abingdon-county-hall-museum

HapticArt

HapticArt textile and mixed media artists have taken inspiration from artefacts in the Museum for...

'Abingdon Treasures'

... bringing a new perspective to how we view these fascinating objects.

3rd April to 27th June 2021

[f](https://www.facebook.com/abingdonmuseum) [i](https://www.instagram.com/abingdonmuseum) [p](https://www.pinterest.com/abingdonmuseum)
@abingdonmuseum

Abingdon Museum
County Hall
Abingdon Town Council

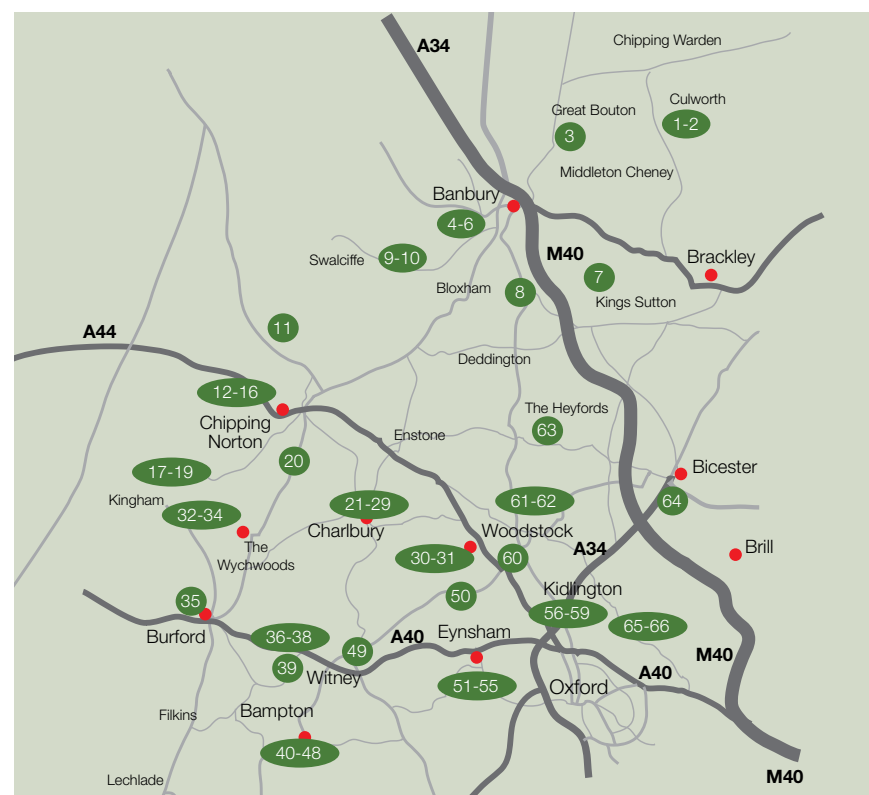


CHROMAtch
Digital Imaging
Lower Barn, 4 Blenheim Road, Horspath, OX3 1RY
Tel: 01865 874846
www.chromatech.uk.com

Top Quality Giclée Prints from your artworks and photographs

Chromatech is open on Tuesdays and Fridays
By appointment only
Hours: 10:00 - 13:00 & 14:00 - 17:30

- Digital image capture
- Prints up to A1 (61 x 84cm, 24 x 33in)
- Best quality archival art paper, canvas & inks
- Certified 75 year fade resistance
- Perfect for short and limited edition print runs
- Make prints on demand as you need them
- Exhibition quality printing
- Short run high quality greetings cards
- Very accurate colour match
- Over 40yrs colour printing experience
- Details at www.chromatech.uk.com



North Oxfordshire Map

This map is to provide approximate guidance only. Please use the venue addresses provided with a road map or SatNav to locate specific exhibitions.

Additional Information

Visit the Artweeks website to see, for many exhibitors, further details, artist biographies, additional pictures of artists' work and to check for any changes and updates.

Local Area Trails

Some groups of artists, coordinated by local volunteer organisers, have put together more detailed trail maps to help you navigate from venue to venue. Many of these can be downloaded at www.artweeks.org

All venues have committed to be COVID-secure. As regulations change, please check on-line for updates to each venue's arrangements before travelling. You might also wish to book an appointment at some venues. Also, visit our virtual festival from 1st-23rd at www.artweeks.org

1 Ann Crawford

Mixed Media, Printmaking



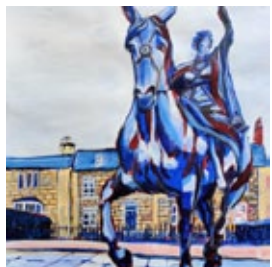
Birds and animals: living things in circus and mythology.
2pm-6pm
Wheatshaf House
The Green
Culworth
OX17 2BB
01295 768818

OS | P

1 2 3 4 5 6 7 8 9

4 The Mill Arts Centre

Various



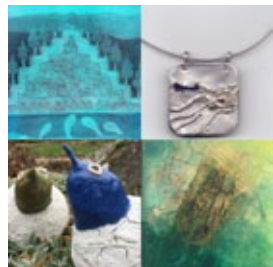
An exciting eclectic mix of local art, craft-ware & gifts by Banbury Artists' Co-operative from Church Lane Gallery.
10am-4pm
The Mill Arts Centre
Spiceball Park Road
Banbury OX16 5QE
themillartscentre.co.uk

W | R | P | T (& 10-15 17-22 May)

1 2 3 4 5 6 7 8 9

2 Liz Dixon | Lizzie Coulter

Various



Two artists, inspired by nature, repurpose many different materials in new & exciting ways.
10.30am-4pm (Sun 10.30-3pm)
Culworth Forge Coffee
Culworth High Street, Culworth
OX17 2AZ. 01295 768356
forgecoffee.co.uk/culworth
W | D | R

1 2 3 4 5 6 7 8 9

5 Rachel Cronin

Painting



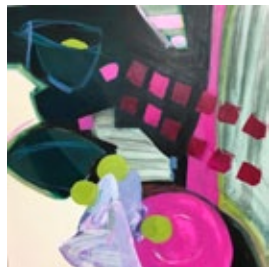
Evocative abstract landscapes painted by award winning artist Rachel Cronin. Exhibiting with Jane Griffiths (jewellery).
12pm-5pm
32 Bath Road
Banbury OX16 0TP
07966 082130
www.rachelcroninartist.com
[/rachellannecronin](https://www.instagram.com/rachellannecronin)

OS | D | P | T

1 2 3 4 5 6 7 8 9

3 Jenny Eadon

Painting

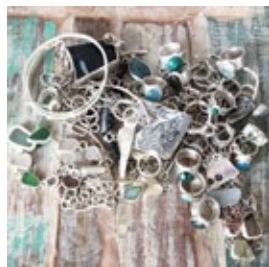


A warm welcome to an exhibition of oils, acrylics, watercolours and drawings in a studio in a lovely garden setting.
11am-6pm
Church Close House
Church Close, Great Bourton
OX17 1RW. 01295 758658
www.jennyeaddon.co.uk
W | OS | R | P

1 2 3 4 5 6 7 8 9

6 Jane Griffiths

Jewellery



Bold sterling silver jewellery incorporating sea-glass, found objects and semi-precious stones. Exhibiting with Rachel Cronin (painting).
12pm-5pm
32 Bath Road
Banbury OX16 0TP
www.poetandcat.design
[/poet.and.cat](https://www.instagram.com/poet.and.cat)

1 2 3 4 5 6 7 8 9

7 Margot Bell OPC

Printmaking



Various woodcuts, drawings & abstract designs in watercolour in garden studio. 100 yards SW from the church! 11am-4pm
Bell House, 5 The Square
King's Sutton, nr Banbury
OX17 3RQ. 01295 811166
margot.bell@mypostoffice.co.uk
OS | R | P

1 2 3 4 5 6 7 8 9

10 The Museum of Modern Art in Sibford

Various



Seven talented individuals exhibiting together in the first ever show at The Museum of Modern Art, Sibford.
11am-5pm
Shrubbery Cottage, Small House Lane, Sibford Ferris OX15 5RG
07972 263331
www.durrant-artwork.com
[/nicola_durrant_art](https://www.instagram.com/nicola_durrant_art)

W | OS | P

1 2 3 4 5 6 7 8 9

8 John Collier

Drawing, Painting

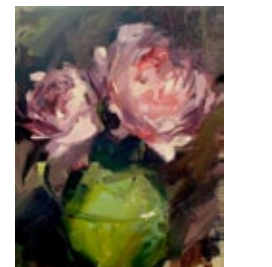


Contemporary drawings in pen/pastels/charcoal/ watercolour & oil paintings on board or canvas.
11am-6pm
Beehive Cottage, High Street
Adderbury OX17 3LS
01295 811544
www.johnscollier.com
[/johnscollier](https://www.instagram.com/johnscollier)
OS | P

1 2 3 4 5 6 7 8 9

11 Nigel Fletcher | Madoc

Painting



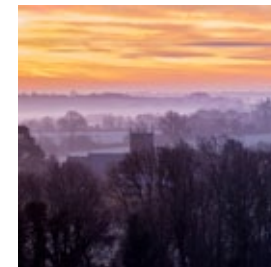
An exciting celebration of colour and energy!
11am-5pm
Swaciffe Village Hall
Green Lane
Swaciffe
OX15 5EQ
www.madoc-art.co.uk
[/nigelfletcherpaintings](https://www.instagram.com/nigelfletcherpaintings)

W | D | R | P

1 2 3 4 5 6 7 8 9

9 Cliff Kinch

Photography



Covered outdoor area with local landscape and wildlife photography.
11am-6pm
Old Well House
Main Road
Milcombe OX15 4RR
07768 724724
cliffkinchphotography.co.uk
[/cliffkinchphotography](https://www.instagram.com/cliffkinchphotography)

1 2 3 4 5 6 7 8 9

12 OCG and Friends

Various



An exciting collection of quality work from some of Oxfordshire's finest makers; from ceramics & jewellery to textiles, glass & painting.
11am-5pm
The Town Hall, Chipping Norton
OX7 4AF. 01608 641295
judithgussin@talktalk.net
www.ocg.co.uk

W | P

1 2 3 4 5 6 7 8 9

13 CN Arts and Chipping Norton Theatre

Various



An outdoor walking trail around Chipping Norton, featuring the work of local artists and members of CNArts group. Daylight hours until 23rd May.

The Theatre, 2 Spring Street
Chipping Norton OX7 5NL
01608 642350

www.cnarts.org
chippingnortontheatre.com

1 2 3 4 5 6 7 8 9

16 Carol Harvey

Mixed Media



Carol Harvey's mixed media art captures nature with her natural inks. 11am-6pm

Bliss View Cottage
Worcester Road
Chipping Norton OX7 5XS
07795 515415

carolharvey.artitude@gmail.com

[/carolharvey.artitude](https://www.instagram.com/carolharvey.artitude)
W|OS|D|R|P|T

1 2 3 4 5 6 7 8 9

14 Judith Yarrow OAS

Painting



New: walks book & atmospheric paintings, cards, allotments project. Exhibiting with jeweller Rosie Colvin.

11am-6pm (Fri 11-8pm)
8 Cross Leys, Chipping Norton
OX7 5HG
07969 039204

www.judithyarrow.com
[/judithyarrowartist](https://www.instagram.com/judithyarrowartist)

OS|R|P

1 2 3 4 5 6 7 8 9

17 Eleanor Campbell

Mixed Media



Mixed media affordable art on canvas and paper.

11am-5pm
Canterbury, West Street
Kingham
nr Chipping Norton
OX7 6YQ
07964 040617

www.eleanorcampbell.art

[/eleanor_campbell_art](https://www.instagram.com/eleanor_campbell_art)
OS

1 2 3 4 5 6 7 8 9

15 Rosemary Atkins

Painting, Printmaking



Show entitled 'Wood and Stone'. Linocuts and paintings, all expressing texture and form. Part of 'West End Studios'.

11am-6pm
4 Alfred Terrace, West End
Chipping Norton OX7 5HB
01608 643471

www.rosemaryatkins.co.uk
OS|P

1 2 3 4 5 6 7 8 9

18 Jackie Stapleton

Jewellery



Various jewellery styles. However, wire weaving is something Jackie particularly loves.

11am-6pm
46 West End, Kingham nr
Chipping Norton. OX7 6YL
07879 048528

jackiestapleton@btinternet.com

OS|P

1 2 3 4 5 6 7 8 9

19 Sculpture at Kingham Lodge

Various



Over 400 sculptures across 5 acres of beautiful garden. Prices start at £10 so something for everyone!

10am-5pm
Kingham Lodge, West End
Kingham OX7 6YL. 01608 658226
sculptureatkinghamlodge.com
[/sculpture_at_kingham_lodge](https://www.instagram.com/sculpture_at_kingham_lodge)

W|D|R|P

1 2 3 4 5 6 7 8 9

22 Sarah Pulvertaft

Jewellery



Visit the Oxfordshire workshop where Sarah makes her kinetic jewellery.

11am-6pm
The Workshop
Ranger's Lodge
Charlbury OX7 3HL
07914 582688

www.sarahpulvertaft.com
[/sarahpulvertaft](https://www.instagram.com/sarahpulvertaft)

OS|P

1 2 3 4 5 6 7 8 9

20 Jill Colchester OAS

Drawing



'Barely There': drawn with dynamic, minimal line, Jill's figures have a strong presence.

2pm-5pm
Knollbury
West End (next to delicatessen)
Chadlington. OX7 3NJ
07974 814615

www.jillcolchester.com
[/jillcolchesterstudio](https://www.instagram.com/jillcolchesterstudio)

1 2 3 4 5 6 7 8 9

23 Catherine Binnie

Painting, Sculpture



Railway studios: stone sculpture, painting, drawing, prints and cards. Details of stone carving workshops.

11am-6pm
Railway Studios, Forest Road
Charlbury OX7 3HH
07450 313032

catherinebinnieartist.com
[/binniecathy](https://www.instagram.com/binniecathy)

W|OS|D|R|P|T

1 2 3 4 5 6 7 8 9

21 CouCou Curates

Paper



Home Books: artists books made in lockdown reflecting on self-confinement & isolation by Clare Carswell, Rhiannon Evans, Peta Lloyd & Annie Rapstoff. 11am-6pm

Overlay Studio, Spelsbury Road
Charlbury OX7 3LL
01608 811997

www.coucuration.com
W|OS|P

1 2 3 4 5 6 7 8 9

24 Martha Evans

Ceramics, Photography



Thrown slip-decorated tableware and photographic prints and cards.

11am-5pm (Fri 1pm-6pm)
Railway Studios
Forest Works, Forest Road
Charlbury OX7 3HH

www.marthaevans.me

W|OS|D|R|P|T

1 2 3 4 5 6 7 8 9

25 Maureen Sparling

Painting, Various



A varied selection of paintings in watercolours and oils.

11am-6pm

Forest Cottage
Church Lane
Charlbury
OX7 3PX
07779 779121

www.maureensparling.co.uk

OS

1 2 3 4 5 6 7 8 9

28 Briony Lawson OAS

Sculpture



Sculptures in stone, wood and clay with new work created during the pandemic.

12-5pm (Sat/Sun 11-6pm)
Gothic House
Church Street
Charlbury
OX7 3PP
01608 811483

www.brionylawson.com

W | OS

1 2 3 4 5 6 7 8 9

26 David Pollock

Drawing, Painting



Colourful watercolour, ink and gouache images from Oxfordshire to Tamil Nadu.

11am-6pm
The Lawn, Market Street

Charlbury
OX7 3PJ
07590 486671

www.davidpollockartist.co.uk

OS

1 2 3 4 5 6 7 8 9

29 Di Gold

Glass



Open studio. Work in progress on commissions for windows. Panels for the house and garden.

11am-6pm
Lindsell House, Sheep Street
Charlbury
OX7 3RR. 07891 958142

OS

1 2 3 4 5 6 7 8 9

Additional Charlbury venue
- see listing 278

27 Wendy Clifford | Jane Crane | Patricia Freeman

Various



A vibrant and colourful exhibition of paintings, sculpture, jewellery and ceramics.

11am-5pm
Flowerpot
Market Street
Charlbury OX7 3PH

W | OS | R (& 10 May)

1 2 3 4 5 6 7 8 9

30 Claire Fyfe-Jackson

Jewellery



Unique designer jewellery in gold, silver, precious and semi-precious stones. Recycled metal flowers.

11am-6pm
Sarts Cottage
The Ridings
Stonesfield OX29 8EA
01993 898327
clairepote16@hotmail.com
[/clairefyfejackson](https://www.instagram.com/clairefyfejackson)

1 2 3 4 5 6 7 8 9

31 Grey Cat Studio

Various



Jewellery, painting & printmaking: art & crafts in different media by Rachael Sherlaw-Johnson, Rebecca Sherlaw-Johnson, Jenny Lines & Kerry Burniston.

11am-5pm
Grey Cat Studio
Woodlands Rise
Stonesfield OX29 8PL
07771 707818
rachaelsherlaw-johnson.co.uk

OS | P

1 2 3 4 5 6 7 8 9

34 Cally Bond

Drawing, Painting



Cally is fascinated by the colours, shapes and moods of the sky and sea.

12-6pm (Fri 12-8pm; Sun 12-4pm)
1 Heathfield, Swinbrook Road
Shipton-under-Wychwood
OX7 6DX. 07734 679390
carolynpbond@yahoo.co.uk
[/twintomatoesart](https://www.instagram.com/twintomatoesart)

OS | P

1 2 3 4 5 6 7 8 9

32 Alison Townley WOA

Wychwood Pottery
Ceramics



Wheel-thrown functional stoneware pottery, decorated by hand and made in a home studio in the Wychwoods.

11am-4pm
Coldstone Farm, High Street
Shipton-under-Wychwood
OX7 6DQ. 07766 162917
[/wychwoodpottery](https://www.instagram.com/wychwoodpottery)

OS | D | R (& 14-16 21-23 May)

1 2 3 4 5 6 7 8 9

35 Louise Searby

Upton Pottery
Ceramics, Pottery



Home of the double/quail/personalised eggcup. New for 2021: a ground-breaking soap dish! 'Astonishing'

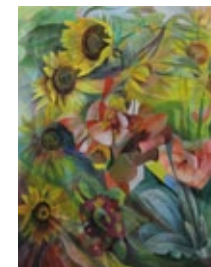
★★★★★
11am-6pm
Staytes Farm, Upton nr Burford
OX18 4LX. 07976 094409
lou@uptonpottery.co.uk
[/upton_pottery](https://www.instagram.com/upton_pottery)

OS | D | P | T

1 2 3 4 5 6 7 8 9

33 Julia Sorrell

Ian Sanders
Painting, Wood, Various



Drawings, paintings and textiles by Julia Sorrell RI; hand-sculpted 'Tree-Tables' by Ian Sanders.

11am-6pm
Littlestock, Meadow Lane
Shipton-under-Wychwood
OX7 6BW. 01993 832537
www.juliasorrell.com

W | OS | D | R | P

1 2 3 4 5 6 7 8 9

36 Guen Palmer

Jewellery



Contemporary jewellery designed & handmade using precious materials with unusual gemstones & pearls.

11am-5pm
The Old Forge
Asthall Barrow Farm
Asthall nr Burford
OX18 4 HJ
07899 961655
www.guenpalmer.com
[/guen_palmer](https://www.instagram.com/guen_palmer)

W | OS | P

1 2 3 4 5 6 7 8 9

37 Christopher Townsend

Sculpture



A collection of Chris' latest metal sculptural creations, in a rustic farm courtyard setting. 11am-5pm

The Old Forge

Asthall Barrow Farm

Asthall nr Burford. OX18 4HJ

07941 503519

christophertownsend.co.uk

[/lovethetreeart](https://www.instagram.com/lovethetreeart)

W | OS | R | P

1 2 3 4 5 6 7 8 9

40 Ben Drew | Sue Drew

Ceramics, Various



Large garden stoneware ceramics, mixed media and domestic pottery. Also open 15th & 16th, 22nd-23rd. 12-5.30pm

(Thu/Fri 2-5.30pm)

Calf Pens

Friars Court

Clanfield OX18 2SU

07760 114979

drewceramics@gmail.com

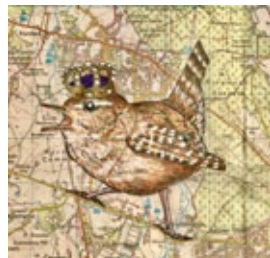
[/drewceramics](https://www.instagram.com/drewceramics)

W | OS | P (& 15-16, 22-23 May)

1 2 3 4 5 6 7 8 9

38 Nic Vickery

Various



A collection of animal art, from traditional pastels, to quirky pen, ink and watercolour. 11am-5pm

The Old Forge

Asthall Barrow Farm

Asthall nr Burford. OX18 4HJ

07870 140659

nicvickeryanimalartist.com

[/nicvickeryartist](https://www.instagram.com/nicvickeryartist)

OS | D | P

1 2 3 4 5 6 7 8 9

41 Drew School of

Ceramics, Various



A wide variety of ceramic techniques & pieces made by students of the new Drew School of Ceramics in its first year. 12-5.30pm

(Thu/Fri 2pm-5.30pm)

Calf Pens, Friars Court, Clanfield

OX18 2SU. 07760 114979

[/drewschoolofceramics](https://www.instagram.com/drewschoolofceramics)

NS (& 15-16, 22-23 May)

1 2 3 4 5 6 7 8 9

39 Darren Hall WOA

Drawing, Painting



A home studio full of artworks, Darren's everyday working environment. From 1st-23rd except 11th, 13th, 18th & 20th. 10-2pm & 5-7pm (Sat/Sun 10-12 & 2-6pm)

41 Black Bourton Road

Carterton OX18 3HJ

07546 067323

[/darrenhall_artstudio](https://www.instagram.com/darrenhall_artstudio)

W | OS | P

1 2 3 4 5 6 7 8 9

42 Silvi Schaumloeffel

WOA

Painting



Contemporary oil painting studio, focusing on expressive mark making and colour relationships. Also open 15th-16th, 20th-23rd. 11am-4pm (Sat/Sun 10-4pm)

Friars Court

Clanfield

OX18 2SU

07816 890207

www.artbysilvi.com

[/artbysilvi](https://www.instagram.com/artbysilvi)

W | OS | P

1 2 3 4 5 6 7 8 9

43 Michele Wallington

WOA Painting



Paintings, prints & cards of mostly local & regional landscapes, oil, acrylic, watercolour. Café next door. Also open 11th-16th. 10am-4pm

Barn Cottage Main Street

Clanfield nr Bampton

OX18 2SH. 07917 361296.

michelewallington.co.uk

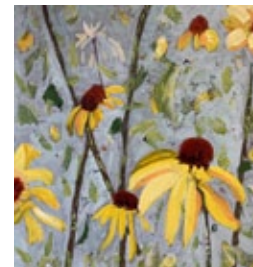
[/mic_wallington_art](https://www.instagram.com/mic_wallington_art)

W | OS | P | T

1 2 3 4 5 6 7 8 9

46 Faye Knight WOA

Painting



Contemporary artist exploring the freedom and serenity found in the natural world. 11am-6pm

West Ox Arts Gallery

Town Hall, Market Square

Bampton OX18 2 JH

07541 856796

www.fayeknight.art

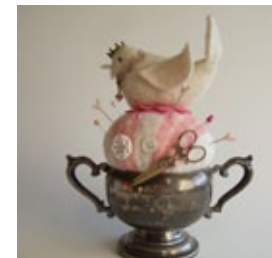
[/knightfaye](https://www.instagram.com/knightfaye)

W | P

1 2 3 4 5 6 7 8 9

44 Marjolein Trewavas

WOA Jewellery, Various



Antique fabrics, silverware and dolls transformed into quirky creatively upcycled items such as pin cushions and windchimes. 11am-6pm

Holly Cottage

5 Duttons Courtyard

Cheyne Lane, Bampton

OX18 2EX. 07743 167427

[/roomforchangevintage](https://www.instagram.com/roomforchangevintage)

OS | D

1 2 3 4 5 6 7 8 9

47 Pip Shuckburgh OAS

WOA

Painting



Small atmospheric oil paintings to cheer up your walls in this difficult time, exhibited for sale in a home gallery & online. 11am-6pm

The Studio, Dragonfly

Cheapside

Bampton OX18 2JL

07910 671892

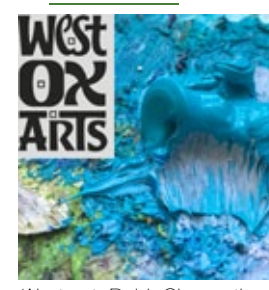
rashuckburgh@gmail.com

[/pipshuckburgh](https://www.instagram.com/pipshuckburgh)

W | OS

1 2 3 4 5 6 7 8 9

45 West Ox Arts Various



'Abstract, Bold, Chromatic, Detailed, Exquisite, Fresh': a wide variety of beautiful creations in a light modern gallery. Runs 'til 5th June. 11am-6pm (frm 9th 11.30-4.30pm)

The Gallery, Town Hall

Market Square, Bampton

OX18 2JH. 07762 578473

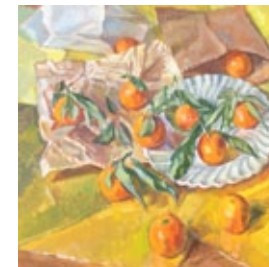
www.westoxarts.com

W | D | P

1 2 3 4 5 6 7 8 9

48 Neville Crowson WOA

Painting



Plein air landscapes, seascapes, church interiors, garden scenes and still life on view in the house and garden. 11am-6pm

Blomfield House

Cote nr Bampton

OX18 2EG

01993 850139

nevillecrowson36@gmail.com

OS | P

1 2 3 4 5 6 7 8 9

49 Jessica Parker
Mixed Media



Mixed media landscapes involving the use of collage materials with acrylics, inks and pastels. 10am-6pm
Kingfisher Studios, Unit 30
Crawley Mill Industrial Estate
Dry Lane, Witney
OX29 9TJ. 01993 899009
www.kingfisherstudios.biz
[/kingfisherstudios_ox](https://www.instagram.com/kingfisherstudios_ox)
W|O|S|D|R|P|T

1 2 3 4 5 6 7 8 9

52 Eric White
Painting



Passionate about pastel!
Deliciously decorative
landscapes and riverscapes in
sumptuous colour.
11am-6pm (Sun 12-6pm)
28 Mill Street
Eynsham. OX29 4JS
01865 722989
ericj.white@yahoo.co.uk
[/ericwhite5599](https://www.instagram.com/ericwhite5599)

1 2 3 4 5 6 7 8 9

50 Jane Tomlinson
| **Paul Tomlinson** Painting



You'll love what siblings Paul & Jane Tomlinson have to show: drawing & painting, observation & imagination, colour & calm, light & shade.
12pm-5.30pm
7 Pigeon House Lane
Freeland, nr Witney OX29 8AG
01993 882088
www.janetomlinson.com
P

1 2 3 4 5 6 7 8 9

53 Alison Holmans
| **Rosalind Duffy WOA**
| **Anne Macdonald**
Various

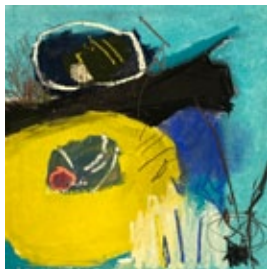


Stoneware & raku ceramics, some quirky. Seascapes; colourful glass and décor.
11am-6pm
Chicken Run Studio. The New House, Tanners Lane, Eynsham OX29 4HJ. 07452 956559
www.chickenrunstudio.co.uk
[/chickenrunstudio](https://www.instagram.com/chickenrunstudio)

O|S|D

1 2 3 4 5 6 7 8 9

51 Alison Berrett WOA
Drawing, Painting



Hopeful paintings and drawings expressing a dynamic connection with colour and the natural world.
11am-6pm
2 Newfield Cottages
Eynsham. OX29 4BG
07745 105506
www.alisonberrettartist.com
[/alisonberrettartist/](https://www.instagram.com/alisonberrettartist/)
O|S|P

1 2 3 4 5 6 7 8 9

54 Julia Loken
Painting



Detailed yet vibrant, glowing watercolours, mainly plant related. The large garden which inspires the artist is also open.
11am-6pm
Myrtle Cottage
Tanners Lane
Eynsham OX29 4HJ
01865 881404
www.loken.co.uk

W|O|S

1 2 3 4 5 6 7 8 9

55 Peter Shrimpton
Sculpture



A range of contemporary sculptures and images in the garden of The Queens Head.
12-11.30pm
(Mon-Thu 12-3pm & 5.30-11.30pm)
The Queens Head
17 Queen Street
Eynsham OX29 4HH
07980 795330
www.isandd.co.uk

W|O|S|R

1 2 3 4 5 6 7 8 9

58 Challoner Spokes
Drawing, Painting



Original artwork inspired by colour and line and free demonstrations.
11am-4pm
97 Waverley Avenue
Kidlington
OX5 2ND
07740 643414
www.challonerspokes.co.uk
[/challyspokes](https://www.instagram.com/challyspokes)
O|S|D

1 2 3 4 5 6 7 8 9

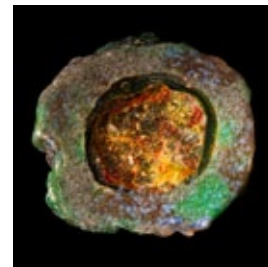
56 Kevin Hinton
Drawing, Painting



Drawings and prints from and inspired by over 1,000 daily sketches, plus paintings and other works.
11am-6pm
Mill Lane House
Mill Lane
Cassington
OX29 4DL
07747 621596
www.planetkev.co.uk

1 2 3 4 5 6 7 8 9

59 Pam Fyvie OCG WOA
Glass



Pam's latest explorations into the natural world using glass, including meteorites that glow in the dark.
11am-6pm
95 Waverley Avenue
Kidlington
OX5 2ND
07813 992610
pam.fyvie@gmail.com
W|O|S|D|R|P|T

1 2 3 4 5 6 7 8 9

57 Daniel Blackmore
Painting



Paintings of Oxford city and Cotswold countryside, children, woods, canal boats & the natural world, mainly in watercolours. Various styles.
12pm-6pm (Sat/Sun 11-6pm)
105 Rutten Lane
Yarnton nr Kidlington
OX5 1LT
01865 682748
www.theblackmores.org.uk

W|P (& 15-16 22-23 May)

1 2 3 4 5 6 7 8 9

60 Bowley House
Various



'Reconnecting': mixed media neighbourhood group inspired by a shared courtyard setting.
11am-4pm
Bowley House
Rectory Lane
Woodstock
OX20 1UF
www.janegreer.com

1 2 3 4 5 6 7 8 9

61 Dylan Bowen

Ceramics



Slip-decorated earthenware ceramics: functional and decorative.

11am-6pm
The Old Smithy
12 The Green
Tackley OX5 3AF
01869 331278

www.dylanbowen.co.uk
[/dylanbowenceramics](https://www.instagram.com/dylanbowenceramics)
W | OS | P

1 2 3 4 5 6 7 8 9

64 Bicester Art Network

Various



More than twenty local Bicester artists come together to showcase a wide range of stunning artworks.

11am-5pm
Bicester Hotel & Spa
Chesterton
OX26 1TH
07889 971629

[f/groups/562140264117009](https://www.facebook.com/groups/562140264117009)
P

1 2 3 4 5 6 7 8 9

62 Erin May Forsyth

Jewellery, Photography



A mixture of work from two young photographers, including street photography, sports & equine photography and portraiture. 9am-7pm

South Green House
South Green, Kirtlington
OX53HJ. 07707 072529

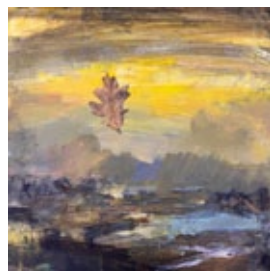
[/erinforssythphotography](https://www.instagram.com/erinforssythphotography)
W | OS | R | P

1 2 3 4 5 6 7 8 9

65 Morag Taylor

Martin Taylor

Various



Mixed-media, oils and acrylic by two art educators inspired by walks and journeys.

11am-6pm
Greystones Church Lane
Charlton-on-Otmoor
nr Kidlington OX5 2UA
01865 331431

greystonesartstudio@gmail.com

1 2 3 4 5 6 7 8 9

63 Fleur Enser

Pottery



Monochrome brushstrokes or textures on hand-built ceramics, created in a studio in canal-side village.

11am-5pm
The Old Rickyard
Church Lane, Lower Heyford
OX25 5NZ. 01869 347905

www.fleurenser.co.uk
[/fleurenser](https://www.instagram.com/fleurenser)
W | OS | P

1 2 3 4 5 6 7 8 9

66 William North

Painting



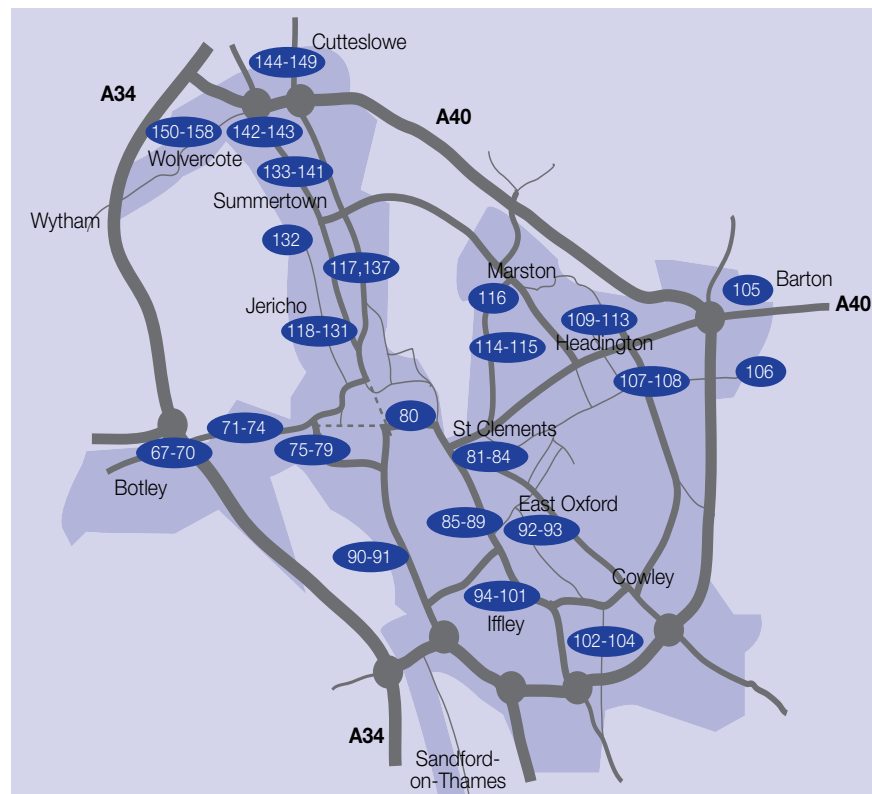
Watercolours of Otmoor and Oxfordshire and some from further afield. Large garden with ponds and lake to get lost in.

11am-6pm
Oddington Crossing
Charlton-on-Otmoor
Kidlington
OX5 2UN
01865 331535

www.williamnorth.co.uk

W | P

1 2 3 4 5 6 7 8 9



Oxford City Map

This map is to provide approximate guidance only. Please use the venue addresses provided with a road map or SatNav to locate specific exhibitions.

Additional Information

Visit the Artweeks website to see, for many exhibitors, further details, artist biographies, additional pictures of artists' work and to check for any changes and updates.

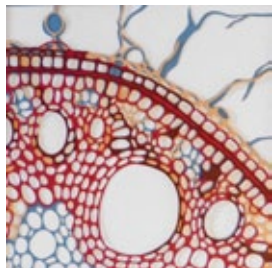
Local Area Trails

Some groups of artists, coordinated by local volunteer organisers, have put together more detailed trail maps to help you navigate from venue to venue. Many of these can be downloaded at www.artweeks.org

All venues have committed to be COVID-secure. As regulations change, please check on-line for updates to each venue's arrangements before travelling. You might also wish to book an appointment at some venues. Also, visit our virtual festival from 1st-23rd at www.artweeks.org

67 Kate Hipkiss OAS OCG

Paper



Kate works with paper, cutting intricate designs by hand to create complex layers, inspired by architecture, landscape & the natural world. 11am-6pm

51 Laburnum Road
Botley OX2 9EN

www.katehipkiss.co.uk

[/katehipkiss](https://www.instagram.com/katehipkiss)
OS

8 9 10 11 12 13 14 15 16

70 Ali Hogg | Jane Hogg

Various



Paintings, drawings, text art, collage, handmade paper, 3D assemblage & photography in a home studio. Prints & cards available. 10am-6pm (Thu 10-8pm)

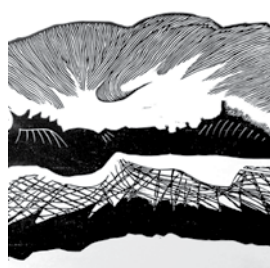
42 Arthray Road, Botley
OX2 9AB. 07811 568874
thehoggs42@gmail.com

[/ali.hogg](https://www.instagram.com/ali.hogg)
W | OS | P

8 9 10 11 12 13 14 15 16

68 Emmett Casley

Drawing, Printmaking



Printmaking, drawings & ink work, taking in architectural forms & abstracted shapes Emmett finds interesting. 11am-5pm

5 Crabtree Road
Botley OX2 9DU
01865 427519

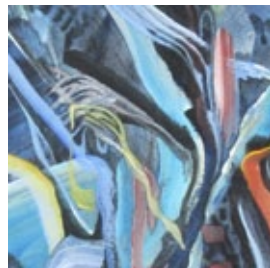
www.emmettcasley.com

[/emmett_casley](https://www.instagram.com/emmett_casley)
OS

8 9 10 11 12 13 14 15 16

71 John Luke King-Salter

Painting



Detailed, dark, intensely-focused abstract paintings inspired by music, poetry and mythology. 11am-6pm

32 Helen Road
OX2 0DE
07965 833078

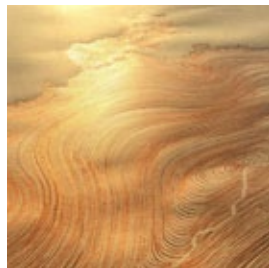
www.jlks-art.com

[/jl_kingsalter_artist](https://www.instagram.com/jl_kingsalter_artist)
OS

8 9 10 11 12 13 14 15 16

69 Mark Clay OAS WOA

Drawing, Mixed Media



Mark shares work from his recently completed Masters in Fine Art, as well as current and new projects. 11am-5pm

88 Arthray Road
Botley OX2 9AB
07772 406468

www.markclay.co.uk

[/mrclayox](https://www.instagram.com/mrclayox)
W | OS | R | P

8 9 10 11 12 13 14 15 16

72 wocART

Various



wocART brings together six local artists to consider 'Community'. Diverse styles in varied media: ceramics, painting, photography & more. 11am-6pm (Fri 11-8pm)
West Oxford Community Centre
Botley Road OX2 0BT
01865 245761

P

8 9 10 11 12 13 14 15 16

73 Elaine Kazimierczuk

Painting



Semi-abstract paintings of the natural world. Also see page 13 and venue 139. 1pm-6pm

2 North Street
Osney Island
OX2 0BD

www.elainekazimierczuk.com

[/elainekazimierczuk](https://www.instagram.com/elainekazimierczuk)

8 9 10 11 12 13 14 15 16

76 Sue Smith OAS

Drawing



Detailed black and white pen drawings of imaginary landscapes. Runs 1st -23rd May. 9am-11pm (Sun 9-6pm)

The Jam Factory
4 Hollybush Row
Oxford OX1 1HU

[/mcshoesue](https://www.instagram.com/mcshoesue)

W | R

8 9 10 11 12 13 14 15 16

74 Elizabeth Newbery

Ceramics



Handbuilt earthenware dishes and small pinch pots decorated with slips, glazes and lustres. 2pm-6pm

3 North Street, Osney Island
OX2 0AY. 07816 268145
elizabethnewberyceramics.com

[/elizabethmnewbery](https://www.instagram.com/elizabethmnewbery)
OS

8 9 10 11 12 13 14 15 16

77 OVADA

Textiles, Various



A Covid quilt, from a call out for quilt squares, & other work created during/in response to the pandemic. Also open Fri 7th & 21st-23rd. 11am-5pm

14A Osney Lane
OX1 1NJ. 01865 200979

www.ovada.org.uk

[/ovada_gallery](https://www.instagram.com/ovada_gallery)

8 9 10 11 12 13 14 15 16

75 The Jam Factory

Various



Open Call exhibition at the Jam Factory, showcasing a diverse range of artists and their talent. From 1st-23rd May. 9am-11pm (Sun 9am-6pm)

The Jam Factory
Hollybush Row, Oxford
OX1 1HU. 01865 244613

thejamfactoryoxford.com

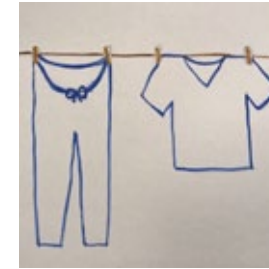
[/thejamfactoryoxford/](https://www.instagram.com/thejamfactoryoxford/)
W | R | T

8 9 10 11 12 13 14 15 16

78 Jill Green WOA

Nimmi Naidoo

Installation



'Hung out to dry': a tribute to all the key workers who, by doing their job, died of Covid-19. 24 hours a day

11am-6pm
Bonn Square
Oxford OX1 1LQ

[/hung_out_to_dry_](https://www.instagram.com/hung_out_to_dry_)

8 9 10 11 12 13 14 15 16

79 Kathryn Croxson

Various



Creations from the epicentre of colour using its uplifting powers to inspire positivity: textiles, painting, ceramics & more. 10am-6pm
The Granary, Clarks Row
Oxford OX1 1RE
07437 378542

www.kathryncroxson.com

[/kcroxson](https://www.instagram.com/kcroxson)

OS

8 9 10 11 12 13 14 15 16

82 Oxford Printmakers

Co-op (OPC) Printmaking



A fabulous printmaking studio for over 4 decades in East Oxford: colourful prints; members at work. 12pm-5pm
Oxford Printmakers
Christadelphian Hall
Tyndale Road OX4 1JL
01865 726472

oxfordprintmakers.co.uk

[/oxfordprintmakers](https://www.instagram.com/oxfordprintmakers)

OS | D

8 9 10 11 12 13 14 15 16

80 Bernard Galewski at

Stanford University

Photography



Limited edition fine art photographs depicting adjustments in Stanford House and Oxford during the pandemic.

10am-5pm
Stanford University Centre
in Oxford, Stanford House
65 High Street OX1 4EL
07920 763231

sharon.scott@stanford.edu

W

8 9 10 11 12 13 14 15 16

83 Philippa Redman

Painting



Colourful paintings in oil and watercolour of a variety of subjects in a light and airy conservatory.

By appointment.
17 Tyndale Road
Oxford OX4 1JL
01865 243249

philippa.redman@outlook.com

8 9 10 11 12 13 14 15 16

81 Sara Banerji

Drawing, Painting, Sculpture



Winding, leafing or scowling sculptures and great, glittering artworks created with Sara's secret technique. Open from 1st-23rd, closed Mon/Tues.

3pm-6pm
7 London Place
Oxford OX4 1BD
01865 251250

www.sarabanerji.com

OS | D | R (1-2 5-9 12-16 19-23 May)

8 9 10 11 12 13 14 15 16

84 Emma Davis OAS

Mixed Media, Painting,



Lockdown collages, abstract paintings, colour, chaos and humour.

12pm-6pm
14 Rectory Road
Oxford OX4 1BU
07767 862540

www.emmadavispainting.com

[/studio.emmadavis](https://www.instagram.com/studio.emmadavis)

OS

8 9 10 11 12 13 14 15 16

85 Magdalen Road Studios

Various



An opportunity to see a selection of work from resident and associate artists of MRS.

1pm-6pm
74-77 Magdalen Road
Oxford OX4 1RE

www.magdalenroadstudios.com

[/magdalenarts](https://www.instagram.com/magdalenarts)

OS

8 9 10 11 12 13 14 15 16

88 ArtWorks School of Art

Miscellaneous



Come and see the inspiring artwork of our young artists (8-18yrs) who have shown such resilience and dedication. 10am-3pm (Sat/Sun 11-5pm)

St Mary and St John Primary School
Bedford Street OX4 1SU
0775 1736078

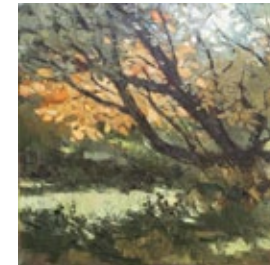
www.artworks.org.uk

W | P | NS

8 9 10 11 12 13 14 15 16

86 Jane Hope OAS

Painting



Paintings from sketches done on lockdown walks in The Kidneys and Ifley Meadows. 11am-6pm (Thu 11am-8pm)

64 Argyle Street
Oxford OX4 1SS
07948 977459

www.janehope.co.uk

[/janehopeartist](https://www.instagram.com/janehopeartist)

8 9 10 11 12 13 14 15 16

89 Stacey Gledhill

Painting



A selection of still-life, interiors and local landscapes from small works on paper to large hand-stretched canvases.

11am-7pm
14 Swinburne Road
Oxford OX4 4BG
07848 418661

www.staceygledhill.com

[/stacey_gledhill_art](https://www.instagram.com/stacey_gledhill_art)

W | OS | P

8 9 10 11 12 13 14 15 16

87 St Mary and St John

Primary School

Miscellaneous



Come & see some of the wonderful artwork produced by the children and school community in this celebration of creativity 10am-3pm

St Mary & St John Primary School, Bedford Street
OX4 1SU 01865 723841

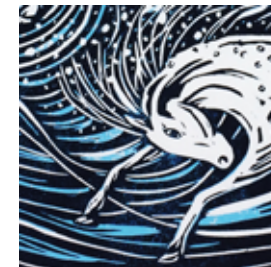
www.ssmj.oxon.sch.uk

W | P | NS

8 9 10 11 12 13 14 15 16

90 Sophie Basilevitch

Printmaking



Bold, colourful lino prints inspired by animals and nature in myths and stories.

12pm-6pm (10th-14th by appt only)
10B Gordon Street
Oxford OX1 4RJ
07854 863895

[/beryozamade](https://www.instagram.com/beryozamade)

T

8 9 10 11 12 13 14 15 16

91 New Hinksey Arts

Various



A community of established and new artists showing in a reclaimed water pumping station at the southern end of Hinksey Park.

12-5pm (Fri 12-9pm)
South Oxford Community Centre
Lake Street OX1 4RP
01865 242666

[/southoxfordcommunitycentre/](#)
W|D|R|P|T

8 9 10 11 12 13 14 15 16

94 Sally Levell OAS OPC | Morna Rhys OAS OPC

Printmaking



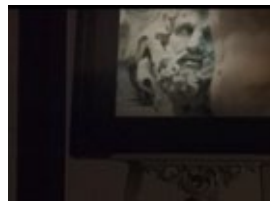
Two printmakers who approach British landscape in different and individual ways.

11am-6pm
The Basement (Garden Entrance)
7 Tree Lane
Iffley OX4 4EY
01865 748520
[www.sallylevell.com](#)
[www.mornarhys.co.uk](#)

8 9 10 11 12 13 14 15 16

92 Nicholas Phillips

Painting



Paintings in watercolour & collages combining Cinderella versions of the paintings with original items of postal history.

4pm-7pm
114b Cricket Road
Oxford OX4 3DL
07836 648581
[www.nicholasphillips.co.uk](#)

8 9 10 11 12 13 14 15 16

95 Rob Farrands

Photography



A Family in Time: Life, death and re-birth pictured across three generations in the beautiful Romanesque setting of St Mary's Church, Iffley.

10am-6pm
The Church of St Mary the Virgin
Church Way
Iffley OX4 4EJ
[www.figure-ground.photography](#)

W|P

8 9 10 11 12 13 14 15 16

93 Bridget Wheatley OCG

Jewellery



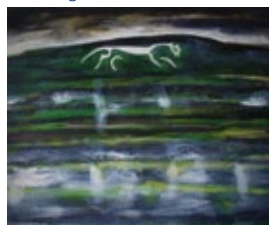
Collections of original handmade and nature-inspired jewellery in a garden studio.

12pm-5pm (Sun 12pm-4pm)
187 Campbell Road
Oxford OX4 3NT
07887 501409
[www.bridgetwheatley.com](#)
[/bridgetwheatleyjewellery](#)
OS|P

8 9 10 11 12 13 14 15 16

96 Phil Whiting

Painting



Landscape and Memory: recent paintings in the beautiful Romanesque setting of St Mary Church, Iffley.

10am-6pm
Church of St Mary the Virgin.
Church Way
Iffley OX4 4EJ
[philwhitinglezere@hotmail.co.uk](#)

W|OS|P

8 9 10 11 12 13 14 15 16

97 Sally Dorrry WOA

Ceramics



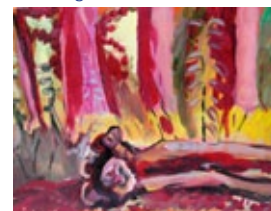
Unique handbuilt pots, both functional and sculptural, in a range of shapes and glazes, for indoors and outside.

11am-6pm (Mon-Thu 11-5pm, Fri 11-7pm)
25 Abberbury Road, Iffley
OX4 4ET. 07944 538517
[www.sallydorrry.co.uk](#)
[/sally.dorrry](#)
OS|D|P

8 9 10 11 12 13 14 15 16

100 John Grandy

Painting



These paintings have been made near Littlemore and Harcourt Hill.

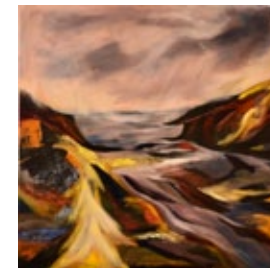
11am-6pm
55 Courtland Road
Rose Hill
OX4 4HZ
01865 401390
[harcourtwoods.weebly.com](#)

OS

8 9 10 11 12 13 14 15 16

98 Bridget Farrands

Painting



Patterned Landscapes: vivid, semi-abstract landscapes in oils and acrylics.

11am-6pm (Mon-Thu 11-5pm, Fri 11-7pm)
25 Abberbury Rd
Iffley OX4 4ET
07885 773049
[bridget.farrands@icloud.com](#)

OS|D|R|P

8 9 10 11 12 13 14 15 16

101 Elaine Allender

Painting



New paintings inspired by Cornish harbours, Oxford street scenes & English countryside. Prints & cards also available.

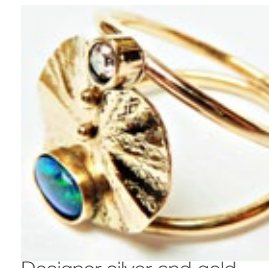
10am-6pm
77 Courtland Road, Iffley
OX4 4HZ. 07870 929768
[www.elaineallenderart.co.uk](#)
[/elaineallenderart](#)

OS|R|P

8 9 10 11 12 13 14 15 16

99 Chloe Romanos

Jewellery



Designer silver and gold jewellery with gemstones, inspired by archaeological artefacts, faraway places and Art Nouveau.

11am-6pm (Mon-Thu 11-5pm, Fri 11-7pm)
25 Abberbury Road
Iffley OX4 4ET
01367 718141

[www.cloeaejewellery.com](#)
[/cloeaejewellery](#)

8 9 10 11 12 13 14 15 16

102 Westbury People's Gallery

Various



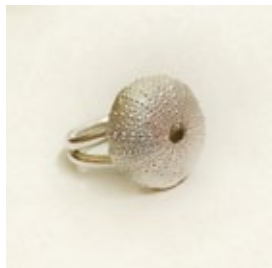
A community gallery with contributions from artists in all fields.

11am-6pm
1 Westbury Crescent
Oxford
OX4 3RZ
07872 991287
[malcolm.atkins1@ntlworld.com](#)
W|OS

8 9 10 11 12 13 14 15 16

103 Becky Morgans OCG

Jewellery



Handmade silver & gold jewellery inspired by the sea, organic shapes & designs.
11am-6pm

139 Herschel Crescent
Littlemore
OX4 3TX
07773 018984

www.beckyjewellery.com
[/beckymorgans_jewellery](https://www.instagram.com/beckymorgans_jewellery)
P

8 9 10 11 12 13 14 15 16

106 Sophie Mack Smith

Alan Brouder
Tim Forster

Mosaics, Photography, Wood



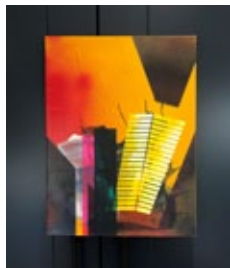
Mosaics, art from reclaimed wood, and photography in a magical woodland setting.
11am-6pm
Simsbury, The Ridings
Oxford OX3 8TB
07914 809250

[/OxfordMosaics](https://www.instagram.com/OxfordMosaics)
OS | D | R

8 9 10 11 12 13 14 15 16

104 Rob Griffiths

Painting



An Oxford based artist with a background in town & landscape planning explores the contrast of urban & natural forms. Also open Fri 7th
11am-6pm

28 Boswell Road, Oxford
OX4 3HN. 07737 297942
robgriffiths40@yahoo.com
[/b_griff_art](https://www.instagram.com/b_griff_art)

8 9 10 11 12 13 14 15 16

107 Jane Strother OAS

Painting



Contemporary oil paintings, mainly landscape. Studio & virtual exhibition.
Appointments. Large show, space to browse. Parking.
12pm-6pm (Thu 12pm-8pm)
101 Old Road
Headington OX3 8SX
07505 214795

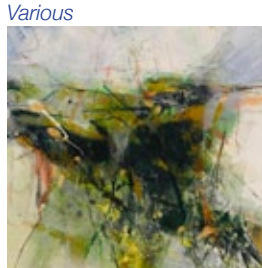
www.janestrother.co.uk
[/janestrotherstudio](https://www.instagram.com/janestrotherstudio)

OS | P | T

8 9 10 11 12 13 14 15 16

105 St Mary's Church Barton

Various



A rich variety of creative work from community members of all ages.
1.30pm-6pm

St Mary's Church
Bayswater Road, Headington
OX3 9E
0791 463098
www.stmarysbarton.com
W | R | P

8 9 10 11 12 13 14 15 16

108 Gilly Whittington OCG

WOA
Ceramics



Gloriously coloured ceramics in porcelain. Tableware to use & enjoy, and individual vases, platters, teapots & more.
11am-6pm

Bateman Street Studio
25 Bateman Street, Headington
OX3 7BG. 07580 733760
www.gillywhittington.com
[/gillywhittingtonceramics](https://www.instagram.com/gillywhittingtonceramics)

OS | R

8 9 10 11 12 13 14 15 16

109 Jennifer Byrne

Painting



Jennifer is still enjoying the search for a style and medium.

11am-6pm
13 Stephen Road
Headington
OX3 9AY
01865 762298

jenniferbyrne@talktalk.net

8 9 10 11 12 13 14 15 16

112 Angela Beatson Wood

Various



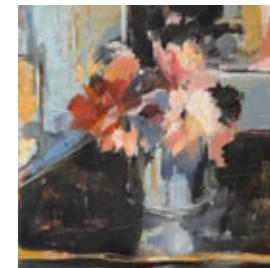
For 2021 Angela, in her studio, shows a wide range of subject matter. Something for everyone!
11am-5pm
Camellia House, 2 St Andrew's Road, Headington
OX3 9DL. 07870 563877
angelabeatsonwood@icloud.com

OS | R | P

8 9 10 11 12 13 14 15 16

110 Harriet Eagle OAS

Various



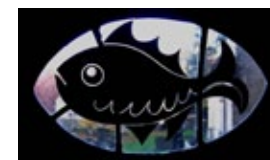
A collection of new works: drawing, painting and printmaking.

1pm-6pm
24 Stephen Road
Headington
OX3 9AY
www.harrieteagle.com
[/eagleharriet](https://www.instagram.com/eagleharriet)

8 9 10 11 12 13 14 15 16

113 Art at St Andrew's

Various



Welcome to our wonderful exhibition by seven artists in a range of media: ceramics, glass, jewellery, painting & photography.
12-6pm

33 St Andrew's Rd
Headington
OX3 9DL

W

8 9 10 11 12 13 14 15 16

111 Deborah Laidlaw OAS

Drawing, Painting



Drawings and paintings that Deborah hopes you will enjoy as much as she does, making them.

1pm-6pm
24 Stephen Rd
Headington
OX3 9AY
07979 707689
deborahlaidlaw1@gmail.com
W | OS

8 9 10 11 12 13 14 15 16

114 David Gye | Jane Gye

Ceramics, Pottery



Ceramics in porcelain and stoneware, thrown, moulded and slipcast.

12pm-6pm (Thu 3pm-6pm)
Pullens Gate
Pullens Lane
Headington
OX3 0BX
07770 444875
david@gye.org.uk

W | OS | P

8 9 10 11 12 13 14 15 16

115 Rebekah Payne

Printmaking



Bright lino prints. Come and have a go at printing one yourself!

11am-6pm

40A Croft Road
New Marston OX3 0LA
07753 333426

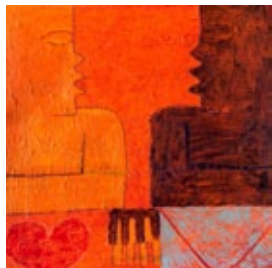
[/printsbyrebekah29](#)
[/printsbyrebekah](#)

W | D | R

8 9 10 11 12 13 14 15 16

118 Gallery 1plus5

Various



A new art gallery situated at a residential house in Jericho, Oxford. Artworks from Africa, Europe, Japan and UK.

Opens Fri 7th.

11am-6pm (Sun 12pm-4pm)

156 Walton Street
Jericho OX1 2HD

07775 206572

[www.gallery1plus5.com](#)

8 9 10 11 12 13 14 15 16

116 Jonathan Morgan

Furniture, Mixed Media



Jonathan gives unloved items a new lease of life by using a little creativity and a lot of resin.

1pm-6pm

Willow Barn, Oxford Road
Old Marston OX3 0PQ
07419 744962

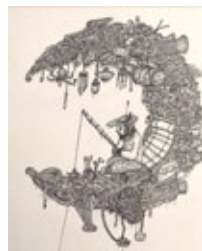
[www.houseoftruc.com](#)
[/houseoftruc](#)

OS | P

8 9 10 11 12 13 14 15 16

119 Chase Marsden OAS

Drawing



A high-detail illustrator known for psychedelic compositions and science fiction abstractions. From 1st-23rd May, closed Sunday.

11am-6pm

34 Walton Street
Jericho OX2 6AA

07375 538679

[www.ronapaintinggallery.com](#)

[/golightly26](#)

W

8 9 10 11 12 13 14 15 16

117 Teresa Munby

Ceramics



Mainly hand-built porcelain (and paper clay) vases, pots, sculptured pieces and tiles in simple white forms or coloured and textured.

11am-6pm

56 Park Town
Oxford OX2 6SJ
[teresamunbyceramics.co.uk](#)

[/teresamunby](#)

8 9 10 11 12 13 14 15 16

120 Susan Avery

Painting



Pure watercolour: light, water, landscape and nature in urban spaces.

11am-6pm

33 Cardigan Street
Jericho
OX2 6BP

01865 557231

[www.susanavery.co.uk](#)

W

8 9 10 11 12 13 14 15 16

121 Valerie Petts OAS

Painting



An eclectic mix of oils, watercolours and giclee prints; framed and unframed. To suit all pockets!

12pm-5pm

48 Cardigan Street
Jericho OX2 6BS
01865 512779

[www.valeriepetts.co.uk](#)

8 9 10 11 12 13 14 15 16

124 Maggie Bicknell OAS

Painting, Printmaking



Oil paintings & etchings of places & objects that caught Maggie's eye this last year.

12pm-6pm (10am-12pm: call for appointment)

14 Plantation Rd
Oxford OX2 6JD
07849 999482

[www.maggiebicknell.wordpress.com](#)

[/maggiebicknellart](#)

8 9 10 11 12 13 14 15 16

122 Rachel Ducker OAS

Sculpture, Jewellery



Unique sculptured wire figures expressing the emotional dynamics of human nature. Bronze & wire pieces.

Handcrafted silver jewellery.

12pm-6pm

7 Shirley Place
Juxon Street OX2 6DN
07855 751756

[www.rachel-ducker.co.uk](#)

[/rachelducker98](#)

8 9 10 11 12 13 14 15 16

125 Tony Thomson

Jewellery



Jewellery 'Slideshows' exhibition. Unique pieces using silver, gold, semi-precious stones, fossils, shells & sea-glass. By appointment only.

51 Plantation Road
Oxford OX2 6JE

01865 512913

[tony.thomson51@icloud.com](#)

8 9 10 11 12 13 14 15 16

123 Clova Stuart-Hamilton

Painting



Richly coloured still lifes and interiors in oil and distemper by professional artist shown in large music room & pretty garden studio.

12pm-6pm (Sun 12pm-5pm)

92 Walton Street
Jericho OX2 6EB
01865 556307

[clova-stuart-hamilton.co.uk](#)

OS

8 9 10 11 12 13 14 15 16

126 Julia Dromgoole

Ceramics, Sculpture



Vibrant free-form hand-built ceramics.

11am-5pm (Thu 2pm-8pm)

15 Kingston Road
Oxford OX2 6RQ
07973 831029

[/juliadromgooleceramics](#)

[/julia.dromgooleceramics](#)

8 9 10 11 12 13 14 15 16

127 Leonie Bennett OCG

Jewellery



Fine jewellery for everyday wear. Vibrant coloured enamel; elegant gold and silver; striking black and gold. 12pm-6pm
82 Southmoor Road
Oxford OX2 6RB
01865 515277
www.leoniebennett.co.uk

8 9 10 11 12 13 14 15 16

130 Jean Somerfield WOA

Painting



Voyages of Discovery: landscapes & still life, in pastel & watercolour, viewed with an abstracting eye. Light, form, colour. 11am-6pm. Appts. by telephone.
55 Kingston Road
Oxford OX2 6RH
01865 559819

P
8 9 10 11 12 13 14 15 16

128 Wendy Newhofer OAS

OCG

Glass



Elegant kiln formed glass for house and garden. Wall panels and miniature landscapes in beautiful painterly colours. 11am-6pm
82 Southmoor Road, Oxford OX2 6RB. 07732 128083
www.wendynewhofer.com
/wendynewhofer
OS | D

8 9 10 11 12 13 14 15 16

131 Wycliffe Hall

Various

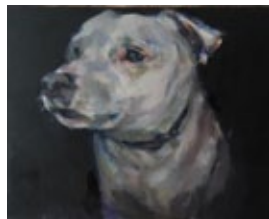


Paintings, sculpture, pottery and mixed media created by students, staff, family and friends of the Hall. 1pm-5pm
54 Banbury Road
Oxford OX2 6PW
01865 274200
www.wycliffe.ox.ac.uk

NS
8 9 10 11 12 13 14 15 16

129 Cathy Landell Mills

Painting



Work in oil, watercolour and pastel. Portraits, landscapes & still life. 11am-6pm
38 Kingston Road
Oxford
OX2 6RH
07807 048507
www.cathylandellmills.com

OS
8 9 10 11 12 13 14 15 16

132 Complins Close Crafts

OCG

Various



High quality jewellery, textiles and glass by selected designer-makers from the Oxfordshire Craft Guild. 11am-6pm (Thu 11-8pm, Sun 10-4pm)
15 Complins Close
The Waterways
OX2 6PZ. 07894 714507
www.gallery.ocg.co.uk

8 9 10 11 12 13 14 15 16

133 Susan Moxley

Various



An exhibition of new work: print, paintings and silver jewellery. 12pm-6pm
43 Oakthorpe Road
Summertown
OX2 7BD
01865 516556
www.susanmoxley.com
/susanmoxley
W | OS

8 9 10 11 12 13 14 15 16

136 The Spice of Life

Various

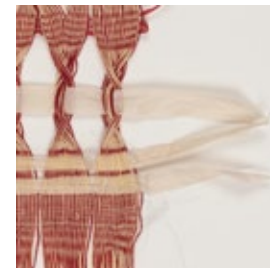


Diverse range of artists bringing their interpretation of life in drawing, painting, mosaics and more. 11am-7pm
KFL Pop-up Gallery
193 Banbury Road
(behind the Spice Lounge)
Summertown OX2 7AR
07976 946331
www.kdlathar.com

P
8 9 10 11 12 13 14 15 16

134 Julia Engelhardt

Textiles



Weavescapes: poetic woven pieces, box framed for wall display. 9.30am-5pm
Legge Carpets
25 Oakthorpe Road
Summertown OX2 7BD
07980 988440
www.juliaengelhardt.co.uk
/juliaengelhardtweave
D

8 9 10 11 12 13 14 15

137 Sarah Hanner Hopwood

Painting



Washy imagined landscapes and British wildlife watercolours from a new Oxford artist, inspired by our need for the natural world. 11am-7pm
193 Banbury Road, Behind 'Spice Lounge', Summertown
OX2 7AR. 07976 239168
www.northstreetstudio.co.uk
/sarahhannerhopwood
P

8 9 10 11 12 13 14 15 16

135 Francesca Shakespeare OAS

Painting



Recent paintings and studio bargains. 11am-6pm
1 Oakthorpe Road
Summertown
OX2 7BD
07976 822773
francescashakespeare.com
/francesca_shakespeare
OS

8 9 10 11 12 13 14 15 16

138 Robyn Hardyman OCG

Ceramics



Fine porcelain vessels thrown on the wheel, glazed in subtle and complementary tones. Check website to confirm dates and times.
35 Stratfield Road
Summertown OX2 7BG
www.robbynhardyman.com
/robyn.hardyman

8 9 10 11 12 13 14 15 16

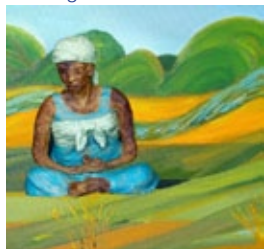
139 Elaine Kazimierczuk
Painting



A major exhibition of Elaine's semi-abstract paintings, including a dramatic 7m panorama and a real living wildflower meadow. Also see venue 73. 10am-4pm (Sat/Sun 12-4pm). The North Wall Gallery, South Parade OX2 7JN. 01865 319450 www.elainekazimierczuk.com [/elainekazimierczuk](https://www.instagram.com/elainekazimierczuk) W | R | P

17-25 May

142 Katherine Shock
| Patricia Freeman
Painting



Warmth and colour abound in inspiration from Port Meadow in oil and watercolour, and garden sculptural figures from South Africa. By appointment 369 Woodstock Road Oxford OX2 8AA 01865 515584 www.katherineshock.co.uk W | P

8 9 10 11 12 13 14 15 16

140 Siobhan Cooney
Mixed Media



For Siobhan, it's all about colour! 11am-5pm (viewing 24hrs) The shop window of 'Vanilla' 13 South Parade Summertown OX2 7JN www.siobhancooney.com [/siobhancooneyartist](https://www.instagram.com/siobhancooneyartist)

8 9 10 11 12 13 14 15 16

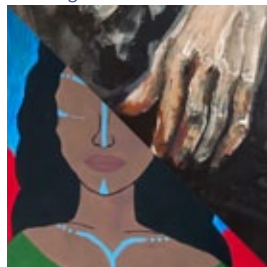
143 The Blandford Avenue
Marquee
Various



Six artists exhibit in a garden setting: ceramics, wildlife drawings, pet portraiture, silver jewellery, printmaking & textiles. 11am-6pm 44 Blandford Avenue, Oxford OX2 8DZ. 01865 514670 www.charlottemarlow.co.uk W

8 9 10 11 12 13 14 15 16

141 Lila Oruč Whiston
| Matti Duda-Szot
Painting



Two young artists striving to express emotion in their art, exhibiting for the first time. 11am-6pm 13A Salisbury Crescent Oxford OX2 7TJ 07913 160643 amnawhiston1@gmail.com [/i_lila_art](https://www.instagram.com/i_lila_art) OS | R | P

8 9 10 11 12 13 14 15 16

144 Vital Peeters
Glass, Sculpture



Beautiful glass art for homes and other buildings. Glass studio and sculpture garden exhibition. 2-6pm by appointment 538 Banbury Road Oxford OX2 8EG 01865 512761 www.vitalpeeters.co.uk [/vitalpeetersglassandstone](https://www.instagram.com/vitalpeetersglassandstone) OS | P

8 9 10 11 12 13 14 15 16

145 Dianne Frank SBA
OAS
Drawing



Botanical subjects rendered in coloured pencil. Prints available. Showing with potter, Tam Frishberg. Covid safety measures followed. 2pm-6pm 10 Hayward Road, Oxford OX2 8LW. 01865 558102 diannefrank@hotmail.com [/diannefrankoxford](https://www.instagram.com/diannefrankoxford) W | P

17-23 May

148 James McNicoll
| Graeme Noble
Ceramics, Painting



A ceramicist and painter join forces showing a mixed bag of work. 11am-6pm 13A Linkside Oxford OX12 8JF 01865 318183

OS | P

8 9 10 11 12 13 14 15 16

146 Tam Frishberg OCG
Ceramics, Pottery



Stoneware pottery pleasing to both hands and eyes. 2pm-6pm Complying with Covid guidelines; open from 15th-23rd May. 10 Hayward Road Oxford OX2 8LW 01865 454274 [/tamfrishberg](https://www.instagram.com/tamfrishberg) W | P

17-23 May

149 Alison Blanchard
Glass, Textiles



Individual fused glass dishes, jewellery, vases, candle holders & flowers in vibrant colours. Beautifully handcrafted bags & textiles. 11am-6pm (Mon-Wed/Fri 1.30-6pm, Thu 1.30-8pm) 67 Five Mile Drive, Oxford OX2 8HW. 07899 953309 www.mrsblanch.co.uk [/mrsblanch_oxford](https://www.instagram.com/mrsblanch_oxford) P

8 9 10 11 12 13 14 15 16

147 Jane Hainsworth
Jewellery

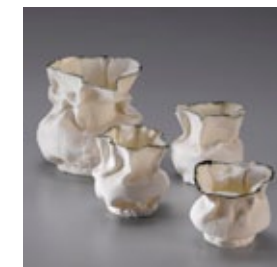


Colourful, individual jewellery for all ages. 2pm-6pm 12 Hayward Road Oxford OX2 8LW 07813 063245 www.fizzipins.com [/fizzipins](https://www.instagram.com/fizzipins)

P

17-23 May

150 Janet Cross WOA
Ceramics



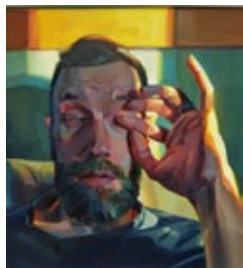
Handbuilt porcelain ceramics inspired by textiles exhibited in the garage/studio of the artist. 11am-6pm 47 Godstow Road Wolvercote OX2 8PE 01865 556093 janetcross47@hotmail.co.uk

W | OS

8 9 10 11 12 13 14 15 16

151 Tom Croft OAS

Drawing, Painting



Oil portraiture, landscapes and still life.

11am-6pm

32 Home Close

Wolvercote

OX2 8PS

www.thomascroft.co.uk

[/tomcroftartist](https://www.instagram.com/tomcroftartist)

OS

8 9 10 11 12 13 14 15 16

154 Sue Weinstock

Glass



Beautiful ethereal fused glass works made with layered metals, oxides and crushed coloured glasses.

11am-6pm

10 Home Close

Wolvercote

OX2 8PS

07813 030139

www.suweinstock.com

D

8 9 10 11 12 13 14 15 16

152 Vicky Cumming

Jewellery



Original handmade silver jewellery, inspired by nature and the sea.

11am-6pm

10 Home Close

Wolvercote

OX2 8PS

vickycummingsilver.co.uk

[/vickycummingsilver](https://www.instagram.com/vickycummingsilver)

P

8 9 10 11 12 13 14 15 16

155 Neil Butterfield OAS

WOA Painting



New semi-outdoor covid-safe venue with Jane Moser (Sculpture), Alison Morris (Jewellery), & Phillip Dove (Stained Glass). Parking.

11am-6pm

27 Meadow Prospect, Wolvercote

OX2 8PP. 07800 658859

www.neilbutterfieldart.co.uk

[/neilbutterfieldart](https://www.instagram.com/neilbutterfieldart)

P

8 9 10 11 12 13 14 15 16

153 Cherry Jaquet

Sculpture



Small unique copper/copper verdigris/aluminium and wire sculptures. Ideal for house and garden.

11am-6pm

10 Home Close

Wolvercote

OX2 8PS

07768 367261

cherryjaquet@gmail.com

[/cherryjaquet](https://www.instagram.com/cherryjaquet)

8 9 10 11 12 13 14 15 16

156 Phillip Dove

Glass



Stained glass. Semi-outdoor, covid-safe venue with Jane Moser (Sculpture), Alison Morris (Jewellery) & Neil Butterfield (Painting). Parking.

11am-6pm

27 Meadow Prospect

Wolvercote OX2 8PP

07974 821864

www.phillipdove.co.uk

W | P

8 9 10 11 12 13 14 15 16

157 Alison Morris

Jewellery



New semi-outdoor, covid-safe venue with Jane Moser (Sculpture), Phillip Dove (Stained Glass) & Neil Butterfield (Painting). Parking.

11am-6pm
27 Meadow Prospect, Wolvercote
OX2 8PP. 07891 084005

alisonmorrisjewellery.com

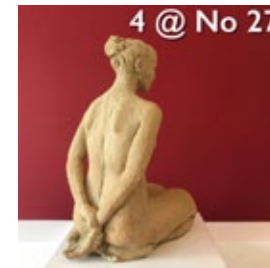
[/alisonmorrisjewellery](https://www.instagram.com/alisonmorrisjewellery)

W | P

8 9 10 11 12 13 14 15 16

158 Jane Moser

Sculpture



New semi-outdoor, covid-safe venue with Neil Butterfield (Painting), Alison Morris (Jewellery) & Philip Dove (Stained Glass). Parking.

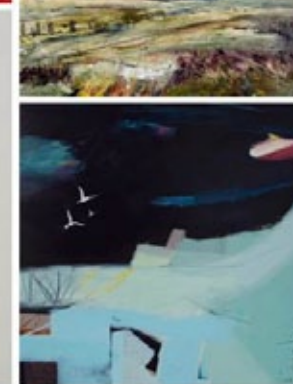
11am-6pm
27 Meadow Prospect
Wolvercote OX2 8PP

07977 578809

jane.s.moser@gmail.com

P

8 9 10 11 12 13 14 15 16



From top, clockwise: Nicola Kantorowicz, Gill Heaton; Karen Joy, Nicola Durrant, Alison Bell, Paul Minter, Jane Peart.

Proud supporters of Artweeks 2021

Art scholarships available at Year 9 and Sixth Form entry

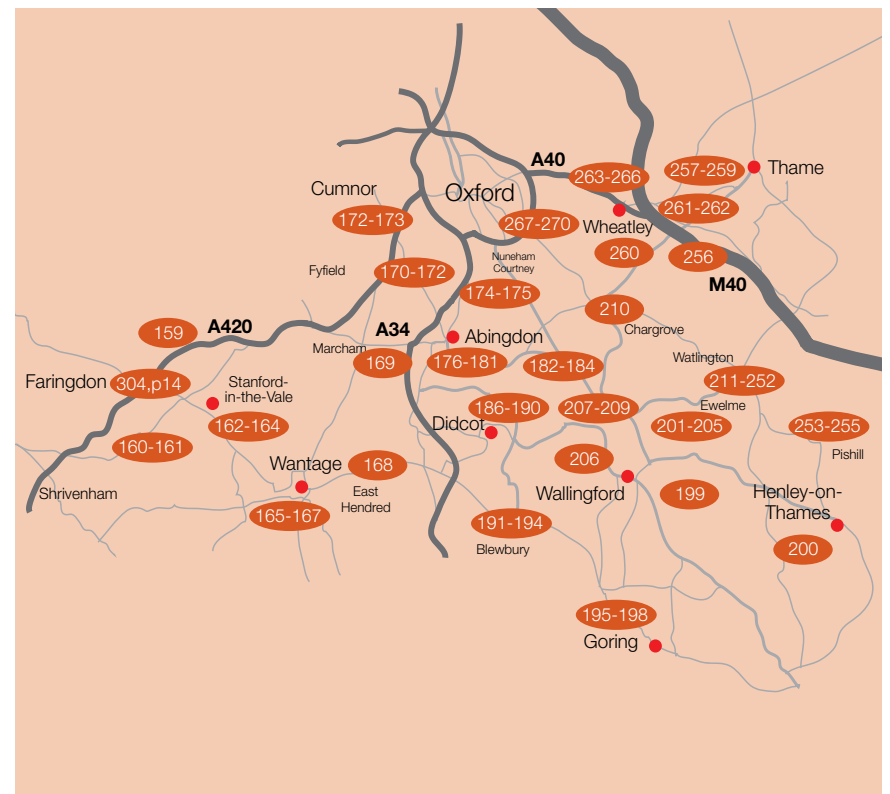
Find out more:
www.shsk.org.uk

Bursaries available from 20-100% of fees



ST HELEN &
ST KATHARINE

Independent day school for girls aged 9–18
ABINGDON • OXFORDSHIRE



South Oxfordshire Map

This map is to provide approximate guidance only. Please use the venue addresses provided with a road map or SatNav to locate specific exhibitions.

Additional Information

Visit the Artweeks website to see, for many exhibitors, further details, artist biographies, additional pictures of artists' work and to check for any changes and updates.

Local Area Trails

Some groups of artists, coordinated by local volunteer organisers, have put together more detailed trail maps to help you navigate from venue to venue. Many of these can be downloaded at www.artweeks.org

All venues have committed to be COVID-secure. As regulations change, please check on-line for updates to each venue's arrangements before travelling. You might also wish to book an appointment at some venues. Also, visit our virtual festival from 1st-23rd at www.artweeks.org

159 Lindsay Viner WOA

Painting, Textiles



Expressive and intuitive paintings and textiles inspired by the natural world.
11am-6pm (Sun 11am-4pm)
Park Farm
Littleworth, SN7 8ED
07876 738341
lindsayviner.wixsite.com/unwind
[/unwindartsandcrafts](https://www.instagram.com/unwindartsandcrafts)
OS | P

15 16 17 18 19 20 21 22 23

162 Chloe Romanos

Jewellery



Designer silver & gold jewellery with gemstones, inspired by archaeological artefacts, faraway places & Art Nouveau.
11am-4pm (Sat/Sun 11-6pm)
Rose Cottage, 26 Bow Road
Stanford in the Vale
SN7 8JB. 01367 718141
www.cloeaejewellery.com
[/cloeaejewellery](https://www.instagram.com/cloeaejewellery)

15 16 17 18 19 20 21 22 23

160 Nigel Edwards

Ceramics, Various



Visit Nigel's studio where he will be working creating ceramics, sculptural and functional works.
1pm-6pm (Sat/Sun 11-5pm)
The Spinney
2 Bakers Square, The Green
Fernham SN7 7NT
01367 820775
nigeledwardsceramicartist.com
[/nigeledwards_ceramic_artist](https://www.instagram.com/nigeledwards_ceramic_artist)
W | OS | R | P

15 16 17 18 19 20 21 22 23

163 Matthew Sheasby

Painting



Animal portraits in oils and acrylics plus some watercolour houses and local buildings. 11am-6pm (Wed/Thu 11-7.30pm)
21 Faringdon Road
Stanford in the Vale
SN7 8NN. 07969 083338
acquireart.co.uk/artists/matthew-sheasby
DS | R | P

15 16 17 18 19 20 21 22 23

Additional Faringdon venue: see page 16

161 Sharon Rich WOA

Sculpture



A garden display of hand-carved stone and stained glass inspired by nature, myth and magic.
11am-6pm or by appointment
Henleaze Farm Bungalow
(B4508 next to Farmer Gow's)
Fernham SN7 7PR
07790 369319
sharonrichsculpture.co.uk
P

15 16 17 18 19 20 21 22 23

164 Studio 10 Various



Beautiful stained glass art, stunning jewellery designs, contemporary ceramics & bespoke wooden creations in a garden studio. 11am-5pm
10 Spencers Close
Stanford in the Vale
SN7 8NG. 01367 718934
klhglassdesigns.co.uk/studio-10
[/studio_10_sivt](https://www.instagram.com/studio_10_sivt)
W | OS | D | R | P

15 16 17 18 19 20 21 22 23

165 Bahar Murphy

Drawing, Painting



Art that is a meeting place for all cultures in which unity is key. Open from 1st by appointment.
11am-6pm
82 Grove Street, Wantage
OX12 7BH
07463 496979
www.baharinteriors.co.uk
[/baharartsinteriordesign](https://www.instagram.com/baharartsinteriordesign)
OS | R

15 16 17 18 19 20 21 22 23

168 Lin Kerr OAS WOA

Painting



Quirky watercolours of scrappy flower arrangements & pot plants and oil paintings of the Ridgeway and Wittenham. 9am-5pm
East Hendred Village Shop, Wisteria House, High Street
East Hendred OX12 8JY
01235 833119
www.linkerrdesign.co.uk
[/linkerrdesign](https://www.instagram.com/linkerrdesign)
R | P | T

15 16 17 18 19 20 21 22 23

166 Patsy Jones

Painting, Printmaking



Art in a tent! Paintings, prints and cards exhibited in a garden setting.
Also open 14th
11am-6pm
8 Bryan Way, Wantage
OX12 7EH
01235 764258
www.patsyjones.co.uk

W | P
15 16 17 18 19 20 21 22 23

169 Pip Stacey

Glass



Bringing nature home: powdered glass techniques on glass.
10am-6pm
Pear Tree Cottage
7 Packhorse Lane
Marcham OX13 6NT
07977 460919
www.featheredglass.com
[/featheredglass](https://www.instagram.com/featheredglass)
W | OS | D | P | T

15 16 17 18 19 20 21 22 23

167 Jill Smith

Painting



Inspired by light & colour local landscapes/other images in various media; prints & cards. Outside display. Also open 14th. Other times by appointment. 11am-6pm
8 Bryan Way
Wantage OX12 7EH
07802 873035
www.jillsmithart.co.uk
[/jillsmithart](https://www.instagram.com/jillsmithart)

15 16 17 18 19 20 21 22 23

170 Sunningwell School of Art

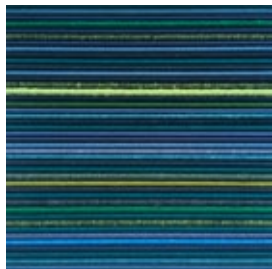
Various



Students of all ages exhibit 2- & 3-dimensional work in a variety of media.
Sat 12.30-6pm, Sun 12-6pm, Mon 12-5pm
The Old School
Sunningwell nr Abingdon
OX13 6RD
01865 730442
www.artschool.org.uk

W | D | R | P | T | NS

1-3 May

171 Amanda Benstead*Various*

Exploring colour, texture, form and feeling through diverse media to make beautiful intriguing things.

11am-6pm

15 Robinson Road
Wootton. OX1 5LE
07920 728872

acbenners@yahoo.com

[/acbenners](https://www.instagram.com/acbenners)

15 16 17 18 19 20 21 22 23

172 Sarah Bond WOA**| Sasha Bond**
Drawing, Painting

Colourful contemporary paintings of mountains, seas, renewable energy & Oxford. Beautiful drawings inspired by an epic UK cycle ride.

11am-5pm

Archangel Studio, 1 Abingdon Road, Cumnor OX2 9QN
07989 393269

www.sarahbondart.com

OS | R | P

15 16 17 18 19 20 21 22 23

173 Sue Side OAS WOA**| David Williams**
Various

Atmospheric inkwork, drawings & etchings. Organic tactile sculpture for outdoor & in. All in an airy studio & garden. 11am-6pm

39 Robsart Place
Cumnor OX2 9QT
07800 867485

www.sueside.com

[/sue.side_artist](https://www.instagram.com/sue.side_artist)

OS | D | R | P

15 16 17 18 19 20 21 22 23

177 Pop Up Arts Collective*Various*

Under One Sky: a diverse group of artists gather to create an arts trail in the garden and beyond.

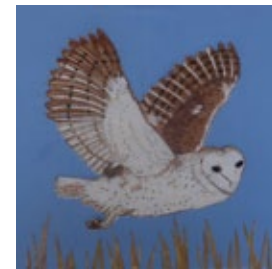
10am-4pm (& Sat 22nd eve by appt)

30 Abbott Rd
Abingdon
OX14 2DU
07890 068768

popupartscollective.co.uk

W | NS

15 16 17 18 19 20 21 22 23

178 Ticia Lever OCG WOA*Textiles*

A variety of bird images worked using both hand and machine stitching.

Also at Peach Croft Barn, venue 176.

10am-4pm
Abingdon County Hall Museum
Market Place
Abingdon OX14 3HG
01235 528115

15 16 17 18 19 20 21 22 23

179 Abbey Group*Ceramics, Painting*

Inspired paintings and creative ceramics by five talented local artists.

10am-5pm

St Nicolas Church
18-19 Market Place
Abingdon
OX14 3JD
07801 742066

dougie.simpson@icloud.com

W

15 16 17 18 19 20 21 22 23

174 Lucy Stopford OAS**| Johannes Von Stumm**
OAS OPC *Various*

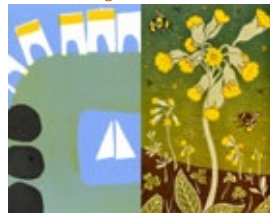
Behind the Curtain of Reality: painting, drawing and sculpture. Email acj@radley.org.uk to make an appointment.

Sewell Centre Gallery
Radley College. OX14 2HR
01235 543039

www.radley.org.uk/sewell-centre-gallery

W | P

15 16 17 18 19 20 21 22 23

175 Susan Wheeler OAS**OPC | Lizzie Wheeler OAS**
Printmaking

Linoprints & monoprints by two professional printmakers in rural village near the Thames path. Tea & cake in garden.

11am-6pm

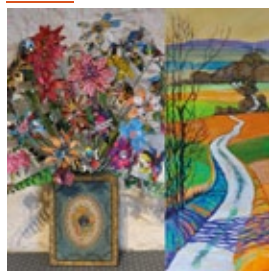
115 Lower Radley
OX14 3BA
07947 500309

susanwheelerprints.co.uk

[/lizziewheelerart](https://www.instagram.com/lizziewheelerart)

W | OS | R | P | T

15 16 17 18 19 20 21 22 23

176 Peach Croft Farm*Artists Various*

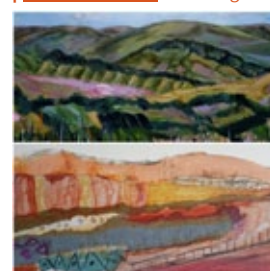
Lively new art in a beautiful old barn. Paintings, ceramics, textiles, silver & jewellery plus an interesting 'Grass Roots' challenge! 10am-5pm

Peach Croft Farm Barn
Twelve Acre Drive
Abingdon OX14 2HP
01235 520936

www.peachcroft.co.uk

W | D | R | P

15 16 17 18 19 20 21 22 23

180 Caroline Harben**| Sandra Hoeft** *Painting*

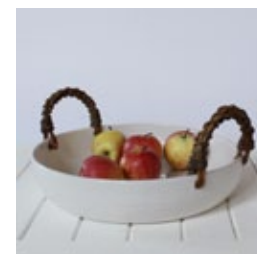
Two artists with differing approaches to landscape: Caroline is a colourist and Sandra is interested in line and shape. 11am-5pm

St Ethelwold's House
30 East St Helen St, Abingdon
OX14 5EB. 01235 555486

www.carolineharbenartist.co.uk

W | R | P

15 16 17 18 19 20 21 22 23

181 Charlotte Storrs*Ceramics*

Functional stoneware, wheel-thrown. Studio in beautiful secret garden close to the Thames. Ceramics displayed in garden gazebo. By appt only: please email/call.

8 The Green, Culham
OX14 4LZ. 07702 099610
charlottestorrs-stoneware.co.uk

[/charlotte.storrs](https://www.instagram.com/charlotte.storrs)

OS | R | P

15 16 17 18 19 20 21 22 23

182 Clare Owen**| Nandi Ablett**
Painting, Pottery

Pottery showing images from nature & influences from around the world. Bird paintings on wood & dog portrait lead plaques.

11am-5pm (Thu/Fri 2-5pm)
42 Little Wittenham Road
Long Wittenham OX14 4QS
01865 407654

clare.owen@arch.ox.ac.uk

15 16 17 18 19 20 21 22 23

183 Sylva Wood Centre*Various*

Stunning wood craft & nature-based art by resident & invited artists. Café. Free parking. Great for all the family.

10am-5pm

Sylva Wood Centre
Little Wittenham Road
Long Wittenham OX14 4QT
01865 408018

www.sylva.org.uk
/sylvawoodschool

W|O|S|D|R|P|T

15 16 17 18 19 20 21 22 23

184 Martin Damen*Wood*

Maker of hand-carved spoons & bowls and regular tutor at the Sylva Wood Centre exhibits traditional & contemporary work. Demos. 10am-5pm

Sylva Wood Centre
Little Wittenham Road
Long Wittenham OX14 4QT
01865 408018

www.martindamen.com

W|O|S|D|R|P|T

15 16 17 18 19 20 21 22 23

185 Liz Gascoigne**| Fi Cooper**
Ceramics, Painting

Contemporary paintings, flow painted imagery, pottery & ceramics in a barn gallery and outside in an ancient orchard. 11am-6pm

The Barn Studio, Clumps Orchard, Little Wittenham OX14 4RE. 01865 407572

www.lizgascoigne-art.co.uk

/makewalkread_ficooper

W|O|S|P

15 16 17 18 19 20 21 22 23

189 Sabine Barber*Drawing, Painting*

Portraits, wildlife, still life & landscapes: a celebration of colour and beauty in oil & pastels.

10am-6pm (Fri 1pm-6pm)

6 Chinnock Brook
Didcot OX11 7XU
07904 216700

www.sabinebarber.com

/beebartartist

OS

15 16 17 18 19 20 21 22 23

190 Prachi Bhatnagar*Painting*

A first-time exhibitor. Come to see colourful, textured & contemporary abstracts & portraits. Tea & cake at weekends.

11am-5pm

12 St Andrew's Road
Didcot OX11 8EW

www.prachi.co.uk

/prachi.painterly

R|P

15 16 17 18 19 20 21 22 23

191 Charlotte Houlihan**OAS**
Painting

Life paintings and studies uncovering the beauty and expression of the human figure. Thoughtful & colourful. Oils & inks. 10am-6pm

The Clubhouse, Boham's Road
Blewbury OX11 9HF
07787 990716

www.charlottehoulihan.com

W|P

15 16 17 18 19 20 21 22 23

186 Brightwell Village Hall**Artists***Mixed Media, Painting*

Vibrant diversity of paintings by several artists in a lovely village hall.

10am-6pm (Sun 10am-5pm)

Stewart Village Hall
West End
Brightwell-cum-Sotwell
OX10 0RY
07747 026363

john.stephen@carabus.me

W|P

15 16 17 18 19 20 21 22 23

187 North Moreton Artists*Various*

Finely-crafted art works including paintings, printmaking, ceramics, wood, rocking horses & jewellery in a beautiful church.

10am-6pm (Sun 11-4pm)

All Saints Church
Wallingford Road
North Moreton OX11 9AT
charlotte.davies@talktalk.net

D|R|P

15 16 17 18 19 20 21 22 23

188 Alice Roberts**| Judith Sheldon OET***Ceramics, Printmaking*

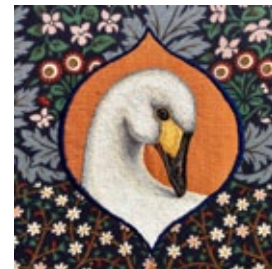
Beautiful lino prints & amazing porcelain buttons by ButtonedUp inspired by South Oxfordshire countryside. 11am-6pm

South Moreton Cottage
Papermill Lane, South Moreton
OX11 9AH. 07765 085547

/alice.fieldings

/buttonedupuk

15 16 17 18 19 20 21 22 23

192 Yvette Phillips*Textiles*

Textile and embroidery artist. Beautiful birds and small mammals, in a rich palette of colours, patterns and textures. 10am-6pm

The Clubhouse, Boham's Road
Blewbury OX11 9HF
07880 700231

www.yvettephillipsart.com

/yvettephillips_art

W|P

15 16 17 18 19 20 21 22 23

193 Eleanor Wong*Painting*

An artist exploring loose and beautiful ways of seeing and imagining the world.

10am-6pm

The Clubhouse
Boham's Road
Blewbury OX11 9HF
07939 231066

www.eleanorwongart.com

/eleanorwongart

W|P

15 16 17 18 19 20 21 22 23

194 Susanna Brunskill*Painting*

Unique colourful original oils, watercolours and prints in a studio set in an attractive cottage garden. Covid secure, so book ahead.

11am-6pm by appointment
Twitten, Aston Street
Aston Tirrold, nr Didcot
OX11 9DQ. 07740 645660

www.susannabrunskill.uk

/susannabrunskillart

OS|P

15 16 17 18 19 20 21 22 23

195 Isobel Pigott
| Mandy Monkcom
Various

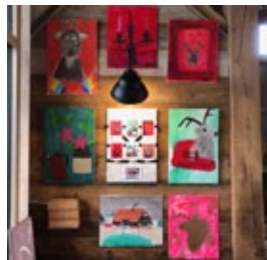
A vibrant & expressive selection of paintings & paper cut outs inspired by local connections & the simple things in life. 11am-6pm
Field View, Aldworth
nr Goring-on-Thames RG8 9SB
07900 128878
www.isobelpigott.co.uk
OS | P

15 16 17 18 19 20 21 22 23

196 Barry Kelly
Painting

A solo exhibition of recent contemporary landscape and seascape painting by a renowned professional artist.
11am-6pm
South Stoke Village Hall
Cross Keys Road
South Stoke RG8 0JT
07702 182770
www.bakelly.co.uk
[/barrykellyartist](https://www.instagram.com/barrykellyartist) W | D

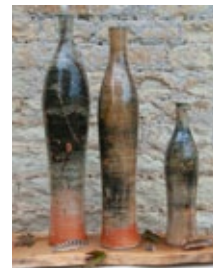
15 16 17 18 19 20 21 22 23

197 The Coaching Barn
Various

An exhibition of work by students and tutors: from mixed media to sculpture by experienced artists.
11am-6pm
Littlestoke Manor Farm
Little Stoke, nr Wallingford
OX10 6AX. 07831 659739
www.thecoachingbarn.com
[/thecoachingbarn](https://www.instagram.com/thecoachingbarn)

W | OS | D | R | P | T

15 16 17 18 19 20 21 22 23

201 Harriet Coleridge OCG
WOA *Ceramics, Wood*

Ceramics for house & garden: tableware, bottles, tiles, tables, chessboards. New: charcuterie & bread boards in elm & walnut. 11am-6pm
Ewelme Pottery, Parsons Lane
Ewelme OX10 6HP
07474 714514
www.harrietcoleridge.co.uk
[/harriet_coleridge_potter](https://www.instagram.com/harriet_coleridge_potter)
OS | D | P

15 16 17 18 19 20 21 22 23

202 Jane Duff OAS WOA
Painting

Landscapes and seascapes of Oxfordshire and Wales. Jane is delighted to be exhibiting at Ewelme pottery for the first time.
11am-6pm
Ewelme Pottery
Parsons Lane, Ewelme
OX10 6HP. 07974 018430
www.janeduff.co.uk
OS | P

15 16 17 18 19 20 21 22 23

203 Mary Lowry OCG
Textiles

Handwoven scarves and shawls in silk, cashmere, wool and linen with vibrant colour and texture.
11am-6pm
Ewelme Pottery, Parsons Lane
Ewelme nr Wallingford
OX10 6HP
01491 836032
www.mary-lowry.com
OS | D | P

15 16 17 18 19 20 21 22 23

198 Denny Webb OAS
Painting

Paintings inspired by nature and country living: a sumptuous feast of colour, texture and design.
2pm-5pm (Sat/Sun 11-5pm)
Boundary House
Crabtree Corner, Ipsden
nr Wallingford OX10 6BN
01491 680942
www.dennywebb.com
[/dennywebb](https://www.instagram.com/dennywebb)
OS | D | R | P | T

15 16 17 18 19 20 21 22 23

199 Debbie Page OCG
WOA *Ceramics*

A hand-building potter fascinated by the moon, fire, smoke & all things ceramic. Check web for times of smoke & raku firing demos.
11am-6pm (Thu 11am-8pm)
Yellow Shed Pottery, Lodge Gate
Cottage, Wood Lane, Kidmore
End RG4 9BB. 07802 347943
[/debbiepageceramics](https://www.instagram.com/debbiepageceramics)
W | OS | D | P

15 16 17 18 19 20 21 22 23

200 Kirsten Jones
Painting

Fresh expressive collaged paintings and prints, all with a story. Runs from 1st-23rd.
10am-5pm
The Chocolate Cafe
13 Thameside
Henley-on-Thames
RG9 1BH
07976 298070
www.kirstenjones.co.uk
[/kirstenjonesart](https://www.instagram.com/kirstenjonesart)

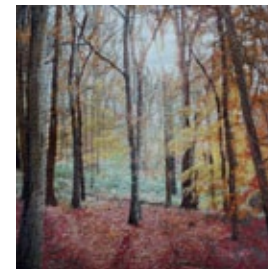
W | R | P

15 16 17 18 19 20 21 22 23

204 John Parrey
Sculpture, Wood

Carved wooden wall sculptures in local oak and boxwood with numbered silver tags.
11am-6pm
Ewelme Pottery, Parsons Lane
Ewelme nr Wallingford
OX10 6HP
01491 836023
www.johnparrey.co.uk
OS | P

15 16 17 18 19 20 21 22 23

205 Debbie Farrell
Textiles

Embroideries of the local Oxfordshire landscape created using free-motion embroidery.
11am-5pm
Chantry House, Nolas Close
Ewelme. OX10 6HG
07957 663807
www.debbiefarrell.co.uk
[/debbiefarrelldesigns](https://www.instagram.com/debbiefarrelldesigns)
R

15 16 17 18 19 20 21 22 23

206 Ayres House Studios
Various

Open studios: visit 11 professional artists and makers at one great central venue! 11am-6pm (Mon/Thu/Sun 11-4pm)
Ayres Yard, Station Road
Wallingford OX10 0JZ
01865 819869
ayreshousestudios.co.uk
[/ayreshousestudios](https://www.instagram.com/ayreshousestudios)
OS | D | P | T

15 16 17 18 19 20 21 22 23

207 Robin McClelland
WOA Ceramics, Sculpture



Handbuilt stoneware ceramics: bottles & flasks, hull shaped forms & architectural sculptural work.
1pm-5pm
Vintner's Lodge
2 Warborough Road
Shillingford OX10 7SA
vintnerslodgeceramics.com
[/robin_mcclelland_potter](https://www.instagram.com/robin_mcclelland_potter)
OS | P

15 16 17 18 19 20 21 22 23

208 Olivia Liberty
| Sophia Stewart Liberty
OAS Mixed Media, Painting



Sisters Olivia and Sophia Stewart-Liberty show framed collages and watercolours.
11am-5pm
66 High Street
Dorchester-on-Thames
OX10 7HN
01865 341486
sophiastewartliberty.com
[/sophiaspaintings](https://www.instagram.com/sophiaspaintings)

15 16 17 18 19 20 21 22 23

209 Tracy Lester
Painting



Impressionistic and colourful oils inspired by nature. Original paintings and cards too.
11am-5pm
Whiteways, 4 Martins Lane
Dorchester-on-Thames
OX10 7JE
07890 384151
www.tracylesterart.com
[/tracylesterart](https://www.instagram.com/tracylesterart)

15 16 17 18 19 20 21 22 23

213 Andy Marlow
| Laura Jane Wylder
Painting, Sculpture



Impressionist/abstract oil and acrylic paintings, together with bronze and stone sculptures.
11am-6pm
Watlington Fine Wines
Ingham Lane
Watlington OX49 5EB
01491 612311
www.andymarlowart.com
www.laurajanewylder.com
P

15 16 17 18 19 20 21 22 23

214 Angela Swan
Textiles



Textiles designed on a hand loom for mass production.
11am-5pm
The Springs
1 Ingham Lane
Watlington
OX49 5EA
01491 612312
angelaswan-weaver.co.uk

OS | D

15 16 17 18 19 20 21 22 23

215 Peter Foster OAS
Sculpture



Sculpture in stone and wood, hand carved in relief and in the round.
11am-6pm
St Edmund Campion Church
2 Watcombe Road
Watlington
OX49 5JQ
01491 612431
pffost@onebillinternet.co.uk
W | D | P

15 16 17 18 19 20 21 22 23

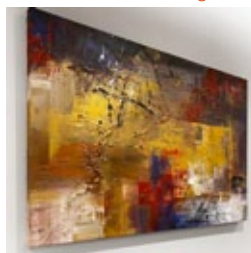
210 Art @ Chalgrove
Various



Bigger than ever with many new artists, creative and unusual art and craftworks in a stunning old church.
10-5pm (Thu 10-7, Sun 1-6pm)
St Mary's Church
Church Lane, Chalgrove
OX44 7SD. 07977 201790
kashpatel101@outlook.com
W | D

15 16 17 18 19 20 21 22 23

211 Claudine Hanks
Mixed Media, Painting



Contemporary abstract canvases including acrylic textured blends, marble effects & realistic animals/ scenes in abstract compositions. 10am-4pm
Blossberry Design
The New Barn, Watcombe Manor
Watlington OX49 5EB
07879 621108
[/clauidines.art](https://www.instagram.com/clauidines.art)
W | OS | P

15 16 17 18 19 20 21 22 23

212 Maxine Macdonald
Ceramics



Handmade ceramics created using slab building, sculpting & wheel-throwing techniques. A celebration of nature, positive energy & earth.
10am-4pm
Blossberry Design, The New Barn
Watcombe Manor, Watlington
OX49 5EB. 07947 696001
www.goodkarmaclay.com
[/goodkarmaclay](https://www.instagram.com/goodkarmaclay) W | P

15 16 17 18 19 20 21 22 23

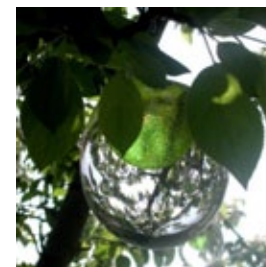
216 Jo Lillywhite
Drawing, Painting



Vibrant & striking landscapes and animals. Inspired by nature's colour palettes.
11am-6pm (Mon/Tues 11am-3pm)
St Edmund Campion Church
2 Watcombe Road
Watlington OX49 5JQ
07880 330697
www.jolillywhiteart.co.uk
[/jolillywhiteart](https://www.instagram.com/jolillywhiteart)

15 16 17 18 19 20 21 22 23

217 Anne Arlidge OCG
Glass



New work, new ideas and some old favourites too.
11am-6pm
27A Couching Street
Watlington
OX49 5QF
01491 599116
www.assendenglass.co.uk

W

15 16 17 18 19 20 21 22 23

218 Kristian Lucas
Furniture, Wood



Creative carpentry using reclaimed materials and rusty relics.
11am-6pm
The Spire and Spoke
21 Hill Road
Watlington
OX49 5AD
[/rustandwoodchips](https://www.instagram.com/rustandwoodchips)

R | P

15 16 17 18 19 20 21 22 23

219 Watlington ArtsHUB*Various*

ArtsHUB is a new community initiative by four local artists based at the Watlington Methodist Chapel offering creative workshops for all. 10am-5pm (Sun 12pm-5pm)

14 Shirburn Street
Watlington OX49 5BT

01491 612801

eddielsercombe@googlemail.com

[/watlington_artshub](https://www.instagram.com/watlington_artshub)
W | O S | D | T

15 16 17 18 19 20 21 22 23

220 Jules Bishop*Various*

Jules Bishop has been working this year with natural pigments from Watlington Parish hedgerows. 10am-5pm (Sun 12pm-5pm)

[@artshub @ Watlington Methodist Church, 14 Shirburn Street
Watlington OX49 5BT
07718 140057](https://www.instagram.com/artshub)

www.julesbishop.com
[/artjules2021](https://www.instagram.com/artjules2021)
D

15 16 17 18 19 20 21 22 23

221 Andrea Brewer*Ceramics, Various*

Beautiful unique hand-built ceramics at the ArtsHUB in Watlington's Methodist Chapel. Artist on site 15-17, 21-23 May. 10am-5pm (Sun 12-5pm)

14 Shirburn Street
Watlington OX49 5BT
01491 612801

www.abceramics.art
[/abceramics.art](https://www.instagram.com/abceramics.art)
W | O S | D

15 16 17 18 19 20 21 22 23

225 Eleanor Meeson*Mixed Media*

A Sense of Place: focusing on Watlington High Street & its characterful buildings, using watercolour & line to capture its essence. 11am-5pm (Sun 12pm-4pm)

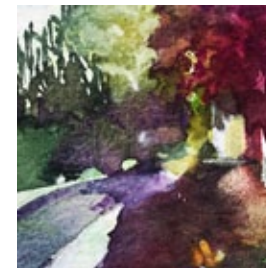
Town Hall, High Street
Watlington, OX49 5PU

07963 525858

eleanor.meeson@sky.com

[/ebm.art](https://www.instagram.com/ebm.art)

15 16 17 18 19 20 21 22 23

226 Marnie Watson*Mixed Media, Painting*

'A Sense of Place: a new body of work exploring Marnie's connection to the Chiltern landscape. 11am-5pm (Sun 12pm-4pm)

Town Hall, High Street
Watlington
OX49 5PU

www.marniewatson.com

[/marniewatsonart](https://www.instagram.com/marniewatsonart)

15 16 17 18 19 20 21 22 23

227 Emma Whyte*Furniture*

Artisan upcycled furniture inspired by the natural world. 11am-5pm (Sun 12pm-4pm)

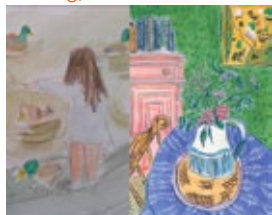
Town Hall
High Street

Watlington
OX49 5PU

07970 700824

www.emmawhyte.co.uk
[/emmawhyte_reloved](https://www.instagram.com/emmawhyte_reloved)

15 16 17 18 19 20 21 22 23

222 Edwina Sercombe**| Jennifer Skene***Painting, Various*

Edwina & Jennifer are artists-in-residence at the ArtsHub Watlington. 10am-5pm

The ArtsHub

Watlington Methodist Church
14 Shirburn Street, Watlington

OX49 5BT. 07939 131457

eddielsercombe@googlemail.com

[/watlington_artshub](https://www.instagram.com/watlington_artshub)

W | O S | D | T

15 16 17 18 19 20 21 22 23

223 Katie Cannon*Painting*

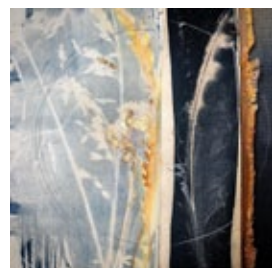
A Sense of Place: scenic acrylic paintings inspired by a love of the Oxfordshire countryside and Cornish coastline. 11am-5pm (Sun 12pm-4pm)

Town Hall, High Street
Watlington OX49 5PU

katiecannonart@mail.com

[/katiecannonart](https://www.instagram.com/katiecannonart)

15 16 17 18 19 20 21 22 23

224 Jaine McCormack*Various*

A Sense of Place: a mixed media vertical landscape explored at home in the Chiltern woods during lockdown. 11am-5pm (Sun 12pm-4pm)

Town Hall, High Street
Watlington OX49 5PU

07776 136561

www.jainemccormack.co.uk

[/jainemcc.art](https://www.instagram.com/jainemcc.art)
D | R

15 16 17 18 19 20 21 22 23

228 Margaret Peach*Painting*

Landscapes and townscapes painted locally and beyond, and portraits from life. 11am-1pm & 2pm-5pm

Robinson Sherston

1 High Street, Watlington

OX49 5PH

01491 614892

margaret.b.peach@btinternet.com

W

15 16 17 18 19 20 21 22 23

229 Mark Lord*Photography, Printmaking*

Quirky & distinctive lino prints of kitchenalia & celebrating Marks's home county of Cornwall. 11am-4pm

The Orange Bakery, 10 High St

Watlington OX49 5PS

07971 093423

www.linolord.com

[/linolordpress](https://www.instagram.com/linolordpress)

D

15 16 17 18 19 20 21 22 23

230 Jessica Lucy Adams**| Lily Rossiter***Various*

Earthy hand-made ceramics, whimsical paper cut illustrations, handwoven fabrics & natural dyed yarns. 11am-6pm

11 High Street

Watlington OX49 5PZ

07900 694079

lilyrossiter@hotmail.com

jessicaladams@live.co.uk

15 16 17 18 19 20 21 22 23

231 Harriet Riddell
| Kathrin Stalder

Various



An intriguing combination of live performance portrait stitching and a handsewn community art installation. 10am-5pm

12 High Street
Watlington OX49 5PY
07511 510698

www.institchyou.com

[/institchyou](https://www.instagram.com/institchyou)

W | O | S | D | T

15 16 17 18 19 20 21 22 23

232 John Nuttgens
| Vanessa Relf

Ceramics



John and Vanessa show their recent collaborations in slipware ceramics. 9am-5pm

The Granary Deli
16 High Street
Watlington
OX49 5PY
07903 124531

www.idlecombepottery.com

15 16 17 18 19 20 21 22 23

233 Laurence Norman

Painting



Laurence Norman is a portrait artist working in oils using bold marks & colours. 9am-5pm

18 High Street
Watlington
OX49 5PY
07773 603282

laurencenormanart.co.uk

[/laurencenormanartist](https://www.instagram.com/laurencenormanartist)

W | R

15 16 17 18 19 20 21 22 23

237 Andrew Kerr

Photography



A photographic essay capturing a rural blacksmiths yard and a local garage. Andrew is a member of the Watlington Photographers' Collective. 12pm-6pm

Watlington Club
20 High Street
Watlington OX49 5PY
07961 351241

andrewkerrphotography.org

[/andrewkerrphotography](https://www.instagram.com/andrewkerrphotography)

R

15 16 17 18 19 20 21 22 23

238 Mark Lord

Photography



Images of local master craftspeople in the Watlington area. 12pm-6pm

Watlington Club
High Street
Watlington
OX49 5PY
07971 093423

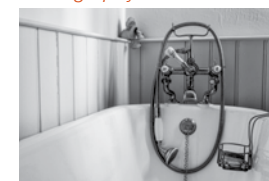
marklordphotography.co.uk

[/marklordphoto](https://www.instagram.com/marklordphoto)

15 16 17 18 19 20 21 22 23

239 Dee Robinson

Photography



Two collections of still life, one bursting with colour the other black and white, both influenced by lockdown. 12pm-6pm

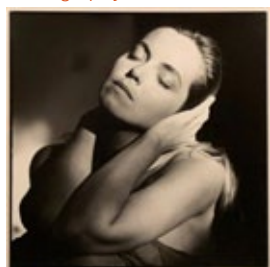
Watlington Club
20 High Street
Watlington OX49 5PY
deidreronsonphotography.com
[/deerobinson5](https://www.instagram.com/deerobinson5)

W | R

15 16 17 18 19 20 21 22 23

234 Robert Barber

Photography



When they were Younger: photographic portraits of well-known people from the 1980s & 1990s. 12pm-6pm

Watlington Club, 20 High Street
Watlington OX49 5PY
01491 614431

rb@robertbarberphotography.co.uk

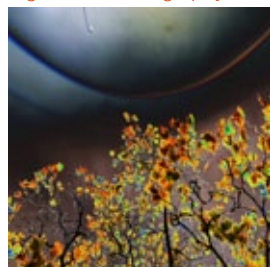
[/robertbarberphotography](https://www.instagram.com/robertbarberphotography)

W | P

15 16 17 18 19 20 21 22 23

235 John Hailstone

Digital Art, Photography



2020: The Year in Hindsight on Instagram. Part of Watlington Photographers Collective. 12pm-6pm

Watlington Club, 20 High Street
Watlington OX49 5PY
07723 726101

www.granizo.co.uk

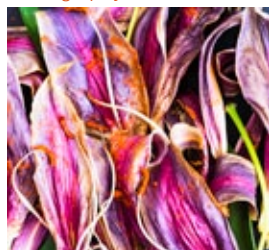
[/john.granizophotography](https://www.instagram.com/john.granizophotography)

W | P

15 16 17 18 19 20 21 22 23

236 Caroline Hyman

Photography



Still life images of the natural cycle of plants creating vivid tapestries in their design. 12pm-6pm

Watlington Club
20 High Street
Watlington
OX49 5PY
01491 638321

carolinehymanphotos.co.uk

15 16 17 18 19 20 21 22 23

240 Jocasta Shakespeare

Mixed Media



Fabulous Japanese Gyotaku fish art. 10am-6pm

23 High Street
Watlington
OX49 5PY
07967 759119

jocasta.shakespeare@gmail.com

[/jocastaartoninsta](https://www.instagram.com/jocastaartoninsta)

O | S

15 16 17 18 19 20 21 22 23

241 Steph Hicks

Painting



Foraging & nature illustrations highlighting the beauty of the plants, fungi and creatures found on our doorstep. Tue/Thu/Fri 10-12pm, 2-4pm (Sat 10-12pm, 2-5pm: Sun 12-5pm)

Watlington Library, High Street
Watlington OX49 5PZ
07534 940787

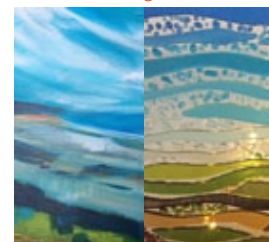
[/drawntothewilduk](https://www.instagram.com/drawntothewilduk)

W

15 16 17 18 19 20 21 22 23

242 Fatmagul Aaltonen

| Rachel Gill
Glass, Painting



Semi-abstract landscape paintings and decorative glass for home and garden. 11am-6pm (Sat/Sun 11-5pm)

1 Old School Place
Gorwell
Watlington OX49 5QH
07748 961761

www.sparkling-glass.com

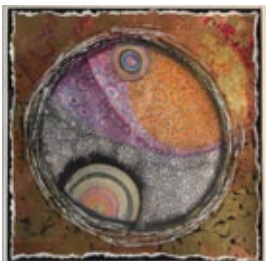
[/fatmagulla](https://www.instagram.com/fatmagulla)

W | R | P

15 16 17 18 19 20 21 22 23

243 Sallie Sayers

Mixed Media



Mixed media paintings and sculptures exploring the world around us.

11am-6pm (Sat/Sun 11-5pm)
1 Old School Place

Gorwell
Watlington
OX49 5QH
07714 402287
sallie.sayers@outlook.com

W|R|P

15 16 17 18 19 20 21 22 23

244 Jane Slemeck

Mixed Media, Painting



Abstract and original creations using multi-media and acrylic paintings.

11am-6pm (Sat/Sun 11-5pm)
1 Old School Place

Gorwell
Watlington
OX49 5QH
07967 162378

www.soul-pathways.co

W|P

15 16 17 18 19 20 21 22 23

245 Karen Higgs

Mixed Media, Textiles



Textile artwork including mixed media.

11am-6pm
21 Church Street

Watlington
OX49 5QR
07989 133798
karen.e.higgs2019@hotmail.com

com
/karen.higgs.artandtextiles
OS

15 16 17 18 19 20 21 22 23

249 Satnam Bains

Ceramics, Glass, Sculpture



Satnam creates 2D & 3D art pieces: handmade forms and textures from stoneware clay, glass & glazes.

11am-6pm (Sun 12pm-6pm)
St Leonard's Church off Pyrton Lane, Watlington OX49 5AJ
07798 534522

www.satnambains.art
/satnambains.art

W|R|P

15 16 17 18 19 20 21 22 23

250 Susie Bidgood WOA

Ceramics



Original contemporary ceramic pieces. Each unique item is decorated with vibrant colours or earthy hues and textures.

11am-6pm (Sun 12pm-6pm)
St Leonard's Church off Pyrton Lane, Watlington OX49 5LX
07771 926267

susiebidgood@gmail.com
/susiebidgoodceramics

W|R|P

15 16 17 18 19 20 21 22 23

251 Julie Grose OCG

Sculpture



Garden sculpture on display at St Leonard's Church (and forging demonstrations at ArtSHUB, venue 219).

11am-6pm
St Leonard's Church off Pyrton Lane, Watlington
OX49 5LX
07960 192475

juliegrosemetaldesign.co.uk

D|T

15 16 17 18 19 20 21 22 23

246 Nigel Sheppard

Ceramics



An approach to ceramics that is constantly evolving: classic shapes combined with an understanding of how to use colour to maximum effect.

11am-5pm
42 Chapel Street, Watlington
OX49 5QT. 07775 656836
nigel@bubble-solutions.com

/nigelssheppard
OS

15 16 17 18 19 20 21 22 23

247 St Leonard's Church

Art Various

New Venue 247



A group of seven local artists show ceramics, drawing, mixed media & painting from still life to landscape.

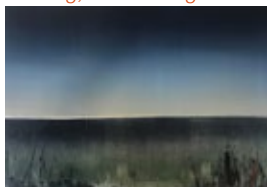
11am-6pm (Sun 12pm-6pm)
St Leonard's Church
off Pyrton Lane, Watlington
OX49 5AJ. 07798 534522

st.leonards.church@satnambains.art
/st.leonards.church.art
W|D|R|P

15 16 17 18 19 20 21 22 23

248 Frances Ackland-Snow

Painting, Printmaking



Frances' passion is that arts heals for both artist and viewer.

11am-6pm (Sun 12pm-6pm)
St Leonards Church
off Pyrton Lane
Watlington
OX49 5AJ
07511 521385

creativemindsconsultancy.co.uk
/creativemindsconsultancy

W|R|P

15 16 17 18 19 20 21 22 23

252 Stephen Pawlyn

Jane Pawlyn

Painting, Wood



Jane and Stephen will be exhibiting their paintings together with cards of their work printed in house.

10am-5pm
Two Ways, 8 Cuxham Road
Watlington, OX49 5JW
01491 612530

sandjapawlyn@gmail.com

OS|P

15 16 17 18 19 20 21 22 23

253 Jeffery Courtney

Painting



Jeffery aims to convey the underlying stillness present in those special moments of awakened connection with the beauty of creation.

11am-5pm (Fri 2pm-8pm)
Woodman Cottage
Pishill, nr Henley-on-Thames
RG9 6HJ
01491 639470

www.courtneyart.net

OS|P

15 16 17 18 19 20 21 22 23

254 Jane White

Jackie Hughes

Ceramics, Painting



Two exciting contemporary artists specialising in ceramics & painting in a stunning location in the Chilterns. Also at venue 232. 11am-5pm (Fri 11-8pm, Sun 11-4pm)

The Old Dairy Studio Pottery,
Turville Park Farm, Turville Heath
RG9 6LB. 01491 638742

www.janewhiteceramics.com

W|OS|P

15 16 17 18 19 20 21 22 23

255 John Nuttgens**| Vanessa Relf**
Ceramics, Pottery

A creative partnership in ceramics, combining traditional skills to produce work which reflects the environment. Artists on site. 10am-5pm
Idlecombe Pottery, Holloway Lane,
Turville RG9 6QU
07903 124531

www.idlecombepottery.com
W | O S | D | P

15 16 17 18 19 20 21 22 23

256 Gerry Coles OAS*Printmaking*

Beautiful bold colourful linocuts of British countryside, wildlife & seasons. Prints & greetings cards for sale.
11am-5pm (Thu 2pm-7pm)

The Stables
Red Lion Farmhouse
Stoke Talmage nr Thame
OX9 7ES. 07875 753709
www.gerrycolesprints.co.uk
[/gerrycolesprints](https://www.instagram.com/gerrycolesprints)
O S | D | R | P

15 16 17 18 19 20 21 22 23

257 Graham Lester OCG*Various*

A colourful collection of stunning paper sculpture and turned art from reclaimed materials.
10.30am-5.30pm (Sun 11-4pm)

fitch & fellows
18 Buttermarket
Thame OX9 3EP
07967 229118
www.grahamlester.co.uk
[/grahamlesterstudio](https://www.instagram.com/grahamlesterstudio)

15 16 17 18 19 20 21 22 23

261 Helen MacRitchie**OCG** *Textiles*

Contemporary felting and embroidered textiles: unique handbags, accessories and hangings. 11am-5pm (Sun 10-4pm; & Thu 5-8pm by appt)

Meadow House
Park Farm
Waterstock OX33 1JT
01865 655861
helenmacritchiedesigns.com
O S | P

15 16 17 18 19 20 21 22 23

262 Jane Hanson OCG*Pottery*

Colourfully-glazed stoneware pottery. Studio in the garden opposite the church.
11am-6pm

Church Farmyard
Waterstock
OX33 1JR
01844 339733
janepots@gmail.com

W | O S | R | P

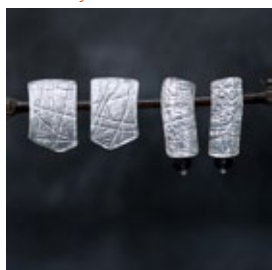
15 16 17 18 19 20 21 22 23

263 Lilian Shaw*Glass*

Traditional skills used to create commissions for ecclesiastical, civic & domestic locations.
10am-6pm

Waterperry Gardens
Waterperry OX33 1LA
07870 140743
lilianpshaw@gmail.com
[/lilianpshaw](https://www.instagram.com/lilianpshaw)
W | O S | D | R | P | T

15 16 17 18 19 20 21 22 23

258 Kate Wilkinson OCG*Jewellery*

Textured & recycled silver statement jewellery often using contrasting materials such as cork, climbing cord & semi-precious beads.
10.30-5.30pm (Sun 11-4pm)
fitch & fellows, 18 Buttermarket
Thame OX9 3EP
07720 291521

katewilkinsonjewellery.com
[/katewilkinsonjewellery/](https://www.instagram.com/katewilkinsonjewellery/)

15 16 17 18 19 20 21 22 23

259 Janine Philips*Painting*

Oil paintings inspired by coasts & landscapes exploring colour, texture & light from the representational to abstraction. Also open 1st, 2nd, 8th & 9th. By appt: pls call/message

24 Queens Road, Thame
OX9 3NQ. 07443 958359
www.janinephilips.co.uk
[/janine_philips](https://www.instagram.com/janine_philips)

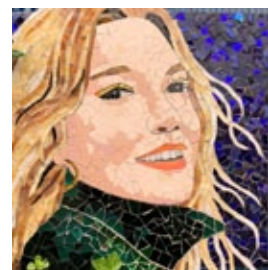
15 16 17 18 19 20 21 22 23

260 BLAM*Furniture, Wood*

Hardwood furniture & sculptural pieces made to commission. Finished items, work in progress and two friendly furniture makers.
By appointment. Pls call/email.
1 The Camp Industrial Estate
Rycote Lane, Milton Common
OX9 2NP. 01844 278978

www.blam.uk
W | O S | P

15 16 17 18 19 20 21 22 23

264 Becky Paton*Mosaics*

Mosaicist extraordinaire, specialising in portraiture, wearable art and more!
11am-5pm

55 High Street
Wheatley OX33 1XT
07725 626234
www.beckymosaics.co.uk
[/beckypatonmosaics](https://www.instagram.com/beckypatonmosaics)

O S

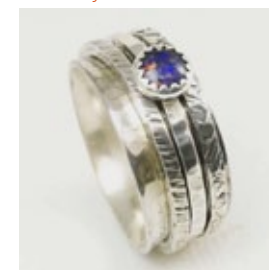
15 16 17 18 19 20 21 22 23

265 Jackie Birchall OET*Stained Glass*

Tiffany-method stained glass. Original unique designs for indoors & out, displayed in cottage garden & gallery.
11am-5pm

Ambrose Cottage
Holton OX33 1PS
07773 623973
www.purpleurchin.online
[/purple_urchin_](https://www.instagram.com/purple_urchin_)
D | P

15 16 17 18 19 20 21 22 23

266 Liz Dee*Jewellery*

Handcrafted silver jewellery with semi-precious stones & pearls. Commissions taken for wearable kids art, handwriting & keepsake jewellery.
11am-5pm

Ambrose Cottage
Holton OX33 1PS
07971 189344
[/thesilverworkshop](https://www.instagram.com/thesilverworkshop)
D | P

15 16 17 18 19 20 21 22 23

267 Jeanne Jackson OCG
Ceramics



Exotic birds and insects adorn handmade pots. Studio in cottage garden.
11am-6pm
Shepherds Cottage
2 Blenheim Road
Horspath
OX331RY
07765 289693
www.jeannejackson.co.uk

OS | D | R | P | T

15 16 17 18 19 20 21 22 23

268 Melissa Orrom Swan
WOA
Various



Studio & garden: including wire sculpture, printmaking, fibre art & seabutton jewellery. Inspired by the sea, journeys & creatures.
11am-6pm (Wed 11am-4pm)
31 College Way, Horspath
OX33 1SQ. 01865 874532
melissaorromswan.co.uk

OS | P

15 16 17 18 19 20 21 22 23

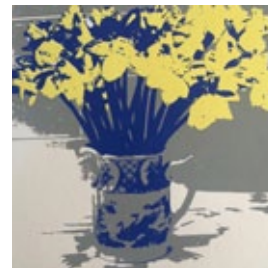
269 Nicko King
Patricia Bower
Rosie Endors
Ceramics, Painting



Quirky ceramic figures and water colours, local images and from further afield.
12pm-5pm
St Mary's Church
South End
Garsington OX44 9DH
/nicko.king
W | P

15 16 17 18 19 20 21 22 23

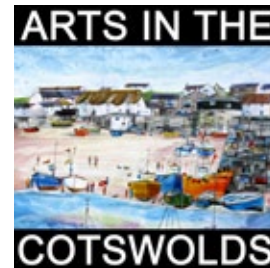
271 Artists at St Mary's
Various



Fifteen artists present work in various styles & media: drawing, painting, printmaking, textiles & more.
Virtual exhibition only.
Available on-line all hours.
07906 595731
artweeks.org/festival/2021/artists-st-marys
annholland24@btinternet.com

1-23 May

272 Arts in the Cotswolds
Various



Seven talented artists present on-line exhibitions & events for Artweeks. Enjoy ceramics, painting & textiles.
Virtual exhibition only.
Available on-line all hours.
artweeks.org/festival/2021/arts-cotswolds
/arts_in_the_cotswolds
/artsinthecotswolds

1-23 May

273 Deborah Astles
Ceramics



Hand-built original ceramic pieces created in Oxford. Virtual exhibition only.
Available on-line all hours.
Collection postcode OX3 8DX
07768 205711
artweeks.org/artist-profiles/2021/deborah-astles
deb.astles68@gmail.com
/debintheshed.ceramics

1-23 May

270 Gaerse Dun Art Group
Various

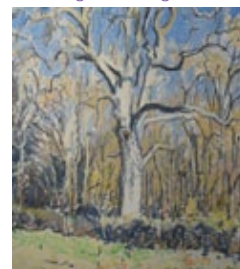


A small community group: local artists' work including painting, pottery, printmaking, photography, textiles & an intriguing kaleidoscope.
11am-6pm
St Mary's Church
Southend
Garsington OX44 9DH

W | D | R | NS

15 16 17 18 19 20 21 22 23

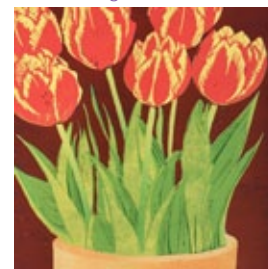
274 John Blandy
Drawing, Painting



Plein-air pastel painter working in Wytham Woods and along Seacourt Stream.
Virtual exhibition only.
Available on-line all hours.
07957 282688
artweeks.org/artist-profiles/2021/john-blandy
www.johnblandy.co.uk
/john2art

1-23 May

275 Barbara Calderwood
Printmaking



Limited edition hand-pulled linocut and Japanese vinyl block prints.
Virtual exhibition only.
Available on-line all hours.
Collection postcode OX9 2DQ. 01844 261817
artweeks.org/artist-profiles/2021/barbara-calderwood
barbaracalderwood@icloud.com
/linobarbz

1-23 May

276 Clare Carswell
Various



Garden Books: artists books made during lockdown reflecting on self-confinement, isolation and the inspiration of home and garden.
Virtual exhibition only.
Available on-line all hours.
Collection postcode SN6 8JH. 07769 723328
artweeks.org/artist-profiles/2021/clare-carswell
www.clarecarswellstudio.com

1-23 May

277 Caroline Chappell

Painting



Abstract and semi-abstract paintings inspired by the landscape. Virtual exhibition only. Available on-line all hours. Collection postcode OX7 5HQ. 01608 645444 artweeks.org/artist-profiles/2021/caroline-chappell www.carolinechappell.co.uk [/carolinechappellart](https://www.instagram.com/carolinechappellart)

1-23 May

280 Ella Clocksin

Painting



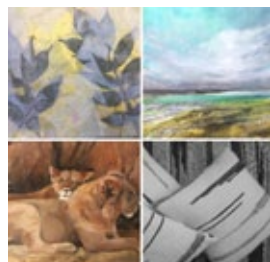
Contemporary painting in ancient woodland, birdsong included. Colourful contemplative abstracts in watercolour & mixed media. Virtual exhibition only. Available on-line all hours. Collection postcode OX3 8NS. 01865 766263 artweeks.org/artist-profiles/2021/ella-clocksins www.ellaclocksins.com [/ellaclocksins_artist_studio](https://www.instagram.com/ellaclocksins_artist_studio)

T

1-23 May

278 Charlbury St Mary's Church Group

Various



Now a REAL exhibition in large airy & covid-secure church: new work, weaving, printmaking & painting. Virtual exhibition all hours. 11am-6pm, Sun 12-5pm St Mary's Church Church Lane Charlbury OX7 3PX [/cathrynjeff](https://www.instagram.com/cathrynjeff)

1 2 3 4 5 6 7 8 9

279 Melanie Charles

Painting



Wonderfully-whacky bold and bright animal paintings created in garden studio. Fun quirky pictures to brighten any home! Virtual exhibition only. Available on-line all hours. Collection postcode CV35 0TU. 07803 598444 artweeks.org/artist-profiles/2021/melanie-charles [melaniecharlesartist.co.uk](https://www.instagram.com/melaniecharlesartist) [/melaniecharlesartist](https://www.instagram.com/melaniecharlesartist)

1-23 May

282 Ian Fraser OCG

Ceramics

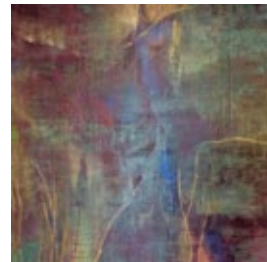


Beautiful raku and other low-fire ceramics. Virtual exhibition only. Available on-line all hours. Collection postcode OX2 9PQ. 07711 083232 artweeks.org/artist-profiles/2021/ian-fraser-ocg [/ianfraserceramics](https://www.instagram.com/ianfraserceramics)

1-23 May

283 Jane Greer

Painting

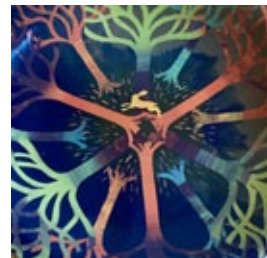


Oil paintings of memories, both real and imagined, distorted with time. Colourful large & small works depicting people, still life & decorative pieces. Virtual exhibition only. Available on-line all hours. Collection postcode OX20 1UF. 07901 893760 artweeks.org/artist-profiles/2021/jane-greer www.janegreer.com

1-23 May

286 Jo Marshall

Ceramics, Pottery



Beautiful unusual handmade colourful stoneware ceramics. Virtual exhibition only. Available on-line all hours. Collection postcode OX12 0AX. 07769 570822 artweeks.org/artist-profiles/2021/jo-marshall [moonhareceramics.co.uk](https://www.instagram.com/moonhareceramics) [/jodillonmarshallpotter](https://www.instagram.com/jodillonmarshallpotter)

1-23 May

284 Barbara Harrison

Caban Painting



Works on canvas & paper using acrylic & gouache paints. Colourful large & small works depicting people, still life & decorative pieces. Virtual: all hours. Collection postcode OX2 7LS. 01865 554555 artweeks.org/artist-profiles/2021/barbara-harrison-caban www.studiolop.com [/studiolop](https://www.instagram.com/studiolop)

1-23 May

287 Valerie Mead OCG

Jewellery

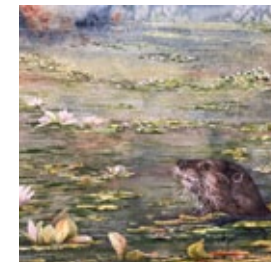


Contemporary handmade jewellery designs in silver & coloured golds. Virtual exhibition/ by appointment if allowed. Available on-line all hours. Collection from The Edith Road Workshops OX1 4QB. 01865 240809 artweeks.org/artist-profiles/2021/valerie-mead-ocg www.valeriemead.co.uk

1-23 May

285 Ronny Loxton

Painting



Acrylic & watercolour paintings from nature. Virtual exhibition only. Available on-line all hours. Collection postcode OX15 6ET. 07882 205347 artweeks.org/artist-profiles/2021/ronny-loxton www.ronnyloxton.com [/ronnyloxton](https://www.instagram.com/ronnyloxton)

T

1-23 May

288 Caroline Meynell

Painting



Landscapes and seascapes that evoke a sense of space, light and stillness. Virtual exhibition only. Available on-line all hours. Collection postcode OX44 7NT. 07762 380827 artweeks.org/artist-profiles/2021/caroline-meynell www.carolinemeynell.co.uk [/carolinemeynell](https://www.instagram.com/carolinemeynell)

1-23 May

289 Oxford Bury Knowle Art Group

Mixed Media, Painting



OBKAG is a friendly group of people that meet once a month, currently via Zoom. They welcome new members. Virtual exhibition only. Available on-line all hours. artweeks.org/festival/2021/oxford-bury-knowle-art-group oxfordburyknowleartgroup.co.uk

NS 1-23 May

292 Oxfordshire Chinese Brush Painting Group

Painting



A celebration of Chinese Brush Painting in all its styles on paper and silk. Virtual exhibition only. Available on-line all hours. artweeks.org/festival/2021/oxfordshire-chinese-brush-painting-group www.cbpxon.home.blog

1-23 May

290 Oxford Ikebana Study Group

Miscellaneous



OISG's usual one-day celebration of fresh flowers is online with a retrospective view of the last 10 years of Artweeks exhibitions. Virtual exhibition only. Available on-line all hours. 01865 748365 artweeks.org/festival/2021/oxford-ikebana-study-group [/OxfordIkebana](https://twitter.com/OxfordIkebana)

NS 1-23 May

293 Tara Parker-Woolway OAS

Painting



A riot of joyous colour awaits you in Tara's studio. Original acrylic paintings, pastel paintings on slate, cards & prints. Virtual exhibition only. Available on-line all hours. Collection postcode SN6 8JG. 07796 696077 artweeks.org/artist-profiles/2021/tara-parker-woolway-oas [/parkerwoolwayartist](https://twitter.com/parkerwoolwayartist)

1-23 May

291 Oxford Photographers Photography



A group exhibition by local photographers covering a range of genres. Virtual exhibition only. Available on-line all hours. 07940 994399 artweeks.org/festival/2021/oxford-photographers oxfordphotographers.org [/oxfordphotographers](https://twitter.com/oxfordphotographers)

NS 1-23 May

294 Jacky Radbone WOA

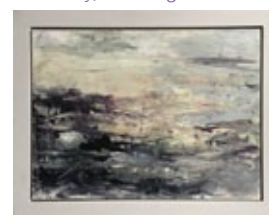
Painting



Impressionist oil paintings painted both on location & in a cosy studio. Also handwoven items. Virtual exhibition only. Available on-line all hours. Collection postcode OX7 3NL 01608 676540 artweeks.org/artist-profiles/2021/jacky-radbone-woa jackyradbone.vpweb.co.uk [/jackyradbone](https://twitter.com/jackyradbone)

1-23 May

295 Lesley Reeves Jewellery, Painting



Oil and mixed media paintings, charcoal drawings, watercolours. Gold and argentium jewellery. Virtual exhibition only. Available on-line all hours. Collection postcode OX2 9QT artweeks.org/artist-profiles/2021/lesley-reeves www.lesleyreeves.com

1-23 May

298 Lucy Jade Sylvester Jewellery



Jewellery inspired by countryside and coastlines in gold and silver with a scattering of stones. Virtual exhibition only. Available on-line all hours. Collection postcode OX17 3RR. 07989 436458 artweeks.org/artist-profiles/2021/lucy-jade-sylvester-jewellery www.lucysylvester.co.uk/ [/lovefromengland](https://twitter.com/lovefromengland)

1-23 May

296 Claire Christie Sadler OAS

Drawing



Drawings, including work inspired by light on West Coast of Scotland landscapes. Virtual exhibition only. Available on-line all hours. Collection postcode OX2 7EP. 07968 231173 artweeks.org/artist-profiles/2021/claire-christie-sadler-oas www.clairecsadler.co.uk

1-23 May

299 The Motherhood Photography Workshops

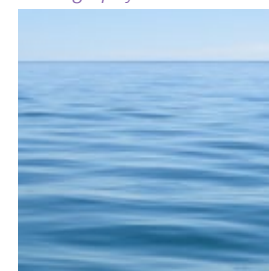
Photography



Exploring everyday moments captured from the mothers' perspective. Virtual exhibition only. Available on-line all hours. artweeks.org/festival/2021/motherhood-photography-workshops philippajamesphotography.com [/motherhoodworkshops](https://twitter.com/motherhoodworkshops)

1-23 May

297 Gordon Stokes Photography



Photography of coasts and Oxfordshire. Frames prints & cards. Contact via website. Virtual exhibition only. Available all-hours on-line. Collection from The Edith Road Workshops Oxford OX1 4QB. 01865 240809 artweeks.org/artist-profiles/2021/gordon-stokes www.gordonstokes.co.uk

T 1-23 May

300 Lorraine Turley

Painting



Lorraine is a Scottish artist based in Oxford. Her paintings are from imagination and memories. Virtual exhibition only. Available on-line all hours. Collection postcode OX3 8AH artweeks.org/artist-profiles/2021/lorraine-turley www.lorraineturley.com [/lorraineturleyartist](https://twitter.com/lorraineturleyartist)

1-23 May

301 Rose Wallace CPA

Ceramics, Sculpture



Inspired by discarded domestic ephemera & plastic packaging. Traditional 'Staffordshire Flatbacks' focusing on contemporary consumerism. Virtual exhibition only. Available on-line all hours. Collection postcode OX4 1EJ. 07732 343666 artweeks.org/artist-profiles/2021/rose-wallace-cpa rosewallaceceramics.co.uk [/roseceramicartist](https://www.instagram.com/roseceramicartist)

1-23 May

302 Tricia Wormald

Painting, Various



Fusion: an online exhibition of paintings merging eastern and western traditions. Virtual exhibition only. Available on-line all hours. Collection postcode OX14 2DA artweeks.org/artist-profiles/2021/tricia-wormald ocbp.art@gmail.com

1-23 May

303 Bruce Wright

Painting



Watercolours, some oils. Impressionist scenes of life in our local area. Virtual exhibition only. Available on-line all hours. Collection postcode OX4 2PB 07969 802409 artweeks.org/artist-profiles/2021/bruce-wright www.bwright.co.uk [/brucewrightart](https://www.instagram.com/brucewrightart)

1-23 May

Artist call out: interested in taking part next year? ARE YOU:

A passionate artist or designer-maker who is keen to share your skills and your story and inspire others?

An emerging artist looking to build your profile?

An enthusiastic amateur who'd like to develop your art with feedback and sales?

A seasoned professional looking for contacts, commissions and a bigger market?

Many full time artists including glass artist **Wendy Newhofer** and sculptor **Chris Townsend** took their first steps to becoming a professional artist with an Artweeks exhibition.

'I am enormously grateful to Oxfordshire Artweeks which enabled me, as a beginner, to share my work with the public. The positive feedback I got on my first Artweeks exhibition encouraged me to go on working and making. Without Artweeks, I don't think I would have had the courage to launch myself as a professional jeweller.'

Leonie Bennett



'I found out in my first year as a member of Artweeks that it is more than just showing work in one's studio: it is about contact with people, recognition by the public and being seen regularly so people become familiar with one's work. Being part of Artweeks led me to other places in that first year as a full time artist and I have now exhibited further afield on the strength of the confidence Artweeks gave me.' **Robert Strange**

Look out for Artweeks **TAKING PART** events in the autumn to hear more and ask questions. You can choose to exhibit from home, or find a local artist group/venue. Then register for membership of Oxfordshire Artweeks and submit exhibition details as either an individual artist or as part of a group from October. All details and payments must be submitted by **31st December**.

www.artweeks.org/artists



From top, clockwise: Nicola Kantorowicz, Gill Heaton; Karen Joy, Nicola Durrant, Alison Bell, Paul Minter, Jane Peart.

Index of exhibiting artists

Most of the artists listed are exhibiting both in a venue and on-line. A 'v' indicates a virtual exhibition only. Some artists are not shown within these pages: for additional artists & exhibitions visit www.artweeks.org

Aaltonen, Fatmagul	242
Abbott, Jane	13
Ablett, Nandi	182
Ackland-Snow, Frances	248
Adams, Jessica Lucy	230
Adlington, Kit	176
Alcock, Aini	v
Allender, Elaine	101
Allison, Lalage	143
Allison, Louise	64
Angus, Julian	183
Arlidge, Anne	217
Armitage, Pamela	91
Astles, Deborah	273 v
Atkins, Rosemary	15
Avery, Susan	120
Bains, Satnam	249
Banerji, Sara	81
Barber, Robert	234
Barber, Sabine	189
Basilevitch, Sophie	90
Baxter, Jenny	45
Beatson Wood, Angela	112
Beaugrand, Celine	64
Beek, Martin	91
Belcher, Lee	278 v
Bell, Alison	10
Bell, Margot	7
Bennett, Leonie	127
Benning, Julia	176

Benstead, Amanda	171
Berger, Judith	12, 132
Berger, Michael	12, 132
Berrett, Alison	51
Bhatnagar, Prachi	190
Bicknell, Maggie	124
Bidgood, Susie	250
Binnie, Catherine	23
Birchall, Jackie	265
Bishop, Jules	219, 220
Blackmore, Daniel	57
Blakey, Gabriella	12
Blanchard, Alison	149
Blandy, John	274 v
Blaxland, Mary	183
Blenkinsop, Tess	v
Bond, Cally	34
Bond, Sarah	172
Bond, Sasha	172
Bowen, Dylan	61
Bower, Patricia	269
Boyle, Marie	64
Bradley, Jackie	v
Brewer, Andrea	219, 221
Brodrigg, Catriona	187
Brooke, Anna	113
Brouder, Alan	106
Brown, David	64
Brunskill, Susanna	194
Buckle, Alexandra	64
Buick, Michael	183
Burniston, Kerry	31
Butterfield, Neil	155
Byrne, Jennifer	109
Calderwood, Barbara	275 v
Campbell, Eleanor	17
Cannon, Katie	223
Cardinal von Widdern, Alexandra	176

Carswell, Clare	276 v
Casley, Emmett	68
Chappell, Caroline	13, 277 v
Charles, Melanie	272 v, 279 v
Christie-Miller, Elizabeth	247
Clarke, Toni	91
Clay, Mark	69
Clayton, JC	v
Clifford, Wendy	27
Clocksins, Ella	280 v
Clutton-Brock, Eleanor	v
Coker, Kate	v
Colchester, Jill	20
Cole, Julian	12
Coleman-Jones, Emma	v
Coleridge, Harriet	201
Coles, Gerry	256
Collier, Charlie	10
Collier, John	8
Collins, Marjorie	v
Coon, Bobbie	271 v
Cooney, Siobhan	140
Cooper, Anita	278 v
Cooper, Fi	185
Cordova, Veronica	210
Cormack, Felicity	91
Coulter, Lizzie	2
Courtney, Jeffery	253
Crane, Jane	27
Crawford, Ann	1
Croft, Tom	151
Cronin, Rachel	5
Cross, Claire	179
Cross, Janet	150
Cross, Jo	64
Crowson, Neville	48
Croxson, Kathryn	79
Cumming, Vicky	152
Daggitt, Steve	271 v

Dain, Anthony	183
Damen, Martin	183, 184
Darby, Sarah	45
Davies, Charlie	187
Davis, Emma	84
de Waard, Machi	176
Dearlove, Valerie Anne	186
Dee, Liz	266
Dickson, Emma	206
Dioszegi, Aniko	206
Dixon, Jo	v
Dixon, Liz	2
Dorrity, Sally	97
Doughty, Sue	143
Dove, Phillip	156
Drew, Ben	40
Drew, Sue	40
Drinkwater, Claire	187
Dromgoole, Julia	126
Ducker, Rachel	122
Duda-Szot, Matti	141
Duff, Jane	202
Duffy, Ros	53
Dunford Wood, Elly	10
Dunkley, Janet	210
Durrant, Nicola	10
Eadon, Jenny	3
Eagle, Harriet	110
Edwards, Nigel	160
Endsor, Rosie	269
Engelhardt, Julia	45
Enser, Fleur	63
Evans, Martha	24
Fairfax-Cholmeley, Rosie	v
Farrands, Bridget	98
Farrands, Rob	95
Farrell, Debbie	205
Feurtado, Stuart	64, 210
Filipek, Monika	v

Fletcher, Nigel	11
Foreman, Neil	247
Forster, Tim	106
Forsyth, Erin May	62
Foster, Peter	215
Frank, Dianne	145
Fraser, Ian	282 v
Freeman, Patricia	27, 142
French, Karen	136
Friedemann, Trish	271 v
Frishberg, Tam	146
Fulljames, Penelope	13
Fyfe-Jackson, Claire	30
Fyvie, Pam	59
Galewski, Bernard	80
Ganney, Susan	v
Gascoigne, Liz	185
Ge_workshop	206
George, Susan	v
Gibbons, Kay	v
Gibbs, Paul	186
Gill, Andy	10
Gill, Rachel	242
Gillespie, Maureen	13, 64
Gledhill, Stacey	89
Glynne Jones, Antonia	136
Goddard, Victoria	v
Gold, Di	29
Goodman, Juliet	206
Goonewardene, Karen	206
Grandy, John	100
Green, Jill	78
Greene, Michele	64
Greer, Jane	283 v
Griffiths, Jane	6
Griffiths, Rob	104
Grose, Julie	251
Gussin, Judith	12, 132, 143
Gye, David	114

Gye, Jane	114
Hailstone, John	235
Hainsworth, Jane	147
Hall, Darren	39
Hallam, Rose	132
Hamilton, James	271 v
Hamilton, Nic	271 v
Hanks, Claudine	211
Hanner Hopwood, Sarah	136,
	137
Hanson, Jane	12, 262
Harben, Caroline	180
Hardyman, Robyn	12, 138
Harker, Dominic	143
Harrison Caban, Barbara	284 v
Harvey, Carol	13, 16
Heaton, Gill	64
Helliwell, Ed	91
Heinrich, Susanne	v
Helliwell, Ed	
Henwood, Colin	183
Hicks, Steph	241
Higgs, Karen	245
Highway, Sharon	272 v
Hill, Sheri	v
Hill, Sue	176
Hinton, Kevin	56
Hipkiss, Kate	67
Hoeft, Sandra	180
Hogg, Ali	70
Hogg, Jane	70
Holland, Ann	271 v
Holmans, Alison	53, 187
Holuj, Kirsteen	12
Hope, Jane	86
Hopton, Catriona	v
Horton, Margaret	179
Houghton, Ben	164
Houghton, Kerry	164

Houlihan, Charlotte	191	Lenman, Angela	186	Meynell, Caroline	288 v	Paddon, Lisa	v	Redhead, Rowena	210	Shuckburgh, Pip	47
Howard-Saunders, Josh	260	Lester, Graham	257	Miller, Barry	64	Page, Debbie	45, 199	Redman, Philippa	83	Side, Sue	173
Hughes, Jackie	254	Lester, Tracy	209	Miller, Issy	72	Palmer, Guen	36	Rees, Stephen	183	Simmons, Anya	272 v
Hyman, Caroline	236	Levell, Sally	94	Miller, Miranda	72	Parimi, Jyoti	136, 210	Reeves, Lesley	136, 295 v	Simpson, Dougie	179
Ifill, Julie	v	Lever, Ticia	176, 178	Mills, Marian	247	Parker, Jessica	49	Relf, Vanessa	232, 255	Skene, Jennifer	219, 222
Illingworth, Richard	183	Lewis, Gareth	183	Minter, Paul	176	Parker-Woolway, Tara	293 v	Rhys, Morna	94	Slemeck, Jane	244
Irving, Rodas	183	Liberty, Olivia	208	Monkcom, Mandy	195	Parrey, John	204	Rich, Sharon	161	Smith, Jill	167
Jackson, Jeanne	12, 267	Lillywhite, Jo	216	Morgan, Jonathan	116	Parrott, David	91	Richardson, Janet	176	Smith, Sarah	v
Jackson-Houlston, CM	176	Lines, Jenny	31	Morgans, Becky	103	Patel, Bharat	113	Riddell, Harriet	231	Smith, Sue	76
James, Trudi	176	Loken, Julia	54	Morris, Alison	157	Patel, Kashmira	113, 210	Riley, David	v	Somerfield, Jean	130
Jamieson, Kay	136	Lord, Mark	229, 238	Morton, Chrissy	164	Paton, Becky	264	Riley, Les	64	Sorrell, Julia	33
Jaquet, Cherry	153	Lowry, Mary	203	Moser, Jane	158	Pawlyn, Jane	252	Ritson, Caroline	176	Soskice, Alison	113
Jeff, Cathryn	278 v	Loxton, Ronny	285 v	Mostyn, Casimira	64	Pawlyn, Stephen	252	Roberts, Alice	188	Sotkiewicz, Julia	113
Jones, Kirsten	200	Lucas, Kristian	218	Moxley, Susan	133	Paxton, Kristina	206	Robinson, Dee	239	Souter, Emma	206
Jones, Patsy	166	Lula James	183	Muir, Philippa	91	Payne, Barbara	176	Robinson, Jim	210	Sparling, Maureen	25
Joy, Karen	64, 210	Macdonald, Anne	53	Munby, Teresa	117	Payne, Judith	186	Romanos, Chloe	99, 162	Spencer, Sally	176
Kantorowicz, Nicola	v	Macdonald, Maxine	212	Murphy, Bahar	165	Payne, Rebekah	115	Rossiter, Lily	230	Spokes, Challoner	58
Kazimierczuk, Elaine	73, 139	Mack Smith, Sophie	106	Murphy, Laura	206	Peach, Margaret	228	Rowlands, Judith	176	Stacey, Pip	169
Kelly, Barry	196	MacRitchie, Helen	261	Naidoo, Nimmi	78	Peart, Jane	v	Sadler, Claire Christie	296 v	Stagg, Selma	12
Kelly, Jane	91	Madoc	11	Newbery, Elizabeth	74	Peeters, Vital	144	Sanders, Ian	33	Stalder, Kathrin	231
Kenner, Rahima	91	Mann, Lis	272 v	Newell, Peter C	v	Perryman, Graham	64	Sargeant, Ushma	v	Stanbury, Nelly	113
Keown, Tamzin	62	Mant, Graham	12	Newhofer, Wendy	128	Petts, Valerie	121	Sawano, Takahi	v	Staniforth, Michelle	210
Kerr, Andrew	237	Marcus, Annia	12, 132	Nicholas, Jacquie	304 (p14)	Philips, Janine	259	Sayers, Sallie	243	Staples, Sabine	247
Kerr, Lin	168, 186	Markham, Miranda	64	Nixon, Caroline	45	Phillips, Nicholas	92	Schaumloffel, Silvi	42, 45	Stapleton, Jackie	18
Kimminau-Jobling, Sally	64	Marlow, Andy	213	Noble, Graeme	148	Phillips, Yvette	192	Searby, Louise	35	Stephen, John	186
Kinch, Cliff	9	Marlow, Charlotte	143	Norman, Laurence	233	Philp, Heather	91	Seaton, John	45	Stephens, Richard	271 v
King, Nicko	269	Marsden, Chase	119	Norris, Philippa	12, 143	Phipps, Rosie	136	Sercombe, Edwina	219, 222	Stern, Sally	64
King-Salter, John Luke	71	Marshall, Jo	286 v	North, William	66	Pigott, Isobel	195	Shakespeare, Francesca	135	Stewart Liberty, Sophia	208
Kirkham, Elizabeth	271 v	Martis, Anne	64	Nuttgens, John	232, 255	Pilgrim, Lynn	271 v	Shakespeare, Jocasta	240	Stillwell, Jane	10
Knapp, Jon	210	McClelland, Robin	207	Nye, Yolande	206	Pollock, David	26	Sheasby, Matthew	163	Stokes, Colin	183
Knight, Faye	45, 46	McCormack, Jaine	224	O'Brien, Jane	v	Potier, Hazel	91	Sheldon, Judith	188	Stokes, Gordon	297 v
Kozarzewska, Magda	206	McNicoll, James	148	Ogborne, Julia	45	Powell, Tessa	247	Shepherd, Thomas	271 v	Stopford, Lucy	174
Laidlaw, Deborah	111	Mead, Valerie	287 v	Organ, Ken	91	Powell, Valerie	247	Sheppard, Nigel	246	Storrs, Charlotte	181
Landell Mills, Cathy	129	Meara, Rosemary	271 v	Orr, Charlotte	271 v	Pullan, Kate	206	Sherlaw-Johnson, Rachael	31	Stroke of a Brush	64
Lathar, Kamal	136	McChoote, Ruta	v	Orrom Swan, Melissa	268	Pulvertaft, Sarah	22	Sherlaw-Johnson, Rebecca	31	Strother, Jane	107
Lawson, Briony	28	Meeson, Eleanor	225	Oruč Whiston, Lila	141	Radbone, Jacky	13, 294 v	Shires Studio	183	Stuart-Hamilton, Clova	123
Leaver, Jane	64	Megaw, Harry	186	Owen, Clare	182	Rand Bell, Zanna	12	Shock, Katherine	142	Studdert, Elizabeth	64
Leech, Charlotte	179	Meinhold-Morgan, Hannelore	v	Owen, Marion	179	Read, Cathy	64	Shrimpton, Peter	55	Surman, Amy	113

Swan, Angela	214	Weinstock, Sue	154
Sylva Foundation	183	Wheatley, Bridget	93
Sylvester, Lucy Jade	298 v	Wheeler, Lizzie	175
Taylor, Martin	65	Wheeler, Susan	175
Taylor, Morag	65	White, Eric	52
Teper, Danielle	271 v	White, Helen	72
Terry, Claire	136	White, Jane	254
The Cooper School	64	Whitehouse, Paul	210
Thomson, Tony	125	Whiting, Phil	96
Tomlinson, Jane	50	Whitmore, Athol	v
Tomlinson, Paul	50	Whittington, Gilly	108
Townley, Alison	32	Wryte, Emma	227
Townsend, Christopher	37	Wilkinson, Jan	12
Tremaine, Dawn	64	Wilkinson, Kate	258
Trewavas, Marjolein	44	Williams, David	173
Tucker, Rosemary	271 v	Williams, Deborah	72
Tucker, Sue	278 v	Williams, Harry	260
Turley, Lorraine	300 v	Wilson, Robin	v
Turner, David	10	Wong, Eleanor	193
Turner, Ronald	272 v	Woolner, Helen	v
Ureta, Freya	v	Wormald, Tricia	302 v
Varley, Penny	272 v	Wright, Bruce	303 v
Vickery, Hannah	45	Wrottesley, Michael	187
Vickery, Nic	13, 38	Wykes, Jean	271 v
Viner, Lindsay	159	Wylder, Laura Jane	213
von Stumm, Johannes	174	Yarrow, Judith	13, 14
Walden, Robin	v	<div> <p>Most of the artists listed are exhibiting both in a venue and on-line. A 'v' indicates a virtual exhibition only. Some artists are not shown within these pages:for additional artists & exhibitions visit www.artweeks.org</p> </div>	
Walker, Alice	v		
Walker, Andrew J	72		
Wallace, Rose	301 v		
Wallington, Michele	43		
Walton, Leigh	247		
Ward, Victoria	164		
Warren, Ann	136		
Waterfield, Elizabeth	272 v		
Watson, Marnie	226		
Wattam, Marcus	72		
Webb, Denny	198		

Gallery and business exhibitions	
a+b Furniture	v
BLAM	260
Haptic Art at Abingdon Museum	
	178
Gallery 1plus5	118
Oxford Printmakers Co-op (OPC)	
	82
Sculpture at Kingham Lodge	19
Stanford University	80
The Heseltine Gallery	v
The Jam Factory	75
The Mill Arts Centre	4
Group exhibitions	
Abbey Group	179
Art @ Chalgrove	210
Art at St Andrew's	113
Artists at St Mary's	271 v
Arts in the Cotswolds	272 v
Ayres House Studios	206
Bicester Art Network	64
Brightwell Village Hall Artists	186
Charlbury St Mary's Church	
Group	278 v
CN Arts & Chipping Norton	
Theatre	13
Complins Close Crafts OCG	132
Grey Cat Studio	31
New Hinksey Arts	91
North Moreton Artists	187
OCG and Friends	12
Peach Croft Farm Artists	176
St Leonard's Church Art	247
Studio 10	164
Sylva Wood Centre	183

The Blandford Avenue Marquee	143
The Museum of Modern Art in	
Sibford	10
The Spice of Life	136
Watlington ArtsHUB	219
West Ox Arts	45
wocART	72
Community exhibitions	
ArtWorks School Of Art	88
Bowley House	60
CouCou Curates	21
Drew School of Ceramics	41
Fairfield Residential Care Home	281 v
Gaerse Dun Art Group	270
Magdalen Road Studios	85
OVADA	77
Oxford Bury Knowle Art Group	289 v
Oxford Ikebana Study Group	290 v
Oxford Photographers	291 v
Oxfordshire Chinese Brush	
Painting Group	292 v
Pop Up Arts Collective	177
St Mary and St John Primary	
School	87
St Mary's Church Barton	105
Sunningwell School of Art	170
The Coaching Barn	197
The Motherhood Photography	
Workshops	299 v
Westbury People's Gallery	102
Wycliffe Hall College	131

Most of the artists listed are exhibiting both in a venue and on-line. A 'v' indicates a virtual exhibition only. Some artists are not shown within these pages:for additional artists & exhibitions visit www.artweeks.org



BEAUTIFUL ART DESERVES
OXFORDSHIRE'S FINEST DESIGN

OX MAGAZINE is the biggest, best-looking and most astute regional title covering Oxfordshire, with cutting edge editorial, in-depth features and a truly beautiful layout.

Covering the very best of Oxford's art, dining, culture, society and business, OX Magazine is the premier publication for those who enjoy the finer things in life. Click our logo, and get OX delivered straight to your inbox.

OX
MAGAZINE

WE ARE DELIGHTED ONCE AGAIN TO SUPPORT OXFORDSHIRE'S LARGEST VISUAL ARTS FESTIVAL – THE INCREDIBLE INITIATIVE THAT IS OXFORDSHIRE ARTWEEKS.



oxmag.co.uk

To advertise or enquire, 01235 856300

A WARM WELCOME TO: THE HENLEY ON THAMES SCHOOL OF ART



We're still here & we may be **MIGHTIER** than ever!!

Well, who amongst us hasn't had a huge knock over the last year? The **encouraging** news is we gathered up all that was great about being a **small, independent Art School** and we took it **online!** So, if you fancy a spot of **creative distraction**, you'd like to **learn an artistic skill** or you'd just like to create amongst **like-minded folk** - why not join us?

If online isn't for you, we get it, it's really not for everyone. We're incredibly happy to say that we have plans to **open up the Studio** from June, for a Summer School of Workshops including; **Jewellery-making, Mosaics, Calligraphy, Drawing classes, Life Drawing** & so much more...

Have a look at our Website and sign up to our mailing list for more info:

www.thehenleyschoolofart.com

Designers Guild is proud
to support
Oxfordshire
Artweeks



Available
throughout
Oxfordshire
including

Griffin Interiors
01235 847135

Anne Haines
Interiors
01491 411424

Style Infusion
01993 832031

The Curtain Shop
01865 553405

Stella Mannering
& Company
01993 870599

Lucy Harrison
Interiors
07791 248339



DESIGNERS GUILD

fabric | wallpaper | paint | furniture | accessories

[designersguild.com](https://www.designersguild.com)

DESIGNERS GUILD is a registered trademark of Designers Guild Ltd. © DESIGNERS GUILD 2021