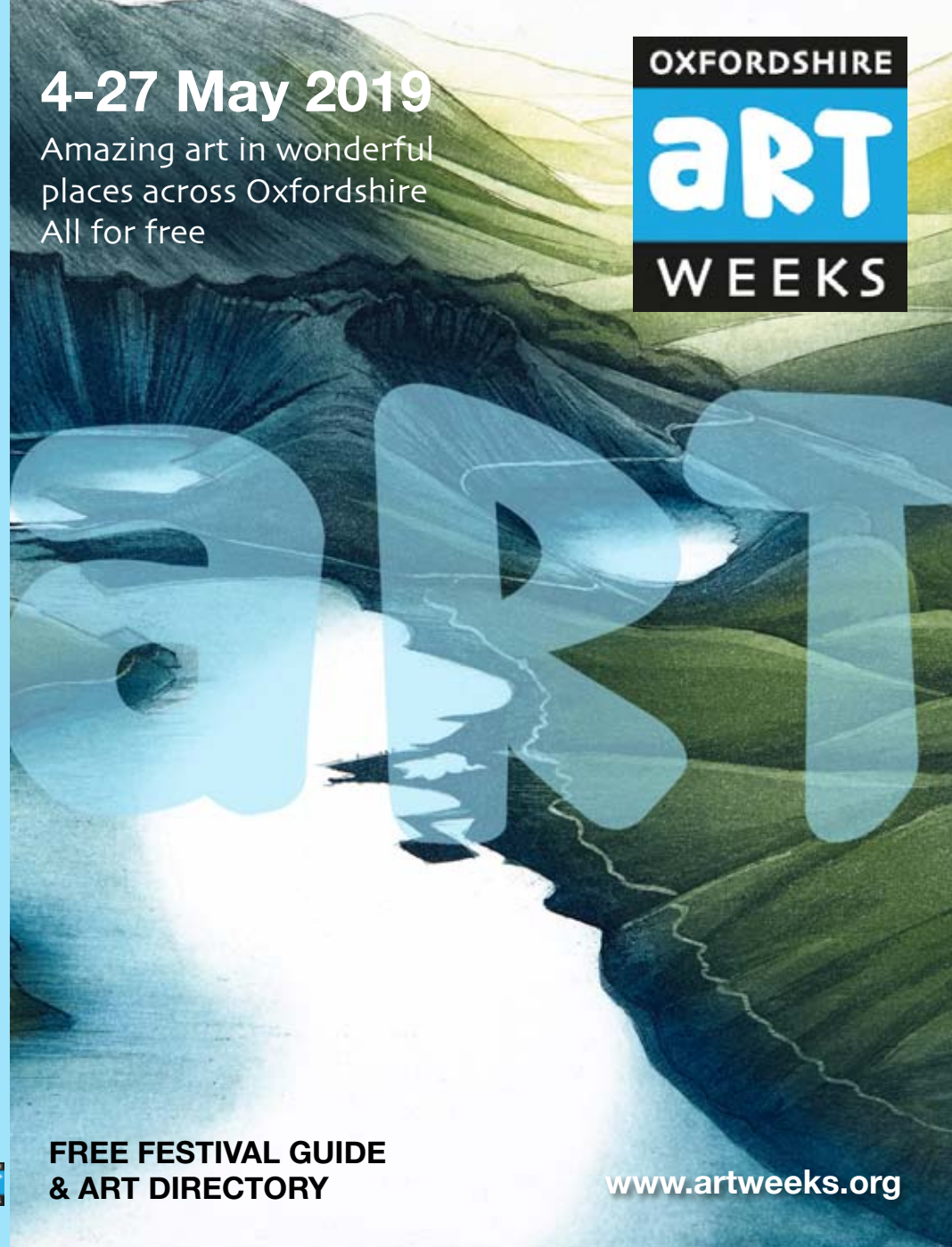


4-27 May 2019

Amazing art in wonderful
places across Oxfordshire
All for free



**FREE FESTIVAL GUIDE
& ART DIRECTORY**

www.artweeks.org



Touching the Earth

Paintings by Addy Gardner & Sculpture by Martin Smith
Curated by Jenny Blyth

7 May - 1 June 2019

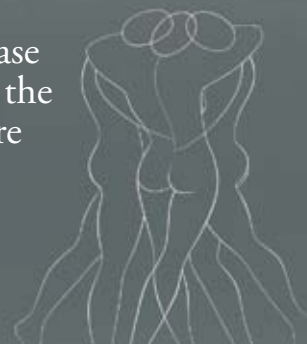


The North Wall, South Parade, Oxford OX2 7JN



At Ease
with the
Figure

ESTHER LAFFERTY



The deliberate and conscious wearing of clothing is a part of human behaviour and culture that artists have long sought to strip away in order to uncover what lies underneath, to show the soul of both people and society in their representations of the body, whether that's godly chiselled musculature, sumptuous voluptuous beauty, the vulnerability of human flesh or existential angst.

32 | OX MAGAZINE | FEBRUARY 2019

BEAUTIFUL ART DESERVES OXFORDSHIRE'S FINEST DESIGN

OX MAGAZINE is the biggest, best-looking and most astute regional title covering Oxfordshire, with cutting edge editorial, in-depth features and a truly beautiful layout.

Covering the very best in Oxford's art, dining, culture, society and business, OX Magazine is the premier publication for those who enjoy the finer things in life. You can find OX Magazine in Oxfordshire newsagents, as well as in hotels, theatres and venues across the county.

OX
MAGAZINE

WE ARE DELIGHTED ONCE AGAIN TO SUPPORT OXFORDSHIRE'S LARGEST VISUAL ARTS FESTIVAL – THE INCREDIBLE INITIATIVE THAT IS OXFORDSHIRE ARTWEEKS.

Artweeks is a not-for-profit organisation and relies upon the generous support of many people to whom we're most grateful as we bring this celebration of the visual arts to you. These include:

Patrons: Will Gompertz, Mark Haddon, Janina Ramirez

Board members: Anna Dillon, Wendy Newhofer, Hannah Newton (Chair), David Pollock, Susan Williamson, Robin Wilson and Caroline Harben.

Volunteer area coordinators: Rachel Ducker, Jo Lilywhite, Rahima Kenner, Susan Moxley, Marieke O'Connor, Tara Parker-Woolway, Graham Perryman, Francesca Shakespeare, Jill Smith, Dougie Simpson, Philippa Stacey, Jane Tomlinson, Andrew Wildman, & Helen White.

And all those other individuals and collaborating organisations who have helped make Artweeks a success including Loraine Berkshire, Janet Brown, Jill Colchester, David Cotterell, Designers Guild, Kate Hipkiss, Stuart Lafferty, Jaine McCormack, Melissa Orrom Swan, Jill Rayner, Richard Shock, Jane Strother, Alun Ward, Appleton Christmas Barn, Cornerstone Arts Centre, Experience Oxfordshire, Modern Art Oxford, OUP, OX magazine, Oxfordshire Library Service, The Jam Factory, The Mill Banbury, The North Wall, The Oxford Times, The Oxfordshire Museum and many others.



Our cover image this year is an etching by Morna Rhys, exhibiting in Iffley Village, Oxford (venue 131) and shows Llyn Ladaw, or Shining Waters. A printmaker for over twenty years, Morna's etchings are inspired by the wonderful wild British landscape and this year, in a historic 18th century basement gallery, you can enjoy her expressive landscapes, large botanical etchings and small magical glimpses of the natural world alongside the work of two other artists.



Bee Thomas venue 240

To participate in **Artweeks 2020** (2-25 May) please register by **31st December 2019**.

For more about taking part, see page 6.

Oxfordshire Artweeks 2019

Welcome to the 37th Oxfordshire Artweeks festival during which you can see, for free, amazing art in hundreds of wonderful places, in artists' homes and studios, along village trails and city streets, in galleries and gardens across the county. It is your chance, whether a seasoned art enthusiast or an interested newcomer, to enjoy art in a relaxed way, to meet the makers and see their creative talent in action.

Browse the listings and the accompanying website where you'll find hundreds of examples of artists' work, and pick the exhibitions that most appeal to you: from the traditional to the contemporary, and with drawing to printmaking, furniture to fashion, silverware, sculpture, mosaics and more, there's masses to explore. We hope you enjoy exploring Artweeks, and that you are inspired by the pieces on show and find some treasures to take home with you.

If you would like to hear from us with our suggestions about where to find interesting art locally and what's on throughout the year, you can sign up for our monthly newsletter at www.artweeks.org/newsletter

Esther Lafferty Festival Director
Jo Golding Administrator

Oxfordshire Artweeks, 8 Hazel Road, Oxford OX2 9LF
01865 865596

artweeks@artweeks.org

 @OxonArtweeks

 OxfordshireArtweeks



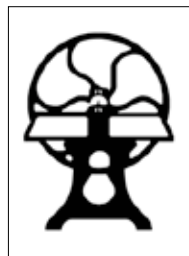
The Oxford Art Society was founded in 1891 and is an umbrella for accomplished artists with diverse and exciting styles living in Oxfordshire, many of whom also exhibit nationally or internationally. We hold regular exhibitions, and welcome submissions towards membership at our annual Open Exhibition. Look for the initials **OAS** in this guide to find members' work. For more information visit www.oxfordartsociety.co.uk



The Oxfordshire Craft Guild draws together designer-makers representing a wide range of traditional and contemporary crafts, and holds temporary and permanent exhibitions throughout the county. Membership, which is by selection, is a sign of the finest design ability and highest quality craftsmanship. Look out for the initials **OCG** in this guide to find Guild Members' work. For further information go to www.ocg.co.uk or www.facebook.com/oxfordshirecraftguild.



West Ox Arts is a lively association of artists and art enthusiasts, many of whom take part in exhibitions alongside artists invited from across the UK. Our Gallery is an inspiring, light-filled venue that sells a wide range of contemporary, high quality art and offers various workshops, demonstrations and special events throughout the year. We are situated in the first floor of Bampton's Town Hall in the Market Square. For more information or to become a member of **WOA** visit www.westoxarts.com. You can also find us on facebook at www.facebook.com/westoxarts



Oxford Printmakers Co-operative (OPC) has been running for over 40 years and is an open access Fine Art Print workshop offering a high standard of printmaking facilities. It currently has 100 members many of whom are professional artists exhibiting in the UK and abroad. As well as holding regular exhibitions, OPC runs courses in many of the print processes: such as linocut & woodcut, wood engraving, etching, monoprinting, screenprinting, collagraphy and stone lithography. These courses are open to anyone with an interest in printmaking. OPC also offers different membership options for accessing workshop facilities and equipment, and new members are always welcome. Look for the initials **OPC** in this guide to find members work. For more information go to: www.oxfordprintmakers.co.uk

Key to abbreviations

Wheelchair access	W
Open Studio	OS
Demonstrations	D
Refreshments	R
Teacher	T
Parking	P
Non-selling	NS

Oxford Art Society **OAS**

Oxfordshire Craft Guild **OCG**

Oxford Printmakers Co-op **OPC**

West Oxfordshire Arts **WOA**



Bridget Wheatley (venue 120)

Oxford City: Sat 4 – Sun 12 May	21
Wytham & Wolvercote	22
Summertown	24
Jericho and city centre	30, 46
Headington	34
East Oxford	37
Temple Cowley & Iffley	42
South Oxford	44
West Oxford & Botley	48
South Oxfordshire: Sat 11 – Sun 19 May	51
Cumnor to Faringdon	52
Wantage & villages	55
Abingdon & villages	58
Didcot & villages	62
Wallingford, Henley & Watlington	64
Wheatley, Thame & villages	73
North Oxfordshire: Sat 18 – Mon 27 May	79
Burford	80
Bampton	81
Witney to Eynsham	85
Kidlington	87
Bicester & villages	88
Woodstock	90
Charlbury	92
Chadlington, Chipping Norton & villages	96
Banbury & villages	101
Index of artists	106
Index of galleries and large group exhibitions	111

Although the majority of venues within each Artweeks region open only during their regional dates, you'll find some artists exhibiting for a longer period of time. Browse the listings to take advantage of these additional days or use our search facility at artweeks.org/festival/search

Artist call out: interested in taking part next year? **ARE YOU:**

A passionate artist or designer-maker who is keen to share your skills and your story and inspire others?

An emerging artist looking to build your profile?

An enthusiastic amateur who'd like to develop your art with feedback and sales?

A seasoned professional looking for contacts, commissions and a bigger market?

Many full time artists including glass artist **Wendy Newhofer** and sculptor **Chris Townsend** and took their first steps to becoming a professional artist with an Artweeks exhibition.

'I am enormously grateful to Oxfordshire Artweeks which enabled me, as a beginner, to share my work with the public. The positive feedback I got on my first Artweeks exhibition encouraged me to go on working and making. Without Artweeks, I don't think I would have had the courage to launch myself as a professional jeweller.'

Leonie Bennett



'I found out in my first year as a member of Artweeks that it is more than just showing work in one's studio: it is about contact with people, recognition by the public and being seen regularly so people become familiar with one's work. Being part of Artweeks led me to other places in that first year as a full time artist and I have now exhibited further afield on the strength of the confidence Artweeks gave me.' **Robert Strange**

Look out for Artweeks **TAKING PART** events in the autumn to hear more and ask questions. You can choose to exhibit from home, or find a local artist group/venue. Then register for membership of Oxfordshire Artweeks and submit exhibition details as either an individual artist or as part of a group from October. All details and payments must be submitted by **31st December**.

www.artweeks.org/artists



be you

**Independent education
for boys aged 4-18**

Abingdon School: 01235 849041

Abingdon Prep School: 01865 391570

abingdon.org.uk

Bursaries available up to 100% of fees



ABINGDON

THE SUNDAY TIMES
**SCHOOLS
GUIDE
2019**

**SOUTHEAST
INDEPENDENT
SECONDARY
SCHOOL
OF THE YEAR**



MAGDALEN COLLEGE SCHOOL
INDEPENDENT DAY SCHOOL FOR BOYS 7 - 18 AND SIXTH FORM GIRLS



DRAMA, MUSIC, ART & SPORT FOR ALL School Open Days

Junior School: Friday 21 June 2019, 9.30 to 11.00am

Senior School: Tuesday 25 June 2019, 2.30 to 4.30pm

Visit mcsoxford.org/opendays to book

A whirlwind of culture and creativity in Oxford!

**OXFORD
FESTIVAL**
of the **ARTS**

**FRIDAY 21 JUNE
- SATURDAY 7 JULY 2019**



'Refuge' by Martin Cash, as part of sculpture trail in the Rose Garden at Magdalen College School.

[@artsfestivaloxford](https://www.facebook.com/artsfestivaloxford)

[@artsfestoxford](https://twitter.com/artsfestoxford)

[@artsfestivaloxford](https://www.instagram.com/artsfestivaloxford)

Box Office: 01865 305305
www.artsfestivaloxford.org

HANDMADE
Oxford

THE INTERNATIONAL CONTEMPORARY ARTS FESTIVAL

Meet | Shop | Learn | Engage | Eat | Drink | Explore

Craft

Fine Art / Print

Photography

Sculpture

Slow Design

Artisan Food

Workshops

Demonstrations

27 – 30 June 2019

Waterperry Gardens, Oxford

Four-day arts festival featuring workshops,
demonstrations and over 250 exhibitors.

Taste and take home fresh artisan food or
enjoy at the festival.



Book your festival tickets
handmadeinbritain.co.uk/oxford

Organised by:
HANDMADE
in Britain

Event partners:
ASHMOLEAN 
Waterperry
Gardens



Dragon School Oxford



The Dragon is a co-educational day and boarding school in Oxford which offers an outstanding educational experience for both boys and girls from 4 to 13 years.

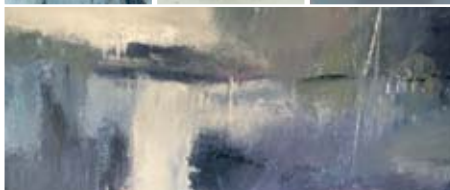
Dragon School, Bardwell Road, Oxford OX2 6SS
T: +44 (0) 1865 315405 | E: admissions@dragonschool.org
www.dragonschool.org

 Dragon School Oxford

 @TheDragonschool

 Oxford Schools' Bus Partnership - 10 Routes Available across Oxfordshire

Clumps Studio



Four artists exhibiting in two large studios.
Enjoy teas in a peaceful garden next to Wittenham Clumps.
Open 11 - 19 May 11am - 6pm
The White Cottage, Little Wittenham, OX14 4RA



**Artist
Author
Teacher**

Debrah Martin


www.debrahmartin.co.uk

**Oxford City
4-12 May:**
152 The Old Fire Station, 40, George Street, OX1 2AQ

**103 SJE Arts
Cloister Gallery,
109A Iffley Road,
Oxford, OX4 1EH
S.Oxfordshire
11-19 May:**
178 Village Art, Appleton Village Hall, Abingdon, OX13 5JS

**241 Cornerstones
25 Station Rd,
Didcot, OX11 7NE**

4-27th May:
29 The Spice of Life, Spice Lounge, 193 Banbury Road, Oxford, OX2 7AR



Wychwood School
OXFORD

A pint-sized powerhouse...

...with a personalised approach

**ART EXHIBITION,
PRIVATE VIEW**

Tuesday 2 July • 5.30pm

Discover more at
wychwoodschool.org

LiterArties

**9 Artists who are also Writers at
the Jam Factory 27 Feb - 16 April
the Old Fire Station 8 March - 11 May
the Spice Lounge 4 May - 26 May**

Workshops, Talks, Meet the Artist-Author

www.literarties.com




Kieran Stiles Art Studios



**Art studio
Exhibitions
Art workshops**

07967 075367
kieran@kieranstiles.com
2 Woodstock Road, Oxford. OX2 6HT
www.kieranstiles.com



Manja Scott

SCG

six exhibitions of
contemporary art a year

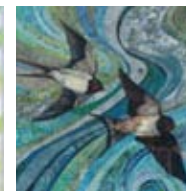
Sewell Centre Gallery,
Radley College
supports
Oxfordshire Artweeks

www.radley.org.uk/sewell-centre-gallery

Art in Action Gallery

SHOWCASING THE UNIQUE

Open daily from 10.00 a.m.



■ Ceramics ■ Glass ■ Jewellery ■ Paintings ■ Prints ■ Sculpture

www.waterperrygardens.co.uk | 01844 339254 ext 3 | gallery@waterperrygardens.co.uk

The Mary Moser Award

This annual Artweeks award was established to honour Mary Moser's commitment to Artweeks and to further the career of a professional artist who has taken up art as a second career later in life.

Previous winners include:

Sculptor **Martin Smith**,

Summertown (**venue 35**)

Ceramicist **Crabby Taylor**,

Wilcote near Charlbury (**venue 406**)

Glass artist **Wendy Newhofer**,

Jericho (**venue 56**)

Painter **Jane Duff**,

Little Wittenham (**venue 255**)

Painter **Elaine Kazimierczuk**,

Osney Island, Oxford (**venue 159**)

Wendy Newhofer



Martin Smith



Crabby Taylor

Jane Duff



Elaine Kazimierczuk

Introducing Claire Christie Sadler

Previously a professional cellist, the skills from a musical career are evident in the technical accuracy and transient quality of Claire's art: she is acutely aware of her movements and the marks she makes, using the charcoal or brush with the precision and delicacy of a bow.

With emotion, and a quiet contemplation, Claire captures a sense of silence on paper with clear, clean lines and considered contrast. Rich in atmosphere, her drawings show the narrative of the landscape in all its moods, from harmonious, luminous and ethereal to brooding and dark, as the substance of the land, the rhythms of the seasons and the tides, and the transience of the light present a continual 'performance': the parallels with music are clear to see. The relatively stark nature of black-and-white is explicitly dramatic and expressive whilst timeless and evocative, her light touch and loose lines softening a strong and sometimes bleak skyline.



You can visit Claire Christie Sadler's Artweeks exhibition at venue 41 in Summertown, Oxford.

**ART FORUM: ART IN
THE DIGITAL AGE**
with a panel of four experts

Wednesday 8th May
7pm - 8pm

Museum of Natural History, Parks
Road, Oxford OX1 3PW

Tickets £7 to include a glass
of wine at 6.30pm, available
from susan@susanmoxley.com
or on the door.

Book ahead to reserve your seat.



Tom Faber venue 44



George Taylor "Elemental 19" 2018

SUNNINGWELL SCHOOL OF ART

The Old School, Sunningwell, Nr Abingdon, Oxon OX13 6RD Tel/Fax: 01865 730442
25th, 26th and 27th May, 10.00 am – 5.00 pm



Professional tuition in a range of courses including:

Painting; Drawing; Sculpture; Pottery; Children's Courses; Short Courses.

email: sunningwell@artschool.org.uk

check out our web site: www.artschool.org.uk

TAYLOR-THWAITES STUDIOS

Stonewalls, Sturt Road, Charlbury, Chipping Norton, Oxon OX7 3EP

(Open by private appointment throughout the year)

An exhibition of wall hung mixed media and free standing art works in
the studios of two innovative, professional visual artists.

Saturday 18th to Monday 27th May 12.00 - 5.00 each day



Janice Thwaites "Piano Graveyard Keyboard." 2019

www.georgetaylorart.com www.janicethwaites.org.uk

01608 810174

An Earthly Paradise: William Morris & The Thames

1 February – 14 July 2019

This stunning new exhibition, featuring original designs, textiles and personal items, explores the work of William Morris and his relationship with the river.



Supported through public funding by
**ARTS COUNCIL
ENGLAND**

rrm.co.uk

Mill Meadows, Henley on Thames, RG9 1BF
01491 415600 Registered Charity 1001051

© Victoria and Albert Museum, London.
Wandle furnishing fabric, by William Morris.
England, late 19th Century.



Jericho Artweeks presents



The Mystique of the Studio and the World Within

Artweeks Director Esther Lafferty talks about artists' spaces, the ways they are used and the many stories they reveal.

The Ninth Jericho Lecture
presents:

Esther Lafferty
Executive Director,
Oxfordshire Artweeks

**Tuesday 7 May 2019
at 7.30pm**

St Barnabas Church, Cardigan Street,
Jericho, Oxford OX2 6BG

ADMISSION FREE - Refreshments
available from 7pm / donations
welcome



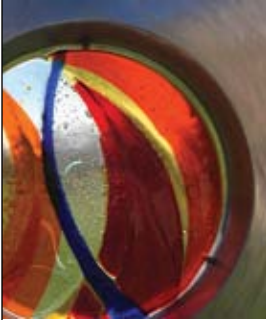
Esther Lafferty



Top Quality Reproductions from your artworks and photographs

- Digital image capture & artwork scanning
- Prints up to A1 (61 x 84cm, 24 x 33in)
- Best quality archival art paper, canvas & inks
- Certified 75 year fade resistance
- Perfect for short and limited edition print runs
- Make prints on demand as you need them
- Exhibition quality printing
- Short run high quality greetings cards
- Very accurate colour match
- Over 35yrs colour printing experience
- Easy parking
- Details at www.chromatech.uk.com





vital peeters

glass studio
sculpture garden

30th
anniversary

4-12 may

11am - 6pm

538, banbury road, oxford OX2 8EG
tel 01865 512761

www.vitalpeeters.co.uk

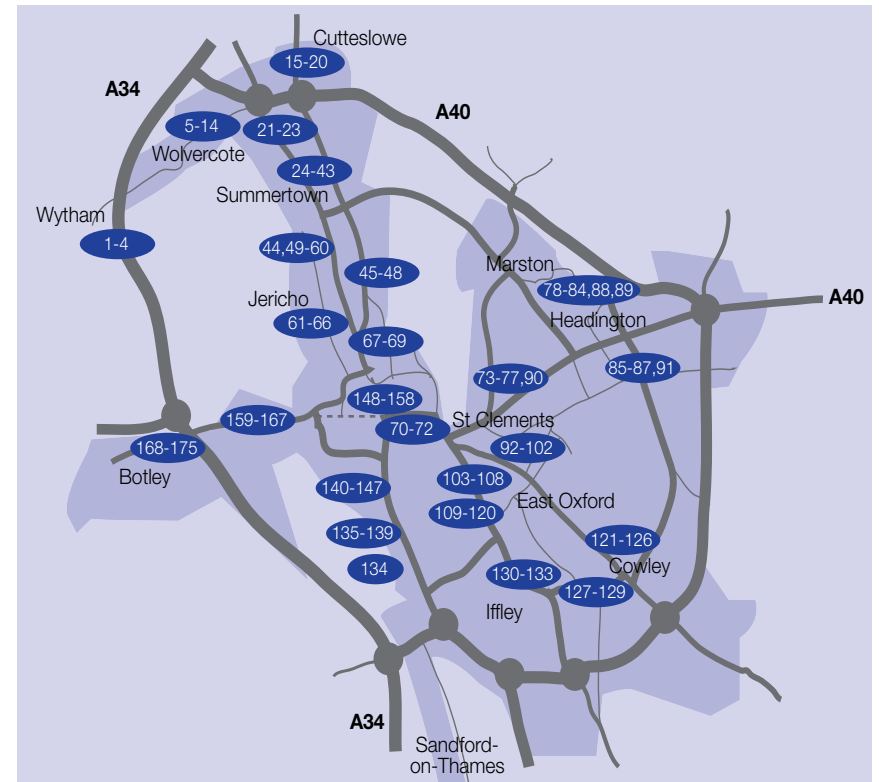
facebook: vital peeters
Instagram: vitalpeetersglassandstone



Be creative
Be at d'Overbroeck's

**An independent, co-educational school
in North Oxford for students aged 11-18**

Open Day - Saturday 11 May 2019 | www.doverbroecks.com/openday



Oxford City Map

This map is to provide approximate guidance only. Please use the venue addresses provided with a road map or SatNav to locate specific exhibitions.

Additional Information

Visit the Artweeks website to see, for many exhibitors, further details, artist biographies, additional pictures of artists' work and to check for any changes and updates.

Local Area Trails

Some groups of artists, coordinated by local volunteer organisers, have put together more detailed trail maps to help you navigate from venue to venue. Many of these can be downloaded at www.artweeks.org

1 Rosie Fairfax-Cholmeley

| Robin Wilson
Ceramics, Printmaking



Working printshop: hand-made prints, maps, cards & ceramics in the heart of Wytham Woods. Try your hand at printing. 11am-6pm
The Wytham Studio
Wytham Woods OX2 8QQ
07946 597316
www.thewythamstudio.co.uk
OS | D | R | P | T (& 18-19 & 25-27 May)

4 5 6 7 8 9 10 11 12

2 John Blandy

| Kate Day Dawson
Drawing, Painting



Pastels that combine an abstract style with a focus on light and movement.
11am-6pm
Saw Mill
Wytham Wood OX2 8QQ
07957 282688
www.johnblandy.co.uk

W | OS | P

4 5 6 7 8 9 10 11 12

3 Josephine Malden

| Kate Day Dawson
| Jackie Richards
Various



Ceramic mosaics, paper collage and silver jewellery using recycled materials and inspired by nature.
12pm-6pm
Wytham OX2 8QQ
01865 247697

P

4 5 6 7 8 9 10 11 12

7 Neil Butterfield OAS WOA

| Painting



Exhibiting with Phillip Dove (stained glass), Jane Moser (sculpture) & Alison Morris (jewellery). Ample parking.
11am-6pm
2 Rowland Close
Wolvercote OX2 8PW
07800 658859
www.neilbutterfieldart.co.uk

P

4 5 6 7 8 9 10 11 12

8 Phillip Dove

| Glass



Stained glass. Exhibiting with Alison Morris (jewellery), Neil Butterfield (painting), Jane Moser (sculpture). Ample parking.
11am-6pm
2 Rowland Close
Wolvercote OX2 8PW
01865 429388
www.phillipdove.co.uk
P

4 5 6 7 8 9 10 11 12

9 Alison Morris

| Jewellery

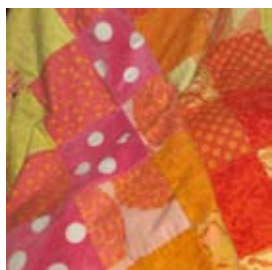


Silver jewellery. Exhibiting with Phillip Dove (stained glass), Neil Butterfield (painting), Jane Moser (sculpture). Ample parking.
11am-6pm
2 Rowland Close
Wolvercote OX2 8PW
07891 084005
alisonmorrisjewellery.com
P

4 5 6 7 8 9 10 11 12

4 Claire Webster

| Textiles

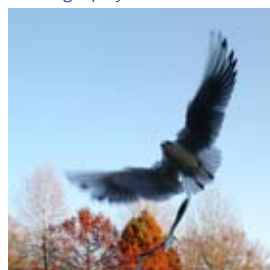


Handmade blankets and other textiles. Bright fabrics and country plaids used.
11am-6pm
Cottage 8
Wytham
OX2 8QA

4 5 6 7 8 9 10 11 12

5 Jenny Blyth

| Photography



Port Meadow, University Parks and a much-loved Oxfordshire landscape.
11am-6pm
133 Godstow Road
Wolvercote
OX2 8PG
07798 526252
jennyblythfineart.co.uk

P

4 5 6 7 8 9 10 11 12

6 Adam Knight

| Drawing, Painting



An artist based and living in Wolvercote, Oxford.
11am-6pm
The White Hart
126 Godstow Road
Wolvercote
OX2 8PQ
07701 335295
arkn1ght62@gmail.com

R | P

4 5 6 7 8 9 10 11 12

10 Jane Moser

| Sculpture



Sculpture. Exhibiting with Philip Dove (stained glass), Alison Morris (jewellery) & Neil Butterfield (painting). Ample parking.
11am-6pm.
2 Rowland Close
Wolvercote OX2 8PW
07977 578809
jane.s.moser@gmail.com
P

4 5 6 7 8 9 10 11 12

11 Vicky Cumming

| Jewellery



Unique handmade silver jewellery inspired by nature and the sea.
11am-6pm
9 Rowland Close
Wolvercote OX2 8PW
01865 513741
vickycummingsilver.co.uk

4 5 6 7 8 9 10 11 12

12 Sue Weinstock

| Glass



Beautiful ethereal fused glass works made with layered metals, oxides and crushed coloured glasses.
11am-6pm
9 Rowland Close
Wolvercote OX2 8PW
01865 980524
sueweinstock.com

W | D | P

4 5 6 7 8 9 10 11 12

13 Tom Croft OAS

Drawing, Painting



Oil portraits & some oil landscapes of Oxfordshire; paintings for sale. I will be working on a painting during Artweeks.

11am-6pm

32 Home Close

Wolvercote

OX2 8PS

www.thomascroft.co.uk

OS | P

4 5 6 7 8 9 10 11 12

14 Janet Cross

Ceramics



Handbuilt porcelain ceramics inspired by textiles displayed in the artist's studio.

11am-6pm

47 Godstow Road

Wolvercote

OX2 8PE

01865 556093

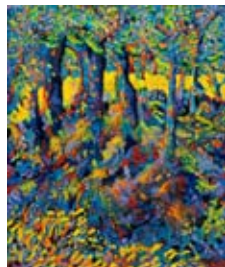
janetsc@outlook.com

W | OS | P

4 5 6 7 8 9 10 11 12

15 Rosie Phipps OAS

Painting



Rosie's paintings are reflections on life.

12pm-6pm

26 Five Mile Drive

North Oxford

OX2 8HR

07795 341149

www.rosiehippsart.com

P

4 5 6 7 8 9 10 11 12

19 Jane Hainsworth

Jewellery



Colourful individually-created jewellery.

2pm-6pm (Sat/Sun 12-6pm)

12 Hayward Road

North Oxford

OX2 8LW

07813 063245

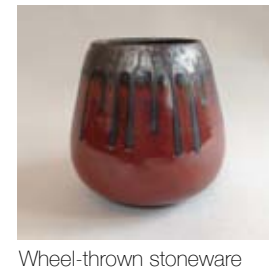
www.fizzipins.com

R | P

4 5 6 7 8 9 10 11 12

20 Tam Frishberg OCG

Pottery



Wheel-thrown stoneware pottery: mainly functional pieces to please both hand and eye.

11am-6pm

10 Hayward Road, North Oxford

OX2 8LW

01865 454274

[c/o oxfordshirecraftguild.co.uk](http://c/o.oxfordshirecraftguild.co.uk)

W | OS | P

4 5 6 7 8 9 10 11 12

21 Judith Gussin OCG

Textiles



Hand-dyed textiles in vibrant colours including scarves, bags, sketch books, & pictures with hand stitching & block printing.

11am-6pm

44 Blandford Avenue

North Oxford OX2 8DZ

01608 641295

judithgussin@talktalk.net

P | T

4 5 6 7 8 9 10 11 12

16 Alison Blanchard

Glass, Textiles



Individual fused glass dishes, jewellery and candle holders. Beautiful handcrafted bags and textiles.

11am-6pm (Tue/Wed/Fri 1.30-6pm, Thu 1.30-8pm)

67 Five Mile Drive

North Oxford

OX2 8HW

www.mrsblanch.co.uk

P

4 5 6 7 8 9 10 11 12

17 Vital Peeters

Glass, Sculpture, Drawing



30th anniversary glass exhibition; stone & glass sculptures in garden, & drawings. Extensive portfolio. Come & celebrate!

11am-6pm

538 Banbury Road

North Oxford

OX2 8EG

01865 512761

www.vitaljpeeters.co.uk

W | OS | R | P

4 5 6 7 8 9 10 11 12

18 Marjorie Collins OAS

Painting



Exhibition of watercolours and acrylics of contemporary still lifes, florals and cityscapes.

11am-6pm

28 Hayward Road

North Oxford

OX2 8LW

01865 552591

www.marjoriecollins.com

4

5 6 7 8 9 10 11 12

22 Philippa Norris

Ceramics, Pottery



Functional and decorative porcelain ceramics inspired by my garden and dogs.

11am-6pm

44 Blandford Avenue

North Oxford

OX2 8DZ

01865 514670

philippannorrisceramics.co.uk

OS | R | P

4 5 6 7 8 9 10 11 12

23 Zoe Efstathiou

Painting



Bright uplifting oil paintings that celebrate nature. Many recent works feature poppies.

11am-8pm

30 Woodstock Close

North Oxford

OX2 8DB

07990 016828

zefstathiou@gmail.com

OS | R | P

4 5 6 7 8 9 10 11 12

24 Jonathan Holt

Jewellery



Handmade silver jewellery using semi-precious & beach stones. Necklaces, bangles, rings, earrings & spoons.

12pm-6pm

(Sat/Sun 11-6pm)

40 Squitchey Lane

North Oxford OX2 7LD

01865 558187

oxfordholts@gmail.com

4 5 6 7 8 9 10 11 12

25 Barbara Harrison Caban

Painting



Colourful show of large & small paintings in airy garden rooms. New party paintings! Decorative boxes, prints & cards. With Carlos Caban. 11am-6pm

Apt 1 Victoria Gate, 1A Victoria Rd
Summertown OX2 7LS
01865 554555

www.studiolop.com

W | O | S | D | R | P

4 5 6 7 8 9 10 11 12

26 Carlos Caban

Mixed Media



Assortment of mixed media works. Collage, oils & acrylic on canvas and paper. Cards & prints. With Barbara Harrison Caban. 11am-6pm

Apt 1 Victoria Gate, 1A Victoria Rd
Summertown OX2 7LS
01865 554555

carloscaban.wordpress.com

W | O | S | D | R | P

4 5 6 7 8 9 10 11 12

27 Michael Hamand

Drawing, Painting, Photography



Black & white photography with drawings & watercolours. 12pm-6pm

15 Portland Road
Summertown
OX2 7EZ

01865 559856

4 5 6 7 8 9 10 11 12

31 Sarah Wiseman Gallery

Printmaking



Meadow and Shore: a solo exhibition of new prints by Angie Lewin, exploring the native wildflowers of England and Scotland. 10am-5.30pm (Mon 10-4pm)

40-41 South Parade
Summertown, OX2 7JL
01865 515123

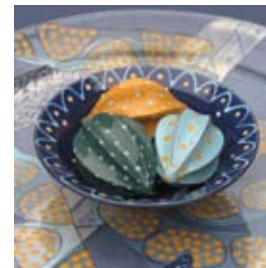
www.wisegal.com

W (runs Mon-Sat until 25 May)

4 5 6 7 8 9 10 11 12

32 Bridget Williams

Ceramics



Wheel-thrown slip-decorated earthenware pottery and one-off handbuilt burnished smoke-fired terracotta vessels. 11am-6pm

44 South Parade
Summertown OX2 7JL
07891 165654

www.bridgetwilliams.co.uk

4 5 6 7 8 9 10 11 12

33 James Milroy

Painting



Semi-abstract paintings combining elements developed from Celtic and Islamic pattern in a fusion of tanglesome knotfulness. 11am-6pm

44 South Parade
Summertown OX2 7JL
07980 223913

www.jamesmilroy.co.uk

4 5 6 7 8 9 10 11 12

28 Clay Paper Scissors

Various



Unique, inspiring and affordable ceramics, textiles, prints and paintings by four artists. 11am-6pm

84 Lonsdale Rd
Summertown
OX2 7ER
01993 878132

rrartworks@outlook.com

4 5 6 7 8 9 10 11 12

29 The Spice of Life

Various



Art from diverse backgrounds, cultures and experiences. Exciting mix of paintings to lift your spirit. 11am-6pm (Thu 11am-8pm)

193 Banbury Road
Summertown
OX2 7AR
07976 946331

www.literarties.com

R | P (runs until 26 May)

4 5 6 7 8 9 10 11 12

30 Siobhan Cooney

New Media



Abstract art with a bold unique style, using colour as its main device to create original art. 11am-5pm

Vanilla
13 South Parade
Summertown
OX2 9LF

www.siohhancooney.com

4 5 6 7 8 9 10 11 12

34 Addy Gardner

Painting



Touching the Earth: experiential paintings of abstracted landscape alongside sculpture by Martin Smith. Curated by Jenny Blyth Fine Art. 10am-4pm (Sat 12-4 pm)

The North Wall Arts Centre
South Parade OX2 7JN
01865 319450

thenorthwall.com

W

4 5 6 7 8 9 10 11 12

35 Martin Smith

Sculpture



Touching the Earth: fruits of the earth sculpture in alabaster and marble alongside paintings by Addy Gardner. Curated by Jenny Blyth Fine Art. 10am-4pm (Sat 12-4 pm)

The North Wall Arts Centre
South Parade OX2 7JN
01865 319450

thenorthwall.com

W

4 5 6 7 8 9 10 11 12

36 The Turrill Sculpture Garden

Sculpture



Beautiful sculptural pieces for the garden in stone, ceramic, steel and glass by talented Oxfordshire makers. 9.30am-5pm (Thu 9.30 am-6.30pm, Sat 9-4pm)

Through Summertown Library
South Parade OX2 7JN
01865 515584

turrillsculpturegarden.org.uk

W (runs until 25 May closed Wed/Sun)

4 5 6 7 8 9 10 11 12

37 Robyn Hardyman

Ceramics



Fine ceramics thrown on the wheel in porcelain, and glazed in a variety of complementary tones and textures.
12pm-6pm
(Mon/Fri 12pm-5pm)
35 Stratfield Road, Summertown
OX2 7BG. 01865 515263
robyn.hardyman@btinternet.com

4 5 6 7 8 9 10 11 12

38 Harriet Eagle OAS

Zanna Rand-Bell
Painting, Printmaking,
Jewellery



Harriet's harmonious oil paintings of scenes & inspirational settings, plus drawings & prints exploring new paths to abstraction. Semi-precious gold and silver jewellery.
12-6pm (Mon/Fri 12pm-5pm)
35 Stratfield Road
Summertown
OX2 7BG. 07850 573030
www.harrieteagle.com

4 5 6 7 8 9 10 11 12

39 Francesca Shakespeare OAS

Painting

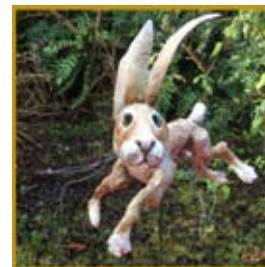


Recent paintings and drawings in garden studio. If not officially open, phone or just knock on the door.
11am-6pm
1 Oakthorpe Road
Summertown OX2 7BD
07976 822773
francescashespeare.com
OS

4 5 6 7 8 9 10 11 12

43 James C Cochrane OCG

Mixed Media, Sculpture



A hodgepodge collection of joyful colourful papier maché and mixed media animals and figures.
9am-5.30pm (Sun 10-4pm)
Farrow and Ball
225 Banbury Road
Summertown OX2 7HS
07816 129970
jamesccochrane.co.uk
W (runs until 14th)

4 5 6 7 8 9 10 11 12

44 Tom Faber

Painting



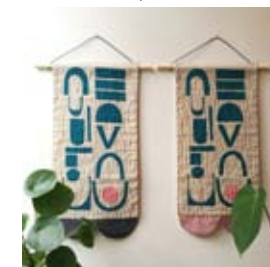
I combine painting and digital collage to explore the relationship between humankind and the natural environment.
11am-6pm (Thu 11-8pm)
3 Frenchay Road
Oxford OX2 6TG
07535 622673
www.tomfaber.net

R | P

4 5 6 7 8 9 10 11 12

45 Miesje Chafer

Malisa Sledmere
Mixed Media, Textiles



Screen-printed accessories and homewares, and mixed media sculpture.
11am-5pm
7 Northmoor Road
Oxford OX2 6UW
07596 076762
www.miesjechafer.com

4 5 6 7 8 9 10 11 12

40 Susan Moxley

Various



An exhibition of new prints, paintings and silver jewellery.
11am-6pm
43 Oakthorpe Road
Summertown
OX2 7BD
01865 516556
www.susanmoxley.com

W

4 5 6 7 8 9 10 11 12

41 Claire Christie Sadler

Drawing



Drawings, including work inspired by light on Scottish landscapes. Mary Moser award winner 2019 Showing with jeweller Tessa Blenkinsop.
11am-6pm
The Studio, Oakthorpe Place
between Thorncliffe & Oakthorpe Rd, Summertown OX2 7BB
07968 231173
www.clairecsadler.co.uk
W

4 5 6 7 8 9 10 11 12

42 Tessa Blenkinsop

Jewellery

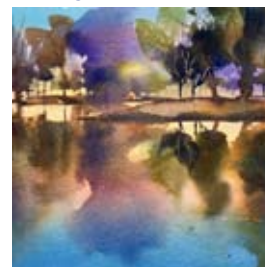


Jewellery in silver and gold with seaglass, Murano & more. In garden studio with Claire Sadler, winner of 2019 The Mary Moser Prize.
11am-6pm
The Studio, Oakthorpe Place
between Thorncliffe & Oakthorpe Rd, Summertown OX2 7BB, 01865 513812
tessblenkinsop.co.uk
W

4 5 6 7 8 9 10 11 12

46 Alison Hehir

Painting



A celebration of Oxfordshire in vibrant, transparent watercolour.
11am-6pm
54 Park Town
Oxford OX2 6SJ
01865 553771
www.alisonhehir.com

P

4 5 6 7 8 9 10 11 12

47 Teresa Munby WOA

Ceramics



Porcelain paper clay vases, sculptural and wall pieces in textured white transparent glazed or coloured marbled effect.
11am-6pm
56 Park Town
(access via the rear in Dragon Lane) OX2 6SJ
www.teresamunbyceramics.co.uk
P

4 5 6 7 8 9 10 11 12

48 Maison Française D'Oxford

Photography



Photographic tarot cards featuring surreal insects in both playing-card format and as large prints. Photobooks too and more.
10am-5pm (Sat/Sun 1-4pm)
Maison Française d'Oxford
2-10 Norham Road
Oxford OX2 6SE. 01865 284220
www.mfo.ac.uk
W

4 5 6 7 8 9 10 11 12

49 Makespace Oxford

Various



Vibrant community-run studios & workspace hosts diverse group show. Vehicle access via Frenchay Road. 11am-6pm (Thu 11-8pm)
Makespace Oxford
1 Aristotle Lane (vehicles via Frenchay Rd) Oxford OX2 6TP
01865 554097
makespaceoxford.org
W|O|S|D|P|T

4 5 6 7 8 9 10 11 12

50 SS Philip and James Primary School

Various



An inspirational exhibition of artwork with a variety of musical performances and spoken word. 5pm-7pm
SS Philip & James School
Navigation Way
Oxford OX2 6AB
01865 311064
philandjim.org.uk
W|R|T|NS

23 May

4 5 6 7 8 9 10 11 12

51 Oxford Ikebana Study Group

Miscellaneous



One-day only exhibition and demos show the beauty and balance of Japanese flower arrangements (ikebana). 12.30pm-5.30pm
St Margaret's Institute
30 Polstead Road
Oxford OX4 3NY
01865 748365
www.smi-oxford.org.uk
W|D|R|P|NS

4 5 6 7 8 9 10 11 12

55 Frank Newhofer

Photography



Polaroid-type images can have their own particular power: these are complemented with images taken on the Silk Route in Uzbekistan. 11am-6pm
82 Southmoor Road
Jericho OX2 6RB
frank.newhofer@gmail.com

4 5 6 7 8 9 10 11 12

56 Wendy Newhofer

OAS OCG

Glass



Elegant wall panels and sculptural glass for indoors and out. Lovely garden studio open to visitors. 11am-6pm
82 Southmoor Road
Jericho OX2 6RB
07732 128083
www.wendynewhofer.com

OS|D

4 5 6 7 8 9 10 11 12

57 Jean Somerfield WOA

Painting



Voyages of Discovery: landscapes and still life in soft pastel and/or watercolour, viewed with an abstracting eye. Light, form, colour. 11.30am-6pm
55 Kingston Road
Wilton Manor OX2 6RH
01865 559819
R

4 5 6 7 8 9 10 11 12

52 Manja Scott OPC

Printmaking



An exhibition of drawings, original prints and paintings, both figurative and abstract. 11am-6pm (Thu 11-8pm)
32 Warnborough Road
Oxford
OX2 6JA
01865 559455
manjascott.com

OS

4 5 6 7 8 9 10 11 12

53 Leonie Bennett OCG

Jewellery



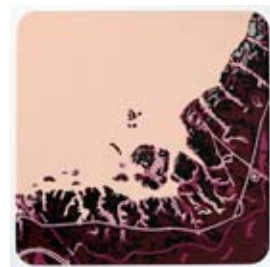
Fine jewellery for everyday wear & elegant earrings for non-pierced ears. 11am-6pm
82 Southmoor Road
Jericho
OX2 6RB
07840 296418
www.leoniebennett.co.uk

OS|D

4 5 6 7 8 9 10 11 12

54 Kate Hipkiss OAS

Paper



Intricate hand-cut and layered paper inspired by landscape, the natural world and architecture. 11am-6pm
82 Southmoor Road
Jericho
OX2 6RB
[/katehipkiss](https://www.instagram.com/katehipkiss)

4 5 6 7 8 9 10 11 12

58 Vivien Shelton

Hugh Shelton
Ceramics, Drawing



Hand-built and thrown pottery. Exercises in perspective in graphite and ink. 11am-6pm
7 Plantation Road
Jericho
OX2 6JD
01865 558886
vivienshelton@mac.com

4 5 6 7 8 9 10 11 12

59 Maggie Bicknell OAS

Painting



Lots of plein-air out and about in Oxfordshire and beyond, plus many interiors and still lifes. Most in oils or chalk pastels. 11am-6pm
14 Plantation Rd
Jericho
OX2 6JD
01865 516751
maggiebicknell.wordpress.com

OS

4 5 6 7 8 9 10 11 12

60 Tony Thomson

Jewellery



Exhibition & workshop. Unique jewellery & silverware using silver, gold, precious & semi-precious stones, fossils, shells & sea-glass. 12pm-6pm
51 Plantation Road
Jericho OX2 6JE
01865 512913
tony.thomson51@icloud.com

OS

4 5 6 7 8 9 10 11 12

61 William Cotterill

Painting



Textural abstract & semi-abstract paintings. Exhibition continues at 2SR Art Space in Botley (venue 175). 10am-10pm
Manos
105 Walton Street
Jericho OX2 6EB
07940 000172
www.williamcotterill.co.uk

W 4-27 May
4 5 6 7 8 9 10 11 12

64 Art Studio (Jericho)

Mixed Media



Large mixed media group exhibition in the heart of Jericho. Demo on 4th, 5th, 11th & 12th.
11am-5pm
33A Canal Street
Jericho
OX2 6BQ
artstudio.uk

D | T
4 5 6 7 8 9 10 11 12

62 Rachel Ducker OAS

Sculpture



Unique sculptured wire figures expressing the emotional dynamics of human nature. New bronze and wire pieces. Handcrafted silver jewellery.
11am-6pm
7 Shirley Place
Juxon Street
Jericho OX2 6DN
07855 751756
www.rachelducker.co.uk

4 5 6 7 8 9 10 11 12

65 Pam Foley | Patricia Freemany

Ceramics, Jewellery, Sculpture



Established artists working in clay and silver. Other days by appointment.
11am-6pm
3 Albert Street
Jericho OX2 6AY
07931 774469
www.pamfoley.co.uk

4 5 6 7 8 9 10 11 12

63 Susan Avery

Painting



Watercolour, landscape, industry, Oxford, Venice.
11am-6pm (Thu 11-8pm)
33 Cardigan Street
Jericho
OX2 6BP
01865 557231
susanavery.co.uk

W 4 5 6 7 8 9 10 11 12

66 Neil Drury OPC

Painting



Richly-coloured paintings, prints and drawings.
11am-6pm
48B Walton Crescent
Jericho
OX1 2JQ
01865 512984
www.neildrury.com

4 5 6 7 8 9 10 11 12

67 Kieran Stiles

Painting



Images that fizzle with life and electric colour, with fractured marks, dashes and splatters that capture the spirit of place.
12pm-4pm
Kieran Stiles Art Studios
2 Woodstock Road
Oxford
OX2 6HT
07967 075367
www.kieranstiles.com

OS | T
4 5 6 7 8 9 10 11 12

70 Harris Manchester College

Ceramics



The College has been given a delightful collection of ceramics emanating from the world famous Leach-Cardew studios.
10am-5pm
Harris Manchester College
Mansfield Road, Oxford
OX1 3TD
01865 281472
www.hmc.ox.ac.uk

W | NS
4 5 6 7 8 9 10 11 12

68 William Mackesy

Painting

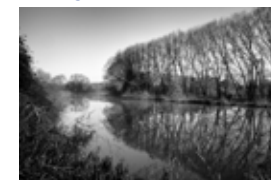


A wide range of painting, from abstract cut-outs in gouache to still lifes, landscapes and people in oil.
11am-6pm
The Barn, Kendrew Quadrangle
St John's College
OX1 3JP
01451 831727
www.williammackesy.com

W 4 5 6 7 8 9 10 11 12

71 Rob Farrands

Photography



Tone & texture explored through my black and white photographs & Sally Dorrity's unique hand-built pots.
11am-6pm (Thu 11am-8pm)
Stanford University in Oxford
Stanford House
65 High Street
OX1 4EL
01865 777919
robffarrands.com

4 5 6 7 8 9 10 11 12

69 Oxford Photographers

Photography



Local photographers present recent work on subjects ranging from architecture and landscape to wildlife and street photography. 8am-6pm
Mezzanine of the Andrew Wiles Building (Mathematical Institute)
Radcliffe Observatory Quarter
Woodstock Road OX2 6GG
07410 627680
oxfordphotographers.org

W | R | NS (& weekdays until 27 May)
4 5 6 7 8 9 10 11 12

72 Sally Dorrity WOA

Ceramics

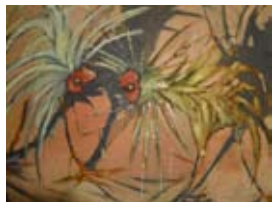


Tone & Texture: unique handbuilt pots, both functional & sculptural, with a range of shapes and glaze combinations, for indoors & out.
11am-6pm (Thu 11am-8pm)
Stanford University in Oxford
Stanford House
65 High Street
OX1 4EL
07944 538517
sallydorrity.co.uk

P 4 5 6 7 8 9 10 11 12

73 Sara Banerji

Painting, Sculpture



Lit Art, Glitter Art & Skip Sculpture: illustrations & original writing, translucent animal images & graceful/grotesque sculptures.
2pm-6pm
7 London Place
St Clements
OX4 1BD
01865 251250
sarabanerji.wordpress.com

OS | D | R | T (also 18-19 & 25-26 May)

4 5 6 7 8 9 10 11 12

74 Oxford Grenoble Association

Mixed Media, Sculpture



Art in the Park: sculpture, poetry and participatory art.
Opening event Sat 4th May 2pm.
11am-6pm (Thu 11-8pm)
Headington Hill Park
Headington Hill
OX3 OED
01865 730110
oxfordtwincitylinks.com

W | P | NS

4 5 6 7 8 9 10 11 12

75 Stacey Gledhill

Painting



Oil paintings with a range of subjects painted from life, with texture, harmonious colour and visible brushwork.
11am-6pm (Thu 11-8pm)
73 Ferry Road
Marston
OX3 0EU
07848 418661
www.staceygledhill.com

OS | D | P

4 5 6 7 8 9 10 11 12

79 Mobile CArt Gallery

Various



An independent art project by Monika Filipek, a mobile art stall with ceramics, drawing and painting, jewellery, & sculpture which you can meet around Oxford.
11am-6pm
23 Halliday Hill, Headington
OX3 9PZ. 07716 416562
cartmobileartgallery.com

OS

4 5 6 7 8 9 10 11 12

80 Angela Beatson Wood

Drawing, Painting



Studio work and 'plein air' concerned with exotic travel and portraits of lovely people.
11am-5.30pm
Camellia House
2 St Andrew's Road
Headington
OX3 9DL
01865 425830
angelabeatsonwood@icloud.com

OS | R | P

4 5 6 7 8 9 10 11 12

81 Art at St Andrew's

Various



6 artists, 5 new this year. Textiles, paper, ceramics, jewellery, painting. Jewellery workshops. 'Representing God in Art', talk 8th @ 8pm.
12pm-6pm
St Andrew's Church
St Andrew's Road
Old Headington
OX3 9DL
01865 750121
artatstandrews@gmail.com

W | R | T

4 5 6 7 8 9 10 11 12

76 Sylvia Bahri

Painting, Textiles



I am inspired by nature from Morocco to Amazonia, playing with shapes and vivid colors. Painting on canvas, prints on paper and textiles.
12pm-6pm (Thu 12-8pm)
Now at venue 117:
133 Hurst Street OX4 1HE
& also at venue 169
www.sylviabahri.com

W | OS | P

4 5 6 7 8 9 10 11 12

77 Kit Adlington OCG

Pottery



Thrown functional stoneware pottery with vibrant glazes shown in small working studio. On-site parking.
12pm-6pm (Thu 12-8pm)
5 Feilden Grove
Headington
OX3 0DU
01865 769121
c/o www.ocg.co.uk

OS | P

4 5 6 7 8 9 10 11 12

78 Nicholas Blakemore

Painting



Vibrant and striking abstract works in mixed media with influences from the UK and beyond.
10am-5pm (Sun 10-4pm)
Grange Court Studio
15 Oxford Road
Old Marston OX3 0PQ
07979 770680
www.nickblakemoreart.com

4 5 6 7 8 9 10 11 12

82 Mazz Image

Painting



A moment of movement - photographing the flow.
11am-6pm
29 Pitts Road
Headington
OX3 8BA
07875 515499
www.mazzimage.com

W | OS | R | T (runs until 27 May)

4 5 6 7 8 9 10 11 12

83 Marieke O'Connor

Ceramics



Intricately-patterned porcelain & accessories, functional & decorative. Working garden studio. Ample parking & refreshments.
12pm-6pm (Thu 12-8pm)
25 Quarry Road
Headington
OX3 8NU
07813 935756
marieke.oconnor@gmail.com

OS | D | R | P

4 5 6 7 8 9 10 11 12

84 Art at Holy Trinity

Various



Exhibition of paintings and embroidery in Holy Trinity Church, reached from Trinity Road or Quarry Road.
12pm-6pm
46 Quarry Road
Headington
OX3 8NU
01865 763624
dandablackman@uwclub.net

W | NS

4 5 6 7 8 9 10 11 12

85 Ella Clocksin

Painting



Colourful, contemporary & contemplative watercolour & acrylic, mostly abstract landscape. Parking weekdays Quarry Rd; Sat/Sun York Ave. 12pm-6pm (Thu 1pm-8pm) 26 York Avenue Headington OX3 8NS 01865 766263 www.ellaclocksins.com

OS | P | T

4 5 6 7 8 9 10 11 12

88 Ruth Dodd | Janet Dunkley | Linda Neal

Ceramics, Painting, Photography



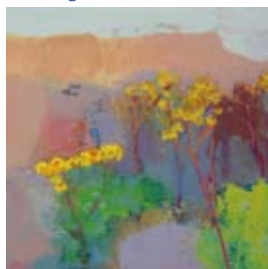
Ceramics, both functional and organic forms; watercolours of various subjects and photography, mostly of wildlife. 12pm-6pm 41A Sandfield Rd, Headington OX3 7RN. 01865 761253 ruth.dodd@gmail.com

R

4 5 6 7 8 9 10 11 12

86 Jane Strother OAS

Painting



25th Year! New work, large solo show. Contemporary landscapes in oil, sketch books. Relax, browse, no obligation to buy. Parking available. 12pm-6pm (Thu 12pm-8pm) 101 Old Road, Headington OX3 8SX. 07505 214795 www.janestrother.co.uk

OS | P | T

4 5 6 7 8 9 10 11 12

89 Vivien Sieber

Pottery



I make bowls, mugs and jugs to be used and enjoyed. They are thrown using earthenware, stoneware or porcelain in my garden studio. 12pm-5pm (Fri 3-7pm) 66 Staunton Road Headington OX3 7TP 07710 170084 www.vivien sieber.eu

OS

4 5 6 7 8 9 10 11 12

87 Gilly Whittington OCG

| Michael Kavanagh

Ceramics



Porcelain ceramics, both useful and decorative, with impressionistic watercolour still life paintings. 11am-6pm Bateman Street Studio 25 Bateman Street Headington OX3 7BG 07580 733760 www.gillywhittington.com

OS | R

4 5 6 7 8 9 10 11 12

90 Making Marks

Various



Exhibition of mixed media art by teacher-practitioners: drawing, mixed media, painting, photography, printmaking & textiles. 11am-5pm The Art School, Headington School, Headington OX3 7TD 07766 395196 kateturnbull.design@gmail.com

W | OS | P

4 5 6 7 8 9 10 11 12

91 Jackie Conway OAS OPC

Drawing, Painting,

Printmaking



Drawing animals from life and using these for painting and printmaking. All day and evenings. Churchill Hospital Old Road Headington OX3 7LE 07842 213278 jackiemconway@yahoo.co.uk

W

(runs until 27 May)

4 5 6 7 8 9 10 11 12

94 Restore Limited

Various



Arts and crafts designed and made by members in a therapeutic environment. 10am-2pm Restore Limited Manzil Way East Oxford OX4 1YH 01865 455829 laurent.cadoret@restore.org.uk

W | R | NS

4 5 6 7 8 9 10 11 12

92 Anthony Eccles OCG | Charles Hampton

Ceramics, Painting



Anthony Eccles: expressive slipware jugs. Charles Hampton: paintings in oils to complement ceramics. 12pm-6pm 128 Southfield Road Oxford OX4 1PA 07810 472995 anthonyecclesceramics.co.uk

P

4 5 6 7 8 9 10 11 12

95 Prinkie Roberts

Textiles



Hand-stitched textiles using layers of vibrant silks, cotton fabrics and threads, based on figurative, natural and abstract themes. 2pm-6pm 74 St Mary's Road East Oxford OX4 1QD 0755 7273438 www.prinkieroberts.com

W

4 5 6 7 8 9 10 11 12

93 Alan Franklin

Drawing, Sculpture



Studio exhibition of abstract drawings (flat sculptures) and sculpture. 11am-6pm (Thu/Fri 11pm-8pm, Sun 11pm-4pm) 6 Green Street East Oxford OX4 1YB 01865 242945 alanfranklin.net

OS

4 5 6 7 8 9 10 11 12

96 Viva

Various



Exploration of themes around 'children at risk' hosted by local charity working globally with children. 11am-4pm 8 The Gallery 54 Marston Street East Oxford OX4 1LF 01865 811660 www.viva.org

R | T | NS

4 5 6 7 8 9 10 11 12

97 Emma Davis

Painting



Abstract painting, quirky studio, colour and collections!
11am-6pm (Thu/Fri 2-8pm)
14 Rectory Road
St Clement's
OX4 1BU
07767 862540
www.emmadavispainting.com

OS

4 5 6 7 8 9 10 11 12

98 Stella Campion

Jewellery



Fresh new work from the studio of designer silver and goldsmith Stella Campion.
11am-6pm
The Workshop
100A Cowley Road
East Oxford
OX4 1JE
01865 790867
www.stellacampion.co.uk

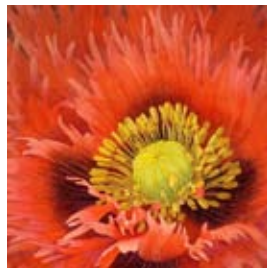
OS

4-17 May

4 5 6 7 8 9 10 11 12

99 Julia Loken

Painting



Detailed yet vibrant, glowing watercolours, mainly plants and country landscapes.
11am-6pm
The Workshop
100A Cowley Road
East Oxford
OX4 1JE
01865 881404
www.loken.co.uk

4-17 May

4 5 6 7 8 9 10 11 12

103 SJE Arts Cloister Gallery

Various



20 artists exhibit within the Grade II Victorian cloister and the beautiful tranquil garden of St John the Evangelist Church.
12pm-6pm
(Fri 12-8.30, Sun 2-5pm)
SJE Arts Cloister Gallery
St John the Evangelist Church
109A Iffley Road OX4 1EH
01865 613507
www.sje-oxford.org
W | D | T

4 5 6 7 8 9 10 11 12

104 Juliet Chadwick

Painting



Exploring the dynamics of light and shade using oils, acrylics and watercolour.
12pm-6pm
(Fri 12-8.30, Sun 2-5pm)
SJE Arts Cloister Gallery
St John the Evangelist Church
109A Iffley Road
OX4 1EH

4 5 6 7 8 9 10 11 12

105 Dianne Frank SBA OAS

Drawing



Original, framed drawings of botanical subjects. All work done in coloured pencil. Prints available to order.
12pm-6pm
(Fri 12-8.30, Sun 2-5pm)
SJE Arts Cloister Gallery
St John the Evangelist Church
109A Iffley Road OX4 1EH
01865 558102
diannelfrank@hotmail.com
W | D | T

4 5 6 7 8 9 10 11 12

100 Watt and Norris Conservation

Ceramics, Various



Conservation and restoration of art objects and antiques.
10am-1pm
The Workshop
100A Cowley Road
East Oxford
OX4 1JE
07500 956692
ceramicconservation.com

OS | NS

4 5 6 7 8 9 10 11 12

101 Merlin Bateman-Paris | Celine Bateman-Paris

Ceramics, Printmaking



Charcoal portraits and handcrafted silver jewellery.
11am-5pm
74 Cowley Road
East Oxford
OX4 1JB
07557 657072
merlin.bateman7@gmail.com

4 5 6 7 8 9 10 11 12

102 Oxford Printmakers Co-operative (OPC)

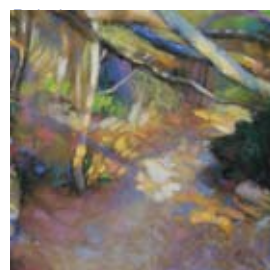
Printmaking



Skilled artists producing vibrant handmade prints in long-established workshop (over 40 years). 11am-5pm
Christadelphian Hall
Tyndale Road
East Oxford OX4 1JL
www.oxfordprintmakers.co.uk
OS | D

4 5 6 7 8 9 10 11 12

106 Penelope Fulljames OAS



Oils and pastels, large and small, loosely based on landscapes of favourite wild places.
12pm-6pm (Fri 12-8.30, Sun 2-5pm)
St John the Evangelist Church
109A Iffley Road, Oxford
OX4 1EH. 07581 837910
www.penelopefulljames.com
W | D | T

4 5 6 7 8 9 10 11 12

107 Rose Wallace CPA

Ceramics



In modern society we buy so much but value so little. My ceramics re-evaluate and challenge this notion using discarded domestic ephemera.
12pm-6pm (Fri 12-8.30, Sun 2-5pm)
SJE Arts Cloister Gallery
St John the Evangelist Church
109A Iffley Road OX4 1EH
07732 343666
rosewallaceceramics.co.uk
W | D | T

4 5 6 7 8 9 10 11 12

108 Emily Carrington Freeman

Various



'My greatest weaknesses in life are mythology and beautiful things': drawing, painting and printmaking.
11am-6pm (Thu/Fri 11-8pm)
15 James Street
East Oxford OX4 1ET
emilycarringtonfreeman.com

OS | R (& 16th, 17th, 23rd & 24th May)

4 5 6 7 8 9 10 11 12

109 Caroline Maas OAS

OPC WOA

Printmaking



Sea, city & landscapes, Oxford to Iona. Large multiplate etchings and monoprints. Also at Oxford Printmakers & Ewelme Pottery 11-19 May. 11am-6pm (Thu 11-8pm, Sun 1-6pm) 70 Stratford Street, East Oxford OX4 1SW. 01865 241290 www.carolinemaas.co.uk

4 5 6 7 8 9 10 11 12

110 Helle Christensen

| Peter Rooke

Ceramics, Pottery



Useful and decorative pots for everyday use in garden studio; hand-built and wheel-thrown pottery for kitchen and table. 11am-6pm 18 Chester Street, East Oxford OX4 1SN. 07840 232449 vivien158.wixsite.com/helle-christensen OS

4 5 6 7 8 9 10 11 12

111 Sarah Wenden

| Lucy Phillips

Painting, Printmaking



Landscape paintings in oil & collage, plus abstract screen-prints influenced by the city. 11am-6pm (Thu 6-8pm) 62 Warwick Street East Oxford OX4 1SX www.sarahwenden.com OS

4 5 6 7 8 9 10 11 12

115 Magdalen Road Studios

Various

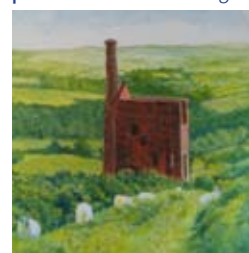
MAGDALEN
ROAD
STUDIOS

An opportunity to see a selection of exciting work from resident and associated artists of Magdalen Road Studios. 1pm-6pm 74-77 Magdalen Road East Oxford OX4 1RE magdalenroadstudios.com P | NS

4 5 6 7 8 9 10 11 12

116 Philip Burbidge

| Joan Holland Painting



Landscapes, seascapes & still lifes. Birds, ships, animals, flowers & expressions of emotion in colour & design. 11am-6pm (Tue/Thu 1-6pm) Magdalen Road Church, 41A Magdalen Road, East Oxford OX4 1RB 01865 245887 www.mrc-oxford.org W | R

4 5 6 7 8 9 10 11 12

117 Art & Craft 133

Various



A vibrant, varied & colourful selection of spinning and weaving by East Oxford Weavers; paintings, printmaking and photography. 12pm-6pm (Thu 12-8pm) 133 Hurst Street East Oxford OX4 1HE 07788 545580 anthea.clarke@icloud.com W | OS | D

4 5 6 7 8 9 10 11 12

112 ArtWorks

Various

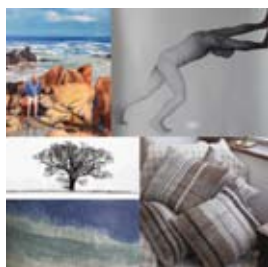


A very special 30th Anniversary exhibition of artwork from students and tutors old and new. 11am-5pm (Sat/Sun 11-6pm) SS Mary & John Primary School Bedford Street East Oxford OX4 1SU 07754 736078 artworks.org.uk W | OS | P | T | NS

4 5 6 7 8 9 10 11 12

113 St Mary and St John Primary School

Various



An exciting collection of student, staff and parent artwork from this actively creative school. 10am-5pm SS Mary & John Primary School Bedford Street, East Oxford OX4 1SU. 07754 736078 www.ssmj.oxon.sch.uk W | P | NS

4 5 6 7 8 9 10 11 12

114 Jane Hope OAS WOA

Painting



Squashes, trees, some plain air and possibly some people. Paintings in oil and pastel. 11am-6pm (Thu 11-8pm) Garden Studio 64 Argyle Street East Oxford OX4 1SS 07948 977459 www.janehope.co.uk OS

4 5 6 7 8 9 10 11 12

118 Becky Morgans OCG

Jewellery

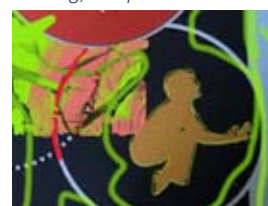


Handmade silver jewellery, using gold leaf, sea glass, casted sea urchins & fresh water pearls. 11am-6pm 24 Charles Street East Oxford OX4 3AS 07773 018984 www.beckyjjewellery.com OS

4 5 6 7 8 9 10 11 12

119 Everyone's an Artist

Painting, Sculpture



The New Garden of Mystery and Suspense. On Sat 11 & Sun 12 a group of performance artists will respond to the garden and river. 12pm-6pm 106 Fairacres Road East Oxford OX4 1TG 07748 966403 OS

4 5 6 7 8 9 10 11 12

120 Bridget Wheatley OCG

Jewellery



Original collections of handmade jewellery in a garden setting. Inspired by nature, mythology and the cosmos. 11am-6pm (Sun 11-4pm) 187 Campbell Road OX4 3NT 07887 501409 www.bridgetwheatley.com OS | P

4 5 6 7 8 9 10 11 12

121 Katherine Hughes | Sue Lyons

Mixed Media



Varied work covering still life, landscape, human figures, portraiture, birds and animals.
11am-5pm
28A Crescent Road
Temple Cowley
OX4 2PB
01865 776643
katherineihughes@yahoo.co.uk

D | R

4 5 6 7 8 9 10 11 12

122 Andrew Kay

Drawing



Humorous and surreal cartoon drawings, often hippopotamuses. Do come in and let them meet you.
12pm-6pm (Mon 6-8pm)
66 Crescent Road
Temple Cowley
OX4 2PB
01865 773861
invisibules.org
R

4 5 6 7 8 9 10 11 12

123 Hilary Dewey

Painting



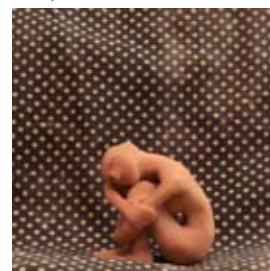
I work in many medium and styles looking for interesting textures and strong images.
11am-5pm
67 Crescent Road
Temple Cowley
OX4 2NY
01865 770884
deweysabroad@hotmail.com

W | D | P

4 5 6 7 8 9 10 11 12

127 Jorole | John Hawes

Sculpture, Textiles



In this world of unwanted commodity, Jorole takes the ordinary to fabricate the desirable. Also, small naked people.
12pm-6pm (Thu/Fri 4-8pm)
16 Lewin Close
Cowley
OX4 3JL
07967 330036
jorolearty@gmail.com
R | P

4 5 6 7 8 9 10 11 12

128 Calliste Lelliott

Drawing

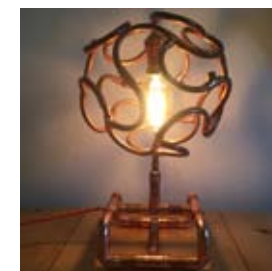


Ink sketches distilling self-help wisdom of the ages. Originals, prints and cards. Learn visual note-taking techniques at workshops.
12pm-6pm (Thu/Fri 4-8pm)
16 Lewin Close
Cowley OX4 3JL
07967 330036
medium.com/@digicalix
R | P | T

4 5 6 7 8 9 10 11 12

129 Oliver Skertchly

Mixed Media



Lamps, lampshades, chandeliers. From bedside table to ballroom. Upcycled, recycled, sometimes blatantly overcycled.
12pm-6pm (Thu/Fri 4-8pm)
16 Lewin Close
Cowley OX4 3JL
07971 456699
[/ollightindustries](https://www.instagram.com/ollightindustries)
R | P

4 5 6 7 8 9 10 11 12

124 Biddy Hudson OPC

Printmaking



Prints made with variety of processes: series include An Allotment Alphabet, from woodcuts, & Shadows on the Stairs.
11am-6pm
13 Junction Road
Temple Cowley
OX4 2NT
01865 749669

R | P

4 5 6 7 8 9 10 11 12

125 Victoria Sowter | Patrick Lingwood Various



Patrick captures Oxford cityscapes in stunning pen detail. Victoria creates entrancing, colourful images in various media.
11am-6pm
36 Don Bosco Close, Temple
Cowley OX4 2LD. 01865 499381
Artatpatrickandvictoria@gmail.com
OS

4 5 6 7 8 9 10 11 12

126 Charles Hampton

Painting



Portraits, landscapes and still life in oils. (Above: Timothy, Zimbabwe)
12pm-8pm (Sun 12-5pm)
80 Temple Road
Temple Cowley
OX4 2EZ
07549 753881
charleshamptonpaintings.wordpress.com
W | OS | R | P

4 5 6 7 8 9 10 11 12

130 Sally Levell OAS OPC | Sarah Bolles

Printmaking

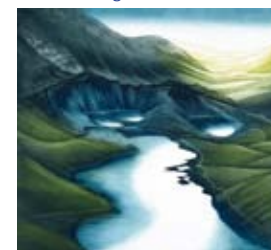


Three printmakers each with their own take on wild landscapes. The work is presented in an 18th century stone basement gallery.
11am-6pm (Fri 12-8pm)
7 Tree Lane (Garden Entrance)
Iffley OX4 4EY. 01865 748520
www.sallylevell.com
OS | R | P

4 5 6 7 8 9 10 11 12

131 Morna Rhys OAS OPC

Printmaking



Etchings of Welsh mountains and valleys, Cornish coasts and Oxfordshire landscapes, exhibiting in 18th century basement.
11am-6pm (Fri 12-8pm)
7 Tree Lane
Iffley OX4 4EY
01865 748520
www.mornarhys.co.uk

OS | D | R | P

4 5 6 7 8 9 10 11 12

132 Elaine Allender

Painting



New paintings of harbours, beaches, seascapes, landscapes and meadows. Limited edition prints and greetings cards.
11am-6pm
77 Courtland Road
Iffley OX4 4HZ
07870 929768
www.elaineallenderart.co.uk
OS | R | P

4 5 6 7 8 9 10 11 12

133 David Goode
Sculpture



Bronze sculptures and water features inspired by the imagery of folklore. Sculpture garden, studio and gallery.
11am-6pm
400 Meadow Lane
Iffley
OX4 4ED
07977 546087
www.david-goode.com
W | OS | R | P

4 5 6 7 8 9 10 11 12

134 David England
Sculpture



Unique stone garden sculpture. Open weekend 18th & 19th too.
10am-5.30pm
19A Manor Road
South Hinksey
OX1 5AS
01981 540832
www.davidengland.eu

W | OS | R | P (also open 18 & 19 May)

4 5 6 7 8 9 10 11 12

135 Pamela Armitage OCG
Glass



Beautiful fused glass in glorious colours. Bowls, coasters, garden glass, jewellery. Ample parking outside. Demos.
12pm-6pm
94 Wytham Street
South Oxford
OX1 4TW
01865 424699
pamarmitage.co.uk

W | OS | D | P

4 5 6 7 8 9 10 11 12

139 New Hinksey Arts
Various



An exhibition from local and established artists: from pencil drawings to art produced in various mixed media. Café.
PayPal.
11am-6pm (Sat 11th 11-9pm)
South Oxford Community Centre, Lake Street, OX1 4RP
01865 242666
www.southoxford.org
W | D | R | T

4 5 6 7 8 9 10 11 12

140 Jo Dixon
Mixed Media



Open studio exhibition of mixed media paintings and limited edition Giclee prints.
11am-6pm
15 Edith Road
South Oxford
OX1 4QB
07932 724232
www.jodixon.co.uk

OS | R

4 5 6 7 8 9 10 11 12

141 Melanie Donaldson
Painting, Printmaking



Colourful exhibition in open studio at Edith Road Workshops. Paintings, handmade prints, archival pigment prints, postcards and cards.
11am-6pm
Edith Road Workshops
15 Edith Road, OX1 4QB
www.melanie-donaldson.com
W | OS | P

4 5 6 7 8 9 10 11 12

136 David Bliss
Drawing, Painting



Oil paintings and drawings inspired in and around Oxford.
11am-6pm
32 Lincoln Road
South Oxford
OX1 4TB
01865 722481
davidblisspainter.com

4 5 6 7 8 9 10 11 12

137 Sophie Basilevitch
Printmaking



Bold colourful unique hand-pulled linoprints inspired by animals and nature.
1pm-8pm
10B Gordon Street
South Oxford
OX1 4RJ
[/beryoizamade](https://www.instagram.com/beryoizamade)

OS | D | R | P | T

4 5 6 7 8 9 10 11 12

138 Aline Stanway OCG
| Bruno Guastalla
Various



Exhibition in garden studio of recent work, including ceramic horses, thrown pieces and graphic works.
11am-6pm (Thu 3-10pm)
56 Lake Street, South Oxford
OX1 4RR
01865 244798
alinenstanwayceramics.com
OS | D | R | T

4 5 6 7 8 9 10 11 12

142 Valerie Mead OCG
Jewellery



Elegant contemporary designer jewellery in silver and coloured golds. Weekends and bank holiday only.
11am-6pm
Edith Road Workshops
15 Edith Road, South Oxford
OX1 4QB
01865 240809
www.valeriemead.co.uk

W | OS | T

4 5 6 7 8 9 10 11 12

143 Anna Opher
Jewellery



Unique contemporary handmade jewellery with an emphasis on texture, molten metal and splashes of colour.
11am-6pm
Edith Road Workshops
15 Edith Road
South Oxford
OX1 4QB
07960 753464
www.annaopher.com

W | OS | R

4 5 6 7 8 9 10 11 12

144 Sarah Spackman
Painting



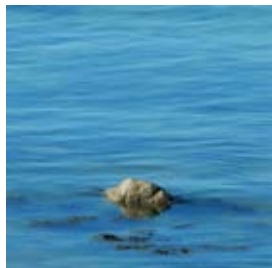
Oil paintings and drawings by a professional artist in a beautiful working studio.
11am-6pm
Edith Road Workshops
15 Edith Road
South Oxford
OX1 4QB
www.sarahspackman.com

OS | R

4 5 6 7 8 9 10 11 12

145 Gordon Stokes

Photography



The coast, sea and sky in Scilly, Cornwall and Outer Hebrides, plus Oxfordshire landscapes. Framed prints and a range of greetings cards. 11am-6pm
Edith Road Workshops
15 Edith Road, South Oxford
OX1 4QB. 01865 240809
www.gordonstokes.co.uk
W | OS

4 5 6 7 8 9 10 11 12

146 Jack Smith

Painting

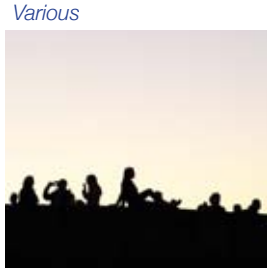


Great opportunity to see some beautiful paintings and the splendour of life! Pop in and have a look. Everyone welcome. 11am-6pm
12 Kinton Road
South Oxford
OX1 4PG
www.jacksmith.art
W | OS | R

4 5 6 7 8 9 10 11 12

147 St Matthew's Church and Community

Various



St Matthew's is a peaceful space for viewing works by local artists including photography, painting and printmaking. Refreshments available. 1pm-6pm
St Matthew's Church
Marlborough Rd, South Oxford
OX1 4LW. 07962 180980
www.stmatthewsoxford.org.uk
W | R | NS

4 5 6 7 8 9 10 11 12

151 Blackwell's Art & Poster Shop

Various



Oxford's only art prints and book shop are showing work from a small range of local artists in their spacious window display. 9.30am-6.30pm (Sun 11-5pm)
27 Broad Street
Oxford
OX1 3BS
01865 333641
www.blackwell.co.uk

4 5 6 7 8 9 10 11 12

152 LiterArties Shop

Various



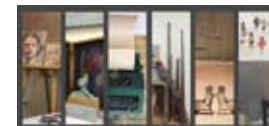
Exciting mix of artists capturing their creativity in oils, acrylics, charcoals, watercolours, including digital art and photography. 11am-6pm
Old Fire Station
40 George Street
Oxford OX1 2AQ
07976 946331
www.literarties.com

W | D | R | P

4 5 6 7 8 9 10 11 12

153 Studios at AOFs

Various



A unique opportunity to see inside the hidden artist studios at Arts at the Old Fire Station. 5pm-7pm (Sat 12-5pm)
Arts at the Old Fire Station
40 George Street
Oxford
OX1 2AQ
01865 263990
oldfirestation.org.uk/working-with-artists/artist-profiles

W | OS | R | NS

4 5 6 7 8 9 10 11 12

148 Modern Art Oxford

New Media, Photography



Renowned artist Akram Zaatar's photographic history of the Middle East, North Africa and the Arab diaspora. 10am-5pm
30 Pembroke Street
Oxford
OX1 1BP
01865 722733
www.modernartoxford.org

W | R | NS

4 5 6 7 8 9 10 11 12

149 Oxford Pride

Various



OXFORD PRIDE
2019

#HoldTight: digital art, mixed media, painting & photography. 10am-5pm (Sunday 12-5pm)
University Church of St Mary the Virgin, The High Street
Oxford OX1 4BJ
07875 515499
www.oxford-pride.org.uk

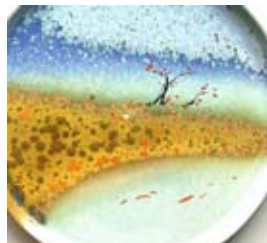
W | NS

4 5 6 7 8 9 10 11 12

22-27 May

150 Modern Chinese Art

Various



Cherwell College Oxford hosts new masterpieces by modern Chinese artists: ceramics, drawing, painting, photography and more. 11am-5pm
Cherwell College Oxford
51 Cornmarket Street
(access via Frewin Court)
Oxford OX1 3HA
www.cherwell-college.co.uk
OS

4-27 May

4 5 6 7 8 9 10 11 12

154 Painting For Freedom

Painting



Art, spirituality and justice: artists in support of Freeset. Thu 9th: preview party & launch 6-9 pm. 11am-8pm (Thu 6-9pm)
New Road Baptist Church
Bonn Square
Oxford
OX1 1LQ
01865 798235
newroad.org.uk
W | R

4 5 6 7 8 9 10 11 12

155 Casimira Mostyn

Mixed Media, Painting



Quirky naïve whimsical folk-art artist; original affordable animal paintings, mixed media, prints and greetings cards. 7am-7pm (Sat 7.30-7pm, Sun 8-7pm)
Art Café (opposite Westgate)
14 Bonn Square
Oxford OX1 1EU
01865 242464
www.artcafeoxford.co.uk

R

4 5 6 7 8 9 10 11 12

156 Victoria Stanway OAS

Painting



Exhibition of paintings derived from memories and the imagination, dredging up all sorts of oddities. 7am-7pm (Sat 7.30-7pm, Sun 8-7pm)
Art Café (opposite Westgate)
14 Bonn Square, Oxford
OX1 1EU. 01865 24264
www.artcafeoxford.co.uk

R

4 5 6 7 8 9 10 11 12

157 OVADA

Various



Digital art, drawing, mixed media, new media, painting, photography, printmaking, sculpture and more in warehouse gallery space. 12pm-6pm
14A Osney Lane
Oxford
OX1 1NJ
01865 200979
www.ovada.org.uk

W | NS (& 16-19 & 23-26 May)

4 5 6 7 8 9 10 11 12

160 Art at Home

Various



Four artists collaborate to present their 'Art at Home' collections: ceramics, textiles, paintings and photography. 11am-6pm (Thu/Fri 11-8pm, Sun 10-4pm)
15 East Street
Osney Island
OX2 0AU
07855 718850
bianca.elgar@biancaelgar.com

OS

4 5 6 7 8 9 10 11 12

158 The Jam Factory, Oxford

Various



One of the city's most intriguing contemporary art spaces where Frank Cooper once boiled his famous marmalade. 8am-10pm
The Jam Factory
4 Hollybush Row
Oxford OX1 1HU
01865 244613
www.thejamfactoryoxford.com

W | R (runs until 27th)

4 5 6 7 8 9 10 11 12

161 Annie Wootton OCG | Antoinette Ibsen

Drawing, Painting, Sculpture



Paper pulp sculptures and drawings by Annie. New paintings by Antoinette. 12pm-6pm (Thu 12-8pm)
69 Bridge Street
Osney Island
OX2 0BD
07562 244043
louiseandbob@gmail.com

4 5 6 7 8 9 10 11 12

159 Elaine Kazimierczuk

Painting



Semi-abstract oil paintings of the natural world. Winner of 2018 Mary Moser Award. 11am-6pm (Thu 11-8pm)
2 North Street
Osney Island
OX2 0AY
07949 382555
elainekazimierczuk.com

4 5 6 7 8 9 10 11 12

162 Louise Summers | Bob Summers

Printmaking, Miscellaneous



Rag rugs, relief prints, collage, baskets and rushwork. Tea & coffee. Other artists too. 12pm-6pm (Thu 12-8pm)
69 Bridge Street, Osney Island
OX2 0BD
07562 244043
louiseandbob@gmail.com

4 5 6 7 8 9 10 11 12

163 Derek Elliott

Furniture, Wood



A mature selection of bespoke modern furniture designed by Derek Elliott. 11am-6pm (Wed 11-1pm)
57 West Street
Osney Island
OX2 0BH
07771 707178
www.outofthewood.co.uk

4 5 6 7 8 9 10 11 12

166 Helen C White

Photography



Joining wocART to explore "Horizons" and beyond. 11am-6pm (Thu 11am-8pm)
West Oxford Community Centre
Botley Road
OX2 0BT
07947 567496

W | R | P

4 5 6 7 8 9 10 11 12

164 Miranda Miller

Mixed Media, Photography



Miranda interprets her own 'horizons' in mixed media as part of the wocART group exhibition. 11am-6pm (Thu 11-8pm)
West Oxford Community Centre
Botley Road
OX2 0BT
07947 567496

W | R | P

4 5 6 7 8 9 10 11 12

167 Rachel Gee | Miranda Miller | Lois Muddiman

Ceramics, New Media, Sculpture



New venue. 3 artists explore the secluded REALM of the domestic space in Medley Manor Farm. Turn right 1/2 way down Binsey Lane. Beware potholes. 11am-6pm
Medley Manor Farmhouse
Binsey Lane OX2 0NJ
07984 637943
www.theartrealm.com

4 5 6 7 8 9 10 11 12

165 Andrew J Walker | Deborah Williams OAS

Various



Exploring "horizons" through a rich variety of media, two artists exhibit as part of wocART: ceramics, drawing, painting, mixed media and more. 11am-6pm (Thu 11-8pm)
West Oxford Community Centre
Botley Road OX2 0BT
01865 245761
www.woca.org.uk

W | R | P

4 5 6 7 8 9 10 11 12

168 Old School Art

Various



Come be inspired, provoked and cheered by our eclectic art collective of painting, pottery, and photography. Open four days only. 11am-8pm
The Old School
140 North Hinksey Lane
OX2 0LZ. 07545 379856
oldschoolartox2@gmail.com

4 5 6 7 8 9 10 11 12

169 Jo Salmon
Painting



Fun and colourful watercolours for adults and children to enjoy.
9am-5pm
Café (above Coop Supermarket)
Westway Shopping Centre
Botley
OX2 9LP

R | P (until 25 May; closed Sun)
4 5 6 7 8 9 10 11 12

170 Ali Hogg | Jane Hogg
Various



New work for 2019 and other original artwork, prints and cards in our Botley studio.
10am-6pm (Thu 10-8pm)
42 Arthray Road
Botley
OX2 9AB
07811 568874
thehoggs42@gmail.com

W | OS
4 5 6 7 8 9 10 11 12

171 Mark Clay
Various



A range of drawings, prints & mixed media artwork, taking inspiration from the rapid changes taking place around us.
10.30am-5.30pm (Thu 6-8pm)
88 Arthray Road, Botley
OX2 9AB
07772406468
markrclay@icloud.com
W | OS | R | P

4 5 6 7 8 9 10 11 12

172 Lihua Yuan
Drawing, Painting



Flowers, fruit, vegetables, birds, cats and other animals in Chinese and Western styles.
11am-6pm
45 Cedar Road, Botley
OX2 9ED
01865 200648
cookyuan45@gmail.com

P
4 5 6 7 8 9 10 11 12

173 Ian Kensey
Digital Art, Photography



A collection of my best photographs taken over the last three years.
11am-6pm
12 Sycamore Road
Botley
OX2 9EJ

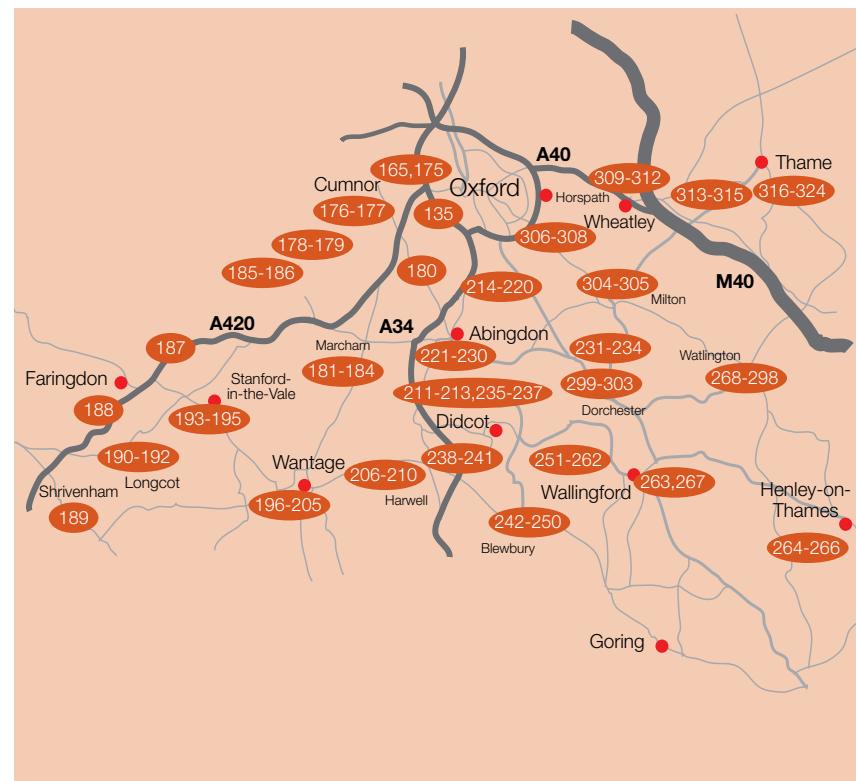
NS 25-26 May
4 5 6 7 8 9 10 11 12

174 Louie Memorial Pavilion
Various



Following last year's success, another exhibition from the Botley/North Hinksey community, showing work by all ages & abilities. 11am-4pm
Louie Memorial Pavilion
Arnold's Way, Botley OX2 9JD
07977 009360
www.facebook.com/louiememorialpavilion
R | P | NS

4 5 6 7 8 9 10 11 12



South Oxfordshire Map

This map is to provide approximate guidance only. Please use the venue addresses provided with a road map or SatNav to locate specific exhibitions.

Additional Information

Visit the Artweeks website to see, for many exhibitors, further details, artist biographies, additional pictures of artists' work and to check for any changes and updates.

Local Area Trails

Some groups of artists, coordinated by local volunteer organisers, have put together more detailed trail maps to help you navigate from venue to venue. Many of these can be downloaded at www.artweeks.org

175 William Cotterill*Painting*

Gallery exhibition of William Cotterill's abstract and semi-abstract paintings. Prints available in gallery shop.

11am-6pm
2 SR Art Space
2 Springfield Road
Botley
OX2 9HJ
07885 160078

www.williamcotterill.co.uk

11 12 13 14 15 16 17 18 19

176 Sue Side OAS WOA**David Williams WOA****Stephanie Monteath***Various**"When The Fields Are Still"*

Detailed drawings, etchings, organic sculptures and sumptuous textiles inspired by Matthew Arnold's 'Cumner hills'.
11am-6pm

39 Robsart Place, Cumnor
OX2 9QT
01865 865139

OS | D | R | P | [sue.side_artist](https://www.instagram.com/sue.side_artist)

11 12 13 14 15 16 17 18 19

177 Sarah Bond WOA*Painting*

Vibrant seascapes and landscapes of Cornwall and beyond. Colourful contemporary paintings of Oxford in light bright Archangel Studio.
11am-6pm

1 Abingdon Road, Cumnor
OX2 9QN. 07989 393269

www.sarahbondart.com

OS | R | P

11 12 13 14 15 16 17 18 19

181 Iain Shield Studio**Pottery***Ceramics*

Functional stoneware pottery. Distinctive glazes with lovely forms. Reduction fired, ash glazes.

12pm-4pm
Pear Tree Cottage
7 Packhorse Lane, Marcham
OX13 6NT. 07818 430173

www.shieldstudiopottery.com
D | P

11 12 13 14 15 16 17 18 19

182 Pip Stacey*Glass*

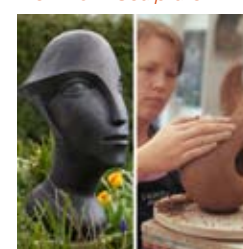
Fused, cast and pressed glass: art and jewellery. Evening and weekend workshops too.

12pm-4pm
Pear Tree Cottage
7 Packhorse Lane
Marcham OX13 6NT
01865 392183

featheredglass.com

OS | D | R | P | T

11 12 13 14 15 16 17 18 19

183 Sculpture Workshops**Oxford with Beatrice****Hoffman** *Sculpture*

Sculptor and tutor Beatrice Hoffman opens her picturesque garden and studio, to show her students' and her own sculptures.

11am-6pm
Lime Tree Cottage, Garford
nr Abingdon OX13 5PF

01865 391502
www.beatricehoffman.co.uk

R | P | T | NS

11 12 13 14 15 16 17 18 19

178 Village Art*Various*

Sixteen artists including new faces showcase their rich and engaging work: painting, ceramics, printmaking, textiles and much more.

10am-4.30pm
Appleton Village Hall
Oaksmere, Appleton
OX13 5JS. 01865 863850
moalner9@aol.com

W | D | R | P

11 12 13 14 15 16 17 18 19

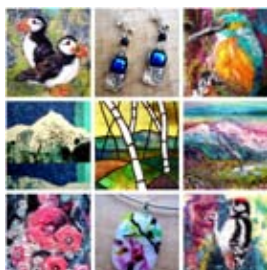
179 Oxfordshire Chinese**Brush Painting Group***Painting*

A celebration of Chinese Brush Painting in all its styles on paper and silk. As part of Village Art (venue 178).
10am-4.30pm

Appleton Village Hall
Oaksmere
Appleton
OX13 5JS
01235 553805

W | D | R | P | NS

11 12 13 14 15 16 17 18 19

180 Elaine Newson WOA*Various*

A vibrant and varied exhibition of glass, jewellery, textiles, paintings and cards in a tranquil village location. Ample parking.

11am-6pm
Sanctuary, 32 The Field
Dry Sandford, nr Abingdon
OX13 6ED. 01865 321000
www.elainenewson.com

D | R | P | T

11 12 13 14 15 16 17 18 19

184 Abingdon Prep School*Various*

Join us to celebrate the art, craft and design of students from Reception to Year 8. Please see school website for viewing times.

Abingdon Prep School
Josca's House
Frilford nr Kingston Bagpuize
OX13 5NX
01865 391570
www.abingdonprep.org.uk

R | P | NS

11 12 13 14 15 16 17 18 19

185 Rosie Taylor**| Debbie Martin** *Various*

Two local artists with complementary styles, sharing their talents for still-life drawing, landscape painting and printing.

11am-4pm (Fri 10-2pm)
The Elms, Netherton Lane
Fyfield nr Abingdon
OX13 5LR. 07747 863643
debbie.v.jones@hotmail.com

R

11 12 13 14 15 16 17 18 19

186 Chris Wildi**| Miles Superverge***Painting, Sculpture*

Abstract, landscapes and tigers.

11am-6.30pm
Marsh Cottage, Marsh Lane
Fyfield nr Abingdon
OX13 5QP
07512 292673
milessuperverge.co.uk

W | OS | R | P

11 12 13 14 15 16 17 18 19

187 Yvonne Robinson OAS
| Marjut Roberts OAS
| Seija Wentworth Various


Contemporary & original ceramics, interiors & landscapes using collage & printmaking, & charming oil, watercolour & pastel pictures. 11am-6pm
 The Reading Room, Littleworth nr Faringdon SN7 8ED
 01367 710284
yvonne-robinson-art.weebly.com
 W | D | R | P

11 12 13 14 15 16 17 18 19

188 Great Coxwell Artists
Various


Ceramics, jewellery, mosaics, painting, pastels, quilts, sculpture, upholstery, wirework, woodwork! Coffees, lunches, teas all day. 11am-5pm
 Holloway House, Great Coxwell nr Faringdon SN7 7LZ
 01367 241707
karen@vogt.org.uk
 W | O | S | D | R | P

11 12 13 14 15 16 17 18 19

189 Tara Parker-Woolway OAS
Painting


A stunning new collection of paintings inspired by landscapes, seascapes and wildlife awaits in Tara's new studio space. All welcome. 12pm-5pm (or by appt)
 The Studio, 6 Church Row Bourton SN6 8JG.
 07796 696077
parkerwoolwayartist.co.uk
 O | S | R | P | T (also open 4-6 May)

11 12 13 14 15 16 17 18 19

193 Sue Drew | Ben Drew
Ceramics, Mixed Media


Large stoneware ceramics, domestic & decorative pottery & mixed media work. Contact for adult & children's ceramic workshops. 12pm-6pm
 3 Church Street Shellingford SN7 7QA
 01367 710471
btinternet.com

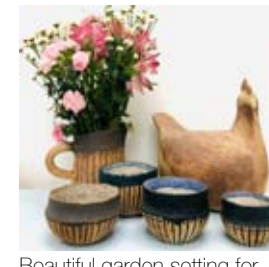
W | O | S | P | T

11 12 13 14 15 16 17 18 19

194 Anne Mills
Digital Art, Wood


Touch wood and leather of hand-crafted bellows. Be touched by whimsy, imagination of digital art. 12pm-5pm
 22 Bow Road Stanford in the Vale nr Faringdon SN7 8JB
www.annemills.net

11 12 13 14 15 16 17 18 19

195 The Garden Studio
Various


Beautiful garden setting for handbuilt pottery, collage art, handmade jewellery, glass art and bespoke furniture. 11am-6pm
 53 High Street Stanford in the Vale, nr Faringdon SN7 8NQ
 01367 710358
norikomacfarlane@btinternet.com
 W | O | S | R | P

11 12 13 14 15 16 17 18 19

190 Helen Pakeman
| Emma Ablitt Glass


Come and meet the artists and see our new work in printmaking, stone carving and drawing in Longcot Chapel. 11am-6pm
 The Methodist Chapel King's Lane, Longcot SN7 7SS. 07771 616475
www.helenpakeman.co.uk
 R | P

11 12 13 14 15 16 17 18 19

191 Pat Elmore RBA
Sculpture


Sculpture garden & gallery: over 100 works. Dogs and children welcome. 11am-6pm
 Nutford Lodge (next to the King & Queen Pub) Longcot SN7 7TW
 01793 782258

W | O | S | D | P | T

11 12 13 14 15 16 17 18 19

192 Sharon Rich
Sculpture


Unique, hand-carved stone sculpture exhibited in a country garden and studio. 2pm-5pm (Sat/Sun 11-5pm)
 Henleaze Farm Bungalow Fernham (on B4508 next to Farmer Gow's) nr Faringdon SN7 7PR
 01793 782382
sharonrichsculpture.co.uk
 O | S | D | R | P

11 12 13 14 15 16 17 18 19

196 Leila Anderson
| Marion Flower
Various


Two exciting artists, two different approaches to the natural world in watercolour & acrylics; mixed media, cards, glass & prints. 11am-6pm
 Childrey Village Hall High Street, Childrey OX12 9UE
 07794 357503
leila.artstudio@gmail.com
 W | O | S | D | P

11 12 13 14 15 16 17 18 19

197 Johannes von Stumm
OAS *Sculpture, Jewellery*


I am preparing new ideas for my 'Immaterial Series'. These human figures - made out of space - are filled with darkness or light. 11am-6pm
 Workshop at South Fawley Farm South Fawley, nr Wantage OX12 9NL. 07796 448522
www.vonstumm.co.uk
 W | O | S | R | P

11 12 13 14 15 16 17 18 19

198 John Gunter
Painting, Mixed Media, Wood


Striking paintings on canvas, drift wood, reclaimed wood and slate depicting landscapes, seascapes and sea life. 11am-6pm
 4 Segsbury Road Wantage OX12 9XR
 01235 763888
john-gunter.co.uk

R

11 12 13 14 15 16 17 18 19

199 Wantage Camera Club Photography



An exhibition of monochrome and colour prints produced by members of Wantage Camera Club. 9-5.30pm (Mon/Fri 9-8, Thu 9-1, Sat 9-4.30)

Wantage Library, Stirlings Road
Wantage OX12 7BB

01235 762291

wantage.library@oxfordshire.gov.uk

W | P (also 6 & 27 May)

11 12 13 14 15 16 17 18 19

200 Beth Sparrow Leather



Leather belts and accessories all handmade by Beth Sparrow in her open studio. 11am-6pm (Thu 11am-8pm)

Meryn
Unit 5 Arbery Arcade

Wantage

OX12 8BL

07890 628558

www.meryn.co.uk

W | OS | D | R | P

11 12 13 14 15 16 17 18 19

201 Patsy Jones Painting, Printmaking



Looking at Landscape: a mixture of paintings and traditional and experimental prints. 9.30am-4pm (7th 12-4pm, 18th 9.30-3.30)

Vale & Downland Museum
19 Church Street, Wantage

OX12 8BL. 01235 764258

www.patsyjones.co.uk

W | R (also 7th-10th May)

11 12 13 14 15 16 17 18 19

205 Jo Marshall WOA Ceramics, Pottery



Unique, striking & colourful handmade stoneware ceramics. 11am-5pm (Thu/Fri 12-6pm)

Hare Cottage
Townsend, Grove

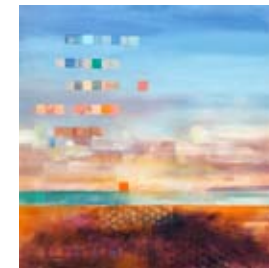
OX12 0AX

www.moonhareceramics.co.uk

OS | D | P

11 12 13 14 15 16 17 18 19

206 Lin Kerr OAS Painting



Lin's latest oil paintings: contemporary landscape & atmospheric skies at Ardington School. Demonstrations all day. 11am-6pm

Ardington School of Crafts
The Old School, School Road

Ardington nr Wantage

OX12 8PN. 01235 833433

linkerrdesign.co.uk

W | OS | D | R | P

11 12 13 14 15 16 17 18 19

207 Ardington School of Crafts Various



Take this chance to see top artists demonstrating here at Ardington School of Crafts. 11am-3pm

Ardington School of Crafts
The Old School, School Road
Ardington nr Wantage

OX12 8PN

01235 833433

www.ardingtonschool.com

W | D | P

11 12 13 14 15 16 17 18 19

202 Andrew Moore Painting



Light, form and colour. Interpretations of timeless land and seascapes. Oil paintings. 9.30am-3.30pm

Vale & Downland Museum
19 Church Street

Wantage

OX12 8BL

01235 771447

vale.downland@gmail.com

R

11 12 13 14 15 16 17 18 19

203 Jill Smith Painting, Printmaking



Traditional and semi-abstracted paintings, prints and textural art in watercolour, oil and acrylic on the concept of the passage of time. 9.30am-4pm (7th 12-4, 18th 9.30-3.30)

Vale & Downland Museum
19 Church Street, Wantage

OX12 8BL. 07802 873035

www.jillsmithart.co.uk

W | R

(also 7th-10th May)

11 12 13 14 15 16 17 18 19

204 Jill Cooper OAS | Wendy Dobbenie Mosaics, Textiles



Paintings in fabrics of people and places and wildlife mosaics created using vintage china. 12pm-5pm

16 Larkhill, Wantage
OX12 8HW. 07858 783048

jillcooper@waitrose.com

W | OS | P

11 12 13 14 15 16 17 18 19

208 Nadine Haigh Photography



Expressive and interpretive fine art photography with a focus on local landscapes. 10am-12pm & 2.30pm-6pm

The Eyston Arms
High Street, East Hendred

nr Wantage

OX12 8JY

07793 272005

www.thegildedleaf.co.uk

R | P

11 12 13 14 15 16 17 18 19

209 Mariana Acevedo Painting, Photography



Mindfulness art inspired by nature & everyday life. Open studio showing works in oil, ink & prints in various sizes. Workshops. 11am-6pm (Fri 11-8pm)

Ascension Cottage, Horn Lane
East Hendred, nr Wantage

OX12 8LD. 07740 792054

www.marianaacevedo.com

OS | R | P | T

11 12 13 14 15 16 17 18 19

210 Clay Works Ceramics



17 potters, ceramicists & sculptors all working with clay. Stunning pieces, demos & have a go sessions. Pottery supplies. Outdoor firings. 10am-6pm

The Cobb, Muster Point
Featherbed Lane, East Hendred

Wantage OX12 8JF

07979 356025

www.oxfordshirearts.co.uk

W | OS | D | R | P | T

11 12 13 14 15 16 17 18 19

**211 Lyn Harrison
| Jo Bosley**
Ceramics


Quirky and unusual stoneware-crank ceramics for the home and garden.
11am-6pm
21 The Green
Steventon, nr Abingdon
OX13 6RR
07714 761638
steventongreenpottery.com
OS | P

11 12 13 14 15 16 17 18 19

214 Sunningwell School of Art
Various


Exhibition of drawing, painting, sculpture and pottery.
10am-5pm
The Old School
Sunningwell
nr Abingdon
OX13 6RD
01865 730442

W | P | NS 25-27 May

11 12 13 14 15 16 17 18 19

212 Mary Reade
Ceramics


Eclectic ceramics both handbuilt and thrown, exhibited in the artist's garden studio.
11am-6pm
33 The Green
Steventon
nr Abingdon
OX13 6RR
01235 831261

OS | D | P

11 12 13 14 15 16 17 18 19

213 Carolyn Hawkes
Painting


Vibrantly coloured landscapes and abstract paintings, reflecting my interest in pathways and natural phenomena.
11am-6pm (Fri 11am-8pm)
The Gallery Upstairs
28 Lammas Land
Drayton nr Abingdon
OX14 4GG. 07773 677737
www.carolynhawkes.co.uk
OS | R | P

11 12 13 14 15 16 17 18 19

215 Mags Cuttle
Ceramics


Beautiful, functional stoneware exhibited in a relaxed studio setting. Also, try the wheel!
11am-6pm (Thu/Fri 11-8pm, Sun 10-2pm)
141 Upper Road
Kennington OX1 5LR
07722 212835
magscuttle@gmail.com

W | OS | D | R | P | T

11 12 13 14 15 16 17 18 19

216 Leila Javadi
Painting, Sculpture


Adventure-artist, Leila paints her way to the Arctic & beyond. Dream it. Do it. Paint it. (Just not always in that order).
11am-3pm
56 Kennington Road
Kennington
OX1 5PB
07455 143382
whitewintergallery.com

W | OS | R | T

11 12 13 14 15 16 17 18 19

217 Susan Wheeler OAS
OPC Printmaking


Linocuts, etchings and mono prints by 3 professional printmakers in village near Thames path. Demonstrations. Tea and cake in the garden. 11am-6pm
115 Lower Radley
nr Abingdon OX14 3BA
01235 525803
susanwheelerprints.co.uk
OS | D | R | P | T

11 12 13 14 15 16 17 18 19

220 Sewell Centre Gallery
Radley College
Sculpture


Innovative & interactive installation art & constructivist sculpture by internationally-recognised artist Willow Winston.
10am-4pm
Sewell Centre Gallery
Radley College, Abingdon
OX14 2HR. 01235 543039
radley.org.uk/sewell-centre-gallery

W | P

11 12 13 14 15 16 17 18 19

218 Rose Bradford OPC
Printmaking


Etchings, linocuts, mono-prints and demonstrations by 3 professional printmakers in studio near Thames Path. Refreshments in the garden.
11am-6pm
115 Lower Radley
nr Abingdon OX14 3BA
01235 525803
quiet-rose.wixsite.com
OS | D | R | P | T

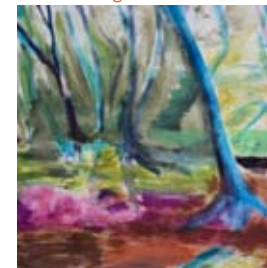
11 12 13 14 15 16 17 18 19

221 Peach Croft Barn
Artists
Various


New work by painters, potters, jewellers, textile artists and a sculptor in a beautiful barn setting. Daily demos at 2pm. 10am-5pm
Peach Croft Farm Barn
Twelve Acre Drive, Abingdon
OX14 2HP. 01235 520936
www.peachcroft.co.uk

W | D | R | P

11 12 13 14 15 16 17 18 19

219 Rahima Kenner OAS
OPC WOA
Printmaking


Etchings & colourful monoprint painting. Lyrical landscape, birds, journeys, contemplations. Lovely rural setting in Radley village.
11am-6pm
115 Lower Radley, nr Abingdon
OX14 3BA. 01865 723410
www.rahimakenner.com
OS | D | R | P | T

11 12 13 14 15 16 17 18 19

222 Fiona Chappelle
Ceramics


FICH ceramics: functional contemporary thrown ceramics which add elegance, simplicity and colour into your home.
11am-6pm
11 Sellwood Road
Abingdon
OX14 1PE
07760 993855
www.fichceramics.co.uk

OS | D | R | P

11 12 13 14 15 16 17 18 19

223 Clova Stuart-Hamilton

Painting



Richly coloured still lifes, interiors and life studies in oil, distemper, gouache, ink and oil pastel by professional painter.

11am-4pm

Our Lady's Abingdon Senior School, Radley Road
Abingdon OX14 3PS
01865 556307

clova-stuart-hamilton.co.uk
W|P

11 12 13 14 15 16 17 18 19

224 Helen Holden

Ceramics



Handbuilt ceramics, experimenting with textural surfaces and clay possibilities.

11am-4pm

Our Lady's Abingdon Senior School
Radley Road
Abingdon
OX14 3PS
07703 346885

zhelenholden@gmail.com

W|P

11 12 13 14 15 16 17 18 19

225 Dionne Freeman

Painting



Showcasing new works exploring Abingdon and local landscapes through layered drawings and paintings.

10am-1pm (Fri 3-6pm)

23 John Mason Road
Abingdon
OX14 2EN

www.dionnefreeman.com

W|P

11 12 13 14 15 16 17 18 19

229 Wendy Hughes OAS

Textiles



Colour, texture, form. Exhibition of textile art.

11am-6pm

St Ethelwold's House
30 East St Helen Street
Abingdon
OX14 5EB
01235 555486

W|OS|R

11 12 13 14 15 16 17 18 19

230 Oxfordshire Mind

Various



Colour. Sound. Emotion. Creative ways exploring the connections between senses, emotions and various art expressions.

11am-3pm

Mind in Abingdon
The Charter, Broad Street
Abingdon
OX14 3LZ
01235 537424
oxfordshiremind.org.uk

W|D|R|P|NS

11 12 13 14 15 16 17 18 19

231 Charlotte Storrs

Ceramics



Functional stoneware, all wheel thrown. Pottery in beautiful secret garden close to the Thames. Demos throughout the day.

12pm-5pm

The Pottery, 8 The Green Culham
nr Abingdon OX14 4LZ
01235 520395

charlottestorrs-stoneware.co.uk
OS|D|R|P

11 12 13 14 15 16 17 18 19

226 Sophie Snaith

Jewellery



Transforming ideas into creations that you can wear and treasure forever. Bespoke silver & gold jewellery.

11am-6pm (Mon-Wed & Fri 11-3.30pm, Thu 11-8pm)

91 Oxford Road, Abingdon
OX14 2AB

07876 502585

sophiemariejewellery.com

W|OS|R|P

11 12 13 14 15 16 17 18 19

227 Dougie Simpson

Painting



Dougie is an enthusiastic contemporary artist specialising in watercolour of Oxfordshire villages and countryside.

10am-4pm (Thu 10-7pm, Fri/Sat 10-5pm)

St Nicolas' Church
18-19 Market Place, Abingdon
OX14 3JD. 07801 742066

dougie.simpson@mac.com

W

11 12 13 14 15 16 17 18 19

228 Abbey Group

Glass, Painting



Inspired paintings and creative glass by five talented local artists.

10am-4pm (Thu 10-7pm, Fri/Sat 10-5pm)

St Nicolas' Church
18-19 Market Place
Abingdon
OX14 3JD
07801 742066

dougie.simpson@icloud.com

W

11 12 13 14 15 16 17 18 19

232 Nathalie Hamill OCG

| Kate Coker OCG

Ceramics, Jewellery



Contemporary silver and gold jewellery by Kate and Raku ceramics by Nathalie.

12pm-5pm

5 The Nursery, Sutton Courtenay
OX14 4UA. 01235 847048

www.nathaliehamill.com

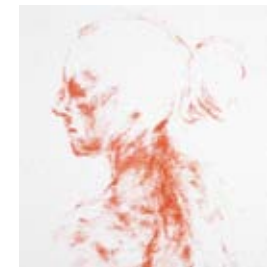
www.katecoker.co.uk

W|OS|D|P

11 12 13 14 15 16 17 18 19

233 Appleford Life Drawing

Drawing



Group show of figure drawings from the Appleford Life Drawing Sunday sessions.

12pm-4pm

Appleford Village Hall
Main Road
Appleford
OX14 4PF

[/applefordlifedrawing](https://www.facebook.com/applefordlifedrawing)

W|R|P|NS

11 12 13 14 15 16 17 18 19

234 Appleford Arts

Various



Group exhibition on the theme of the Water of Life in the inspirational setting of St Peter & St Paul Church, Appleford-on-Thames. 11am-6pm

Church of St Peter and St Paul
Church Street
Appleford OX14 4QE

07810 838669

[/applefordarts](https://www.facebook.com/applefordarts)

R|P|NS

11 12 13 14 15 16 17 18 19

235 Robert Strange OAS |
Ken Organ OAS Various


A variety of original and affordable portraits, still-life, landscapes and prints by professional artists.
 10am-5pm (Sun 12-5pm)
 St Blaise Church, High Street
 Milton nr Abingdon
 OX14 4EW. 01235 820966
www.robert-strange.co.uk
www.kenorganart.com
 W | D | R | P

11 12 13 14 15 16 17 18 19

236 Malcolm West
Sculpture


Figurative sculpture inspired by dance and mythology. I am sculpting at the venue.
 10am-5pm (Sun 12-5pm)
 St Blaise Church, High Street
 Milton nr Abingdon
 OX14 4EW
 07977 508138
www.mwad.co.uk
 W | D | R | P

11 12 13 14 15 16 17 18 19

237 Tom Koster | Malcolm Moor Pottery, Sculpture


Contemporary stoneware & porcelain wheel-thrown pottery; abstract bronze & bronze resin sculpture.
 10am-5pm (Sun 12-5pm)
 St Blaise Church, High Street
 Milton nr Abingdon
 OX14 4EW. 01235 834869
malcolmmoortart.com
tomkostersculpture.com
 W | D | R | P

11 12 13 14 15 16 17 18 19

241 Cornerstone Arts Centre
Various

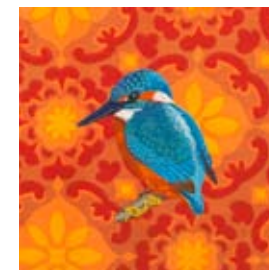

Collective exhibition of over 45 local artists' work on the theme of Woodland.
 10am-9pm (Sun 11-4pm)
 Cornerstone Arts Centre
 25 Station Road, Didcot
 OX11 7NE
 01235 515144
www.cornerstone-arts.org
 W | OS | R | T (runs 4th-26th May; closed Mon)

11 12 13 14 15 16 17 18 19

242 Charlotte Houlihan
Painting


Life paintings and studies uncovering the beauty and expression of the human figure.
 10am-6pm
 Blewbury Clubhouse
 Boham's Road
 Blewbury
 OX11 9HF
 07787 990716
www.charlottehoulihan.com
 W | P

11 12 13 14 15 16 17 18 19

243 Yvette Phillips
Textiles


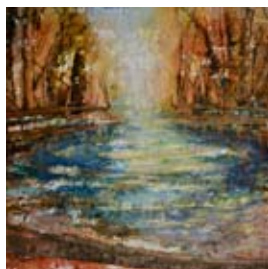
Beautiful textile collages using vintage fabrics with hand and free-motion machine embroidery.
 10am-6pm
 Blewbury Clubhouse
 Boham's Road
 Blewbury OX11 9HF
 07880 700231
www.yvettephillipsart.com
 W | P

11 12 13 14 15 16 17 18 19

238 Restore
Various


A garden trail showcasing artwork from Restore Fleet Meadow: drawing, mosaics, painting, pottery, sculpture and more.
 10am-3pm (Sat 10-2pm)
 Restore Ltd, Fleet Meadow
 Sandringham Road
 Didcot
 OX11 8TP. 01235 817215
jo.hetherington-reid@restore.org.uk
 W | P

11 12 13 14 15 16 17 18 19

239 Susan Ganney
Mixed Media


Susan paints in mixed media creating contemporary local landscapes and studies from nature.
 10am-9pm (Sun 11-4pm)
 Cornerstone Arts Centre
 25 Station Road
 Didcot OX11 7NE
 01235 515144
www.susanganney.com
 W | R | P (runs 4th-26th May; closed Mon)

11 12 13 14 15 16 17 18 19

240 Bee Thomas
Painting


Landscapes in acrylic on canvas, wood panels & in print.
 10am-9pm (Sun 11-4pm)
 Cornerstone Arts Centre
 25 Station Road
 Didcot
 OX11 7NE
www.beethomasartist.com
 W | R | P (runs 4th-26th May; closed Mon)

11 12 13 14 15 16 17 18 19

244 Eleanor Wong
Painting


Conceptual painter exploring the free-thinking nature of children.
 10am-6pm
 Blewbury Clubhouse
 Boham's Road
 Blewbury
 OX11 9HF
www.eleanorwongart.com
 W | P

11 12 13 14 15 16 17 18 19

245 Susanna Brunskill
Painting


Colourful paintings, mainly original oils, in my cottage garden studio. Another ceramics exhibitor here, plus four other artists close by.
 11am-6pm
 Twitten, Aston Street,
 Aston Tirrold
 nr Didcot OX11 9DQ
 01235 851762
www.susannabrunskill.uk
 OS | R | P

11 12 13 14 15 16 17 18 19

246 Lucy Burletson
Ceramics


Quirky textural ceramics inspired by nature and handmade with joy.
 11am-6pm
 Twitten, Aston Street
 Aston Tirrold
 nr Didcot OX11 9DQ
 07789 454684
lucyburletson.co.uk
 OS | R | P

11 12 13 14 15 16 17 18 19

247 Helen J Young

Painting



My latest paintings with another painter and a jeweller. Two other studios in the village.
11am-6pm
Springfield House, Baker Street
Aston Tirrold
nr Didcot OX11 9DD
07598 964286
www.helenjyoung.com
OS | R | P

11 12 13 14 15 16 17 18 19

248 Peter Lancaster

Painting



Contemporary still life paintings using strong bold colours with a strong basis in traditional accurate drawing techniques.
11am-6pm
Springfield House, Baker Street
Aston Tirrold, nr Didcot
OX11 9DD. 07962 055717
peterlancasterfineart.co.uk
OS | R | P

11 12 13 14 15 16 17 18 19

249 Victoria Zoe Goddard

OCG Jewellery



Unique silver jewellery with gems, including a new collection of an ancient Japanese inlay technique 'nunome zogan'.
11am-6pm
Springfield House, Baker Street
Aston Tirrold, nr Didcot
OX11 9DD. 07742 639269
victoriazoejewellery.co.uk
R | P

11 12 13 14 15 16 17 18 19

253 Sylva Foundation

Wood, Various



Showcasing the best in design and craft in wood: beautiful furniture, live demonstrations, courses, café and more.
10am-5pm
Sylva Wood Centre
Little Wittenham Road
Long Wittenham
OX14 4QT
01865 408018
www.sylva.org.uk

W | OS | D | R | P | T

11 12 13 14 15 16 17 18 19

254 Gillian Diggle

Jewellery



Handmade beautiful jewellery with colourful semi-precious stones in a lovely garden studio.
11am-6pm
Clumps Art Studio
The White Cottage
Little Wittenham. OX14 4RA
07962 014845
www.lwljewellery.co.uk
W | R | P

11 12 13 14 15 16 17 18 19

255 Jane Duff

Painting



Landscape paintings of Oxfordshire and seascapes of Cornwall and West Wales in a lively garden studio.
11am-6pm
Clumps Studio
The White Cottage
Little Wittenham
OX14 4RA
07974 018430
www.janeduff.co.uk

W | OS | D | R | P

11 12 13 14 15 16 17 18 19

250 Anna Dillon OAS

Painting



A welcoming village studio filled with vibrant landscape paintings that individually tell stories of the heritage of our countryside.
11am-6pm
Heathersage, Aston Street
Aston Tirrold
nr Didcot
OX11 9DJ
07786 876411
www.annadillon.com
R | P

11 12 13 14 15 16 17 18 19

251 North Moreton Artists

Various



An exhibition of finely crafted works including fine art, textile prints, wooden rocking horses and jewellery all in this lovely church.
11am-6pm (Sun 11-4pm)
All Saints Church
Wallingford Road
North Moreton OX11 9AT
charlotte.davies@talktalk.net
D | R | P

11 12 13 14 15 16 17 18 19

252 Clare Owen

Ceramics, Pottery



Eclectic mix of hand-built jars, lamps, plates and other vessels, often showing images from nature. Plus a few small thrown items.
11am-5pm (Tue-Fri 2-5pm)
42 Little Wittenham Road
Long Wittenham
OX14 4QS
01865 407654

OS | P

11 12 13 14 15 16 17 18 19

256 Sarah Marchant | Hester Robinson-Spoon

Ceramics, Jewellery



Hand-built original ceramics, beautiful silver bangles and spoons. Exhibiting with Jane Duff & Gillian Diggle. 11am-6pm
Clumps Studio, The White Cottage, Little Wittenham
OX14 4RA. 01865 407056
sarahmarchant01@gmail.com;
hesterrobinson@hotmail.com;
W | OS | R | P

11 12 13 14 15 16 17 18 19

257 Bruce Bignold

Painting

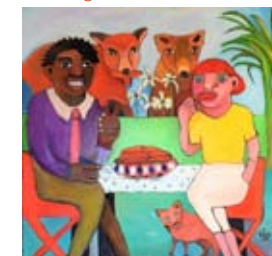


Various streets and sites lovingly lashed down in acrylics.
10am-5pm
Stewart Village Hall
Brightwell-cum-Sotwell
nr Wallingford
OX10 0RY
01865 326174
bruce.bignold@zen.co.uk
W | P

11 12 13 14 15 16 17 18 19

258 Valerie Dearlove

Painting



I am an outsider artist working in oil on canvas.
10am-5pm
Stewart Village Hall
Brightwell-cum-Sotwell
nr Wallingford
OX10 0RY
01235 530772
vadearlove@hotmail.co.uk

W | P

11 12 13 14 15 16 17 18 19

259 John Hailstone

Digital Art, Photography



John Hailstone's new work 'Spectra' explores the colours of light found in the natural and the synthetic.
10am-5pm
Stewart Village Hall
Brightwell-cum-Sotwell
nr Wallingford OX10 0RY
01491 200413
granizo.uk
W | P

11 12 13 14 15 16 17 18 19

262 Flick Whitehead

Printmaking



Original artwork, screenprints, linoprints and etchings. Open working studio converted from a 1950s outhouse.
11am-5pm (Fri 10-3pm)
34 Greenmere
Brightwell-cum-Sotwell
nr Wallingford OX10 0QQ
07894 225904.
littleouthouseprints.co.uk
OS | D

11 12 13 14 15 16 17 18 19

260 Judith Payne | Louise Shepherd | Anne Ware

Painting



Atmospheric landscapes in watercolour, Cornish landscapes, portraits and still life in oil & lively acrylic impressionist paintings.
10am-5pm
Stewart Village Hall
Brightwell-cum-Sotwell
nr Wallingford
OX10 0RY
07717 733736
lshepherd@gmail.com
W | P

11 12 13 14 15 16 17 18 19

263 Hayley Trezise

'Raggedy'
Textiles, Sculpture



Unique wearable art for the woman who likes individuality. Slow fashion that is timeless, ageless and ethical.
11am-6pm (Sun 11-4pm)
7 The Street, Ipsden
nr Wallingford OX10 6AG
07974 640268
www.raggedyrags.co.uk
OS | R | P

11 12 13 14 15 16 17 18 19

261 John Stephen OAS

Painting



Large stylized and abstracted oil paintings form life and landscape.
10am-5pm
Stewart Village Hall
Brightwell-cum-Sotwell
nr Wallingford
OX10 0RY
www.carabus.me
W | P

11 12 13 14 15 16 17 18 19

264 Debbie Page OCG

Ceramics

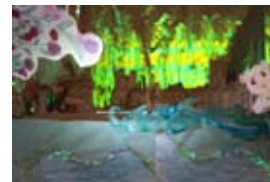


Inspired by Korean and Japanese pottery, Debbie uses simple, strong forms, lively glazes and smoke firing in her handbuilt ceramics.
11am-6pm (Fri 11am-8pm)
The Telephone Kiosk
Wood Lane, Kidmore End
nr Henley RG4 9BB
07802 347943
www.debbiepage.co.uk
D

11 12 13 14 15 16 17 18 19

265 River & Rowing Museum

Various



Palettes and Paddles: an exciting exhibition of paintings and artwork by young people attending the Museum's Artways Art Club.
11am-4pm
River & Rowing Museum
Mill Meadows
Henley-on-Thames
RG9 1BF
01491 415600
rrm.co.uk
W | P | NS

11 12 13 14 15 16 17 18 19

268 Harriet Coleridge OCG

Ceramics



Porcelain with carbon trap shino as well as new work fired in the wood kiln at Wytham. Exhibiting with four other artists.
11am-6pm
Ewelme Pottery, Parsons Lane
Ewelme, nr Wallingford
OX10 6HP. 01491 836032
www.harrietcoleridge.co.uk
OS | R | P

11 12 13 14 15 16 17 18 19

266 Camilla Shelley

Painting



Chiltern landscapes in oils. Exhibition runs 20 April to 2 June in Regency mansion by the Thames.
11am-4pm
Henley Business School
University of Reading
Greenlands, Hambleden
Henley-on-Thames
RG9 3AU
01491 571454
www.henley.ac.uk
P (runs 20 April to 2 June)

11 12 13 14 15 16 17 18 19

269 John Parrey

Sculpture, Wood



Carved wooden wall sculpture in local oak and boxwood with numbered silver tags.
11am-6pm
Ewelme Pottery
Parsons Lane, Ewelme
nr Wallingford OX10 6HP
01491 836032
www.johnparrey.co.uk
R | P

11 12 13 14 15 16 17 18 19

267 Julie Grose OCG

Sculpture



Sculptural blacksmith opens forge to public. Visit Julie to see her current project or to discuss commissioning one of your own.
10am-4pm (Tue-Fri 12-6pm)
Unit 2, Warrenhill Farm
Nuffield Lane
Wallingford
OX10 6QN
07960 192475
juliegrosmetaldesign.co.uk
W | OS | D | R | P | T

11 12 13 14 15 16 17 18 19

270 Geoffrey Harcourt

Painting



A mix of watercolour and oil paintings whose subjects derive from studio work and landscapes from home and abroad.
11am-6pm
The Old Vicarage, Church Road
Benson nr Wallingford
OX10 6SF. 01491 838688
geoffreyharcourt.com
W | OS

11 12 13 14 15 16 17 18 19

271 Satnam Bains*Various*

Unique handmade ceramic sculptures, experimental techniques and materials. Exhibiting in a beautiful tranquil location.

11am-6pm (Sun 12-3pm)
Babylon Plants, Chestnut Farm
Cuxham, Watlington
OX49 5ND. 07798 534522
babylonplants.co.uk
W | D | R | P

11 12 13 14 15 16 17 18 19

274 Sallie Sayers

| **Megan Sayers** *Drawing, Painting, Mixed Media,*



Beautifully detailed abstracts and portraiture in a variety of mediums and themes.

11am-6pm (Sat/Sun 11-5pm)
1 Old School Place, Gorwell
Watlington OX49 5QH
0771 4402287
www.salliesayers.com

W | OS | P

11 12 13 14 15 16 17 18 19

272 Stephen Pawlyn| **Jane Pawlyn***Painting, Wood*

Jane has been painting most of her adult life. Stephen joined her on retiring, painting in water colour and acrylics.

11am-6pm (Tue/Wed/Fri 3-6pm)
8 Cuxham Road, Watlington
OX49 5JW. 01491 612530
sandjapawlyn@gmail.com
OS | P

11 12 13 14 15 16 17 18 19

275 James Kelso*Painting*

Self-taught oil painter, works with acrylics, oils, watercolour & graphite on board & paper. Frequent Royal Academy exhibitor.

11am-6pm
The Royal Oak, 27 Gorwell
Watlington OX49 5QB
01491 613003
www.jameskelsoartist.com
OS

11 12 13 14 15 16 17 18 19

273 Fatmagul Aaltonen| **Rachel Gill***Glass, Painting*

Semi abstract landscape paintings: - the Chilterns and Cornwall - & decorative fused glass items inspired by the Chilterns & beyond.

11am-6pm (Sat/Sun 11-5pm)
1 Old School Place, Gorwell
Watlington OX49 5QH
07748 961761
[f /RachelGillArt](https://www.facebook.com/RachelGillArt)
www.sparkling-glass.com

W | P

11 12 13 14 15 16 17 18 19

276 Jennifer Skene*Drawing, Painting*

A year on paper, exploring the seasons, family, motherhood, simplicity, joy and vulnerability.

10am-6pm (Mon-Thu 10-2pm)
Watlington Library
35 High Street
Watlington OX49 5PZ
01491 612241
[@jens_sketchbook/](https://www.instagram.com/jens_sketchbook/)
W | D

11 12 13 14 15 16 17 18 19

277 Patricia Warrener*Painting, Sculpture*

Stunningly delicate and atmospheric nature themed works using pointillist techniques.

9am-4pm
TuTu Delicious Chocolates
30 High Street
Watlington OX49 5PY
01491 612462
www.tutudelicious.co.uk

11 12 13 14 15 16 17 18 19

280 Susie Bidgood*Pottery*

Unique pots of various sizes, created by using coils of clay which is then smoothed or textured. Some are suitable for the garden.

9.30am-5pm (Sun 10-4pm)
The Granary Delicatessen
16-18 High Street
Watlington
OX49 5PY
07771 926267
susiebidgood@mail.com

W | R

11 12 13 14 15 16 17 18 19

278 AlexHammersleyArt*Various*

Sourcing original, contemporary art for local, UK and international clients including private individuals, designers and developers.

11am-5pm
Georgian Room, Memorial Club
20 High Street
Watlington
OX49 5PY
07717 774294
www.alexh-art.com

W

11 12 13 14 15 16 17 18 19

281 Andrea Brewer*Ceramics, Sculpture*

Beautiful, original handbuilt ceramic homeware and sculpture. Artist present 11-13th & 17th-19th.

9am-5pm (Sun 10-4pm)
The Granary Delicatessen
16-18 High Street
Watlington OX49 5PY
01491 613585
www.abceramics.art
W | R

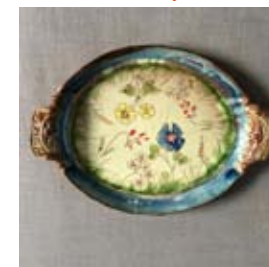
11 12 13 14 15 16 17 18 19

279 Dee Robinson| **Caroline Hyman***Photography*

Dogs and Other Animals: exploring the bond between owners and their pets.

9.30am-5pm (Sun 10-4pm)
The Granary Delicatessen
16-18 High Street, Watlington
OX49 5PY. 07703 310445
carolinehymanphotos.co.uk
deirdrerobinsonphotography.com
W | R

11 12 13 14 15 16 17 18 19

282 John Nuttgens*Ceramics, Pottery*

An exhibition of luscious slipware ceramics, much inspired by the colours and forms of the Chiltern Hills.

11am-5.30pm
K is for Kitchen
14 High Street
Watlington OX49 5PY
07903 1245631
www.johnnuttgens.co.uk
W | P

11 12 13 14 15 16 17 18 19

283 Harriet Riddell*Textiles*

A textile performance artist, with a sewing machine Harriet stitches portraits and landscapes from around the world.

10.30am-5.30pm
12 High Street
Watlington OX49 5PY
07511 510698
www.harrietriddell.com

W|D|R|P|T

11 12 13 14 15 16 17 18 19

284 Emma Benz*Painting*

Bright and vivid original watercolours, often hand-gilded in real gold leaf, prints and greetings cards.

11am-6pm
That Lovely Stuff
4 High Street
Watlington
OX49 5PS
01491 612194
www.emmabenz.co.uk

11 12 13 14 15 16 17 18 19

285 Jane Slemeck**| Elly Daniels***Various*

An eclectic mix of multimedia mosaics, and paintings in oils, watercolours and acrylics.

11am-6pm
4 High Street
Watlington
OX49 5PS
01491 613606
www.soul-pathways.co

11 12 13 14 15 16 17 18 19

289 Joanne Lillywhite*Mixed Media, Painting*

Vibrant paintings of local fields & woodlands displayed in Grade II listed chapel. See artist at work. Refreshments too.

11am-6pm (Sun 2-5pm)
Methodist Church
14 Shirburn Street, Watlington
OX49 5BT. 07880 330697
jolillywhiteart.co.uk
W|D|R

11 12 13 14 15 16 17 18 19

290 Laura Jane Wylder*Sculpture*

A collection of elegant contemporary bronze and stone figures, from small table-top to stunning monumental sculptures.

11am-6pm (Sun 2-5pm)
Methodist Church Garden
14 Shirburn Street
Watlington OX49 5BT
01491 614485
www.laurajanewylder.com
W|D|R|P

11 12 13 14 15 16 17 18 19

291 Chapel Arts*Various*

Seven Watlington artists show drawing, mixed media, painting, sculpture, wood & more in central Methodist Chapel.

11am-6pm (Sun 2-5pm)
14 Shirburn Street
Watlington
OX49 5BT

W|D|R|P

11 12 13 14 15 16 17 18 19

286 Valerie Powell*Painting*

Artist/designer Valerie (Green) Powell focuses on natural subjects in various mediums with a concentration on draughtsmanship and vitality.

11am-5pm
Bella Luce
2 High Street
Watlington
OX49 5PS
01491 598838
www.bella-luce.co.uk

11 12 13 14 15 16 17 18 19

287 Mark Draisey*Painting*

Professional portrait painter: traditional portraits of people for the modern era. Also dogs and horses.

10am-5pm
Robinson Sherston Estate
Agents, 1 High Street
Watlington OX49 5PH
01491 614493
www.markdraisey.com
OS

11 12 13 14 15 16 17 18 19

288 Howe Hill Collective*Various*

Five artists from Howe Hill show an exciting mix of painting, ceramics, drawing, paper craft & photography in beautiful Watlington Town Hall.

11am-6pm
Town Hall, High Street
Watlington OX49 5PY
07899 995438

R|P

11 12 13 14 15 16 17 18 19

292 Simon Barber*Painting*

Paintings inspired by the potency of historic Watlington and the surrounding area.

11am-6pm
The Fat Fox Inn
13 Shirburn Street
Watlington OX49 5BU
07803 938763
iamsimonbarber@gmail.com

W|R|P

11 12 13 14 15 16 17 18 19

293 Anne Arlidge OCG*Glass*

Form, colour, function. Glass: blown, cut, cast, hot worked and polished for house and garden.

11am-6pm
Cu Cucine
36 Couching Street
Watlington
OX49 5QQ
01491 599116
www.assendenglass.co.uk

11 12 13 14 15 16 17 18 19

294 Diana Stanton*Painting*

Oil paintings inspired by the sea and the sky.

11am-5pm (Sun 11-4pm)
Drapes Design Company
40 Couching Street
Watlington
OX49 5QQ
01491 612273
www.drapes.co.uk

11 12 13 14 15 16 17 18 19

295 Jaine McCormack
Mixed Media


Textile and embroidery pieces playing on memory and incorporating found items.
11am-5pm

The Springs
1 Ingham Lane
Watlington OX49 5EH
07776 136561
www.jainemccormack.co.uk

OS

11 12 13 14 15 16 17 18 19

298 Claire Florey-Hitchcox
Printmaking


Fine wood & lino block carvings, prints & wallpaper. Studio printing press demonstrations. Free tea & cakes in garden. 12pm-6pm
Chequers Cottage
Stadhampton/Newington
nr Chalgrove OX10 7AW
01865 890080

clairefloreyhitchcox.wix.com/print
W | OS | D | R | P

11 12 13 14 15 16 17 18 19

296 Angela Swan
Textiles


Open studio with working handloom showing weaving process from design to commercially-produced fabric.
11am-5pm

The Springs
1 Ingham Lane
Watlington
OX49 5EA
01491 612412
angelaswan-weaver.co.uk

OS

11 12 13 14 15 16 17 18 19

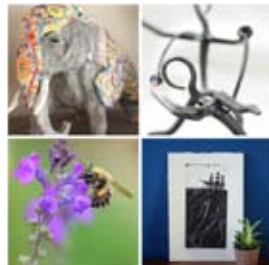
299 Fay Ford
Various


Riverbank stroll: paintings, prints and textiles displayed in garden studio with beautiful views and refreshments.
11am-6pm

2 Copse Cottages
Shillingford Road
Wallingford OX10 8LQ
07541 901131

fayford.com
OS | R | P

11 12 13 14 15 16 17 18 19

297 Art at Chalgrove Church
Various


Bigger than ever with many new artists: fabulous and unusual art and craftwork in a historic setting.
11am-6pm

St Mary's Church
Church Lane, Chalgrove
OX44 7SD. 07875 753709
gerrycoles@btinternet.com
W | R | P

11 12 13 14 15 16 17 18 19

300 Robin McClelland
Ceramics


Exciting handbuilt stoneware pottery, sculptural and unique.
1pm-5pm

Vintner's Lodge
Warborough Road
Shillingford
nr Wallingford
OX10 7SA
01865 858512
vintnerslodgeceramics.com

OS

11 12 13 14 15 16 17 18 19

301 Ann Batchelor | Gill Whitten
Textiles


Fantastic fabric creations, beautiful and practical to wear and use. Bags, bowls, pictures, quilts & throws.
12pm-5pm

17 Page Furlong
Dorchester-on-Thames
OX10 7PU
01865 341833
gill.whitten@gmail.com

D

11 12 13 14 15 16 17 18 19

304 Margie Wellesley | Maggie Wheeler
Ceramics, Jewellery


Pretty hand-thrown pottery, handbuilt porcelain jewellery, garden ornaments and pots.
11am-5pm (Wed-Fri 11-3.30pm)

The Old Forge
Nuneham Courtenay
OX44 9NX
01865 343951
maggie.wheeler@btinternet.com

OS | R | P

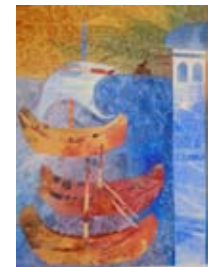
11 12 13 14 15 16 17 18 19

302 Sophia Stewart Liberty
Painting


Watercolour paintings, mainly landscape: focusing on those magical moments when the sun illuminates the landscape in unexpected ways.
12pm-5pm

66 High Street, Dorchester-on-Thames, nr Wallingford
OX10 7HN. 01865 341486
sophiastewartliberty.com
OS | D | P

11 12 13 14 15 16 17 18 19

305 Caddy Attewill
Painting


Mostly landscapes worked in watercolour but sometimes in oil. Also a few portraits.
11am-6pm (Thu 11-8pm)

19 The Green
Marsh Baldon
OX44 9LJ
01865 343336
caddy.attewill@googlemail.com
OS | T

11 12 13 14 15 16 17 18 19

303 Colin Grace
Furniture, Sculpture


Traditional blacksmith. Watch unique items being handmade and buy from the shop.
Commissions undertaken.

10am-3pm (Sat 10-1pm)
Turnpike Forge
Abingdon Road
Clifton Hampden OX14 3DE
01865 407981
www.turnpikeforge.com

W | D | P

11 12 13 14 15 16 17 18 19 (also open 6-10 20 22-24 May)

306 JB Lowe
Painting


Large abstract paintings displayed outside in a garden setting: open dry days only.
Tea and coffee available.

11am-6pm (Sat/Sun 11-7pm)
72 Wheatley Road
Garsington
nr Oxford OX44 9ER
01865 361836
www.jblowe.co.uk
R | P

11 12 13 14 15 16 17 18 19

307 Mavina Baker
Printmaking

Unique selection of artist's books, lino/woodcuts, prints and cards, exhibited in a working studio.

11am-6pm

The White Cottage

The Green, Denton

nr Oxford

OX44 9JE

07974 705072

teacuppress.blogspot.com

OS | P

11 12 13 14 15 16 17 18 19

310 Jackie Birchall of Purple Urchin *Glass*

Copper-foiled stained glass for garden and indoors, an eclectic mix of subjects with a touch of humour in cottage setting. 10am-5pm

Ambrose Cottage, Holton

nr Wheatley

OX33 1PS

07773 623973

purpleurchin.online

OS | D | P

11 12 13 14 15 16 17 18 19

308 Jeanne Jackson OCG
Ceramics

Functional and decorative handmade ceramics displayed in large workshop in pretty cottage garden. Teas. 11am-6pm (Thu 11-8pm)

Shepherds Cottage

2 Blenheim Road, Horspath

OX33 1RY

01865 876647

jeanne.jackson.co.uk

OS | D | R | P | T

11 12 13 14 15 16 17 18 19

311 Christine Erica Bainbridge
Painting

Landscapes, seascapes and abstract paintings. Visit the studio, have tea in the garden and try out art materials in the shed. 11am-6pm

3 Barns Close, Holton

nr Wheatley OX33 1QB

01865 872868

christineericabainbridge.co.uk

OS | D | R | P

11 12 13 14 15 16 17 18 19

309 Patrick Jeffs
Painting

Abstract paintings which have a prevailing sense of landscape and the natural environment.

11am-6pm

64 Crown Road

Wheatley

OX33 1UL

01865 873446

ppandpjeffs@btinternet.com

OS | P

11 12 13 14 15 16 17 18 19

312 Maeve Bayton OAS
Various

Inspired by nature: 2D artwork in a wide range of media: paintings, collage, lino and screen prints, cards etc. 8am-5pm (Sat 8-2pm, Sun 9-11am)

Stanton St John Village Shop

13 Middle Road

Stanton St John

nr Oxford OX33 1HD

01865 351532

maevebaytonart.carbonmade.com

R | P (also open 4-5 7-10 & 20th May)

11 12 13 14 15 16 17 18 19

313 Jane Hanson OCG
Ceramics

Ceramic studio in wild garden showing high fired colourfully painted pots.

12pm-6pm (Thu 12-8pm)

Church Farmyard

Waterstock

OX33 1JR

07725 059511

janepots@gmail.com

W | OS | R | P

11 12 13 14 15 16 17 18 19

316 Barbara Shaw OCG
Textiles

Unique interpretations in textiles of life in this pretty town and beautiful surrounding area. Regular demos, parking nearby. 10.30am-4.30pm (Sat 10-12.30pm)

Fisher German

17 High Street

Thame

OX9 2BZ

07535 509188

www.artintextiles.co.uk

D

11 12 13 14 15 16 17 18 19

314 Helen MacRitchie OCG
Textiles

Contemporary felting and embroidered textiles: unique handbags, wearables and accessories.

11am-6pm (Thu 11-8pm)

Meadow House

Park Farm, Waterstock

OX33 1JT. 01865 655861

helenmacritchie designs.com

OS | P

11 12 13 14 15 16 17 18 19

317 Sparksartists
Various

Eight artists introduce individual works: printmaking, painting, artists books, textiles & mixed media. Come and take part in activities throughout the week.

10am-5pm

Bell Kitchen Design Studio

94 High Street

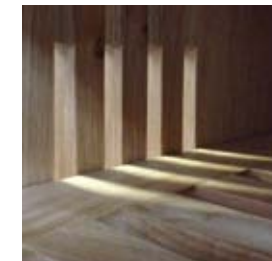
Thame OX9 3EH

01844 214041

heather@hunterbooks.co.uk

W | D | P

11 12 13 14 15 16 17 18 19

315 Bates and Lambourne
Furniture

Celebrating forty years of turning wonderful trees into equally wonderful furniture and it's still fun!

11am-6pm (Sat/Sun 11-4pm)

The Camp Industrial Estate

Rycote Lane

Milton Common OX9 2NP

01844 278978

batesandlambourne.co.uk

W | OS | P

11 12 13 14 15 16 17 18 19

318 Stuart Feurtado
Photography

Vivid colour and moody monochrome images inspired by natural and man-made forms.

10am-5pm (Sat 10-4pm)

Stoneworld Kitchens

43A Upper High Street

Thame

OX9 2DW

01844 261768

stuart-feurtado-photography.co.uk

OS

11 12 13 14 15 16 17 18 19

319 Patricia Lenko OAS**| Diana Noel***Various*

Unconventional and diverse use of various media influenced by mood, surroundings and life.
10am-5pm (Sat 10-4pm)

Stoneworld
43A Upper High Street
Thame OX9 2DW
01844 261768

patricialenko@gmail.com

11 12 13 14 15 16 17 18 19

322 Graham Lester OCG*Paper, Sculpture*

A collection of original paper sculptures and turned art made from reclaimed materials.

10.30am-5.30pm

fitch & fellows
18 Buttermarket
Thame
OX9 3EP
07967 229118

www.grahamlester.co.uk

11 12 13 14 15 16 17 18 19

320 fitch & fellows*Various*

Celebrating the unusual in creative craftsmanship. Sculpture, ceramics, jewellery, glass, paintings, textiles, metalwork & more.

10.30am-5.30pm

18 Buttermarket

Thame

OX9 3EP

www.fitchandfellows.com

11 12 13 14 15 16 17 18 19

323 Kate Wilkinson OCG*Jewellery*

Contemporary jewellery in textured silver and some unusual contrasting materials. Focusing on necklaces and earrings.

10.30am-5.30pm

fitch & fellows

18 Buttermarket

Thame OX9 3EP

07720 291521

katewilkinsonjewellery.com

11 12 13 14 15 16 17 18 19

321 Brenda Hurley*Painting*

My work is inspired by marks and patterns left on the landscape by forgotten footsteps.

10-30am-5-30pm

fitch & fellows

18 Buttermarket

Thame OX9 3EP

01844 215099

www.fitchandfellows.com

11 12 13 14 15 16 17 18 19

324 Janine Philips*Painting*

Oil paintings on canvas inspired by coasts & local landscapes exploring colour, texture & light from the representational to abstraction.

12-6pm (Mon/Thu/Fri 12-4pm) or by appt.

24 Queens Road Thame

OX9 3NQ. 01844 214897

www.janinephilips.co.uk

OS

11 12 13 14 15 16 17 18 19



Providing help in the heart of the home

Do you or does a loved one need support twenty four hours a day perfectly tailored to your particular needs on either a temporary or long-term basis so that you can live as you choose in the comfort of your own home?

We can help you enjoy independence and well-being, with appropriate assistance always on hand.

To hear more, or for a free-of-charge appointment, contact Rebecca on **01865 715780** or email liveincare@danacare.co.uk



Day and Nightcare **Live-In** www.danacare.co.uk



Bloxham School

Co-educational Boarding and Day School for ages 11-18



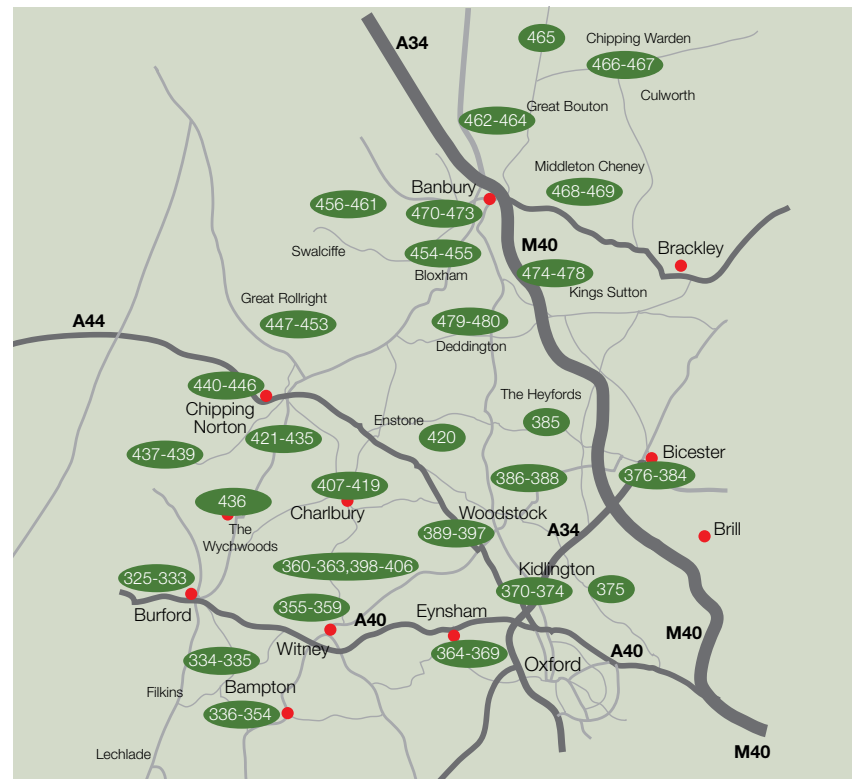
Delighted to be supporting Oxfordshire Artweeks
Art Scholarships available for those with exceptional talent

Please contact admissions@bloxhamschool.com to find out more

CUCKOO LANE ARTISANS

SEVEN ARTISTS IN ONE BEAUTIFUL LOCATION

WWW.FACEBOOK.COM/CUCKOOLANEARTISANS



NORTH OXFORDSHIRE 18-27 May 2019

North Oxfordshire Map

This map is to provide approximate guidance only. Please use the venue addresses provided with a road map or SatNav to locate specific exhibitions.

Additional Information

Visit the Artweeks website to see, for many exhibitors, further details, artist biographies, additional pictures of artists' work and to check for any changes and updates.

Local Area Trails

Some groups of artists, coordinated by local volunteer organisers, have put together more detailed trail maps to help you navigate from venue to venue. Many of these can be downloaded at www.artweeks.org

325 Sally Wyatt

Painting, Printmaking



Demos. Studio sales. Painting workshop on Wed 22nd, phone to book. Solo show 'Palimpsest' at Warwick Hall (venue 330). 11am-6pm
Star Cottage B&B
Meadow Lane, Fulbrook
Burford OX18 4BW
www.sallywyatt.com
OS|D|R|P|T

18 19 20 21 22 23 24 25 26 27

326 Martin Cash OAS OCG

Sculpture



Sculpture exhibition with Fulbrook & Burford Artists & Sally Wyatt. Unique sculptures in British stone for in/outdoors. Daily demos. 11am-6pm
Fulbrook Church & Star Cottage by War Memorial, Fulbrook
OX18 4BA. 07531 269209
martincashsculpture.com
W|OS|D|R|P

18 19 20 21 22 23 24 25 26 27

327 Fulbrook and Burford Artists

Various



Local art group exhibiting work in various materials, some artists demonstrating daily. 11am-6pm
Fulbrook Church
Church Lane, Fulbrook
nr Burford OX18 4BA
07941 267955
lynbibbings@icloud.com
W|D|R|P|NS

18 19 20 21 22 23 24 25 26 27

331 Laura Sednaoui

Painting



Powerful and expressive paintings recreating time, place and emotional engagement. Main influences American and Cornish abstract painters. 11am-5.30pm
Asthall Manor
Asthall nr Burford
OX18 4HW
www.laurasednaoui.com

W|R|P

18 19 20 21 22 23 24 25 26 27

332 Christopher Townsend

Sculpture



A collection of new metal sculpture set in a rustic courtyard setting just off A40 nr Burford & the Windmill restaurant. 11am-5pm
The Old Forge, Asthall Barrow Farm, Asthall nr Burford
OX18 4HJ. 07914 503519
christophertownsend.co.uk
W|OS|P

18 19 20 21 22 23 24 25 26 27

333 Guen Palmer

Jewellery



Contemporary jewellery designed and handmade using precious materials with unusual gemstones and pearls. 11am-5pm
The Old Forge
Asthall Barrow Farm
Asthall nr Burford
OX18 4HJ
07899 961655
www.guenpalmer.com
OS|R|P

18 19 20 21 22 23 24 25 26 27

328 Cecily's Fund

Painting



Showing art by internationally-renowned award-winning painter Raymond Martinez. 10am-6pm
The Old Hall
Warwick Hall, Church Green
Burford OX18 4RY
01993 358089
www.cecilysfund.org

W|R|P

18 19 20 21 22 23 24 25 26 27

329 North Cotswold Arts Association

Various



North Cotswold Arts Association was founded in 1968 and is a lively and friendly group of amateur and professional artists showing in many media. 10am-5pm
Warwick Hall, Church Green
Burford
OX18 4RY
01451 822550
northcotswoldart.co.uk

W|D|R|P

18 19 20 21 22 23 24 25 26 27

330 Sally Wyatt

Painting



This exhibition focuses on multiple levels of meaning as new painting has been superimposed on effaced earlier works. 9.30am-5pm (Sun 1.30-5pm)
The Gauntlett Room & Café Atrium
Warwick Hall
Burford
OX18 4RY
01993 822032
www.sallywyatt.com

W|R|P

18 19 20 21 22 23 24 25 26 27

334 Callum Harvey | Ren Condry

Painting, Printmaking



A collection of recent works by two artists working in oil paint and print. 11am-6pm (Fri 2-8pm)
2 Hazells Lane
Filkins nr Burford
GL7 3HX. 07740 266097
callumharvey3.wixsite.com/mysite

R

18 19 20 21 22 23 24 25 26 27

335 Art in the Library

Photography, Textiles



Art by local photography group, Lights Up, Cotswold Flower Club and Carterton Knit & Natters. 10am-5pm (Tue/Fri 10-7pm, Sat 9.30-1pm)
Carterton Library, 6 Alvescot Road, Carterton
OX18 3JH. 01993 841492
oxfordshire.gov.uk/residents/leisure-and-culture/libraries
W|OS|R|P|NS

18 19 20 21 22 23 24 25 26 27

336 Michele Wallington WOA

Painting

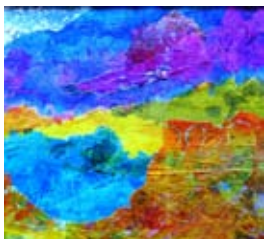


Contemporary & imaginative landscapes, flowers and seed heads. Paintings, affordable prints, bags and cards. Lovely café next door. 10.30am-5pm (Thu 2-5pm)
Barn Cottage, Main Street
Clanfield nr Bampton
OX18 2SH
07917 361296
michelewallington.co.uk

OS|R|P|T

18 19 20 21 22 23 24 25 26 27

337 Lesley Williams WOA | Frances Williams WOA | Anna Lever OAS WOA Various



Professional artists: ceramic sculpture, pottery (domestic ware, lamps, garden pots), framed works in mixed media. Garden setting. 11am-5pm
Stenton Cottage, 3 Bridge Street
Bampton
OX18 2HA. 01993 851963
lesley.williams1@hotmail.co.uk
W | O | S | D | R | P

18 19 20 21 22 23 24 25 26 27

340 Janine Kilroe Photography



Black & white fine art photography printed onto watercolour paper with colour selectively reintroduced back into the image by hand painting. 11am-6pm
West Ox Arts Gallery, Market Square, Bampton
OX18 2JH. 07882 033919
janinekilroe.com
D | P (also 11.30-4.40pm 11-17 May & 28-8 Jun; shut Mons)

18 19 20 21 22 23 24 25 26 27

338 Tuala Nicholson Various



Stylish hand-made wood, slate & stone sculptures including unique home and gardenware in gallery style setting. 12-5pm
Wisteria, Church View
Bampton
OX18 2NE
01993 852666
stikdesigns@sky.com

W

18 19 20 21 22 23 24 25 26 27

341 Faye Knight WOA Painting



Acrylic paintings using palette knives to create a contemporary style. 11am-6pm
West Ox Arts Gallery
Market Square
Bampton OX18 2JH
01993 850137
www.westoxarts.com

D | P (also 11.30-4.40pm 11-17 May & 28-8 Jun; shut Mons)

18 19 20 21 22 23 24 25 26 27

339 Natalie Day WOA Painting



Abstract and semi-abstract mixed-media paintings capturing my emotional response to landscapes and life experiences. 11am-6pm
West Ox Arts Gallery
Market Square
Bampton OX18 2JH
www.nataliedayartist.com

D | P (also 11.30-4.40pm 11-17 May & 28-8 Jun; shut Mons)

18 19 20 21 22 23 24 25 26 27

342 Christine O'Sullivan Painting



Contemporary abstract paintings. 11am-6pm
West Ox Arts Gallery
Market Square
Bampton
OX18 2JH
0781 2173130
christineosullivan.com

D | P (also 11.30-4.40pm 11-17 May & 28-8 Jun; shut Mons)

18 19 20 21 22 23 24 25 26 27

343 Melissa Orrom Swan WOA Mixed Media, Sculpture

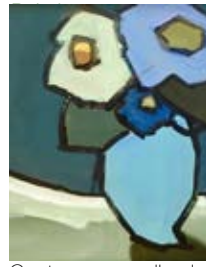


Wonderful sculpted creatures, wire & cement fondu, for indoors & outdoors. Also prints and mixed media in large group exhibition. 11am-6pm
West Ox Arts Gallery
Market Square
Bampton OX18 2JH
www.melissaorromswan.co.uk

D | P (also 11.30-4.40pm 11-17 May & 28-8 Jun; shut Mons)

18 19 20 21 22 23 24 25 26 27

346 Silvi Schaumloeffel WOA



Contemporary oil painting, focusing on expressive mark making and colour relationships. 11am-6pm
West Ox Arts Gallery
Market Square
Bampton OX18 2JH
07816 890207
www.artbysilvi.com

D | P (also 11.30-4.40pm 11-17 May & 28-8 Jun; shut Mons)

18 19 20 21 22 23 24 25 26 27

344 Debbie Page OCG Ceramics



Inspired by Korean and Japanese pottery, Debbie uses simple, strong forms, lively glazes and smoke firing in her handbuilt ceramics. 11am-6pm
West Ox Arts Gallery
Market Square
Bampton OX18 2JH
07802 347943
www.debbiepage.co.uk

D | P (also 11.30-4.40pm 11-17 May & 28-8 Jun; shut Mons)

18 19 20 21 22 23 24 25 26 27

347 Angela Radcliffe WOA Painting



Still life studies, plus landscapes and seascapes, using oil paint or acrylics. 11am-6pm
West Ox Arts Gallery
Market Square
Bampton OX18 2JH
01993 850137
www.westoxarts.com

D | P (also 11.30-4.40pm 11-17 May & 28-8 Jun; shut Mons)

18 19 20 21 22 23 24 25 26 27

345 Sharon Rich Sculpture



Unique, hand-carved stone sculpture: animals, nature & a pinch of myth and magic. Meet the artist at venue 192. 11am-6pm
West Ox Arts Gallery
Market Square
Bampton OX18 2JH
01793 782382
sharonrichsculpture.co.uk

D | P (also 11.30-4.40pm 11-17 May & 28-8 Jun; shut Mons)

18 19 20 21 22 23 24 25 26 27

348 Heather Rozario WOA Painting



Ethereal land-, sea- and sky-scapes of Oxfordshire and Devon: bold oils, delicate watercolours & rich pastels. 11am-6pm
West Ox Arts Gallery
Market Square, Bampton
OX18 2JH. 01993 850137
heatherrozariostudio.org

D | P (also 11.30-4.40pm 11-17 May & 28-8 Jun; shut Mons)

18 19 20 21 22 23 24 25 26 27

349 Nadia Ryzhakova WOA*Painting*

'I paint how I feel about reality rather than how I see it.'

11am-6pm
West Ox Arts Gallery
Market Square
Bampton OX18 2JH
07803 521574

www.ipainting.pro

D | P (also 11.30-4.40pm 11-17 May & 28-8 Jun; shut Mons)

18 19 20 21 22 23 24 25 26 27

352 Susie Helm WOA | David Williams WOA*Painting, Sculpture***Below The Surface**

Below the Surface: sculptures, paintings and prints exploring life, light and colour within the water.

11am-6pm
Lime Tree House, High Street
Bampton OX18 2JN
07774 205972

susiehelm.co.uk
OS

18 19 20 21 22 23 24 25 26 27

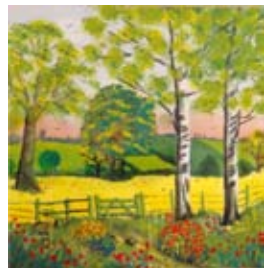
350 TinkerMade*Mixed Media*

Botanical impressions that capture the texture and delicacy of plants in intricate and exquisite detail.

11am-6pm
West Ox Arts Gallery
Market Square
Bampton OX18 2JH
01993 850137
www.tinkermade.co.uk

D | P (also 11.30-4.40pm 11-17 May & 28-8 Jun; shut Mons)

18 19 20 21 22 23 24 25 26 27

353 Antony Belcher WOA*Drawing, Painting*

An artist using all drawing and painting media: mixed media, oils, watercolour, acrylic pen & ink, and pencil.

10am-4pm
13 Cote Road
Aston nr Bampton
OX18 2DU
01993 358483
arb.54g@gmail.com

OS | P (runs from 4th May)

18 19 20 21 22 23 24 25 26 27

351 Mark Fitzgerald*Pottery*

Open studio with a small gallery space. Functional rustic slipware and tin glazed earthenware.

11am-6pm
Sun Pottery
2 Bushey Row
Bampton OX18 2JU
07910 329426

www.sunpottery.co.uk
OS

18 19 20 21 22 23 24 25 26 27

354 Neville Crowson WOA*Painting*

Plein-air landscapes, seascapes and church interiors, garden scenes and still life on view in my house and garden.

11am-6pm
Blomfield House
Cote nr Bampton
OX18 2EG
01993 850139

OS

18 19 20 21 22 23 24 25 26 27

355 Jessica Parker*Jenny Smith | Mixed Media*

Paintings that are an exploration using bold colours and interesting textures often layering using collage, acrylic paint and ink. 10am-5pm
Kingfisher Studios Unit 30
Crawley Mill Industrial Estate
Crawley nr Witney OX29 9TJ
01993 899009

www.kingfisherstudios.biz
W | OS | R | P | T

18 19 20 21 22 23 24 25 26 27

358 Art in the Library*Various*

Witney Library is hosting an exhibit of art specially created by students from Abingdon and Witney College.

9am-7pm
Witney Library
Welch Way
Witney OX28 6JH
01993 703659

www.oxfordshire.gov.uk/residents/leisure-and-culture/libraries

W | R | P | NS

18 19 20 21 22 23 24 25 26 27

356 Rene Bradshaw WOA | Janet Penn | Roger Taplin*Drawing, Painting*

Life drawings, still life and landscapes in watercolour, pastels, mixed media etc. Teas in garden.

11am-6pm
9 Leys Villas, Witney
OX28 4DH. 01993 775024
mail@renebradshaw.plus.com

R | P

18 19 20 21 22 23 24 25 26 27

357 Susy Fuentes*Painting*

Pet portrait artist. Vibrant and full of life, her modern realistic animal portraiture is not to be missed. 9.30am-4pm

The Coffee Shed
The Leys Recreation Ground
The Leys/Station Lane
Witney OX28 4AR
07732 078993

www.susyfuentes.com
R | P

18 19 20 21 22 23 24 25 26 27

360 Emily Farmor | Rose Marie Caldecott*Jewellery, Painting*

Fine art and jewellery displayed in working studio in pretty rural setting.

11am-4pm
Cuckoo Lane Studios
Eynsham Park Estate
Cuckoo Lane, North Leigh
nr Witney OX29 6PW

www.jewelsfromem.co.uk
W | OS | R | P

18 19 20 21 22 23 24 25 26 27

361 Graham Rice | Sheila Raven

Jewellery, Painting



Beautifully-crafted silver jewellery and evocative artwork inspired by nature.

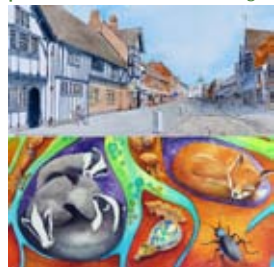
11am-6pm

The Cuckoo's Nest, Eynsham Park Estate, Cuckoo Lane, North Leigh, nr Witney OX29 6PW. 01993 880024

[f/CuckooLaneArtisans](#)
OS | R | P

18 19 20 21 22 23 24 25 26 27

364 Jane Tomlinson | Paul Tomlinson Painting



You'll love Jane's vibrant paintings of nature, trees, birds & quirky maps & her brother Paul's exquisite drawings of the built environment.

12pm-5.30pm

Spindlewood, New Road Sutton nr Witney, OX29 5RT 01865 881709

[janetomlinson.com](#)
R | P

18 19 20 21 22 23 24 25 26 27

362 Carrie Stanley Drawing, Painting



Exciting and experimental drawing and painting from amazing new studio at Cuckoo Lane.

11am-6pm

Old Stores Workshop, Cuckoo Lane, Eynsham Sawmill North Leigh, nr Witney OX29 6PS

[carrie_stanley@hotmail.co.uk](#)
OS | R | P | T

18 19 20 21 22 23 24 25 26 27

365 Suzy Wright Textiles, Various



Vibrant & unique stitched embroidery including botanical studies, flowers, fruit and birds.

11am-5pm

5 High Street Eynsham OX29 4HA 07938 809175

[www.orangethread.co.uk](#)
W | OS

18 19 20 21 22 23 24 25 26 27

363 Nic Vickery Painting



Quirky artwork at home in a quirky vintage caravan studio. Pastel artwork, but maybe not how you would expect it!

11am-6pm

The Cuckoo's Nest, Eynsham Park Estate, Cuckoo Lane, North Leigh, nr Witney OX29 6PW. 07870 140659

[nicvickeryanimalartist.com](#)
OS | D | P

18 19 20 21 22 23 24 25 26 27

366 Rosalind Duffy WOA Glass



A small working stained and fused glass studio.

11am-6pm (Thu 11-8pm, Sun 10-4pm)

6 Swan Street Eynsham OX29 4HU

07762 350085
[artofglassstudio.co.uk](#)

W | D | T

18 19 20 21 22 23 24 25 26 27

367 Eric White Mixed Media



Atmospheric landscapes of Oxford, the Cotswolds and beyond in sumptuous pastels and mixed media. A veritable feast of visual delights!

11am-6pm (Sun 12-6pm)

28 Mill Street

Eynsham

OX29 4JS

07806 801623

[www.ericjohnwhite-art.com](#)

OS | R | P

18 19 20 21 22 23 24 25 26 27

370 David Brown | Amanda Bonfiglioli Ceramics, Pottery



Hobby potter and artist/sculptor collaborate in making functional and decorative pots for home and garden.

11am-5pm

Glenwood, Little Blenheim Yarnton OX5 1LX 07724 581950

[davidbrownoxford@hotmail.co.uk](#)
OS

18 19 20 21 22 23 24 25 26 27

368 Peter Shrimpton Sculpture



Set in the garden of the Queen's Head, a range of contemporary sculptures and images reflecting the diverse and eclectic imagination.

12pm-11.30pm (Mon-Thu 12-3 & 5.30-11.30)

The Queens Head

17 Queen Street

Eynsham

OX29 4HH

01865 881229

[www.isandd.co.uk](#)

W | OS | R

18 19 20 21 22 23 24 25 26 27

371 Andrew Hazelden OCG WOA Ceramics, Pottery



Hand-thrown and brush-painted functional pottery, tin-glazed and reduction fired lustre-ware.

11am-6pm

156 Cassington Road Yarnton OX5 1QB 01865 371376

[www.yarntonpottery.net](#)
W | OS | D | P

18 19 20 21 22 23 24 25 26 27

369 Alice Walker Painting, Printmaking



Paintings of flight, forests and dance in a range of media and technique. Prints & cards, activities for all ages in a lovely setting.

10am-5pm

The Music Room

Queen Street (opp. no 43)

Eynsham OX29 4LA

[alicewalkerart.co.uk](#)

W | D | R | P | T (also open 11 & 12th)

18 19 20 21 22 23 24 25 26 27

372 Artists at St Mary's Various



Twenty-four artists showing work in various styles and media in this ancient and beautiful church.

12pm-5pm

St Mary's Church

Church Street

Kidlington OX5 2AZ

07906 595731

[parishofkidlington.org.uk](#)
W | R | P

18 19 20 21 22 23 24 25 26 27

373 John Somerscales OAS*Painting*

Atmospheric and evocative oil and watercolour paintings.

11am-6pm
3 Fernhill Close
Kidlington
OX5 1BB

www.jdsomerscales.co.uk

D | P

18 19 20 21 22 23 24 25 26 27

376 Sarah Moncrieff*Painting*

Sarah's oil paintings of HMP Bullingdon together with the 'Inside spaces' group exhibition.

11am-4pm
HMP Bullingdon
Patrick Haugh Road
Bicester OX25 1PZ
07855 522192

sarahmoncrieffpaintings.co.uk

W | R | P

18 19 20 21 22 23 24 25 26 27

374 Pamela Fyvie OCG*Glass*

Interesting, varied exuberant glassmaking for home & garden. Visit a working glass studio.

11am-6pm
95 Waverley Avenue
Kidlington
OX5 2ND
07813 992610
pamelafyvieglass.co.uk

W | OS | D | P | T

18 19 20 21 22 23 24 25 26 27

377 HMP Bullingdon*Various*

Inside Spaces: exhibition of work by prisoners at HMP Bullingdon and paintings by Sarah Moncrieff.

11am-4pm
HMP Bullingdon
Patrick Haugh Road
Bicester
OX25 1PZ
07855 522192

W | R | P | NS

18 19 20 21 22 23 24 25 26 27

375 William North*Painting*

Atmospheric watercolours of Otnoor and Oxfordshire plus views of Poland. A large garden with ponds and lakes to explore.

10am-5pm
Oddington Crossing
Charlton-on-Otnoor
Kidlington
OX5 2UN
01865 331535
www.williamnorth.co.uk

W | P

18 19 20 21 22 23 24 25 26 27

378 Bicester Art Network*Various*

A talented group of emerging local artists showcasing an eclectic mix of artistic styles and media, some for the first time.

11am-5pm
OYAP Trust
The Old St Edburg's School
Cemetery Road
Bicester OX26 6BB

W | D | R | NS

18 19 20 21 22 23 24 25 26 27

379 Bicester Sculpture Group*Sculpture*

An exciting exhibition of sculpture in all its forms using a wide range of materials including stone, clay, metal & wood.

11am-5pm
The Old St Edburg's School
Cemetery Road
Bicester
OX26 6BB
01296 714601
sculptureatbicester.org.uk

W | P

(runs from 4th May)

18 19 20 21 22 23 24 25 26 27

382 Valerie Norris*Textiles*

Embroidered textiles in mixed media: mirrors, boxes, book covers.

11am-4pm
11 Longfields
Bicester
OX26 6QN
01869 241924
craftylady14@sky.com

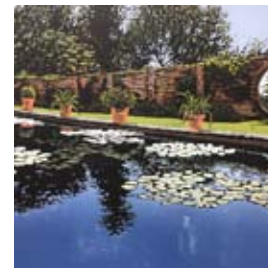
W | OS

18 19 20 21 22 23 24 25 26 27

380 Karen Joy**| Casimira Mostyn** *Painting*

Karen's expressionistic acrylic & mixed media landscapes & Casimira's quirky, naive watercolours and mixed media artwork. 11am-5pm
OYAP Trust
The Old St Edburg's School
Cemetery Road, Bicester
OX26 6BB. 07808 137322
dandkjoy@live.co.uk
W | D | R | P

18 19 20 21 22 23 24 25 26 27

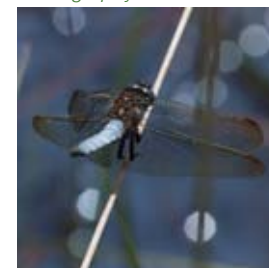
383 Alexandra Buckle*Printmaking*

A home studio featuring a large selection of colourful linocuts inspired by countryside scenery.

11am-6pm
71 Bucknell Road
Bicester OX26 2DF
07734 859572
www.alexandrabuckle.co.uk

OS | D | P | T

18 19 20 21 22 23 24 25 26 27

381 Graham Perryman**GCF (APF)***Photography*

Delighted to be presenting a series of UK wildlife and nature photography.

11am-5pm
The Old St Edburg's School
Cemetery Road
Bicester OX26 6BB
07889 971629
dragonflyframing.co.uk
W | R

18 19 20 21 22 23 24 25 26 27

384 Yvonne Mabs Francis**| Philip Jones***Various*

Two artists showing paintings, drawings and prints in their shared studio in a beautiful setting. 11am-6pm
Bignell Cottage, Chesterton
Bicester OX26 1UE
01869 249006

[f /Yvonne-Mabs-Francis-758509344246767](https://www.facebook.com/Yvonne-Mabs-Francis-758509344246767)
OS | P

18 19 20 21 22 23 24 25 26 27

385 Art More Lovely*Various*

Enjoy a range of artists exhibiting in a Victorian house and garden, with light lunches, tea & cake on offer, whatever the weather.

12pm-6pm

Heyford House

13 Church Lane

Lower Heyford nr Bicester

OX25 5NZ

www.artmorelovely.co.uk

R

18 19 20 21 22 23 24 25 26 27

388 Art at Holy Cross*Various*

This beautiful canal-side church provides a perfect setting: ceramics, jewellery, mosaics, painting, photography, pottery & more.

11am-4pm (Sat/Sun/B hol Mon 10-4pm)

Holy Cross Church, Canalside Shipton-on-Cherwell

nr Kidlington OX5 1JL

01865 806091

dougmacdon@aol.com

W | D | R | P

18 19 20 21 22 23 24 25 26 27

386 Dylan Bowen*Ceramics*

Sculptural and functional slip-decorated earthenware. New work and sale of seconds.

11am-5pm

The Old Smithy

12 The Green

Tackley

OX5 3AF

07584 300302

www.dylanbowen.co.uk

W | O | S | P

18 19 20 21 22 23 24 25 26 27

389 The Oxfordshire Museum*Painting*

Matisse: Drawing with scissors. Late works 1950-1954.

10am-5pm (Sun 2-5pm, B hol Mon 12-5pm)

The Oxfordshire Museum

Park Street

Woodstock OX20 1SN

01993 814106

oxfordshire.gov.uk/residents/leisure-and-culture/museums

W | R | P | NS (runs from 4th May)

18 19 20 21 22 23 24 25 26 27

387 Benedict Ramos*Photography*

Fine art photography with an emphasis on still life.

12pm-6pm

44 Medcroft Road

Tackley

OX5 3AH

01869 331704

benedict-ramos.format.com

W | O | S

18 19 20 21 22 23 24 25 26 27

390 Julie Wigg*Painting*

New collection of paintings and drawings, lying towards abstraction based on landscape and coastal scenes.

10am-5pm (Thu 10-8pm, Sun/B hol Monday 11-4pm)

Dali and The Bear

43 Oxford Street, Woodstock

OX20 1TJ

01993 357320

juliewiggartist.co.uk

W | R

18 19 20 21 22 23 24 25 26 27

391 Suzanne O'Driscoll*Painting, Sculpture*

Designs from her latest public art sculpture projects. Paintings, drawings, city landscapes and architectural details. First floor studio.

11am-6pm

Quarry Place, Grove Road

Bladon nr Woodstock

OX20 1RD. 01993 813268

www.suzanneodriscoll.com

O | S | P

18 19 20 21 22 23 24 25 26 27

394 Claire Fyfe-Jackson*Jewellery*

Designer silver and gold jewellery with semi-precious stones. Also handmade recycled metal flowers.

11am-6pm (Thu 4-6pm)

Sarts Cottage

The Ridings, Stonesfield

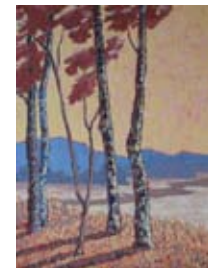
nr Witney OX29 8EA

01993 898327

clairepote16@hotmail.com

W

18 19 20 21 22 23 24 25 26 27

392 Dirk Pretorius OAS*Painting*

Atmospheric landscapes in oils, by a C21 Art Group member, a regular Artweeks exhibitor.

11am-6pm

The White House Bar & Kitchen

1 Grove Road

Bladon nr Woodstock OX20 1RQ

07712 173575

dirk.pret123@gmail.com

W | R | P

18 19 20 21 22 23 24 25 26 27

395 Hannelore Meinhold-Morgan OCG*Ceramics*

One-off sculptural, handbuilt and wheel-thrown ceramic pieces.

1pm-6pm

Boot Barn Pottery

Boot Street

Stonesfield

nr Witney OX29 8PX

01993 891389

18 19 20 21 22 23 24 25 26 27

393 Maureen Gillespie*Painting, Sculpture*

Painting and sculpture, a perfect marriage of art forms.

12pm-5pm (Sat/Sun 11-6pm)

174 Main Road

Long Hanborough

nr Witney

OX29 8JZ

07886 840574

www.thecotswoldstudio.co.uk

W | O | S | P

18 19 20 21 22 23 24 25 26 27

396 Grey Cat Studio*Various*

Art in many media by Rachael Sherlaw-Johnson, Rebecca Sherlaw-Johnson, Jenny Lines, Griselda Sherlaw-Johnson & Kerry Burniston.

11am-5pm

Grey Cat Studio,

Woodlands Rise

Stonesfield OX29 8PL

01993 891318

rebeccasj@btinternet.com

O | S | P

18 19 20 21 22 23 24 25 26 27

397 Chris Davies*Painting*

After a whirlwind 2018, BBC Big Painting Challenge finalist Chris Davies invites all to come drink coffee, eat cake and look at his paintings. 11am-6pm (Fri 4-8pm) Stonesfield Village Hall Field Close, Stonesfield OX29 8HA
www.chrisdaviesart.co.uk
 W | R | P

18 19 20 21 22 23 24 25 26 27

400 Richard Fox OAS*Sculpture*

Sculpture using marble, bronze and wood. Paintings using earth pigments and oil paintings. 11am-6pm (Thu 11-8pm) Wilcote Art Studios 4 Hunts Copse, Wilcote Riding Wilcote nr Finstock OX7 3DX. 07800 515952
richardfox-sculpture.com
 W | OS | D | R | P | T

18 19 20 21 22 23 24 25 26 27

398 Peter Child**| Laraine Jones**
Ceramics, Jewellery

Exciting sculptural silver work and ceramics, displayed in a woodland studio gallery. 11am-6pm (Thu 11-8pm) Wilcote Art Studios 4 Hunts Copse, Wilcote Riding Wilcote nr Finstock OX7 3DX 07927414598
peter_child@hotmail.com

OS | P

18 19 20 21 22 23 24 25 26 27

401 Flora Gregory**| Katie Hellon**
| Nimmi Naidoo *Various*

Images and installations explore landscape, order and chaos, and the human-nature relationship. 11am-6pm (Thu 11-8pm) Wilcote Art Studios 4 Hunts Copse, Wilcote Riding Wilcote nr Finstock OX7 3DX 01993 881830
wilcoteart.wordpress.com
 W | R | P

18 19 20 21 22 23 24 25 26 27

399 Karen Fern*Ceramics, Pottery*

Wheel-thrown ceramics handcrafted to celebrate the simple, beautiful, mindful moments of life. Working studio. 11am-6pm (Mon-Fri 11-3pm) Wilcote Art Studios 4 Hunts Copse, Wilcote Riding Wilcote nr Finstock OX7 3DX 07747 044320
www.buttonsandclay.co.uk

OS | P

18 19 20 21 22 23 24 25 26 27

402 Laura Middleton**| Alex Smith**
Mixed Media

Artworks and fine decoration for interiors. 11am-6pm (Thu 11-8pm) Wilcote Art Studios 4 Hunts Copse, Wilcote Riding Wilcote nr Finstock OX7 3DX 07736 957901
wilcoteart.wordpress.com

OS | P

18 19 20 21 22 23 24 25 26 27

403 Alison Munby OAS*Sculpture*

Sculpture in stone and bronze inspired by nature and the elements. 11am-6pm (Thu 11-8pm) Wilcote Art Studios 4 Hunts Copse, Wilcote Riding Wilcote nr Finstock OX7 3DX 01993 868740
www.alisonmunby.com

P

18 19 20 21 22 23 24 25 26 27

406 Crabby Taylor OAS*Ceramics*

Handbuilt smoke fired ceramics. 11am-6pm (Thu 11-8pm) Wilcote Art Studios 4 Hunts Copse, Wilcote Riding Wilcote nr Finstock OX7 3DX
ceramics@crabbytaylor.com

W | OS | R | P

18 19 20 21 22 23 24 25 26 27

404 Jennifer Newman OAS*Jewellery, Mixed Media*

Mixed media pieces influenced by earth and water. PMC silver jewellery courses. 11am-6pm (Thu 11-8pm) Wilcote Art Studios 4 Hunts Copse, Wilcote Riding Wilcote nr Finstock OX7 3DX 07831 715543
www.jennifer-newman.com

W | OS | D | R | P | T

18 19 20 21 22 23 24 25 26 27

407 Sarah Pulvertaft*Jewellery*

Silver & gold jewellery made in the workshop using traditional techniques: repeated & articulated elements create undulating surfaces. 12pm-6pm The Workshop Ranger's Lodge Charlbury OX7 3HL 07914 582688
www.sarahpulvertaft.com

OS | P

18 19 20 21 22 23 24 25 26 27

405 Fiona Peever*Sculpture*

Exhibition of hand carved sculpture in stone and cast bronze, letter cutting in stone, open studio workshop. 12-5pm Gallery Barn Hunts Copse, Wilcote Riding Wilcote nr Finstock OX7 3DX 01993 868012
www.fionapeever.com
 OS | P

18 19 20 21 22 23 24 25 26 27

408 Christine Thornton**| Catherine Binnie**
Various

Stone sculpture, painting, drawing, prints, cards, hand-thrown and decorated pottery. 11am-6pm 7 Dyers Hill, Charlbury OX7 3 QD 07450 313032
catherinebinnieartist.com

W | OS | D | R | T

18 19 20 21 22 23 24 25 26 27

409 David Pollock*Painting*

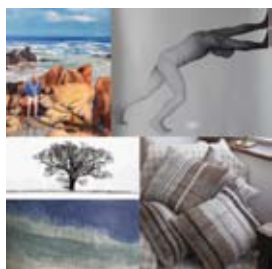
People and places from Asia, South America and Europe in watercolour and mixed media. 11am-6pm

The Studio at The Lawn
Market Street
Charlbury
OX7 3PJ

davidpollock1000@outlook.com

OS

18 19 20 21 22 23 24 25 26 27

412 St Mary's Church Artists*Various*

Eight local artist exhibiting ceramics, textiles, photography, fine art, paper and print. 11am-6pm (Sun 12-5pm)

St Mary's Church
Church Lane, Charlbury
OX7 3PX

07786 605220

bridget.tennent@gmail.com

W | R | P

18 19 20 21 22 23 24 25 26 27

410 Jon Mackay*Printmaking*

Colourful hand-pulled silk screen prints in a range of contemporary styles. 11am-5pm

The Studio
White Hart Cottage
Charlbury
OX7 3PH

07843 448433

www.jonmackay.org

OS | D

18 19 20 21 22 23 24 25 26 27

411 Cathryn Jeff*Painting*

Contemporary land/seascape and animal paintings using a variety of mediums. With 7 others in St Mary's Church. 11am-6pm (Sun 12-5pm)

St Mary's Church
Church Lane
Charlbury OX7 3PX
07929 401492

www.cj-art.co.uk

W | R

18 19 20 21 22 23 24 25 26 27

415 Jody O'Reilly*Printmaking*

Linocuts on local themes with the plates and working notes. Also sketches and other prints. 11am-5pm

The Curiosities Company
39 Sheep Street
Charlbury
OX7 3RR

jodyoreillyprints@gmail.com

W | R

18 19 20 21 22 23 24 25 26 27

416 Anna Gillespie WOA**| Kerry Forkner WOA***Glass, Printmaking, Textiles*

Colourful and illustrative stained glass and naturally-inspired textiles in garden studio. Exhibition and demonstrations. 10am-5pm (Fri 10-6pm)

6 Tanners Court, Charlbury
OX7 3RP. 01608 810402

www.annagillespieglass.co.uk

OS | D | R | T

18 19 20 21 22 23 24 25 26 27

417 Patricia Freeman*Silversmithing, Sculpture*

Silversmith exhibiting several pieces along with jewellery and sculpture in the garden. 11am-6pm

4 Enstone Rd
Charlbury
OX7 3QR
07496 256008

patriciafreeman5@gmail.com

OS | D | P

18 19 20 21 22 23 24 25 26 27

413 Wendy Clifford**| Kati Eidenbenz****| Victoria Bull***Various*

Ceramics, paintings and drawings: a vibrant and colourful exhibition of recent work. 11am-6pm

The Bell Inn
Church Street
Charlbury OX7 3PP
01608 811006

www.wendyclifford.net

W | R | P

18 19 20 21 22 23 24 25 26 27

414 George Taylor RBSA OAS | Janice Thwaites MA*Various*

Janice's continuing 'Silent Music' project and George's developing 'Elemental Series'. 12-5pm

Taylor-Thwaites Studios
Stonewalls, Sturt Road
Charlbury OX7 3EP
01608 810174

www.janicethwaites.org.uk

OS | P

18 19 20 21 22 23 24 25 26 27

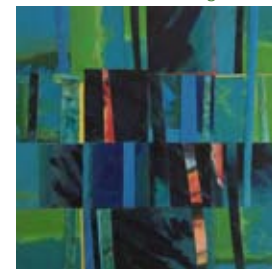
418 Jenny Haxworth*Pottery*

Hand-thrown stoneware pottery for domestic use. 11am-6pm

4 Enstone Road
Charlbury
OX7 3QR
07813 004904

W | OS | D | R | P

18 19 20 21 22 23 24 25 26 27

419 Wendy A Wilson OAS WOA*Mixed Media, Painting*

New colourful abstract paintings in various media. 11am-6pm

4 Enstone Road
Charlbury
OX7 3QR
07778 439641

wawilsonstudio@btinternet.com

W | P

18 19 20 21 22 23 24 25 26 27

420 Andrea Bates*Painting*

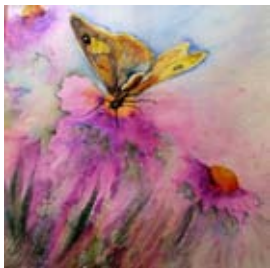
Paintings in oils and pastels. Local & foreign. 11am-6pm

Hillside
Oxford Road
Enstone
OX7 4NE
01608 677231

www.andreabates.co.uk

OS

18 19 20 21 22 23 24 25 26 27

421 Margaret Gibbs
Painting

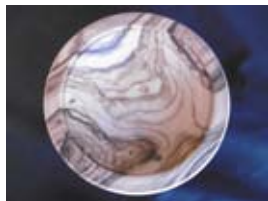
Watercolour and mixed media work and a wide selection of cards will be available to purchase.
11am-5pm
St Nicholas Church
Church Road, Chadlington
OX7 3LX
01993 832440
www.littlestockart.co.uk
W | R | P

18 19 20 21 22 23 24 25 26 27

424 Susan Neale
Painting

Exhibiting for the first time. Sensitive and lyrical portraits in watercolour. Commissions welcome.
11am-5pm
St Nicholas Church
Church Road, Chadlington
OX7 3LY
01608 676805
www.susannealeartist.co.uk
W | O | S | D | R | P

18 19 20 21 22 23 24 25 26 27

422 Martin Hallam
Wood

Pieces of turned wood, made from both indigenous timber and tropical ones (obtained from sustainable sources).
11am-5pm
St Nicholas Church
Church Road
Chadlington
OX7 3LX
woodturnerm@gmail.com

W | R | P

18 19 20 21 22 23 24 25 26 27

423 Su Hopkins
Painting

Landscapes in oil and watercolour inspired by the Oxfordshire countryside. Also photographic cards.
11am-5pm
St Nicholas Church
Church Road
Chadlington
OX7 3LX
01993 881975
su.hopkins@uwclub.net

W | R | P

18 19 20 21 22 23 24 25 26 27

427 Diana Sainsbury
Ceramics, Pottery

Diana Sainsbury works in stoneware, producing pieces that are both useful and beautiful.
11am-5pm
St Nicholas Church
Church Road, Chadlington
OX7 3LX
07748 787103
www.dunstewpottery.com

W | R | P

18 19 20 21 22 23 24 25 26 27

428 Ian Hogg
Ceramics

Handbuilt ceramics, any design that comes into my head. Mainly decorated in black and white. Also paint in oils.
11am-5pm
Sandys House
Bull Hill, Chadlington
OX7 3ND
sloopjb152@gmail.com
R

18 19 20 21 22 23 24 25 26 27

429 John Joekes
Sculpture

Poetic sculpture in stone using lettering and inspiration from nature.
11am-5pm
Sandys House
Bull Hill
Chadlington
OX7 3ND
07899 924267
www.johnjoekes.com

18 19 20 21 22 23 24 25 26 27

**425 Jane Phillips
| Carol Edwards**
Jewellery

Hand-crafted contemporary silver jewellery sometimes incorporating gemstones, pearls and gold.
11am-5pm
St Nicholas Church
Church Road
Chadlington OX7 3LX
01285 713056
mjanephillips48@gmail.com

W | R | P

18 19 20 21 22 23 24 25 26 27

426 Susan Ryan
Painting

Susan's work is always a delight. She was born partially blind with a condition which gets worse all the time.
11am-5pm
St Nicholas Church
Church Road
Chadlington
OX7 3LX

W | R | P

18 19 20 21 22 23 24 25 26 27

430 Mary Knowland WOA
Various

Drawing & painting meet spontaneously capturing essence of figure, landscape & object. Ceramics, gifts & cards. Beautiful venue.
11am-5pm
Sandys House, Bull Hill
Chadlington OX7 3ND
maryknowlandartist.com

O | S | R | T

18 19 20 21 22 23 24 25 26 27

431 Caroline Rudge
Painting, Printmaking

Beautiful paintings in egg tempera and watercolour, and intricate linocuts.
11am-5pm
Sandys House
Bull Hill
Chadlington
OX7 3ND
07811 277917
www.carolinerudge.com

18 19 20 21 22 23 24 25 26 27

**432 Eleanor Clutton-Brock
OAS**
Painting, Sculpture

Unique sculptures, exciting collages and paintings, to delight, amuse and provoke thought.
11am-5pm
The Studio, Knollbury
West End, Chadlington
OX7 3NJ
eclepaper@hotmail.com
O | S

18 19 20 21 22 23 24 25 26 27

433 Jill Colchester OAS*Drawing*

Looking At You: a collection of recent drawings concerned with the interpretation of the gaze.

11am-5pm

The Studio, Knollbury
West End
Chadlington
OX7 3NJ
07974 814615

www.jillcolchester.com

18 19 20 21 22 23 24 25 26 27

434 Helena Cummins*Ceramics*

Amusing and characterful ceramic sculpture, decorative tableware and planters using handbuilt and cast techniques.

11am-6pm

Millbrook
Brookend, Chadlington
OX7 3NF. 07539 961354
jlcmms@aol.com
OS

18 19 20 21 22 23 24 25 26 27

435 Jacky Radbone*Painting*

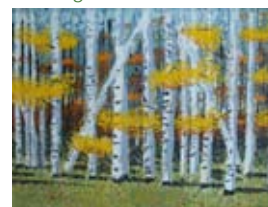
Impressionist oil paintings of land, sky and sea, painted both in the studio and out on location: all displayed in my new studio.

11am-6pm

6 Ashcroft Close
Chadlington
OX7 3NL. 01608 676540
jackyradbone.vpweb.co.uk

OS | P

18 19 20 21 22 23 24 25 26 27

439 Gordon Charles*Painting*

Lively paintings in oil and acrylic of landscapes, still life and abstract.

11am-5pm

Tolsey Cottage
Adlestrop nr Chipping Norton
GL56 0YF
07943 095524
gharr54@outlook.com

W | D | P

18 19 20 21 22 23 24 25 26 27

440 The People's Gallery*Various*

An extravaganza of colour, texture and style: painting, sculpture, mixed media and more by eight professional artists.

11am-4pm

Chipping Norton Health Centre
Russell Way
Chipping Norton
OX7 5FA
01608 642724

W | P

18 19 20 21 22 23 24 25 26 27

441 Martin Sanders*Furniture, Wood*

I create turned wood pieces made from British and some sustainable foreign hardwoods.

10am-5pm

Rockcliffe House
1 Rock Hill
Chipping Norton
OX7 5BA
01608 642989
yewturn@gmail.com

OS | D

18 19 20 21 22 23 24 25 26 27

436 Art in the Library*Painting*

An exhibition of the work of local artists and artisans at Wychwood Library.
Mon/Fri 2pm-7pm, Wed 9.30-5pm, Sat 9.30-1pm
Wychwood Library, 29 High Street
Milton-under-Wychwood
OX7 6LD. 01993 830281

oxfordshire.gov.uk/residents/leisure-and-culture/libraries
NS

18 19 20 21 22 23 24 25 26 27

437 Eleanor Campbell

| Chris Woodcock
| Stephen Woodcock

Various

Debut of 3 artists' varied, vibrant and intriguing work - ceramics, painting & printmaking - in a beautiful setting. 11am-5pm
Canterbury, West Street
Kingham OX7 6YQ
07964 040617

www.ceramech.co.uk
OS | D | P

18 19 20 21 22 23 24 25 26 27

438 Pauline Nolan

| Wendy Todd
Painting, Textiles



Bring Me Sunshine: colourful acrylic paintings and embellished textile creations. A warm welcome guaranteed.
11am-4pm
Garden Studio, Hastings Hill
Churchill nr Chipping Norton
OX7 6NA. 01608 642759

www.blendsandfriends.com
OS | P

18 19 20 21 22 23 24 25 26 27

442 Chipping Norton Theatre*Various*

Into The Woods: a themed exhibition in various media by members of ChippingNortonArts.org.
11am-6pm
The Theatre, Chipping Norton
2 Spring Street, Chipping Norton
OX7 5NL. 01608 642349
chippingnortontheatre.com
R

18 19 20 21 22 23 24 25 26 27

443 Lesley Wildman*Textiles, Mixed Media*

Landscapes created with specifically chosen and placed threads that combine to create the illusion of a three-dimensional landscape.
10am-5pm (Sun 11-4pm)

The Fibreworks
10A Middle Row
Chipping Norton
OX7 5NH
07803 147641
www.wild-ideas.co.uk

18 19 20 21 22 23 24 25 26 27

444 OCG and Friends*Various*

A diverse, exciting collection of high quality work from some of Oxfordshire's finest designer-makers: from ceramics, glass & jewellery to textiles and wood.
11am-5pm

The Town Hall, Chipping Norton
OX7 5AD. 01608 641295
judithgussin@talktalk.net
W | R | T

18 19 20 21 22 23 24 25 26 27

445 Rosemary Atkins*Printmaking*

I am primarily producing lino-cut prints, mostly based on the natural world: trees, stone walls, mountains.
12pm-5pm
4 Alfred Terrace, West End
Chipping Norton
OX7 5HB
07855 902894
rosemaryatkins.co.uk

OS | R

18 19 20 21 22 23 24 25 26 27

446 Carol Harvey*Painting*

Delicately-balanced pastel paintings in new studio space. Mini demos and a chance to have a go. Coffee and cake.
11am-6pm
Bliss View Cottage
Worcester Road
Chipping Norton
OX7 5XS
07795 515415
harveysfm65@gmail.com

W | OS | D | R | P | T

18 19 20 21 22 23 24 25 26 27

447 Whispering Knights Project Neolithic Echoes*Miscellaneous*

Environmental land art near the Rollright Stone Circle next to the Whispering Knights Dolmen.
11am-6pm
Brighthill Farm, Little Rollright
nr Chipping Norton
OX7 5QT
www.whisperingknights.org
P | NS 4-27 May

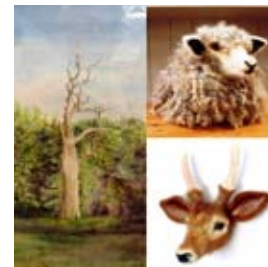
18 19 20 21 22 23 24 25 26 27

451 Art@Great Rollright*Various*

A talented group of diverse artists demonstrating a variety of unique art: from painting and photography to jewellery and sculpture.
11am-5pm
Great Rollright Village Hall
High Street
Great Rollright
OX7 5RY
01608 730268

W | D | R | P

18 19 20 21 22 23 24 25 26 27

452 Jane Abbott*Painting, Textiles*

One artist's journey through nature featuring paintings, textiles and other creative media. Refreshments available. 10.30am-5pm (Mon/Tue/Fri 11-3pm)
Grange Farm, Church End
Swerford OX7 4AX
01608 737313
janeabbott099@gmail.com
OS | D | R | P | T

18 19 20 21 22 23 24 25 26 27

453 Pam Franklin*Painting*

Contemporary thoughtful paintings in studio surrounded by yard & cottage garden. Developing studio space offering art classes & more.
11am-6pm
Potato Town, Banbury Road
Swerford nr Chipping Norton
OX7 4AP
07951 821015
www.potatotown.co.uk

OS | R | P

18 19 20 21 22 23 24 25 26 27

448 Caroline Nixon WOA*Textiles*

Botanical contact print on textile and paper, enhanced with natural pigment and hand stitch. Wall art, home textiles and clothing. 11am-5.30pm
Little Barn, Vicarage Lane
Long Compton, nr Chipping Norton CV36 5LH. 07557 022531
handmadetextilesbycaroline.co.uk
D | R | P | T

18 19 20 21 22 23 24 25 26 27

449 David Blakemore WOA*Painting*

A unique style of oil painting with atmosphere, narrative and an undercurrent of surrealism.
11am-5pm
Great Rollright Village Hall
High Street
Great Rollright OX7 5RY
07946 647165
blakemoreart.com
W | D | R | P

18 19 20 21 22 23 24 25 26 27

450 Melanie Charles*Painting*

Bright and bold animal art, a traditional subject with a contemporary twist, a fabulous statement on anyone's wall! Also at venue 465. 11am-5pm
Great Rollright Village Hall
High Street, Great Rollright
OX7 5RY. 07803 598444
melaniecharlesartist.co.uk
W | D | R | P

18 19 20 21 22 23 24 25 26 27

454 Cliff Kinch*Photography*

Beautiful landscape and wildlife photographs from around Oxfordshire and the UK.
12pm-6pm (Thu/Fri 3-7pm)
Old Well House
Main Road, Milcombe
nr Banbury OX15 4RR
07768 724724
cliffkinchphotography.co.uk
P

18 19 20 21 22 23 24 25 26 27

455 Belinda Ellis | Tim Cousins*Painting*

Towards Abstraction: painting, prints and drawings with a strong landscape connection.
11am-6pm (Thurs/Fri 11-8pm) or by appt.
St Mary's Lodge
Church Street
Bloxxham
OX15 4ES
01295 720302
www.belindaellis.co.uk
OS | R

18 19 20 21 22 23 24 25 26 27

456 Ronny Loxton*Painting*

Detailed paintings of natural life & rural landscapes in the beautiful historic Swalcliffe Barn.
10am-5pm
The Swalcliffe Barn
Swalcliffe
nr Banbury
OX15 5DR
01295 788146
www.ronnyloxton.com

W | D | R | P | T

18 19 20 21 22 23 24 25 26 27

457 Ginny Bennett
Painting

A selection of mainly landscapes, some of the beautiful local area. I like to choose subjects that are just a little different. 10am-5pm
Swalcliffe Church
Swalcliffe, nr Banbury
OX15 5EH. 07870 782668
ginnybennett@googlemail.com
R|P

18 19 20 21 22 23 24 25 26 27

458 Nigel Fletcher
Painting

A large exhibition open for 2 weeks from 11th to 27th May.
10am-6pm
Swalcliffe Village Hall
Swalcliffe
OX15 5EQ
01295 780662
nigelfletcher.co.uk

W|O S|D|R|P|T 11-27 May

18 19 20 21 22 23 24 25 26 27

459 17 @ Temple Mill
Various

Forged sculpture, various art, photography, wood, jewellery, pottery, ceramics, carving, yurt making, willow weaving. Café.
11am-6pm
Temple Mill, Sibford Gower
(on road from Firs Garage Hook Norton to Sibford Gower) nr Banbury OX15 5DA. 01295 780418
www.at-temple-mill.co.uk
W|D|R|P

18 19 20 21 22 23 24 25 26 27

463 Martin Damen
Wood

Open workshop, demonstrations and exhibition by a maker of hand-carved spoons & bowls celebrating 10 years' participation in Artweeks. 11am-6pm
Honeysuckle Cottage, The Green
Great Bourton nr Banbury
OX17 1QH. 01295 758519
www.martin-damen.co.uk
O S|D|P|T

18 19 20 21 22 23 24 25 26 27

464 Jane Wimbury
Glass

Colourful hand-crafted fun and functional glass objet d'art; quirky lampwork creatures, with demonstrations.
11am-6pm
Longridge, Spring Lane, Little Bourton nr Banbury OX17 1RB
07765 016642
cosycreativecrafts.wordpress.com

W|O S|D|R|P|T

18 19 20 21 22 23 24 25 26 27

465 Cool Contours
Various

Fifteen artists, one stunning location. Experience a variety of art inside and out at Cool Contours Venue.
11am-6pm (Thu 11-8pm)
Cool Contours Venue
Warden Hill Farm
Chipping Warden
nr Banbury OX17 1AJ
07973 175206
www.coolcontours.co.uk

W|O S|D|R|P

18 19 20 21 22 23 24 25 26 27

460 Penny Carey
Painting, Printmaking

Open studio. Landscapes in a variety of media: monotypes, collagraphs, mixed media, painting and pastels.
11am-6pm
Wardens Post Studio
Moor Lane, South Newington
nr Banbury
OX15 4JQ
01295 720433
landpcarey1@icloud.com

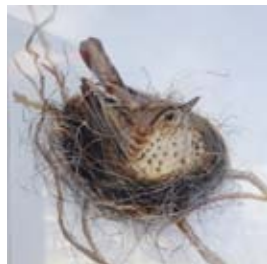
O S

18 19 20 21 22 23 24 25 26 27

**461 Jill Endicott
| Lizzie Waterfield**
Jewellery, Printmaking

Jill Endicott: original sterling silver jewellery. Lizzie Waterfield: unique illustrations.
10am-6pm
Chapel Cottage, Chapel Lane
Balscote nr Banbury OX15 6JN
07810 864273
lizziewaterfieldillustration.com
W|R|P

18 19 20 21 22 23 24 25 26 27

462 Pippa Bramham
Textiles

Textile art using various print, dyed layered fabric backgrounds, with hand or machine stitching.
12pm-6pm
Green End, Whiteway
Mollington
nr Banbury OX17 1BL
01295 758589
pippabramham.weebly.com
R|P

18 19 20 21 22 23 24 25 26 27

466 Ann Crawford
Mixed Media, Printmaking

Stone lithographs, paintings and drawings: animals, birds, the circus and fables.
2pm-5pm
Wheatsheaf House
The Green, Culworth
nr Banbury OX17 2BB
01295 768818
crawford.litho@gmail.com

O S|P

18 19 20 21 22 23 24 25 26 27

**467 Julie Herd
| Miranda La Mutanta**
Drawing

Miranda and Julie present a collection of inky portrait drawings of famous and significant women through time. 8am-5pm (Sat 9-4pm, Sun 9-3pm)
The Forge Café, High Street
Culworth nr Banbury
OX17 2AZ. 07940 590907
www.julieherd.com
W|R|P

11-27 May

18 19 20 21 22 23 24 25 26 27

468 The Heseltine Gallery
Various

Annual Selected Open Exhibition by artists from North Oxfordshire & South Northamptonshire area.
10am-4pm (Sat/Sun 11am-4pm)
Chenderit School, Archery Road
Middleton Cheney
nr Banbury
OX17 2QR
01295 711567
chenderit.northants.sch.uk/michael-heseltine-gallery.asp

W|P

(runs from 11th May)

18 19 20 21 22 23 24 25 26 27

469 Pam Foley
Ceramics, Sculpture


Exhibiting sculpture, drawings and ceramics in my studio. 11am-6pm

Unit 2-C, Green Acres Farm
Main Road (the A422)
Farthinghoe nr Banbury
NN13 5NU
07931 774469
www.pamfoley.co.uk

OS

18 19 20 21 22 23 24 25 26 27

472 Banbury Artists Cooperative
Various


An eclectic mix of artists working in a variety of media run this friendly gallery. 10am-3pm (Sat 10-4pm)

Church Lane Gallery
3 Victory Buildings, Church Lane
Banbury OX16 5LT
churchlanegallery.com

W (also 4th 6-11th & 13-17th May)

18 19 20 21 22 23 24 25 26 27

470 The Mill Arts Centre Trust
Various


The Mill Art Centre's pop up exhibition in Castle Quay Shopping Centre. See an array of wonderful work created by our talented students.

11am-2pm (Sat 10-4pm)
Castle Quay Shopping Centre
Castle Street
Banbury
OX16 5UN
castlequay.co.uk

W | OS | P | T

18 19 20 21 22 23 24 25 26 27

471 The Mill Arts Centre Trust
Various


An exhibition showcasing work created by artists aged 16-25 years to support and pioneer new and emerging talent. 9.30am-6pm (Sat 10-6pm, Sun 10-1pm)
The Mill Arts Centre, Spiceball Park Road, Banbury
OX16 5QE. 01295 227177
themillartscentre.co.uk

W | R | P (runs from 4th May)

18 19 20 21 22 23 24 25 26 27

474 Nathan Barry
Photography


Dramatic light captured both locally & worldwide; bold and elegant landscape photography depicting natural beauty.

11am-5pm (Mon 10-1pm)
Ennis House, Twyford Grove
Twyford nr Adderbury
OX17 3JD. 07793 046079
nathanbarryphotography.com

W | R | P

18 19 20 21 22 23 24 25 26 27

475 Paul Murphy | Sharon Woods | Sarah Robertson
Various


An eclectic mix of prints, sculpture, painting and mixed media: an exciting and vibrant collective. 11am-5pm
The Corner House
2 Banbury Lane
King's Sutton OX17 3RU
07768 731798
pmmurph01@gmail.com

W | OS | D | P

18 19 20 21 22 23 24 25 26 27

478 Jill Collier | Judith Shaw | Helen Woolner
Ceramics, Sculpture


Three ceramic artists featuring abstract & wildlife sculpture, raku & functional ceramics. Taster sessions & ceramics workshops. 11.30am-3pm (Sat/Sun B hol Mon 11.30-5pm or by appt)
1 Astrop Rd, King's Sutton nr Banbury OX17 3PG. 07775 512141
www.firedupstudios.co.uk

OS | D | T

18 19 20 21 22 23 24 25 26 27

476 King's Sutton Collective
Various


Eight artists, affordable paintings, landscapes, animals, still life, and handmade jewellery. Delicious teas. Easy parking. 11.30am-6pm (Thu 11.30-8pm; Sun 12.30-5.30pm)
St Peter & St Paul Church
The Square, King's Sutton
OX17 3RJ. 01295 810108
allthekingsartists.weebly.com

W | D | R

18 19 20 21 22 23 24 25 26 27

479 Kat Onions
Glass


Contemporary glass etchings alongside paintings inspired by nature and beautiful photography in a historic pub. 12pm-6pm

The Duke at Clifton
Main Road
Clifton
nr Deddington
OX15 0PE
01869 226334

R | P

18 19 20 21 22 23 24 25 26 27

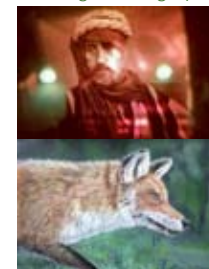
477 Margot Bell OPC
Printmaking


Woodcut prints of creatures great and small, both real and mythological in black and white and colour. Studies of trees and landscapes. 11.30am-5.30pm

Bell House, 5 The Square, King's Sutton OX17 3RQ. 01295 811166
margot.bell@mypostoffice.co.uk

OS | P

18 19 20 21 22 23 24 25 26 27

480 Sam Brown | Janet Bird
Painting, Photography


Paintings inspired by nature and beautiful photography exhibited alongside contemporary glass etchings in a historic pub. 12pm-6pm

The Duke at Clifton, Main Road
Clifton nr Deddington
OX15 0PE. 01869 226334

R | P

18 19 20 21 22 23 24 25 26 27

Index of exhibiting artists											
Aaltonen, Fatmagul	273	Belcher, Antony	353	Brunskill, Susanna	245	Clocksini, Ella	85	Daniels, Ely	285	Elmore, Pat	191
Abbiss Stubbs, Susan	385	Belcher, Lee	412, 440	Buchan, Alistair	253	Clutton-Brock, Eleanor	432	Daunt, Kate	195, 459	Endicott, Jill	461
Abbott, Jane	442, 452	Bell, Margot	477	Buckel, Fran	329	Cochrane, James C.	43	Davies, Charlie	251, 388	England, David	134
Abela, Joanne	317	Benfield, Valma	329, 451	Buckle, Alexandra	383	Coker, Kate	232	Davies, Chris	397	Enser, Fleur	459
Ablitt, Emma	190	Bennett, Ginny	457	Buffery, Alexa	329	Colchester, Jill	433	Davies, Lacey	90	Everett, Angela	451
Acevedo, Mariana	209	Bennett, Leonie	53	Buffery, Marc	329	Coleridge, Harriet	268	Davis, Emma	97, 103	Eyres, Annabel	81
Addyman, Anne	117	Benz, Emma	284	Bugyte, Agneta	103	Coles, Gerry	297	Davis, Tony	385	Faber, Tom	44
Adlington, Kit	77, 388	Bicknell, Maggie	59	Bull, Janet	251, 388	Collier, Charlie	459	Day, Natalie	339	Fairfax-Cholmeley, Rosie	1
Aird-Rossiter, Caroline	288	Bidgood, Susie	280	Bull, Victoria	413	Collier, Jill	478	Day Dawson, Kate	3	Farrands, Rob	71
Aird-Rossiter, Toby	288	Bignold, Bruce	257	Burbidge, Philip	116	Collier, Michael	372	Dearlove, Valerie	258	Fernor, Emily	360
Allan, Sarah	117	Binnie, Catherine	49, 408	Burke, Rosy	476	Collins, Marjorie	18	Dewey, Hilary	123	Fern, Karen	399
Allender, Elaine	132	Birchall, Jackie	310	Burletson, Lucy	246	Collinson, Ann	103	Diggle, Gillian	254	Feurtado, Stuart	318
Alner, Mo	178	Bird, Janet	480	Burniston, Kerry	396	Condry, Ren	334	Dillon, Anna	250	Filipek, Monica	79
Anderson, Leila	196	Bird, Meryl	317	Bush, Anna-Marie	90	Conway, Jackie	91	Dixon, Jo	140	Fitzgerald, Mark	351
Arcus, Iulian	49	Birkbeck, Nadia	476	Butterfield, Neil	7	Coombs, Brigitta	329	Dobbenie, Wendy	204	Fletcher, Nigel	458
Arlidge, Anne	293	Birkbeck, Jane	28	Caban, Carlos	26	Coon, Bobbie	372	Dodd, Ruth	88	Floreay-Hitchcox, Claire	298
Armitage, Pamela	36, 135	Blakemore, David	160, 329, 449, 451	Caldecott, Rose Marie	360	Cooney, Siobhan	30, 49	Donaldson, Melanie	141	Flower, Marion	196
Atkins, Rosemary	442, 445	Blakemore, Nicholas	78	Cameron-Kirby, Eileen	49	Cooper, Anita	412	Dority, Sally	72	Foley, Pam	65, 469
Attewill, Caddy	305	Blakey, Gabriella	444	Campbell, Eleanor	437	Cooper, Jill	204	Dove, Phillip	8	Forbes, Debby	139
Audus, Hilary	210	Blanchard, Alison	16	Campion, Stella	98	Cormack, Felicity	139	Draisey, Mark	287	Ford, Fay	299
Avery, Susan	63	Blandy, John	2	Carey, Penny	460	Corral, Bronwen	459	Drew, Ben	193	Ford, Glenn	297
Bahri, Sylvia	76, 117	Blenkinsop, Tessa	42	Carr Garbe, Lina	379	Cotterill, William	61, 175	Drew, Sue	193	Foreman, Neil	291
Bainbridge, Christine E	311	Bliss, David	136	Carrington Freeman, Emily	108	Cousins, Tim	455	Drew, Patricia	372	Forkner, Kerry	416
Bains, Satnam	81, 271	Blyth, Jenny	5	Carter, Kate	297	Cowdry, Mary	253	Drury, Neil	66	Fortes, Sarah	459
Bains, Sue	36	Bolles, Sarah	130	Carter, Martin	297	Cox, Gill	329	Ducker, Rachel	62	Fox, Richard	400
Baker, Mavina	307	Bolles, Sarah	177	Cash, Martin	326	Craddock, Inge	210	Duff, Jane	255	Frances, Sue	385
Banerji, Sara	73	Bond, Sarah	177	Catena, Flavia	160	Craig, Fredrica	385	Duffy, Rosalind	366	Francis, Yvonne Mabs	384
Barber, Simon	292	Bonfiglioli, Amanda	370	Cave, Paula	103	Crawford, Ann	466	Dunford Wood, Ely	459	Frank, Dianne	103, 105
Barroca, Cristina	49	Bosher, Michelle	350	Chadwick, Juliet	103, 104	Crawford, Lizzie	291	Dunkley, Janet	88	Franklin, Alan	93
Barry, Nathan	474	Bosley, Jo	211	Chafer, Miesje	45	Croft, Tom	13	Durrant, Nicola	459	Franklin, Pam	442, 453
Bartlett, Gareth	451	Bowen, Dylan	386	Chappelle, Fiona	222	Cross, Claire	228	Eagle, Harriet	38	Franklin, Peter	372
Basilevitch, Sophie	137	Bowman, Sarah	459	Charles, Gordon	439	Cross, Janet	14, 36	Early, Genevieve	385	Fraser, Ian	210
Batchelor, Ann	301	Boyle, Marie	379	Charles, Melanie	450, 451, 465	Crouch, Ros	317	Eastland, Clive	207	Freeman, Dionne	225
Bateman-Paris, Celine	101	Bradford, Rose	218	Child, Peter	398	Crowson, Neville	354	Eccles, Anthony	92	Freeman, Patricia	65, 417
Bateman-Paris, Merlin	101	Bradley, Jackie	476	Chorley, Sally	329	Crute, John	210	Eccles, Christine	228	French, Karen L	29, 152
Bates, Andrea	420, 440	Bradshaw, Rene	356	Christensen, Helle	110	Cruz Duran, Sergio	178	Edwards, Carol	425	Friedemann, Trish	372
Bates, Sandra	117	Bramham, Pippa	462	Chuey, Uniz	64	Cumming, Vicky	11, 388	Edwards, Paul	48	Frishberg, Tam	20
Baxter, Shelagh	188	Bray, Ian	168	Cilia, Joe	188	Cummins, Helena	434	Efstathiou, Zoe	23	Fuentes, Susy	357
Bayetto, Maureen	329	Brewer, Andrea	281	Clarke, Anthea	117	Cuttle, Mags	215	Eidenbenz, Kati	413	Fulljames, Penelope	103, 106
Bayton, Maeve	152, 312	Brooke-Little, Merlin	385	Clarke, Bernard	117	Daggitt, Steve	372	Elgar, Bianca	160	Fyfe-Jackson, Claire	394
Beatson Wood, Angela	80	Brown, David	370	Clarke, Toni	139	Dale, Mary Ann	117	Elliott, Derek	163	Fyvie, Pamela	374
		Brown, David	379	Clay, Mark	171	Dalglish, Tova	90	Ellis, Belinda	455	Gajdo, Brigitta	297
		Brown, Sam	480	Clifford, Wendy	413	Damen, Martin	463	Ellis Gemmell, Jill	329	Ganney, Susan	239

Gardner, Addy	34	Harvey, Callum	334	Hugill, Enid	451	Kidd, Richard	154	Mackesy, William	68	Murphy, Paul	475
Gargas, Piotr	221	Harvey, Carol	440, 442, 446	Hunter, Heather	317	Kilroe, Janine	103, 340	MacRitchie, Helen	314, 444	Naidoo, Nimmi	401
Garrett, Sandi	329	Hawes, John	127	Hurley, Brenda	321	Kimminau-Jobling, Sally	379	Malden, Josephine	3	Nairne Townsend, M	188
Gascoigne, Liz	253	Hawkes, Carolyn	213	Hyman, Caroline	279	Kinch, Cliff	454	Mann, Lis	451	Neal, Linda	88
Geddes, Susanna	117	Haxworth, Jenny	418	Ibsen, Antoinette	161	King, David	451	Mant, Graham	444	Neale, Susan	329, 424
Gee, Rachel	167	Hayden, Brenda	442, 459	Illingworth, Richard	253	King, Heather	49	Marchant, Sarah	256	Newhofer, Frank	55
Gibbs, Margaret	421	Hayhurst, Alistair	459	Image, Mazz	82, 149	King, Philip	147	Marcus, Annia	444	Newhofer, Wendy	56
Gibson, Pauline	210	Hazelden, Andrew	371, 388	Irigoien Zozaya, Sheila I	188	Kinsella, Lucy	103	Marshall, Jo	205	Newman, Jennifer	404
Gill, Andy	459	Hehir, Alison	46	Iving, Rodas	253	Kirkham, Elizabeth	372	Marsland, Ken	372	Newson, Elaine	180
Gill, Rachel	273	Hellon, Katie	401	Ison, Susan	178	Knapp, Jon	297	Martin, Debbie	185	Nichols, Jackie	317
Gillespie, Anna	416	Helm, Susie	352	Jackson, Jeanne	210, 308	Knight, Adam	6	Martin, Debrah	29, 103, 152, 178, 241	Nicholson, Tuula	338
Gillespie, Maureen	393, 440	Henderson, Greta	117	Jackson, Terry	291	Knight, Faye	341	Martinez, Raymond	328	Nixon, Caroline	103, 440, 442, 448
Giorgeschi, Massimiliano	378	Henderson, Juliet	117	Jackson-Houlston, CM	221	Knowland, Mary	430	Matthews, Edith	210	Noel, Diana	319
Gledhill, Stacey	75	Hendy, Ella	476	James, Trudi	221	Koster, Tom	237	Mazz Image	82, 149	Nolan, Pauline	438
Goddard, Victoria Zoe	249	Heppell, Neil	388	Jamieson, Kay	29, 152	Kruger, Hayley	221	McClelland, Robin	300	Nor	49
Goode, David	133	Herd, Julie	467	Jane, Emily	297	La Mutanta, Miranda	467	McCormack, Jaine	295	Norris, Philippa	22, 444
Grace, Colin	303	Hill, Susan	221	Jaquet, Cherry	388	Lancaster, Peter	248	McCormack, Sheena	476	Norris, Valerie	382
Greene, Michele	379	Hipkiss, Kate	54	Javadi, Leila	216	Lathar, Kamal	29, 152	Mead, Valerie	142	North, William	375
Gregory, Flora	401	Hislop, Amanda	207, 444	Jeff, Cathryn	411, 412, 442	Leach, Tina	297	Meara, Rosemary	372	O'Connor, Marieke	83
Griffiths, Jane	473	Hobson, Stephanie	372	Jeffs, Patrick	309	Lelliott, Calliste	128	Meinhold-Morgan, H	395	O'Donnell, Kayleigh	178
Griffiths, Sian	388	Hoefl, Sandra	103	Jenica	188	Lenko, Patricia	319	Middleton, Laura	402	O'Driscoll, Suzanne	391
Grose, Julie	36, 267	Hoffman, Beatrice	183	Jenkin, Annie	188	Lester, Graham	322	Miller, Miranda	164, 167	O'Reilly, Jody	415
Guastalla, Bruno	138	Hogg, Ali	170	Joekes, John	429	Levell, Sally	130	Mills, Anne	194	O'Sullivan, Christine	342
Gunter, John	198	Hogg, Ian	428	Johnson, Gabriele	221	Lever, Anna	210, 337	Mills, Marian	291	Oakes, Chris	178
Gussin, Judith	21, 444	Hogg, Jane	170	Johnson, Tlws	444	Lever, Ticia	221	Milroy, James	33	Onions, Kat	479
Haigh, Nadine	208	Holden, Helen	224	Jones, Alison	210, 221	Levison, Nina	329	Minter, Paul	221	Opher, Anna	143
Hailstone, John	259	Holland, Ann	372	Jones, Laraine	398	Lewin, Angie	31	Mitchenall, Chris	291	Organ, Ken	139, 235
Hainsworth, Jane	19	Holland, Joan	116	Jones, Myrica	412	Lewis, Gareth	253	Moncrieff, Sarah	376	Orr, Charlotte	372
Hall, Tessa	103	Holt, Jonathan	24	Jones, Patsy	201	Lillywhite, Joanne	289	Monteath, Stephanie	176	Orrom Swan, Melissa	343
Hallam, Martin	422	Holt, Pauline	444	Jones, Philip	384	Lines, Jenny	396	Moor, Malcolm	103, 237	Owen, Clare	252
Hamand, Michael	27	Holuj, Kirsteen	444	Jorole	127	Lingwood, Patrick	125	Moore, Andrew	202	Owen, Marion	228
Hamill, Nathalie	210, 232	Hope, Jane	114	Jose, Phil	350	Linton, Elizabeth	210, 444	Morgans, Becky	118	Page, Debbie	264, 344
Hamilton, James	372	Hopkins, Su	423	Joy, Karen	380	Loken, Julia	99	Morris, Alison	9	Pakeman, Helen	190
Hamilton, Nic	372	Horton, Margaret	228	Karatzios, Sarah	372	Lowe, JB	306	Morton, Chrissy	195	Palmer, Guen	333
Hammersley, Alex	278	Houghton, Kerry	195	Kavanagh, Michael	87	Lowe, Mike	154	Moser, Jane	10	Parker, Jessica	355
Hampton, Charles	92, 126	Houlihan, Charlotte	242	Kay, Andrew	122	Loxton, Ronny	456	Mostyn, Casimira	155, 380	Parker-Woolway, Tara	189
Hanson, Jane	210, 313, 444	Howard, Debbie	359	Kazmierczuk, Elaine	159	Luscombe, Dominika	117	Moxley, Susan	40	Parrey, John	269
Harcourt, Geoffrey	270	Howdill, Caroline	372	Kelso, James	275	Lyons, Sue	121	Muddiman, Lois	167	Pawlyn, Angela	207
Harden, Judy	329	Hudson, Biddy	124, 317	Kenner, Rahima	139, 219	Maas, Caroline	109, 268	Munby, Alison	403	Pawlyn, Jane	272
Hardyman, Robyn	37	Hughes, Jackie	288	Kensey, Ian	173	Macdonald, Anne	388	Munby, Teresa	47, 388	Pawlyn, Stephen	272
Harrison, Lyn	211	Hughes, Katherine	121	Kerr, Lin	206, 207	Macfarlane, Jamie	195	Murphy, David	412	Payne, Barbara	210, 221
Harrison Caban, Barbara	25	Hughes, Val	188	Kerridge, Laura	451	Macfarlane, Noriko	195, 459	Murphy, Laura	210, 442	Payne, Judith	260
Harvey, Albert	253	Hughes, Wendy	229	Kestner, Alan	152	Mackay, Jon	410				

Peeters, Vital	17	Robinson, Dee	279	Shepherd, Marie	393, 440	Stapleton, Jackie	451	Tucker, Rosemary	372	Wigg, Julie	390
Peever, Fiona	405	Robinson, Jim	139	Shepherd, Tim	372	Stephen, John	261	Tucker, Sue	412	Wildi, Chris	186
Penn, Janet	356	Robinson, Yvonne	187	Sherlaw-Johnson, Griselda	396	Stephens, Richard	372	Turnbull, Kate	90	Wildman, Andrew	442
Perryman, Graham	381	Robinson-Spoon, Hester	256	Sherlaw-Johnson, Rachael	396	Stewart, Anne	28	Turner, David	459	Wildman, Lesley	442, 443
Phelps, Maryon	28	Rooke, Peter	110	Sherlaw-Johnson, Rebecca	396	Stewart Liberty, Sophia	302	Turner, Lisa	178	Wilkinson, Jan	440, 451
Philips, Janine	324	Rose, Jessica	207	Shield, Iain	181	Stiles, Kieran	67	Turner, Ronald	178	Wilkinson, Kate	323
Phillips, Jane	425	Rossington, Fiona	329	Shrimpton, Peter	368	Stillwell, Jane	459	Ureta, Freya	476	Williams, Bridget	32
Phillips, Lucy	111	Rossiter, Henry	288	Side, Sue	176	Stokes, Gordon	145	Varley, Penny	160, 329, 451	Williams, David	176, 352
Phillips, Yvette	103, 243	Rossiter, Lily	288	Sieber, Vivien	89	Storrs, Charlotte	231	Venables, Janice	372	Williams, Deborah	165
Philson, Kathleen	139	Rothero, Chris	379	Simpson, Dougie	227, 228	Strange, Robert	235	Vickery, Nic	363	Williams, Frances	337
Phipps, David	372	Rozario, Heather	348	Skene, Jennifer	276	Strother, Jane	86	Vogt, Karen	188	Williams, Lesley	337
Phipps, Rosie	15, 29, 152	Ruddock, Jan	317	Skertchly, Oliver	129	Stuart-Hamilton, Clova	223	von Stumm, Johannes	197	Williams, Sarah	117
Pickford, Jenny	459	Rudge, Caroline	431	Skinner, Tom Arran	81	Studdert, Elizabeth	379	Walker, Alice	369	Wilson, Robin	1
Pigott, Isobel	178	Rutty, Rachael	28	Sledmere, Malisa	45	Summers, Bob	162	Walker, Andrew J	165	Wilson, Wendy A.	419
Pike, Louise	90	Ryan, Susan	426	Slameck, Jane	285	Summers, Louise	162	Wallace, Rose	103, 107	Wimbury, Jane	464
Pilgrim, Lynn	372	Ryzhakova, Nadia	349	Smith, Alex	402	Superverga, Miles	186	Wallington, Michele	336	Winston, Willow	220
Pollock, David	409	Sabali Pots	49	Smith, Amanda	178	Surman, Amy	81	Ward Shanks, Pamela	188	Withers, Sara	178
Powell, Alec	291	Sabin, Jonquil	459	Smith, Cassandra	49	Swan, Angela	296	Ware, Anne	260	Wong, Eleanor	103, 244
Powell, Tessa	291	Sadler, Claire Christie	41	Smith, Jack	146	Sylvester, Lucy	442	Warren, Ann	152	Woodcock, Chris	437
Powell, Valerie	286	Sainsbury, Diana	427	Smith, Jenny	329, 355	Tacq, Christine	317	Warrener, Patricia	277	Woodcock, Stephen	437
Pratt, Grant	210	Salmon, Jo	169	Smith, Jill	178, 203	Tams, Mizue	412	Waterfield, Lizzie	461	Woods, Rachel	36
Pretorius, Dirk	392	Salway, Gill	139	Smith, Martin	35	Taplin, Roger	356	Waterhouse, Mick	379	Woods, Sharon	475
Pulvertaft, Sarah	407	Sanders, Martin	441, 442	Smith, Sarah	476	Taylor, Crabby	406	Wattam, Lula	168	Woolner, Helen	478
Pumphrey, Jacqueline	188	Sarosi, Mia	221	Snaith, Sophie	226	Taylor, George	414	Wattam, Marcus	168	Woolstone, Polly	178
Radbone, Jacky	435	Savage, Annie	379	Somerfield, Jean	57	Taylor, Rosie	185	Webster, Claire	4	Wootton, Annie	161
Radcliffe, Angela	347	Sayers, Megan	274	Somerscales, John	373	Teall, Liz	210	Webster, Jo	188	Wright, Suzy	365
Ramos, Benedict	387	Sayers, Sallie	274	Sonsino, Simon	207	Tennent, Bridget	412	Weinstock, Sue	12	Wrottesley, Michael	251
Rand-Bell, Zana	38	Schaumloeffel, Silvi	346	Sowter, Victoria	125	Teper, Danielle	372	Wellesley, Margie	304	Wyatt, Sally	325, 330
Raven, Sheila	361	Scott, Manja	52	Spackman, Sarah	144	Thomas, Ann	451	Wenden, Sarah	111	Wykes, Jean	372
Rayson, Kath	188	Scott, Neil	253	Sparling, Maureen	440	Thomas, Bee	240	Wentworth, Seija	187	Wyllder, Laura Jane	290
Reade, Mary	212	Seaton, John	178	Sparrow, Beth	200	Thomson, Tony	60	West, Malcolm	236	Yehia, Soraya	476
Redhead, Rosie	297	Sednaoui, Laura	331	Speed, Hattie	253	Thornton, Christine	49, 210, 408	Westerman, Linda	451	Young, Helen J	247
Reeves, Lesley	29	Sellen, Rae	253	Spencer, Sally	210, 221	Thorpe, Carole	117	Wheatley, Bridget	120	Yuan, Lihua	172
Rhys, Morna	131	Sellwood, Lyn	117	Spring, Mike	459	Thorpe, Rob	188	Wheeler, Susan	217	Zinovieff, Annabelle	188
Rice, Graham	361	Seymour-Wells, Ian	442	Squires, Victoria	251	Thwaites, Janice	414	Wheeler, Maggie	304		
Rich, Sharon	192, 345	Shakespeare, Francesca	39	Stacey, Pip	36, 103, 182	TinkerMade	350	White, Eric	367		
Richards, Jackie	3	Shannon-Little, Elizabeth	168	Stagg, Selma	444	Todd, Wendy	438	White, Helen C	164, 166		
Riddell, Harriet	283	Shaw, Barbara	316	Stanbury, Nelly	81	Tomlinson, Jane	364	White, Josephine	329	Galleries and business exhibitions	
Ritchie, Jan	178	Shaw, Judith	478	Stanley, Carrie	362	Tomlinson, Paul	364	Whitehead, Flick	262	Alex-HammersleyArt	278
Ritson, Caroline	221	Shelley, Camilla	266	Stanton, Diana	294	Townsend, Christopher	332	Whitmore, Athol	103	Art Studio (Jericho)	64
Roberts, Marjut	187	Shelton, Hugh	58	Stanway, Aline	138	Tracey-Bower, Vivien	49	Whitten, Gill	301	Bates and Larnbourne	315
Roberts, Pinkie	81, 95	Shelton, Vivien	58	Stanway, Victoria	156	Tremaine, Dawn	379	Whittington, Gilly	87	Blackwell's Art Shop	151
Robertson, Sarah	475	Shepherd, Louise	260	Staples, Ian	385	Trezise, Hayley 'Raggedy'	263	Whyte, Jenny	297	Church Lane Gallery, Banbury	472
										Cecily's Fund	328

Chipping Norton Theatre	442	LiterArtes	152	Oxford Photographers	69
Cool Contours Venue	465	Makespace Oxford	49	Oxford Pride	149
Cornerstone Arts Centre	241	Making Marks	90	Oxfordshire Chinese Brush	
David Goode Sculpture	133	Modern Chinese Art	150	Painting Group	179
fitch & fellows	320	New Hinksey Arts	139	Oxfordshire Mind	230
Jenny Blyth Fine Art	34, 35	North Cotswold Arts Association		Restore (Manzil Way)	94
Maison Française d'Oxford	48		329	Restore (Didcot)	238
Mobile CArt Gallery	79	North Moreton Artists	251	River & Rowing Museum	265
Oxford Printmakers Co-operative (OPC)	102	OCC and Friends	444	Sculpture Workshops Oxford	183
Painting For Freedom	154	Old School Art	168	SS Philip & James Primary	50
Sarah Wiseman Gallery	31	Peach Croft Barn Artists	221	St Mary & St John Primary	113
Sewell Centre Gallery, Radley College	220	SJE Arts Cloister Gallery	103	St Matthew's Church & Community	147
The Heseltine Gallery	468	Sparksartists	317	Studios at AOFS	153
The Jam Factory, Oxford	158	St Marys Church Artists	412	Sunningwell School of Art	214
West Ox Arts Gallery	339-350	Sylva Foundation	253	The Oxfordshire Museum	389
		The Mill Arts Centre Trust	470, 471	Viva	96
		The Garden Studio	195	Wantage Camera Club	199
		The People's Gallery	440	Watt & Norris Conservation	100
		The Spice of Life	29	Whispering Knights Project	447
		The Turrill Sculpture Garden	36		
		Village Art	178		
Group exhibitions		Non-selling exhibitions		Non-exhibiting members	
17 @ Temple Mill	459	Abingdon Prep School	184	a+b Furniture	
Abbey Group	228	Appleford Arts	234	Casley, Emmett	
Ardington School of Crafts	207	Appleford Life Drawing	233	Cave, Sue	
ART & CRAFT	133 117	Art At Holy Trinity	84	Cherry, Rosie	
Art at Chalgrove Church	297	Art In The Library	335, 358, 436	Engelhardt, Julia	
Art at Holy Cross	388	ArtWorks	112	Gannon, Melanie	
Art at Home	160	Bicester Art Network	378	Harben, Caroline	
Art at St Andrew's	81	Everyone's An Artist	119	Huddleston, John	
Art More Lovely	385	Fulbrook And Burford Artists	327	Hurst, Lizzie	
Art@Great Rollright	451	Harris Manchester College	70	Ifill, Julie	
Artists at St Mary's	372	HMP Bullingdon,	377	Laube, Laura	
Banbury Artists Cooperative	472	Ian Kensey	173	Lewis, Marrian	
Bicester Sculpture Group	379	Louie Memorial Pavilion	174	Marrison, Lorna	
Chapel Arts	291	Magdalen Road Studios	115	Mimie Poterie	
Cherwell College Oxford	150	Modern Art Oxford	148	REVAD	
Chipping Norton Arts at the Theatre	442	Oxford Ikebana Study Group	51	Robinson, Jim	
Clay Paper Scissors	28	OVADA	157	Stanford University	
Clay Works	210	Oxford Grenoble Association	74	Tucker, John	
Great Coxwell Artists	188			Underhill, Tracey	
Grey Cat Studio	396			Wilson, Teresa	
Howe Hill Collective	288				
Kings Sutton Collective	476				



NEW to Oxfordshire Art Weeks! – Venue 210

Clay Works

11 – 19 May 2019, 10-6pm

A ceramics exhibition of work by invited local potters, ceramicists & sculptors – including the '10 POTTERS'

- Hands-on clay taster sessions
- Discover more about clay with **Oxford Archaeology**
- Clay & pottery supply stall by **Bluematchbox**
- Outdoor firing demos
- Refreshments

The Cobb, Muster Point, Featherbed Lane, East Hendred, OX12 8JF.
www.oxfordshirearts.co.uk for further information.

Ox Arts



Cherwell College

WWW.CHERWELL-COLLEGE.CO.UK

MODERN CHINESE ART WEEKS

4TH - 12TH MAY - MONDAY TO FRIDAY 11 - 5 PM
GROUND, 1ST, 2ND, 3RD AND 4TH FLOORS
51 CORNMARKE STREET, OXFORD OX1 3HA

DESIGNERS GUILD



AVAILABLE
THROUGHOUT
OXFORDSHIRE
INCLUDING

The Curtain Shop
01865 553405

**Annie Haines
Interiors**
01491 411424

**Stella Mannering
& Company**
01993 870599

Griffin Interiors
01235 847135

HEH
07515 121974

Fairfax Interiors
01608 685301



CARRARA GRANDE CHARCOAL WALLPAPER, 40. MOODY GREY PAINT

SPRING SUMMER 2019

DESIGNERS GUILD IS PROUD TO SUPPORT OXFORDSHIRE ARTWEEKS
FABRIC | WALLPAPER | PAINT | FURNITURE | ACCESSORIES

DESIGNERSGUILD.COM

DESIGNERS GUILD is a registered trademark of Designers Guild Ltd. © DESIGNERS GUILD, 2019