

CARTERTON

TOWN MAGAZINE
Edition Twelve 2024



What's On • Animal News • Citizens Advice • Local Art • Sports and Fitness

— SHOP • EAT • PLAY —

The Return of The Ever-Growing Gallery

In May, artists in the area are opening their doors for Oxfordshire Artweeks, the UK's oldest and biggest open studios and pop-up exhibition event – which often seems to herald the arrival of summer sunshine: as the festival begins, colour suddenly runs riot across the county, and we were keen to find out what we've got to look forward to locally.

Artweeks runs this year from 4-27 May, and each of the three weeks is different. In week one (4-12), visit venues north of the Thames (plus Buscot Park), in Bampton, Burford, Witney and Eynsham; in week two the focus is venues in Oxford and in the third week, and for the late May bank holiday weekend, head south to Faringdon and its surrounding villages. And remember, while some artists team up to host group shows and others open their studios, all welcome you both to enjoy the art on show and to chat about their materials, methods, and inspiration. You just drop in, no appointment necessary.

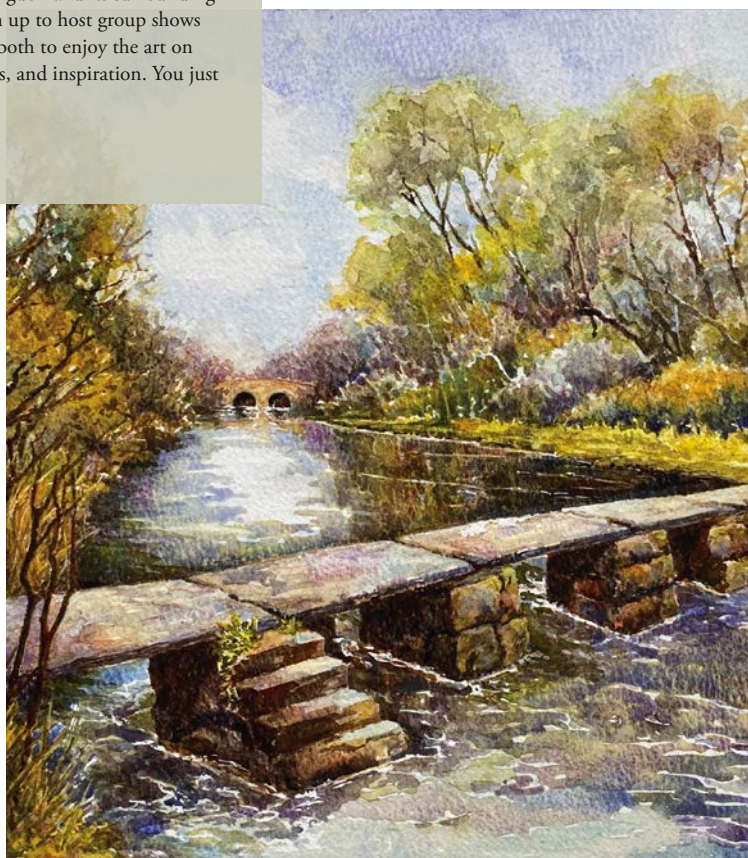
Here are our top suggestions to get you started.



Week 1 (4-12 May) Let's get cracking

Head South to Buscot Park where ten talented artists from Lechlade Art Society will be exhibiting original paintings in both oil and watercolour, reduction prints, wood engravings in an art space in the gorgeous grounds of Buscot House, home to Lord Faringdon who is the patron of the Society. Demonstrations will be held daily, and the paintings on show ranges from lovely local scenes that will be instantly familiar to Venice and India.

Jill Smith, for example, loves to paint Oxfordshire through the seasons, enjoying the challenge of catching the light, from the sparkling frost in winter as shadows fall or snow dusting the grass to the greens and purple shadows of the trees and hedgerows. 'The almost acid greens of spring lift your spirit after the dark days of winter,' she says. 'The colour comes back into the countryside and the hedgerows and fields are busy with new life. I love the brightness of the summer and then



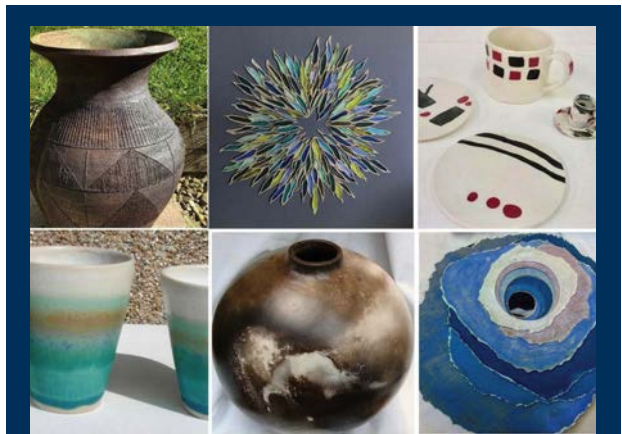
later in the year you can see an amazing array of autumnal leaves reflected in the puddles. It's a place to take a moment and contemplate.'

"When painting I aim to capture those fleeting light effects on the landscape or colour combinations that transform a scene and make it special. My subject matter is often the local landscape, but I am always drawn to anywhere with water and rocks. I tend to produce 'recognisable' images in a traditional style, but I have also painted some landscape montages that twist multiple views and meld them into an overall image – as Eric Morecambe said "all the right notes, but not necessarily in the right order". I also enjoy adding text and calligraphic forms into some of my pictures."

Looking further afield to the sea and the coast, Roger Jones likes to tell stories in his imagery, often including people at their work, perhaps fishing in different ways – for example, mudhorse fisherman of coastal Somerset, workers cutting thatching reeds in Norfolk and people paddling at the seaside or chasing gulls. "I love the moody Jurassic coast of Dorset's Golden Cap, the glistening ebb tide reflections of Welsh harbours with fishermen digging for bait," he says. "I was inspired to paint a ruined fishing smack found in Abersoch harbour, its fishing days finally over, as well as long boats passing through Buscot Lock. Many other aspects of salt seas, seascapes, and fresh waters like the Thames, that flows through my local Cotswold landscape appeal to me and are captured in my work."

You'll also find animals from near and far, both with pop-art-coloured backgrounds and extraordinary realism by John Sirelle. John says, "I have always been fascinated by animals, especially cats. I find tigers in particular an inspirational animal to paint because they not only have their own personality and character, they have their unique stripe patterning too. Whilst trying to capture their undoubted beauty, I try never to forget they are powerful and dangerous creatures."

Look out too for striking art by printmaker Brian Britton, many of which are one-off prints. "I am fortunate in having both a Columbian and an Albion printing press in my own purpose-built studio, says Brian, "and spend much of my time experimenting with abstract images in the pursuit of resolving harmonious balances of colour, form, and line. I also relish the technical challenge of producing realistic images, often being influenced by my local rural surroundings in the Cotswolds."



Stop awhile in Clanfield and Bampton

Start perhaps at the Drew School of Ceramics (Artweeks venue 101) where you'll be wowed by the range of pieces that can be made from clay. Alongside the tutors' work, you can see pots and sculpture made by their students (and you may fancy signing up yourself). Next door, perky Silvi Schaumloeffel's studio is a burst of colour and paint, her bold and playful paintings are richly textured. Expressing the vibrancy of nature as if you are standing in the midst of bushes, hedgerows, and flowering trees, each offers a 'bees eye view' of nature's glory. And over in Bampton village, you'll find five wonderful venues within 200m of the Market Square which is home to West Ox Arts Gallery. Here 12 artists show a variety of art including Trish Ampleforth's rich blue skies and seas, collagraph seagulls evoking childhood trips to the beach by Sonja Coles and upcycled silver spoon windchimes. Opposite, discover stone carving and exquisite portraiture in pencil.

Head North to Asthall, Burford and the Wychwoods - On the A40, near The Windmill restaurant, you'll find four artists in an old barn-cum-forge venue just off the A40 near Asthall – joining metal sculptor Chris Townsend, animal artist Nic Vickery and jeweller Guen Palmer is wood-turner Glynn Allsop - Expect perfect pearls in exquisitely patterned precious metals, pet portraits and characterful wildlife on vintage maps, woodturning demonstrations and weld sparks flying.

Over in Shipton-under-Wychwood there are haunting trees in the paintings of Julia Sorrell who focuses on careful observation and reduces the scenes she sees using warm and cool colours with line. She delights in giving dignity to the over-looked subjects. Her husband, furniture-maker Ian Sanders, hand-carves unique tree-tables inspired by the trees from which they originate. Crafted from native British trees, his finished tables are both a smooth and flowing tree sculpture and a piece of decorative furniture. Ian was originally a botanist studying plant growth and form: his pieces gloriously timeless reflect his respect for the natural world. Each could almost have been carried from the woods – or a fairytale – in their final form, a small tree or ancient roots, a unique piece of both time and nature for the home.



Over at Crawley Mill

Just out of town, where a tinkling brook runs through a wooded glade beneath the tall red brick chimney of Crawley Mill, a series of charming artisan spaces are also inviting you in for Artweeks.

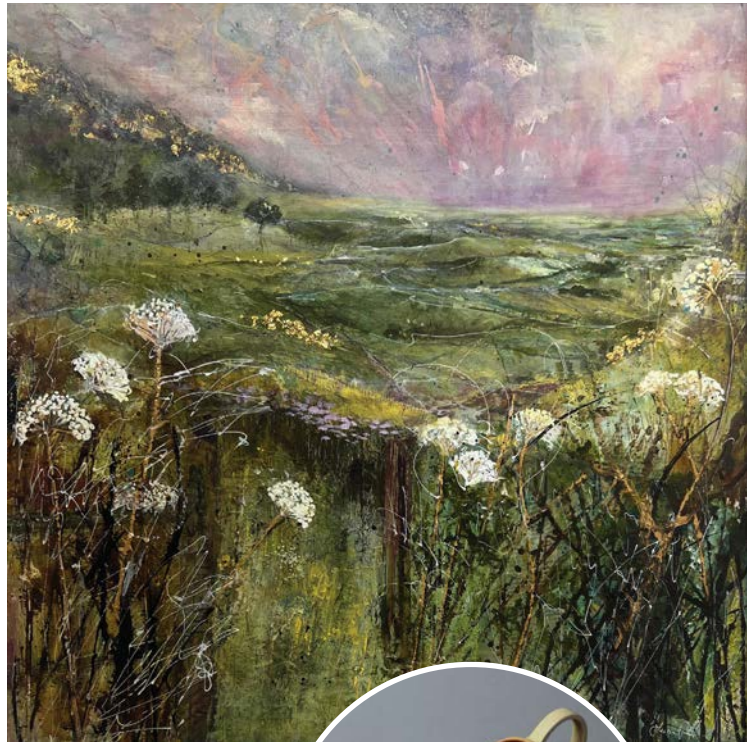
Here, you can meet Meg Harris, who uses freehand machine embroidery to create 'happy textiles' original stitches as well as printed homewares and stationery with contemporary motifs, her ideas drawn from the home, the garden and sometimes the seaside.

In neighbouring Kingfisher Studios, you'll find the perennially popular paintings of Jessica Parker who focuses on the essence of the Cotswolds, their stunning natural beauty a rich source of inspiration for her. "I have responded to elements of the landscape such as rolling hills, stone walls, vegetation and flowers, or winding country lanes in my pieces to evoke the charm and tranquillity of the Cotswolds," she says. "I experiment with different colour palettes to capture the four seasons and the play of light and shadow across the landscape. Acrylic paint offers versatility in its application from translucent washes to opaque layers," she explains, "while collage adds texture and dimension through the incorporation of various materials. I also use ink to define details and enhance elements of the composition."

Jessica is joined by a number of other artists, including Penelope Fulljames a wildlife artist with a focus on wilderness and endangered landscapes and MJ Marshall, a budding and unconventional contemporary abstract artist. Her exhibition is a snapshot of the artist's emerging and evolving voice in which each artwork represents a state of mind, and feelings associated with seasons, time, nature, and personal experiences.

"I was driven to paint by the sensory overload from the constant synaesthetic explosion of colours in my head - namely, seeing words and hearing music in colour," she explains. "I'm inspired by many weird and wonderful things - from art, nature, science, space, geometry, architecture, and the richness of different cultures. My ethereal and stark artscapes are an expression of emotional states associated with world experiences and the need to escape."

Alongside, in Kingfisher Studio, Artweeks newcomer Natalia Podpora is showing visually poetic art created with paper - intricate and unique papercut works, as well as ink illustrations - and other pieces. Born in Toruń in Poland, from childhood she was inspired



by her surroundings and encouraged by her family to create and use her imagination. Recently she has been experimenting with laser cutting her designs into different mediums such as wood and acrylic, taking her work into a different, more tangible dimensions, exploring the intricate physicality of her designs.

Deeply influenced by films and travel, Natalia enjoys visualising the unspoken and focusing on the wellbeing of the mind in her work. Always looking for the next opportunity to translate life and the beauty within into art, she finds inspiration in unspoken emotions, shadows, Japanese woodblocks, and the small pleasures in life.

Also celebrating small pleasures in life, potter Leigh Hicks creates beautiful and tactile pottery with strong, simple shapes that often have a graphic element, and glazes that enhance this. Every piece is hand thrown in small batches on a wheel using stoneware clay and fired to 1240°C, making them both elegant yet robust for everyday use.



In Witney Town

Witney Artweeks runs this year from 4-12 May, and you'll find, for example, stunning showcases of top-quality art in the SOTA Gallery in Langdale Court, whilst Derwent House on Bridge Street is the place to head for hand-crafted furniture and sumptuous textile pieces.

Candida and Dominic Kerpache, two contemporary artists who are new to Artweeks for 2024, are hosting a pop-up exhibition in the Bosworth Suite at Witney Market Square's Blue Boar. Working together, they draw inspiration from the colours and forms of the natural environment, ranging from a peacock feather to swirling cosmic patterns in space, and everything in between. Using fluid paints to create their entrancing bold abstracts, they harness the power of movement and capture a range of moods and emotions through their explorations of colour, shape, and pattern.

"As a Reiki Master I also paint canvases designed to promote meditation and well-being based on the beautiful Chakra colours," adds Dominic

Also in town, on Manor Road, Andrew and Kerry Forkner invite you to their house studio-cum-gallery where Andrew's latest collection shows British wildlife in their natural environments and Kerry's intriguing fabric creations draw you into the history of the landscape.

Week 2 (11-19 May) Take a trip to Oxford

If you hop on the S1 into Oxford for the day, there are dozens of venues to choose from within Oxford city centre, including three Oxford colleges and Rhodes House; a great selection of photography by Oxford Photographers in the Mathematical Institute in the Radcliffe Observatory Quarter, and a working letterpress studio at the heart of the historic Bodleian Library (Artweeks venue 245). You'll also find surprises, like Japanese flower arranging with Oxford Ikebana Study Group (Artweeks venue 223), exquisite papercuts in Jericho's Southmoor Road (Artweeks venue 227).

Elsewhere across the county, from the traditional to the contemporary and multidisciplinary, there's something to delight, intrigue and inspire everyone. Art to surprise you includes five-minute portraits, locally-created pigments and sport art ahead of Paris 2024 with an Olympian Artist. Expect the unexpected as traditional boats, Victorian rocking-horses and contemporary concrete creations make an appearance or discover installations that challenge the perception of Oxford as a bastion of privilege and generative art created through computer coding and a cool robot called Stephen. Where will you go first?

For more information on the festival and other venues to choose from, visit artweeks.org

Artweeks

LOCAL VENUES

WEEK 1: CLANFIELD AND BAMPTON

Lechlade Art Society (Artweeks venue 498)

Painting, Printmaking, Glass

Ten experienced artists showing and demonstrating their art in iconic surroundings.

*Buscot Park, Buscot Park Road
Faringdon SN7 8BU
2pm-6pm, 4-12 May*



Tee Trueman (Artweeks venue 105)

Painting & drawings in various media: fine ink line to expressive paint, pastel & charcoal. Portraits & other subject matter.

*Sol Studio, Setting Barn
High House Close
Clanfield OX18 2TD
12pm-5pm, 4-12 May*



Drew School of Ceramics (Artweeks venue 101 & 102)

Tutors' & student pottery work from the past year at Drew School of Ceramics; garden and domestic stoneware pottery by Sue and Ben Drew.

*Calf Pens, Friars Court
Clanfield OX18 2SU
10.30am-5.30pm, 4-5 May*



Charlotte Sweeney (Artweeks venue 106)

Colourful functional stoneware ceramics for the home, inspired by nature and the seasons.

*Elder Barn, Bushey Drive
Clanfield OX18 2TS
11am-5pm, 4-12 May*



Silvi Schaumloeffel (Artweeks venue 103)

Contemporary expressive oil painting studio. Original artworks in a beautiful Cotswold farm setting.

*The Old Calf Pens
Friars Court, Clanfield OX18 2SU
11am-5pm
4-6 10-12 May*



West Ox Arts Gallery (Artweeks listing 107)

Enjoy a stunning showcase of work across the visual arts by fifteen talents artists – includes textiles, glass art and vintage ephemera delightfully upcycled. Runs from 27 April to 1 June (closed Mondays except Bank holidays).

*Town Hall, Market Square, Bampton OX18 2JH
11.30am-4.30pm (Sun 2-4pm); 4-12 May*



Petra Richards (Artweeks venue 104)

A self-taught professional artist. Drawing and painting with vivid colours, textures and dramatic compositions.

*Northcourt Farm, Marsh Lane
Clanfield OX18 2RQ
10am-3pm, 4-12 May*



Tuula Nicholson (Artweeks listing 108)

Sculpture, Wood

A multitude of contemporary sculptures plus home & garden products made from natural materials, handmade in the Cotswolds.

*Wisteria, Church View, Bampton
OX18 2NE
11am-5pm; 4-12 May*



David Williams, Sue Side, Tamzin Keown (Artweeks listings 109-111)

Organic tactile stone sculpture for home & garden; atmospheric drawings, etchings & graphite portraits;

And jewellery inspired both by the four natural elements and by outside the earth's atmosphere.

*The Old Forge, Bampton OX18 2NA
10am-5pm; 4-6 10-12 May*



@ The Old Forge

Pip Shuckburgh (Artweeks listing 112)

Pip is enjoying commissions & exhibitions throughout 2024. Catch her at her studio during Artweeks!

Fairwood, Cheapside, Bampton OX18 2JL

11am-6pm; 4-5 9-12 May



Mark Fitzgerald (Artweeks listing 113)

Rustic earthenware pottery: slipware and tin glazed. Open studio with shop window display.

*2a Bushey Row, Bampton OX18 2JU
11am-6pm; 4-12 May*



Neville Crowson (Artweeks listing 114)

Paintings of plein air landscapes, garden scenes, seascapes, still life and church interiors on view in house and garden.

*Blomfield House, Cote, Bampton OX18 2EG
11am-6pm; 4-12 May*



Christopher Townsend, Glynn Allcock, Nic Vickery & Guen Palmer (Artweeks listing 89-91)

See latest collection of new work from two of Oxfordshire's most dynamic makers in metal and wood as metal is forged in the fire; quirky animal artwork using vintage maps, watercolour, ink, pastel and acrylics; and delicate contemporary jewellery designed and handmade using precious materials with unusual gemstones and pearls.

*The Old Forge, Asthall Barrow Farm, Asthall OX18 4HJ
11am-5pm; 4-12 May*



The Gallery at Burford Garden Company (Artweeks listing 88)

Established gallery focusing on contemporary and vintage paintings and sculptures from local artists and beyond.

*Shilton Road, Burford OX18 4PA
01993 823117
9am-6pm (Sun 11am-5pm); 4-12 May*



Forge Gallery at Wychwood (Artweeks listing 82)

Original pop chic art, Japanese ceramics, glass and wood, watercolour cards & more...

*The Green, Ascott-under-Wychwood OX7 6AB
11am-6pm (Sat/Sun 1pm-7pm); 4-11 May*



Asha Pearse (Artweeks listing 83)

A mixed media artist whose emotive work is informed by meditation, spirituality & universal connection.

*1 Dawls Close, Ascott-Under-Wychwood OX7 6AT
1pm-6pm; 4-5 10-12 May*



Oxfordshire Craft Guild (Artweeks listing 84)

Vibrant glass, colourful ceramics, eye-catching jewellery, and unique textiles made by members of the OCG.

*The Old Prebendal House, Station Road, Shipton-under-Wychwood OX7 6BQ
11am-5pm; 4-12 May*



Julia Sorrell | Ian Sanders (Artweeks listing 85)

Drawings, paintings, textiles by Julia Sorrell and Ian Sanders's unique tree-tables.

*Littlestock, Meadow Lane, Shipton-under-Wychwood OX7 6BW
11am-6pm; 4-12 May*



Alison Townley (Artweeks listing 86)

Functional ceramic homewares made on the pottery wheel, decorated using a variety of colours and techniques.

*Coldstone Farm, High Street, Shipton-under-Wychwood OX7 6DQ
10am-4pm (Thu/Fri 11am-4pm); 4-6 9-10 May*



Meg Harris-Smith
(Artweeks listing 92)

Meg uses freehand machine embroidery to create original textile art as well as printed homewares and stationery.

May 1 Design, Unit 18C, Crawley Mill Ind. Est., Dry Lane, Crawley OX29 9TJ
10am-4pm; 4-12 May



Jessica Parker, Penelope Fulljames, MJ Marshall, Natalia Podpora and Leigh Hicks
(Artweeks listings 95-99)

Mixed media paintings based on the Cotswold Landscape; oil studies, charcoal drawings & pastels of wild places, wildernesses, trees & water; synaesthetic unconventional abstracts; papercuts & ink illustrations showcasing the beauty of life and growth; and functional and decorative stoneware ceramics, handthrown and individual.

Kingfisher Studios, Unit 30, Crawley Mill Ind. Est., Dry Lane, Crawley OX29 9TJ
10am-4pm; 4-12 May



SOTA Gallery
(Artweeks listing 100)

Be wowed by the work of over 100 artists and crafters all year round: ceramics, jewellery, painting, printmaking & sculpture.

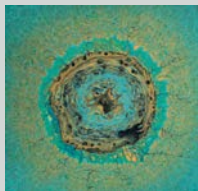
Langdale Court, Witney OX28 6FG
9am-5pm; 4-6-11 May



Candida & Dominic Kerpache
(Artweeks listing 99)

Paintings: unique vibrant fluid art creations inspired by our natural world and the universe beyond.

The Blue Boar (Bosworth Suite)
28 Market Square, Witney OX28 6BH
11am-6pm; 6-10 May



Derwent House
(Artweeks listing 516)

Showcasing a range of British designer-makers and local artists who handcraft furniture, ceramics, textiles, and homewares.

3 Bridge Street, Witney OX28 1BY
9.30am-5.30pm; 4-27 May (closed Suns/Mons)



Andrew & Kerry Forkner
(Artweeks listing 98)

Wildlife paintings and drawings, hand-dyed, quilted and embroidered textiles and jewellery.

149 Manor Road, Witney OX28 3UF
11am-6pm; 4-12 May



Alison Berrett
(Artweeks listing 115)

Colourful, dramatic paintings and drawings based on the natural landscape and rhythms of nature in a beautiful rural location.

2 Newfield Cottages, Eynsham OX29 4BG
11am-5pm; 4-5-9-12 May



Paul Drew (Artweeks listing 116)

Ceramics & sculpture. Making connections - vessels, relics, human forms and references to the natural world.

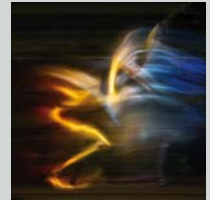
98 Acre End Street, Eynsham OX29 4PD
11am-6pm; 4-6-11-12 May



Hugh Pryor (Artweeks listing 117)

Experimental photography using dynamic lighting with performance and movement.

88 Acre End Street, Eynsham OX29 4PD
11am-6pm (Sun 2pm-6pm); 4-5-9-11-12 May



Eric White (Artweeks listing 118)

Atmospheric landscapes in pastel, ink and paint - a veritable cornucopia of visual delights.

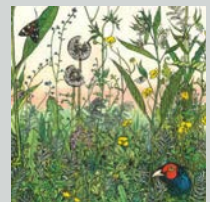
28 Mill Street, Eynsham OX29 4JS
11am-6pm (Sun 12pm-6pm); 4-6-8-10-12 May



Alice Walker & Matt Black
(Artweeks listings 119 & 120)

The peace of wild things: intricate & soulful nature themed artworks combining paint, print & embroidery, and paintings and drawings depicting ambiguous territories beyond consciousness. Both in Eynsham's newest arts venue.

Mill Street Arts, 66 Mill Street, Eynsham OX29 4JU
10am-4pm; 4-6-11-12 May



Alison Holmans
(Artweeks listing 121)

Wheel-thrown and hand-built stoneware ceramics that are functional, aesthetic and tactile. Raku made from local clay.

*The New House, Tanners Lane, Eynsham OX29 4HJ
10am-6pm (Tue/Wed by appt); 4-6 9-12 May*



Philippa Norris
(Artweeks listing 122)

Quirky and practical ceramics in a backwater of ancient Eynsham.

*Cotswold House, 9 Queens Lane, Eynsham OX29 4HL
11am-6pm; 4-6 10-12 May*



Lorna Marrison
(Artweeks listing 123)

Lorna is a painter of home and landscapes.

*16 Hawthorn Road, Eynsham OX29 4NT
11am-5pm; 4-6 11-12 May*



Faringdon Artists
(Artweeks listing 496)

Painting, printmaking, mixed media & other creative works by talented local artists in historic Faringdon Old Town Hall, Marketplace

*Faringdon SN7 7HL
11am-5pm, 18-19 24-27 May*



Faringdon taster exhibition
(Artweeks listing 497)

Art by exhibitors opening their studios in the surrounding villages in a historic building in the heart of town.

*Great British Revivals, 1 Bromsgrove, Faringdon SN7 7JF
10.30am-4pm, 11-27 May*



Great Coxwell Artists
(Artweeks listing 500)

Ceramics, stone, painting, drawing, printing, glass, collage, jewellery, quilts, digital art, wire & wood. Refreshments all day.

*Holloway House, Great Coxwell SN7 7LZ
11am-5.30pm, 18-19 25-27 May*



National Trust Heritage & Rural Skills Centre
(Artweeks listing 499)

A range of craftspeople will be exhibiting at the Heritage and Rural Skills Centre, showcasing traditional methods.

*The Timber Store, NT Heritage & Rural Skills Centre, Coleshill SN6 7PT
10am-4pm, 23-27 May*



Visit artweeks.org to see additional venues in Sipton under Wychwood, Oxford, Charlbury, Witney and other places.



Guen Palmer



Christopher Townsend

Meet the Artist:

Cathryn Jeff

Cathryn Jeff is a popular Oxfordshire landscape artist, known for her vibrant paintings that enhance the colours and views of the county with texture, energy, and sparkling imagination.

She grew up in Long Hanborough and has lived in West Oxfordshire, which she loves, for most of her life. “I did spend some time in the North East, and, yes, it was beautiful, but I still found myself drawn back here”.

She continues: “I love being outside no matter what the conditions. I totally believe that phrase ‘There’s no such thing as bad weather, only unsuitable clothing’. You can wrap up against the rain; if it’s windy, it’s exhilarating and so on. I go out every day with my energetic Labrador, Lenny – I got him to give me an excuse to walk so much.

I’m at my happiest when the sky is doing something unexpected: you can see amazing colours at sunrise and sunset, peaches, pinks and purples that reflects on the fields giving them an extraordinary glow and turn them colours that are surprisingly bright sometimes. Or there’ll be a moment in the day when the light has a different quality – perhaps it will be soft and low on a winter’s morning and there are long shadows stretching across the ground, or it flickers golden through the silhouettes of trees.





I'm particularly drawn to trees. Who could fail to be amazed by Blenheim's incredible old oaks? They're only three miles from where I live and they're over four hundred years old. Their gnarly branches draw intricate patterns against the sky and so they're great to paint. If I'm honest, however, my favourite tree is the silver birch, and those that I find in little copses and undiscovered woods that I find on paths that are off the beaten track with pretty flowers and wild garlic. When I am walking through them, I rarely see another soul. They're so peaceful, almost mystical, that they could be the setting of a fairytale, and that's a feeling I try to capture in my paintings.

In the spring the woods are magical when the bluebells are out en masse – that's the best time of year – and the colour they add to the landscape is stunning. I can't help but paint them. When I am out and about I take photos to remind me of the colours. Then, although I work from memory mostly and play with composition of a scene when I am back in the studio, they're great reminders.

I also have a trail I enjoy in North Leigh that takes me through bracken and ferns: in the spring and summer, they grow higher than my head and I feel as if I am in an Indiana Jones film and need a trusty scythe to get back to civilization. I often put these in the foreground of my work, or even paint on a fern I have brought home and use it to print with. I also love splattering fluid paint to suggest foliage, small flowers and foreground interest. And for the first layer of my backgrounds, I often use a fluid paint effect, I'm introducing an element of the unknown right at the beginning, so the paintings are a bit of an adventure, too."

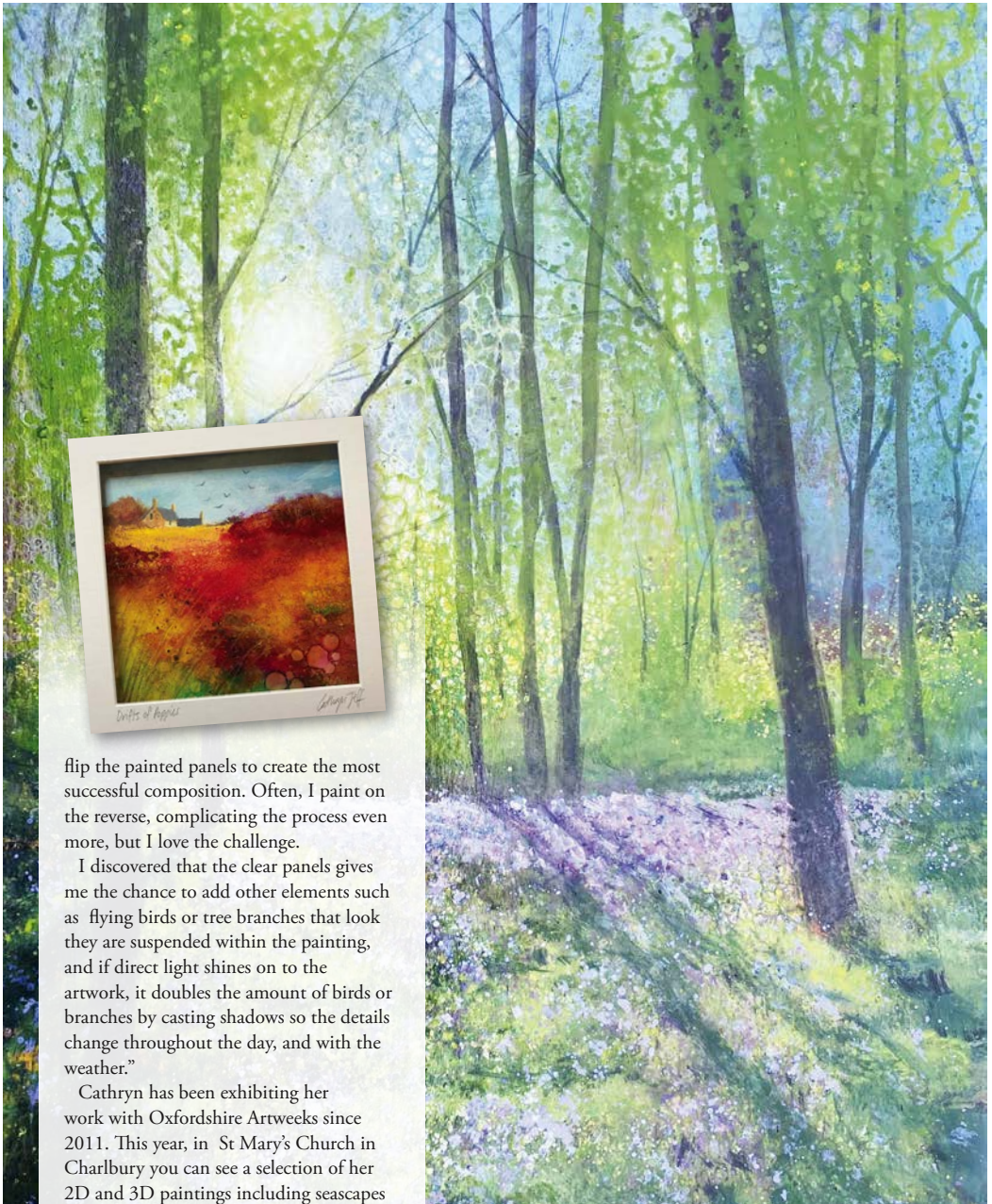
New for this year, Cathryn has been developing her art into 3D wall art in a crisp white box frames. Rather than being painted on

a flat board as a single scene, these landscapes are built from several layers of clear plastic each of which is painted separately with acrylic, ink and oil paint so that the viewer can see right into the picture, which moves as they do.

"I just love the process of experimenting and creating art in different ways, and I often try out new materials and surfaces to paint on. When I stumbled across some clear rigid plastic panels in my studio left over from a batch of frames, I started painting landscapes on them and had the exciting idea of layering up these painted panels spaced with gaps to create 3D scenes. As the panels are clear, you can see right through to the painting at the back. For example, the panel at the front might have foreground interest such as grasses, trees or flowers raised up against the rear panel, a background scene of distant hedgerows, a field or woodland. It's a totally different way of working as I need to consider the layers, not as individual paintings, but as a whole piece, so I often swap rotate or even ▶

"Who could fail to be amazed by Blenheim's incredible old oaks?"





flip the painted panels to create the most successful composition. Often, I paint on the reverse, complicating the process even more, but I love the challenge.

I discovered that the clear panels gives me the chance to add other elements such as flying birds or tree branches that look they are suspended within the painting, and if direct light shines on to the artwork, it doubles the amount of birds or branches by casting shadows so the details change throughout the day, and with the weather.”

Cathryn has been exhibiting her work with Oxfordshire Artweeks since 2011. This year, in St Mary’s Church in Charlbury you can see a selection of her 2D and 3D paintings including seascapes inspired by visits to the coast in Cornwall, Devon and Wales. (Artweeks venue 70)

She will also have a small collection of mini-paintings including woodlands and Oxford scenes available to view at Payne & Son (Oxford Jeweller & Silversmith) on Oxford High Street during the Artweeks festival (Artweeks venue 249).



For more details on these venues and to see hundreds more as part of the Oxfordshire Artweeks festival, visit artweeks.org